

(2-4)

VISP  
SARSAWA

IAF  
18 NOV 25

SARSAWA, INDIA  
VOR Y RWY 09

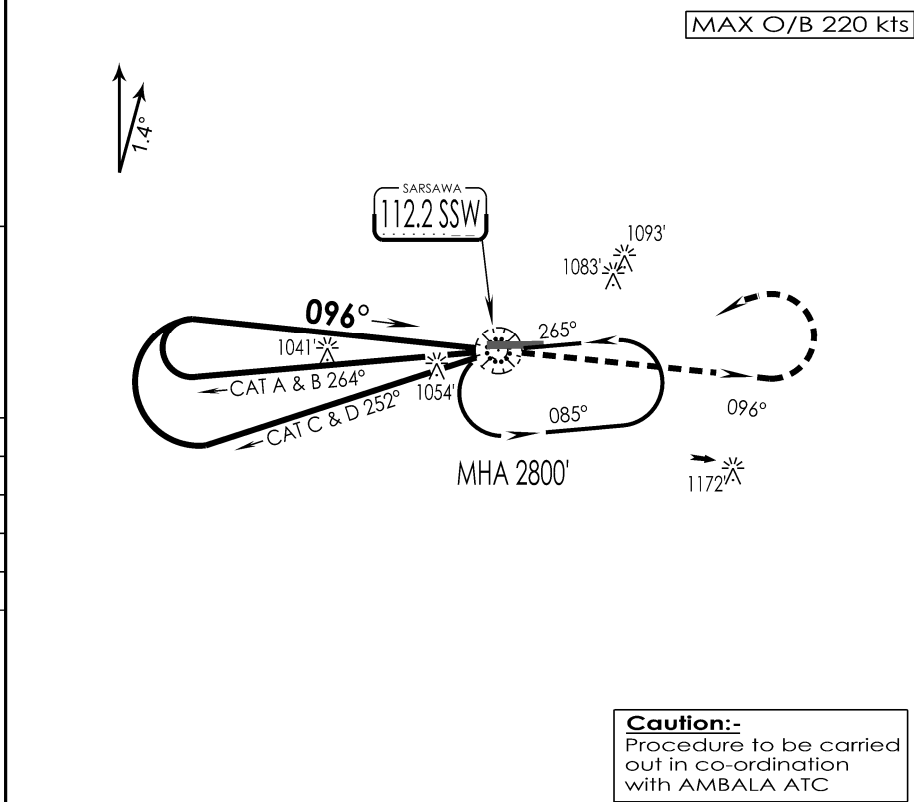
|  |                           |                              |                  |                           |  |
|--|---------------------------|------------------------------|------------------|---------------------------|--|
| SARSAWA Approach<br>VC,UC  |                           | SARSAWA Tower<br>120.2 VC,UC |                  | ATIS<br>112.2             |  |
| VOR<br>SSW<br>112.2  | FINAL<br>Apch Crs<br>096° | MDA (H)<br>1340'(452')       |                  | Apt Elev 896'<br>RWY 888' |  |
| <p><b>MISSED APCH:</b> Climb STRAIGHT AHEAD to 2000', then climbing turn LEFT to join VOR hold at 2800' or as directed by ATC.</p> |                           |                              |                  |                           |  |
| Alt Set: hPa   | Rwy Elev: 32 hPa          | Trans level: By ATC          | Trans alt: 6000' |                           |  |

1 Inch = 5.0 NM

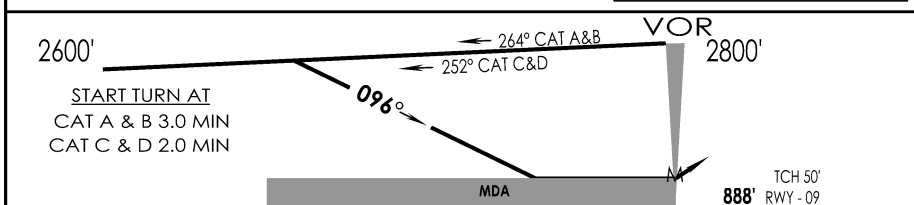
5 NM

0

5 NM



SURVEY PERIOD: 2023-24



|                  |           |     |         |           |     |         |   |                           |         |
|------------------|-----------|-----|---------|-----------|-----|---------|---|---------------------------|---------|
| GND SPEED KTS    | 80        | 100 | 120     | 140       | 160 | 180     |   |                           |         |
| DESCENT ANGLE 3° | 425       | 531 | 637     | 743       | 849 | 955     |   |                           |         |
| MAP AT VOR       |           |     |         |           |     |         | <p>STRAIGHT-IN LANDING RWY 09</p> <p>non - CDFA</p> <p>MDA(H) 1340'(452')</p> | <p>CIRCLE - TO - LAND</p> |         |
| IALS             |           |     | ALS OUT |           |     | Max Kts |   |                           | MDA (H) |
| A                | RVR 1900m |     |         | RVR 2300m |     |         | A   | 1440'(552')               | 2800m   |
| B                | RVR 2100m |     |         | RVR 2500m |     |         | B   | 1490'(594')               | 3200m   |
| C                |           |     |         |           |     |         | C   | 1590'(694')               | 3600m   |
| D                |           |     |         |           |     |         | D   |                           |         |

CHANGES : TWR FREQ

IPDC, DTE OF OPS (T & H)