

(2-2)

VISP
SARSAWA

IAF
18 NOV 25

SARSAWA, INDIA
VOR Y RWY 27

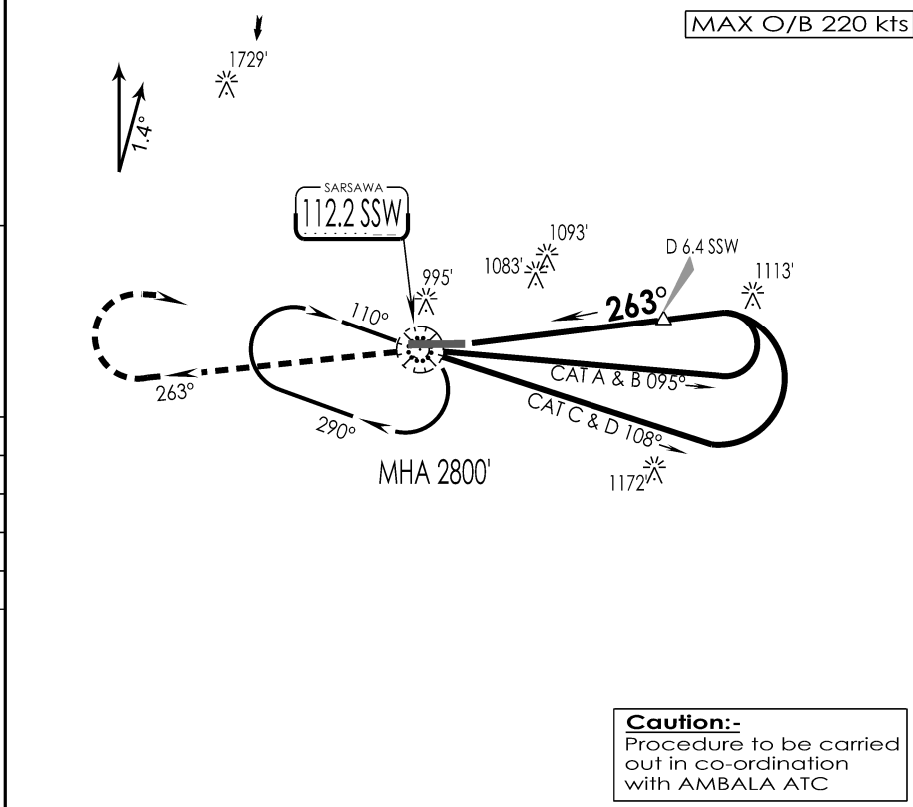
SARSAWA Approach VC,UC		SARSAWA Tower 120.2 VC,UC	ATIS 112.2	
VOR SSW 112.2	FINAL Apch Crs 263°	MDA (H) 1410' (514')	Apt Elev 896' RWY 896'	
<p>MISSED APCH : Climb STRAIGHT AHEAD to 2000', then climbing turn RIGHT to join VOR hold at 2800' or as directed by ATC.</p>				
Alt Set: hPa	Rwy Elev: 32 hPa	Trans level: By ATC	Trans alt: 6000'	

1 Inch = 5.0 NM

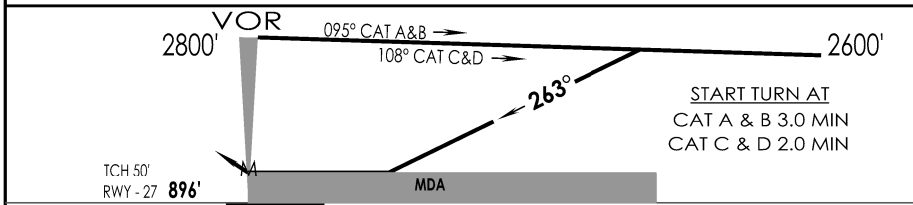
5 NM

0

5 NM



Caution:-
Procedure to be carried out in co-ordination with AMBALA ATC



GND SPEED KTS	80	100	120	140	160	180				
DESCENT ANGLE 3°	425	531	637	743	849	955				
MAP AT VOR										
STRAIGHT-IN LANDING RWY 27							CIRCLE - TO - LAND			
non - CDFA										
MDA(H)										
FULL			ALS OUT				Max Kts	MDA (H)	VIS	
A	RVR 1800m			RVR 2600m				A	1440'(552')	2800m
B	RVR 2000m			RVR 2800m				B	1490'(594')	3200m
C	RVR 2000m			RVR 2800m				C	1590'(694')	3600m
D	RVR 2000m			RVR 2800m				D	1590'(694')	3600m

CHANGES : TWR FREQ

IPDC, DTE OF OPS (T & H)