

(2-1)

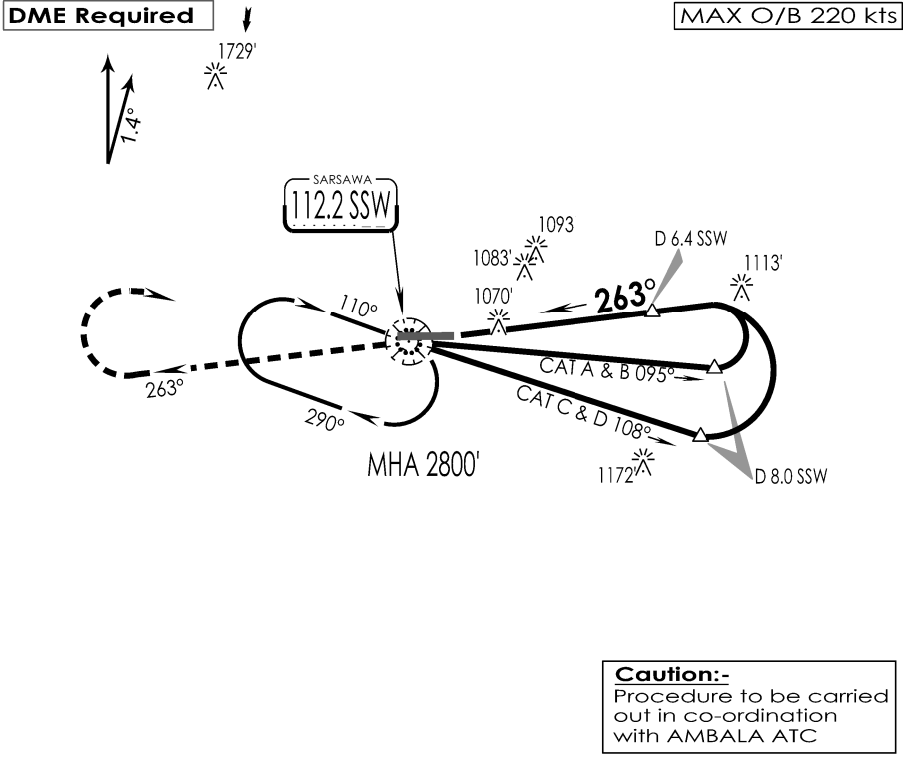
VISP
SARSAWA

IAF
18 NOV 25

SARSAWA, INDIA
VOR Z RWY 27

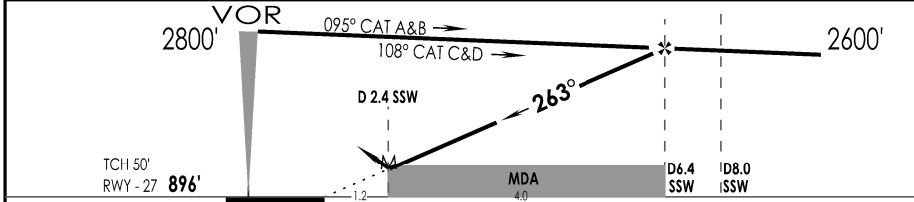
SARSAWA Approach VC,UC		SARSAWA Tower 120.2 VC,UC		ATIS 112.2	
VOR SSW 112.2	FINAL Apch Crs 263°	FAF D 6.4 SSW 2600'	MDA (H) 1330'(434')	Apt Elev 896' RWY 896'	
MISSED APCH: Climb STRAIGHT AHEAD to 2000', then climbing turn RIGHT to join VOR hold at 2800' or as directed by ATC. Alt Set: hPa Rwy Elev: 32 hPa Trans level: By ATC Trans alt: 6000'					

1 Inch = 5.0 NM
5 NM
0
5 NM



SURVEY PERIOD: 2023-24

SSW DME	3.0	4.0	5.0	6.0	6.4
ALTITUDE (ft)	1520	1840	2160	2480	2600



GND SPEED KTS	80	100	120	140	160	180	2000' 2800' RT
DESCENT ANGLE 3°	425	531	637	743	849	955	

STRAIGHT-IN LANDING RWY 27			CIRCLE - TO - LAND			
CDFA MDA(H) 1330' (434')						
FULL		ALS OUT		Max Kts	MDA (H)	VIS
A	RVR 1300m	RVR 1500m		A	1440'(552')	2800m
B				C	1490'(594')	3200m
C				D	1590'(694')	3600m
D						

CHANGES : TWR FREQ

IPDC, DTE OF OPS (T & H)