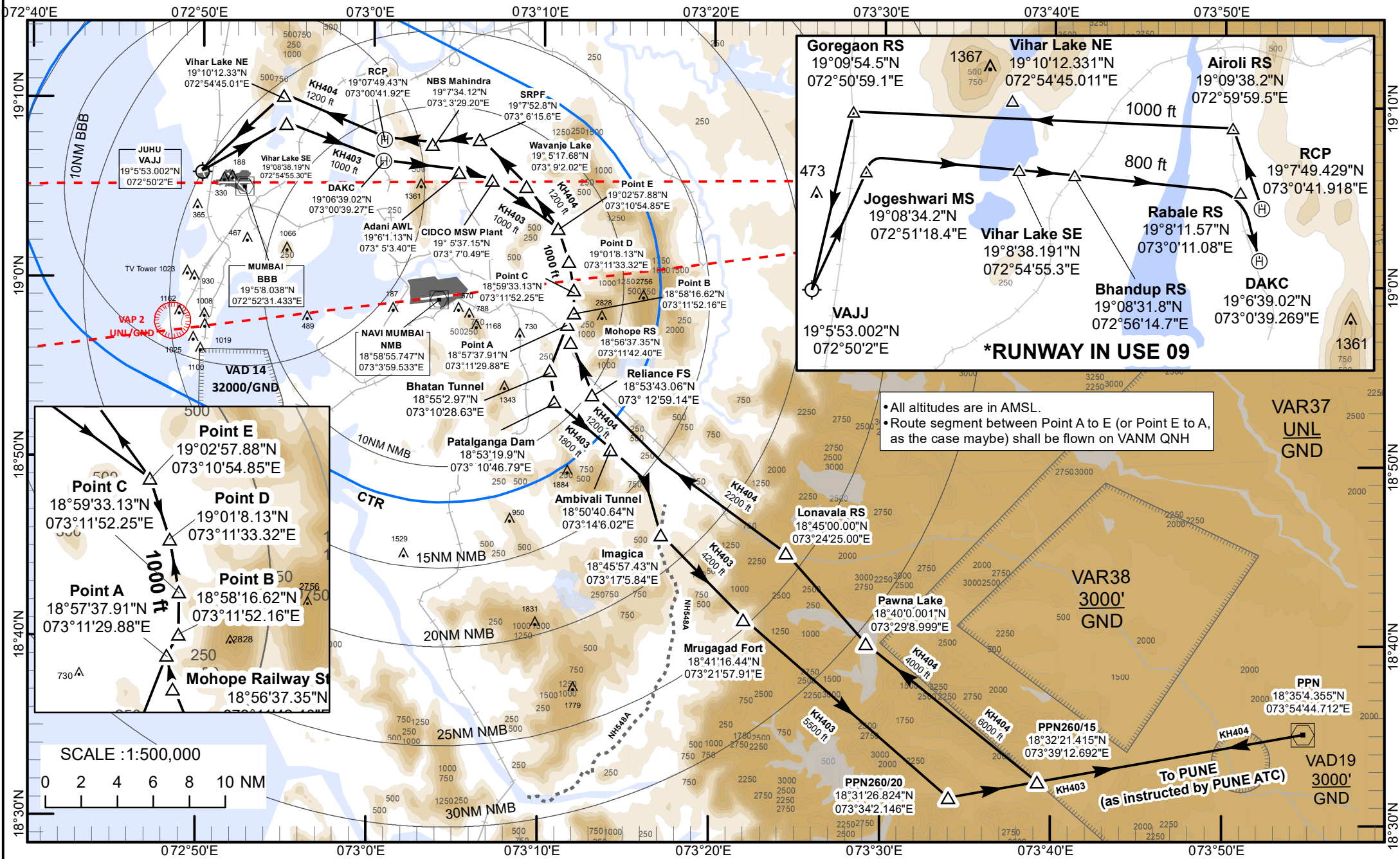


JUHU TWR 124.350, 118.750
MUMBAI TWR 118.100
MUMBAI APP 127.900
INS Kunjali-SPARTAN 126.800

NMIA TWR 119.0, 118.275
NMIA APP 124.650, 125.450,
 126.975
PUNE 118.800, 121.300

HELICOPTER VFR ROUTES		Runway in use	
		VABB	VANM
KH403	JUHU - PUNE	27	26 or 08
		09*(refer Note 1 and 3)	
KH404	PUNE - DAKC/RCP - JUHU	27	26 or 08
		09*(refer Note 6 and 8)	

MUMBAI (VABB)
 INDIA
KH403, KH404



• All altitudes are in AMSL.
 • Route segment between Point A to E (or Point E to A, as the case maybe) shall be flown on VANM QNH

To PUNE
 (as instructed by PUNE ATC)