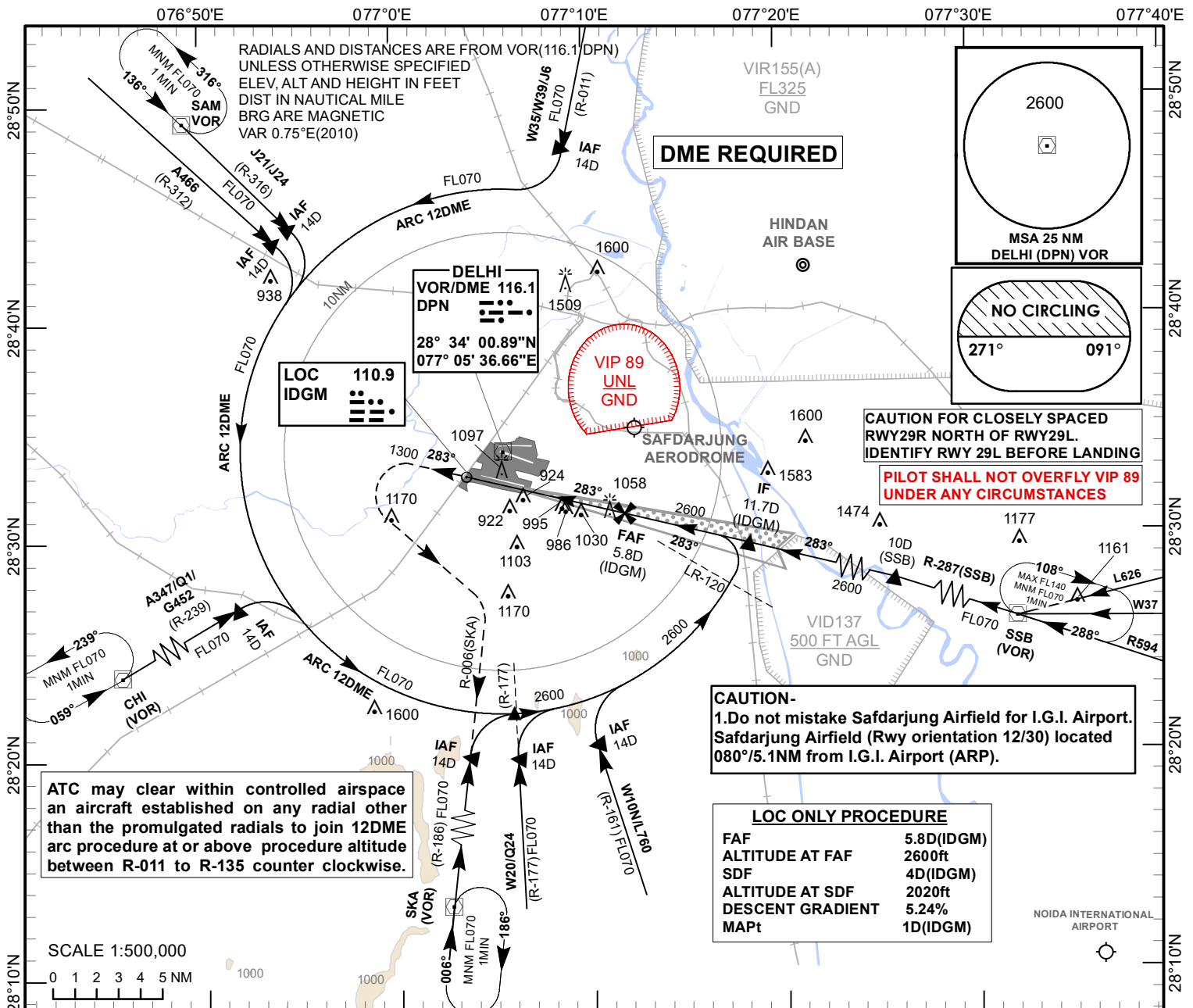


**INSTRUMENT APPROACH CHART**

**AERODROME ELEV 778ft**  
HEIGHTS RELATED TO  
THR RWY 29L - ELEV 752 ft

TWR 125.850/123.825  
APP 118.825/124.200  
125.675/126.350

**DELHI (VIDP)**  
INDIA  
**ILS OR LOC RWY 29L**

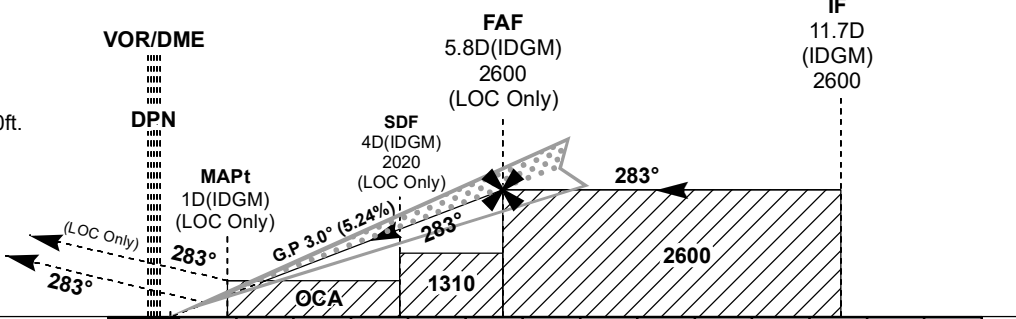


**Transition Altitude 5000**

**MISSED APPROACH**  
Climb straight ahead, passing 1300ft turn left establish R-006 (SKA 117.2) climbing to 2600ft. Crossing 30D (SKA) climb to FL70 to join hold at SKA or as instructed by ATC.  
**CAUTION: NO TURN BEFORE CROSSING THRESHOLD RUNWAY 29L**

ILS RDH 53.7

THR ELEV 752



NAUTICAL MILES FROM THR RWY 29L

O. C. A. (H)			Distance / Altitude information for LOC Only Procedure								
Acft Category	A/B	C/D	Distance (IDGM-DME)	NM	5.8D	5D	4D (SDF)	3D	2D		
STRAIGHT - IN	952(200)	952(200)	Altitude	Ft	2600	2340	2020	1700	1380		
CIRCLING	1470(692)	1570(792)									
LOC Only Procedure			Ground speed & Rate of Descent information for LOC Only Procedure								
STRAIGHT - IN	(WITH SDF)	1280(528)	1280(528)	Ground speed	(Kt)	80	100	120	140	160	180
	(WITHOUT SDF)	1310(558)	1310(558)	Rate of descent (5.24%)	(Ft/Min)	425	530	635	745	850	955
CIRCLING	1470(692)	1570(792)									