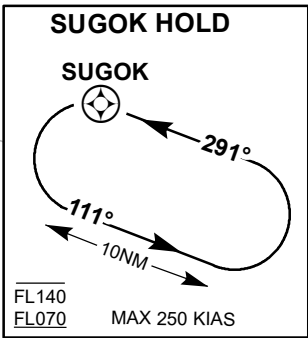
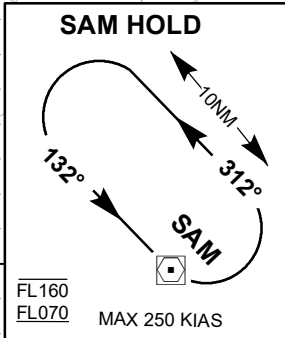
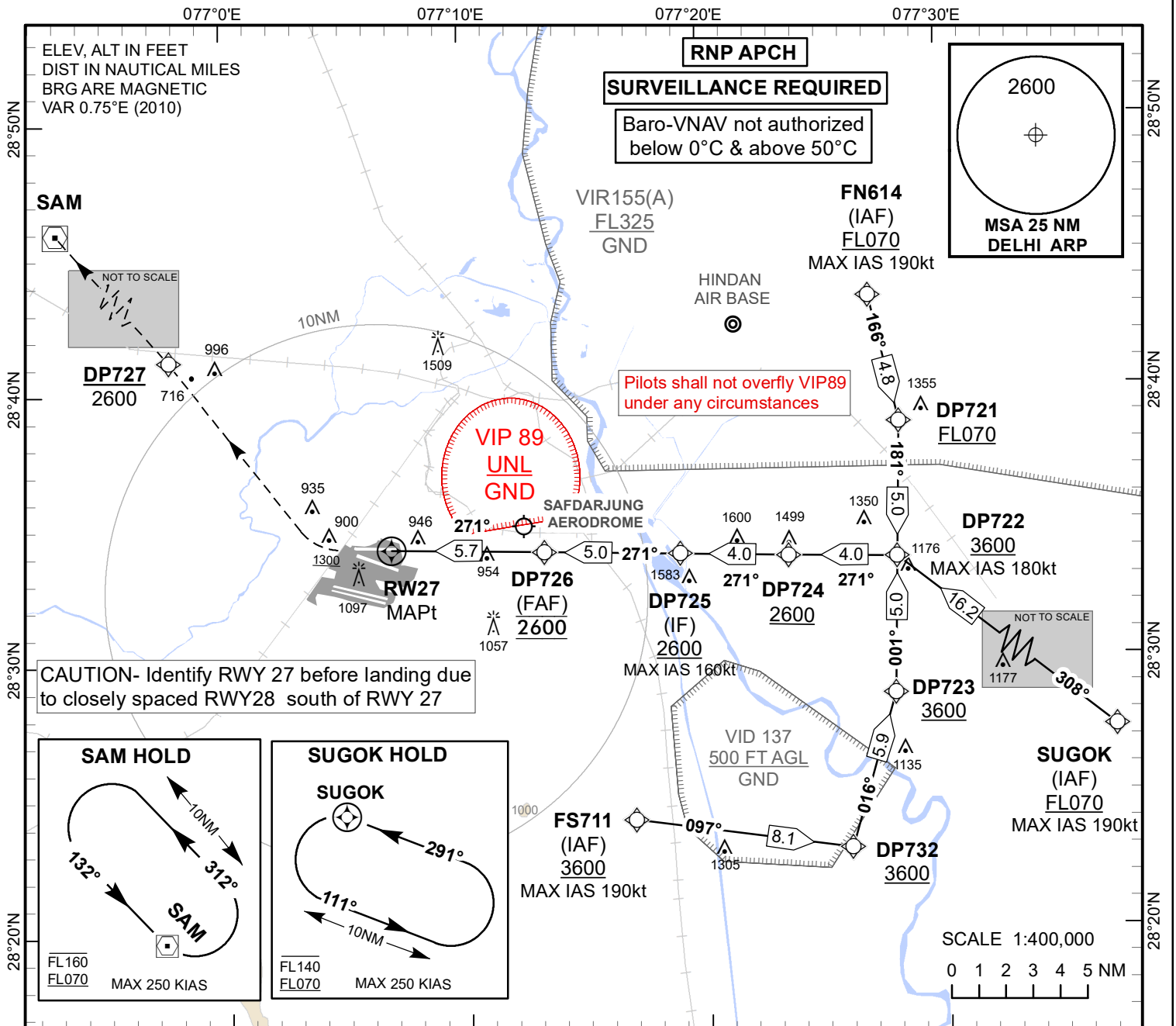


**INSTRUMENT APPROACH CHART**

**AERODROME ELEV 778ft**  
HEIGHTS RELATED TO  
THR RWY 27 - ELEV 752 ft

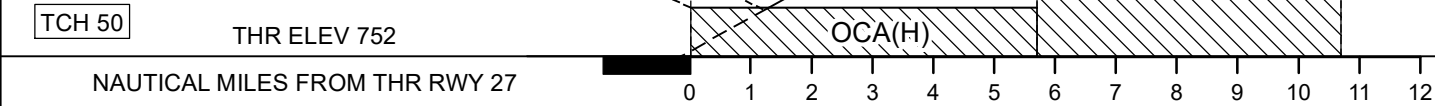
TWR 118.750/118.100  
APP 118.825/124.200  
125.675/126.350

**DELHI (VIDP)**  
INDIA  
**RNP Y RWY 27**



**Transition Altitude 5000**

**MISSED APPROACH**  
**Speed restricted to 210 KIAS Max**  
 Climb Straight ahead at 1300ft  
 turn RIGHT proceed to DP727  
 climbing to 2600. Then proceed to  
 SAM climbing to FL070 to join SAM  
 hold at FL070 or as instructed by ATC.  
**CAUTION: NO TURN BEFORE CROSSING  
 THRESHOLD RWY 27**



Acat Category	A/B/C/D	Distance to RWY27	Distance / Altitude Information									
			NM	Ft	NM	Ft	NM					
LNAV/VNAV	1110(358)	Distance to RWY27	5.7 (FAF)	2600	5	2400	4	2080	3	1760	2	1440
LNAV	1210(458)	Altitude	Ground Speed / Rate of Descent Information									
Ground Speed			Kt	80	100	120	140	160	180			
Rate of Descent (5.24%)			Ft/Min	425	530	635	745	850	955			