

1-3

VIDX
HINDAN

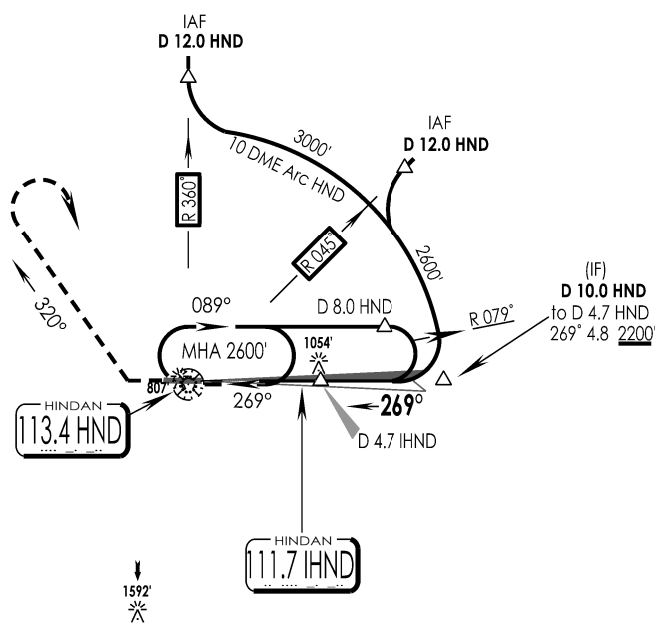
IAF
11 JAN 25

HINDAN, INDIA
CAT II ILS RWY 27

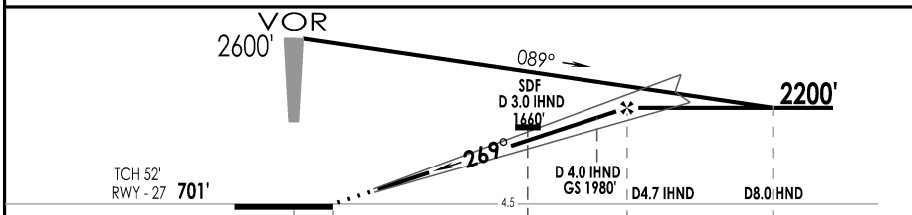
HINDAN Tower 130.1, VC		HINDAN Approach 134.2, UC, VC			ATIS 113.4		2600'
VOR HND 113.4	ILS IHND 111.7	FINAL Apch Crs 269°	FAP D 4.7 IHND 2200'	DA (H) As per table	Apt Elev 703' RWY 701'		
MISSED APCH: Climb Straight ahead to 1500', Turn RIGHT hdg 320° Climb to 2600', turn RIGHT to join VOR hold at 2600' or as directed by ATC.							
Alt Set: hPa		Rwy Elev: 25 hPa		Trans level: By ATC		Trans alt: 5000'	

DME Required

1 Inch = 7.5 NM
7.5 NM
0
7.5 NM



- Holding and initial approach speeds restricted to max 220 KTS IAS.
- Avoid crossing south of R-072 DPN.



GND SPEED KTS	80	100	120	140	160	180	↑ 1500'	↻ 320°	↑ 2600'
ILS GS or LOC DESCENT ANGLE 3°	425	531	637	743	849	955			

STRAIGHT-IN LANDING RWY 27 ILS CAT II									
DA (H)	AB: 814' (113')	CD: 840' (139')	RA	AB: 113'	CD: 139'				
FULL									

A	RVR 300m								
B	RVR 400m								
C	RVR 400m								
D	RVR 400m								

CHANGES : NEW PROCEDURE

IPDC, DTE OF OPS (T & H)

SURVEY PERIOD : 2021-22 & 2023-24