

1-1

VIDX
HINDAN

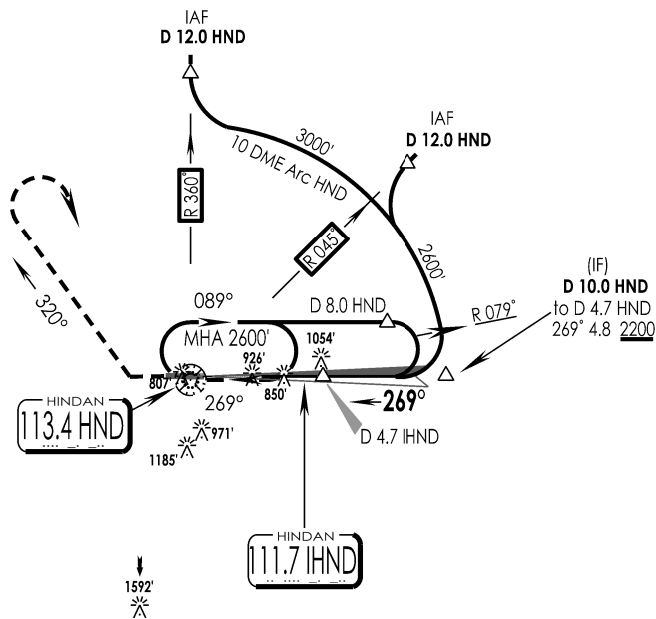
IAF
11 JAN 25

HINDAN, INDIA
CAT I ILS RWY 27

HINDAN Tower 130.1, VC		HINDAN Approach 134.2, UC, VC		ATIS 113.4		2600'
VOR HND 113.4	ILS IHND 111.7	FINAL Apch Crs 269°	FAP D 4.7 IHND 2200'	DA (H) 916' (215')	Apt Elev 703' RWY 701'	
MISSED APCH: Climb Straight ahead to 1500', Turn RIGHT hdg 320° Climb to 2600', turn RIGHT to join VOR hold at 2600' or as directed by ATC.						
Alt Set: hPa		Rwy Elev: 25 hPa		Trans level: By ATC		MSA HND VOR

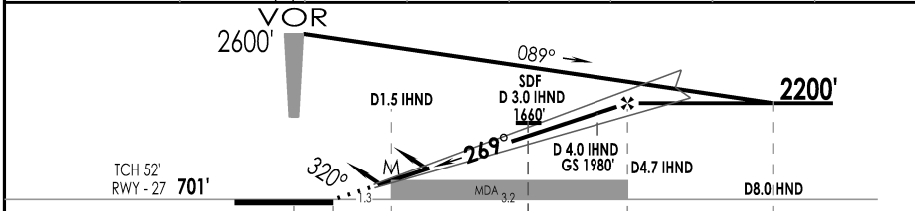
1 Inch = 7.5 NM
7.5 NM
0
7.5 NM

DME Required



- Holding and initial approach speeds restricted to max 220 KTS IAS.
- Avoid crossing south of R-072 DPN.

LOC (GS OUT)	IHND DME	4.7	4.0	3.0	2.0
	ALTITUDE (ft)	2200	1980	1660	1340



GND SPEED KTS	80	100	120	140	160	180
ILS GS or LOC DESCENT ANGLE 3'	425	531	637	743	849	955
MAPt AT D1.5 IHND (GS OUT)						

STRAIGHT-IN LANDING RWY 27				CIRCLE - TO - LAND (No circling South of Aerodrome)		
ILS		LOC (GS OUT) CDFA		Max Kts	MDA (H)	VIS
DA (H)	916' (215')	MDA (H)	1180' (477')	100	1350' (647')	3000m
FULL	ALS OUT	FULL	ALS OUT	135		
A	RVR 550m	RVR 1200m	RVR 1500m	RVR 1500m	1580' (877')	4000m
B				RVR 2200m		
C						
D						

CHANGES : NEW PROCEDURE

IPDC, DTE OF OPS (T & H)

SURVEY PERIOD : 2021-22 & 2023-24