

2-1

VIDX
HINDAN

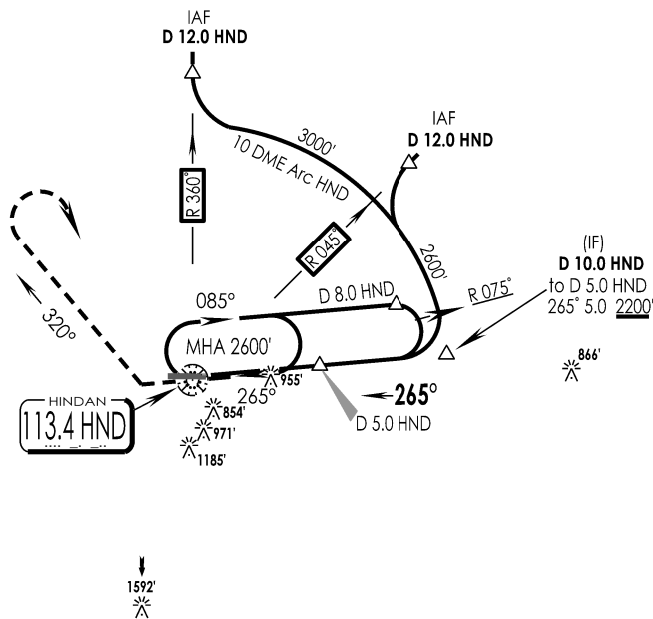
IAF
11 JAN 25

HINDAN, INDIA
VOR RWY 27

HINDAN Tower 130.1, VC		HINDAN Approach 134.2, UC, VC		ATIS 113.4		2600' MSA HND VOR
VOR HND 113.4	FINAL Apch Crs 265°	FAF D 5.0 HND 2200'	MDA (H) 1210' (507')		Apt Elev 703' RWY 701'	
MISSED APCH: Climb Straight ahead to 1500', Turn RIGHT hdg 320° Climb to 2600', turn RIGHT to join VOR hold at 2600' or as directed by ATC.						
Alt Set: hPa	Rwy Elev: 25 hPa	Trans level: By ATC	Trans alt: 5000'			

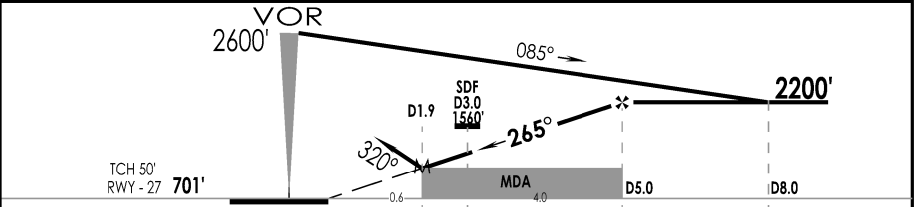
DME Required

1 inch = 7.5 NM
7.5 NM
0
7.5 NM



- Holding and initial approach speeds restricted to max 220 KTS IAS.
- Avoid crossing south of R-072 DPN.

HND DME	2.0	3.0	4.0	5.0		
ALTITUDE (ft)	1240	1570	1890	2200		



GND SPEED KTS	80	100	120	140	160	180	↑ 1500' ↻ 320° ↑ 2600'
DESCENT ANGLE 3.0°	425	531	637	743	849	955	

STRAIGHT-IN LANDING RWY 27 CDFA			CIRCLE - TO - LAND (No circling South of Aerodrome)		
MDA(H) 1210' (507')			Max Kts		
FULL			ALS OUT		
RVR 1500m			MDA (H)		
RVR 1600m			VIS		
RVR 2400m			100		
			135		
			180		
			205		
			1350' (647')		
			3000m		
			1580' (877')		
			4000m		

CHANGES : NEW PROCEDURE

IPDC, DTE OF OPS (T & H)

SURVEY PERIOD : 2021-22 & 2023-24