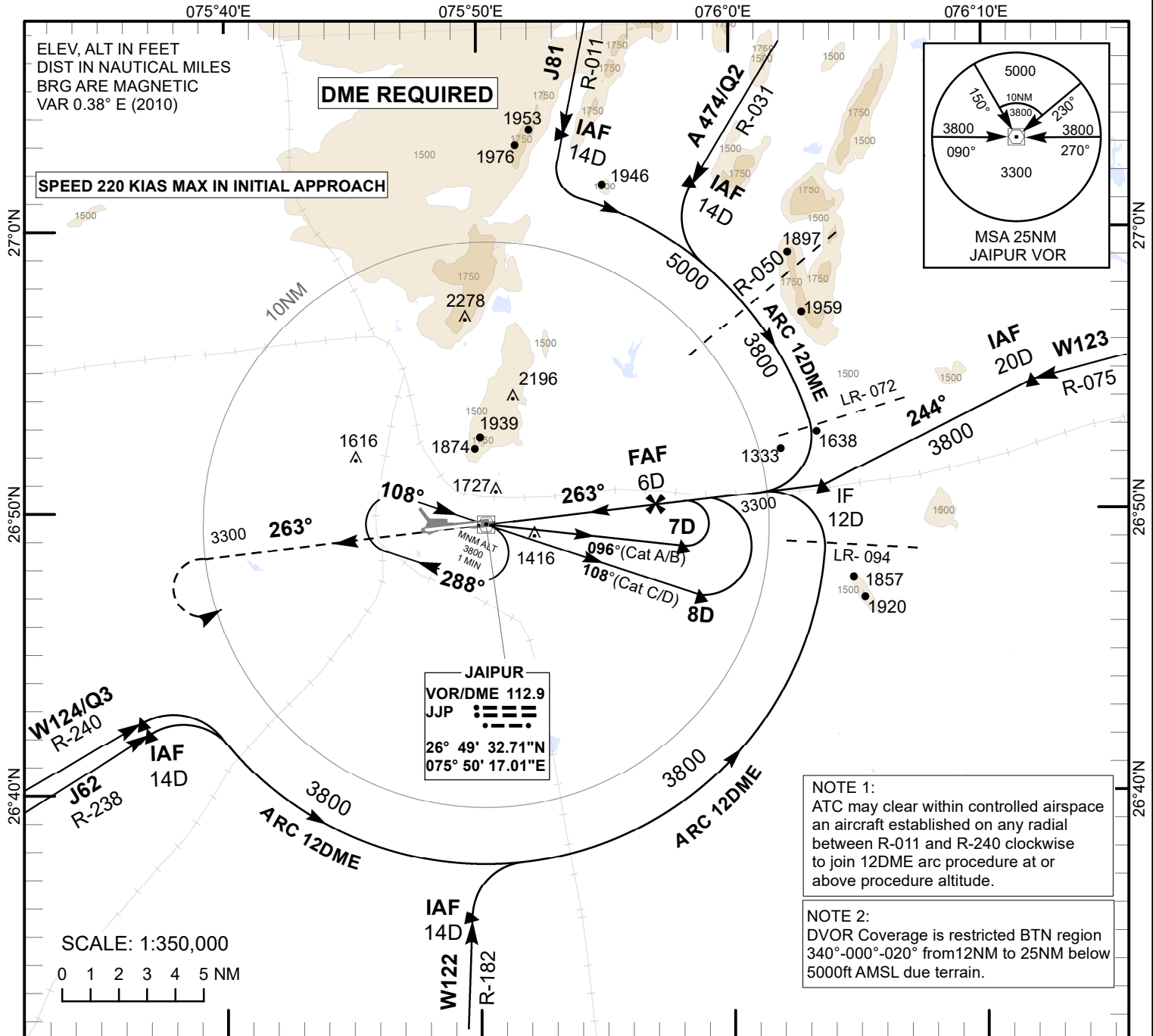


**INSTRUMENT
APPROACH
CHART**

AERODROME ELEV 1268 FT
HEIGHTS RELATED TO
THR RWY 26 - ELEV 1247 FT

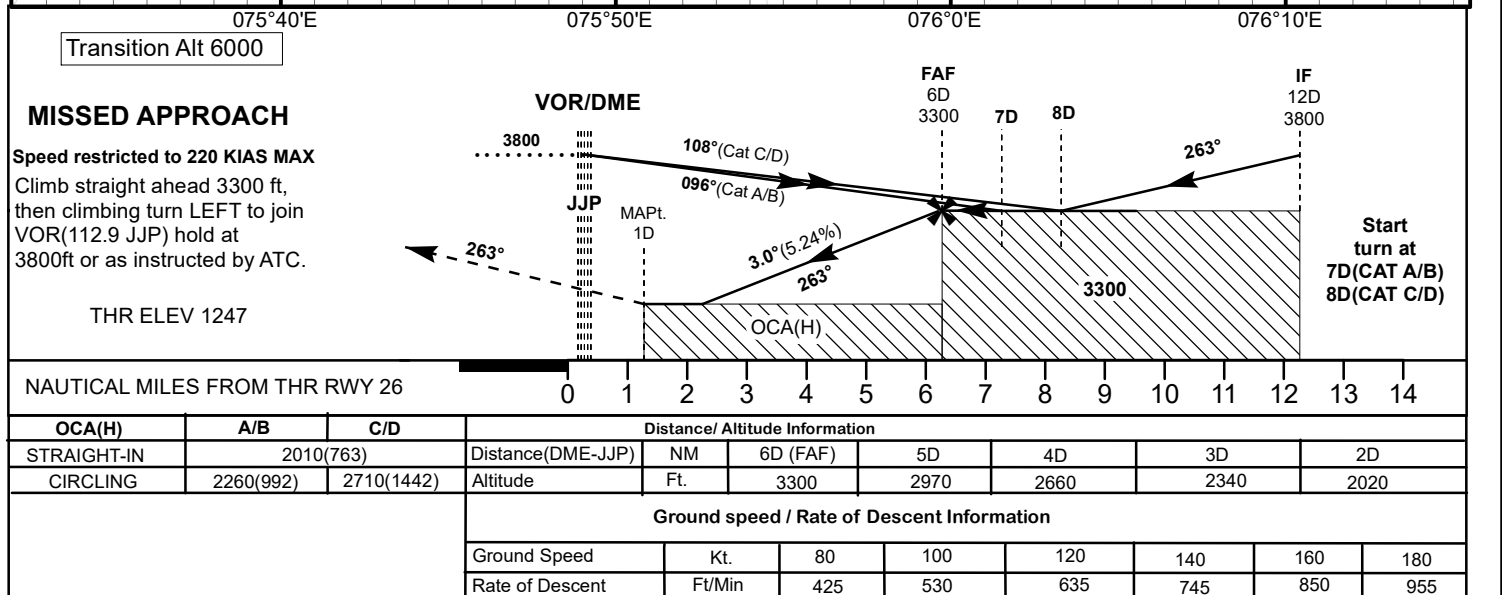
APP 119.750/120.225
TWR 125.250/124.300

JAIPUR (VIJP)
INDIA
VOR RWY 26



NOTE 1:
ATC may clear within controlled airspace an aircraft established on any radial between R-011 and R-240 clockwise to join 12DME arc procedure at or above procedure altitude.

NOTE 2:
DVOR Coverage is restricted BTN region 340°-000°-020° from 12NM to 25NM below 5000ft AMSL due terrain.



Transition Alt 6000

MISSED APPROACH
Speed restricted to 220 KIAS MAX
Climb straight ahead 3300 ft, then climbing turn LEFT to join VOR(112.9 JJP) hold at 3800ft or as instructed by ATC.
THR ELEV 1247

NAUTICAL MILES FROM THR RWY 26

OCA(H)	A/B	C/D	Distance/ Altitude Information						
STRAIGHT-IN	2010(763)		Distance(DME-JJP)	NM	6D (FAF)	5D	4D	3D	2D
CIRCLING	2260(992)	2710(1442)	Altitude	Ft.	3300	2970	2660	2340	2020
Ground speed / Rate of Descent Information									
Ground Speed	Kt.	80	100	120	140	160	180		
Rate of Descent	Ft/Min	425	530	635	745	850	955		