

| | | |
|---|---|-------------|
| TEL: 91-11-24632950 Extn: 2219/2233 AFS: VIDDYXAX FAX: 91-11-24615508 Email: gmais@aai.aero | INDIA AERONAUTICAL INFORMATION SERVICE AIRPORTS AUTHORITY OF INDIA RAJIV GANDHI BHAVAN SAFDARJUNG AIRPORT NEW DELHI – 110003 | 35/2019 |
| | | 13 FEB 2019 |

File No. AAI/ATM/AIS/09-09/2019

Following supplement is issued for information, guidance and necessary action.

sd/-

DR. GURUPRASAD MOHAPATRA
CHAIRMAN
AIRPORTS AUTHORITY OF INDIA

[EFFECTIVE DATE: 28 MAR 2019]

AERODROME DATA
KHAJURAHO AIPORT (VEKO)

AD 2. AERODROMES

VEKO AD 2.2 AERODROME GEOGRAPHICAL AND ADMINISTRATIVE DATA

| | | |
|---|---|---|
| 1 | Aerodrome reference point coordinates and its site | 244911.39N 0795506.87E 198.62 DEG / 917M from physical beginning of RWY 19 |
| 3 | Aerodrome elevation and reference temperature | 731 FT/ 43 DEG C Elevation in EGM-08 |
| 4 | Magnetic Variation, date of information and annual change | 0.250 DEG W(2010) / 0.017 DEG E |

Amend VEKO AD 2.2 of eAIP India accordingly.

VEKO AD 2.8 APRONS, TAXIWAYS AND CHECK LOCATIONS/POSITIONS DATA

| | | | |
|---|--|-------------|--|
| 1 | Designation, surface and strength of aprons | Designation | Refer Aircraft Parking Docking Charts |
| | | Surface | |
| | | Strength | |
| 2 | Designation, width, surface and strength of taxiways | Designation | Refer Aircraft Parking Docking Charts |
| | | Width | |
| | | Surface | |
| | | Strength | |

| | | |
|---|-----------------------------|--|
| 4 | Location of VOR checkpoints | TWY A: 244831.93N 0795455.82E/ELEV 728 FT. TWY B: 244838.44N 0795457.53E/ELEV 728 FT. TWY C: 244906.06N 0795504.99E/ELEV 717 FT. All Elevation in EGM-08 |
| 6 | Remarks | 1. Coordinates of Taxi Holding Position i. TWY A: 244831.888N0795455.991E/ELEV 728 FT ii. TWY B: 244838.403N0795457.007E/ELEV 728 FT iii. TWY C: 244906.059N0795504.989E/ELEV 717 FT iv. TWY D: 244938.139N0795513.345E/ELEV 691 FT 2. Coordinates of RWY/TWY intersection point i. TWY A: 244831.196N 0795459.159E/ELEV 730 FT ii. TWY B: 244837.711N 0795500.865E/ELEV 730 FT iii. TWY C: 244905.400N 0795508.100E/ELEV 719 FT 3. All Elevation in EGM-08 |

Amend VEKO AD 2.8 of eAIP India accordingly.

VEKO AD 2.10 AERODORME OBSTACLES

| RWY/Area Affected | Obstacle Type | Coordinates (WGS-84) | Elevation (FT) EGM-08 | Marking /LGT | Remarks |
|--------------------|-----------------------------|---------------------------|-----------------------|--------------|---|
| 1 | 2 | 3 | 4 | 5 | 6 |
| APCH-01 TKOF-19 | Tree | 244819.53N 0795500.54E | 763 | - | Group Of Trees |
| APCH-01 TKOF-19 | Natural High Ground | 244713.99N 0795453.10E | 943 | - | Dulerri Hill Top |
| APCH-01 TKOF-19 | Pole On Natural High Ground | 244639.14N 0795419.95E | 1056 | LGT | Hill Obstruction Light Top - 321.96 M Shed Top - 321.82M Hill Top - 317.84M |
| APCH-01 TKOF-19 | Other | 244810.25N 0795446.55E | 768 | - | Lightning Arrester |
| APCH-01 TKOF-19 | Other | 244810.75N 0795447.41E | 768 | - | Lightning Arrester |
| APCH-01 TKOF-19 | Other | 244811.24N 0795446.59E | 768 | - | Lightning Arrester |
| APCH-01 TKOF-19 | Tree | 244809.96N 0795450.32E | 779 | | Tree |

| | | | | | |
|-------------------------------|---------------------|---------------------------|-----|-----|---|
| APCH-01 TKOF-19 | Other | 244817.38N 0795454.40E | 753 | | Mobile Road Traffic |
| APCH-01 TKOF-19 | Other | 244817.19N 0795455.23E | 753 | | Mobile Road Traffic |
| APCH-01 TKOF-19 | Tree | 244819.04N 0795453.51E | 749 | | Group Of Trees |
| APCH-01 TKOF-19 | Pole On Building | 244819.73N 0795453.38E | 747 | LGT | Localizer Room Obstruction Light Top - 227.67M Lightning Arrester Top - 227.17M Light Pole Top - 226.25M Building Top- 225.66M |
| APCH-19 TKOF-01 | Tree | 244957.30N 0795514.07E | 746 | | Group Of Trees |
| APCH-19 TKOF-01 | Tree | 244950.30N 0795522.13E | 737 | | Group Of Trees |
| APCH-19 TKOF-01 | Pole On Building | 244949.76N 0795520.63E | 713 | LGT | Temple Obstruction Light Top - 217.195M Temple Top - 216.766M |
| APCH-19 TKOF-01 | Tree | 244947.32N 0795523.55E | 722 | | Group Of Trees |
| APCH-19 TKOF-01 | Tree | 244948.39N 0795520.33E | 710 | | Tree |
| APCH-19 TKOF-01 | Tree | 244944.49N 0795524.29E | 725 | | Group Of Trees |
| APCH-19 TKOF-01 | Building | 244943.20N 0795523.36E | 698 | | Security Hut Top |
| APCH-19 TKOF-01 | Tree | 244943.27N 0795523.72E | 720 | | Group Of Trees |
| In Circling Area and at AD | Tree | 244851.54N 0795512.85E | 781 | | Group Of Trees |
| In Circling Area and at AD | Tree | 244846.52N 0795509.22E | 771 | | Group Of Trees |
| In Circling Area and at AD | Tree | 244841.77N 0795508.47E | 782 | | Group Of Trees |

| | | | | | |
|----------------------------|-----------------------------|---------------------------|------|-----|---|
| In Circling Area and at AD | Fence | 244840.08N 0795507.07E | 744 | | Airport Boundary Wall With Fencing On Top |
| In Circling Area and at AD | Tree | 244837.51N 0795507.00E | 788 | | Group Of Trees |
| In Circling Area and at AD | Fence | 244837.50N 0795506.58E | 748 | | Airport Boundary Wall With Fencing On Top |
| In Circling Area and at AD | Tree | 244833.47N 0795506.52E | 775 | | Group Of Trees |
| In Circling Area and at AD | Fence | 244832.87N 0795506.33E | 757 | | Airport Boundary Wall With Fencing On Top |
| In Circling Area and at AD | Fence | 244830.89N 0795505.79E | 759 | | Airport Boundary Wall With Fencing On Top |
| In Circling Area and at AD | Tree | 244821.18N 0795503.46E | 778 | | Group Of Trees |
| In Circling Area and at AD | Pole On Natural High Ground | 244639.99N 0795502.27E | 1061 | LGT | Hill, Obstruction Light Top-323.41M Hill Top - 320.86M |
| In Circling Area and at AD | Other | 244654.92N 0795406.51E | 904 | | Cellphone Mast (Idea) |
| In Circling Area and at AD | Other | 244700.34N 0795356.63E | 922 | | Cellphone Mast (Airtel) |
| In Circling Area and at AD | Pole On Natural High Ground | 244748.45N 0795427.12E | 987 | LGT | Hill Obstruction Light Top -300.70M Pole Top - 300.68M Hill Top - 296.18M |
| In Circling Area and at AD | Sign | 244832.46N 0795458.22E | 733 | | Sign Board |
| In Circling Area and at AD | Sign | 244836.97N 0795459.41E | 733 | | Sign Board |
| In Circling Area and at AD | Sign | 244838.97N 0795459.93E | 733 | | Sign Board |
| In Circling Area and at AD | Fence | 244933.70N 0795509.95E | 711 | | Airport Boundary Wall With Fencing On Top |
| In Circling Area and at AD | Tree | 244935.29N 0795504.68E | 774 | | Group Of Trees |
| In Circling Area and at AD | Tree | 244939.56N 0795505.55E | 778 | | Group Of Trees |

| | | | | | |
|----------------------------|---------|---------------------------|-----|--|---|
| In Circling Area and at AD | Tree | 244934.38N 0795512.98E | 705 | | Tree |
| In Circling Area and at AD | Sign | 244937.34N 0795513.18E | 695 | | Sign Board |
| In Circling Area and at AD | Sign | 244938.94N 0795513.60E | 695 | | Sign Board |
| In Circling Area and at AD | Tree | 244938.79N 0795514.83E | 699 | | Tree |
| In Circling Area and at AD | Sign | 244936.71N 0795515.09E | 696 | | Sign Board |
| In Circling Area and at AD | Tree | 244948.83N 0795507.89E | 773 | | Group Of Trees |
| In Circling Area and at AD | Tree | 244952.60N 0795510.64E | 768 | | Group Of Trees |
| In Circling Area and at AD | Tree | 244955.65N 0795511.12E | 757 | | Group Of Trees |
| In Circling Area and at AD | Tree | 244940.84N 0795524.81E | 727 | | Group Of Trees |
| In Circling Area and at AD | Tree | 244939.40N 0795523.31E | 743 | | Group Of Trees |
| In Circling Area and at AD | Fence | 244939.40N 0795522.59E | 697 | | Airport Boundary Wall With Fencing On Top |
| In Circling Area and at AD | Tree | 244937.85N 0795525.96E | 747 | | Group Of Trees |
| In Circling Area and at AD | Tree | 244934.64N 0795521.75E | 725 | | Group Of Trees |
| In Circling Area and at AD | Nav-Aid | 244931.45N 0795519.36E | 714 | | Group Monitoring Antenna |
| In Circling Area and at AD | Tree | 244928.67N 0795523.91E | 761 | | Group Of Trees |
| In Circling Area and at AD | Tree | 244929.10N 0795521.61E | 748 | | Group Of Trees |
| In Circling Area and at AD | Fence | 244928.77N 0795519.82E | 708 | | Airport Boundary Wall With Fencing On Top |

| | | | | | |
|----------------------------|---------------------|---------------------------|-----|-----|---|
| In Circling Area and at AD | Antenna On Building | 244929.49N 0795519.00E | 723 | | Glide Path Room, Antenna Top - 220.55M Room Top- 216.85M. |
| In Circling Area and at AD | Antenna | 244929.60N 0795519.10E | 721 | | Antenna Top |
| In Circling Area and at AD | Nav-Aid | 244929.63N 0795518.93E | 748 | LGT | Glide Path Antenna, Lightning Arrester Top - 228.15 M Obstruction Light Top - 227.87 M, Glide Path Antenna Top - 227.11M. |
| In Circling Area and at AD | Tree | 244907.70N 0795458.94E | 799 | | Group Of Trees |
| In Circling Area and at AD | Tank | 244910.40N 0795459.86E | 780 | | Water Tank, Ladder Top - 237.82 M, Water Tank Top - 237.31 M |
| In Circling Area and at AD | Tree | 244909.50N 0795502.57E | 740 | | Group Of Trees |
| In Circling Area and at AD | Tree | 244914.62N 0795500.52E | 780 | | Group Of Trees |
| In Circling Area and at AD | Tree | 244912.91N 0795501.93E | 771 | | Group Of Trees |
| In Circling Area and at AD | Tree | 244914.34N 0795503.75E | 752 | | Group Of Trees |
| In Circling Area and at AD | Tree | 244942.20N 0795525.75E | 723 | | Group Of Trees |
| In Circling Area and at AD | Building | 244919.24N 0795517.99E | 722 | | Building Top |
| In Circling Area and at AD | Tree | 244917.86N 0795518.52E | 758 | | Group Of Trees |
| In Circling Area and at AD | Tree | 244915.17N 0795516.55E | 759 | | Group Of Trees |
| In Circling Area and at AD | Tree | 244910.74N 0795517.66E | 765 | | Group Of Trees |
| In Circling Area and at AD | Tree | 244906.71N 0795515.35E | 763 | | Group Of Trees |

| | | | | | |
|----------------------------|---------------------|---------------------------|------|--|--|
| In Circling Area and at AD | Tree | 244858.06N 0795512.67E | 767 | | Group Of Trees |
| In Circling Area and at AD | Tree | 244858.40N 0795515.15E | 772 | | Group Of Trees |
| In Circling Area and at AD | Tree | 244852.83N 0795514.62E | 784 | | Group Of Trees |
| In Circling Area and at AD | Tree | 244826.19N 0795451.74E | 779 | | Tree |
| In Circling Area and at AD | Rod On Building | 244905.77N 0795459.37E | 798 | | Atc Tower Lightning Arrester Top |
| In Circling Area and at AD | Building | 244901.84N 0795459.61E | 753 | | Fire Station, Staircase Room Top - 229.38 M, Antenna Top-228.39 M Light Pole Top-226.49M Building Top-225.46 M |
| In Circling Area and at AD | Other | 244909.37N 0795512.39E | 740 | | Wind Sock |
| In Circling Area and at AD | Natural High Ground | 245001.68N 0795316.51E | 938 | | Hill Top |
| In Circling Area and at AD | Natural High Ground | 245015.77N 0795249.20E | 1003 | | Hill Top |
| In Circling Area and at AD | Natural High Ground | 244903.22N 0795644.53E | 1094 | | Tikuri Hill Top |
| In Circling Area and at AD | Natural High Ground | 244911.11N 0795650.48E | 1065 | | Hill Top |
| In Circling Area and at AD | Natural High Ground | 245052.43N 0795834.89E | 1223 | | Bamnora Hill Top |
| In Circling Area and at AD | Natural High Ground | 245106.61N 0795846.62E | 1274 | | Bamnora Hill Top |
| In Circling Area and at AD | Natural High Ground | 244321.01N 0795640.36E | 1589 | | Baharpura Hill Top |
| In Circling Area and at AD | NATURAL HIGH GROUND | 244301.65N 0795733.31E | 1526 | | Baharpura Hill Top |

Replace table in VEKO AD 2.10 of e-AIP India with the above table.

VEKO AD 2.12 RUNWAY PHYSICAL CHARACTERISTICS

| Designations | TRUE Bearings | Dimensions of RWY (M) | Strength of pavement (PCN) and associated data and surface of each runway and associated stopway | Geographical coordinates for threshold and runway end |
|---|--|------------------------------------|--|--|
| 1 | 2 | 3 | 4 | 5 |
| 01 | 013.45 DEG | 2286 X 45 | 53/F/C/W/T Asphalt | THR 244841.84N 0795501.96E RWY END 244939.70N 0795517.10E |
| 19 | 193.45 DEG | 2286 X 45 | 53/F/C/W/T Asphalt | THR 244939.70N 0795517.10E RWY END 244827.45N 0795458.18E |
| THR elevation and highest elevation of TDZ of precision APP RWY | Slope of runway and associated stopway | Dimensions of stopway (M) | Dimensions of clearway (M) | Dimensions of strips (M) |
| 6 | 7 | 8 | 9 | 10 |
| THR: 731 FT TDZ: 731 FT | 0.69% | | NIL | 2406 X 150 M |
| THR: 691 FT TDZ: 708 FT | -0.69% | | NIL | 2406 X 150 M |
| Dimensions of runway end safety areas (M) | Location (which runway end) and description of arresting system (if any) | Existence of an obstacle-free zone | Remarks. | |
| 11 | 12 | 13 | 14 | |
| 90 X 90 | NIL | NIL | i. Elevations in EGM 08 | |
| 90 X 90 | NIL | NIL | i. Elevations in EGM 08 | |

Amend VEKO AD 2.12 of eAIP India accordingly.

VEKO AD 2.13 DECLARED DISTANCES

| RWY Designator | TORA (M) | TODA (M) | ASDA (M) | LDA (M) | Remarks Including runway entry or start point where alternative reduced declared distances have been declared. |
|----------------|----------|----------|----------|---------|---|
| 1 | 2 | 3 | 4 | 5 | 6 |
| 01 | 2286 | 2286 | 2286 | 1830 | |
| 19 | 2286 | 2286 | 2286 | 2286 | |

Amend VEKO AD 2.13 of eAIP India accordingly.

VEKO AD 2.19 RADIO NAVIGATION AND LANDING AIDS

| Type of aids, magnetic and type of supported operation for ILS/MLS, basic GNSS, SBAS and GBAS, and for VOR/ILS/MLS station used for technical line-up of the aid | Identification | Frequency(ies), Channel number(s), Service provider, and reference path identifier(s) (RPI), as appropriate | Hours of operation, as appropriate; | Geographical coordinates of the position of the transmitting antenna | Elevation of transmitting antenna of DME/ elevation of GBAS reference point | Service volume radius from the GBAS reference point | Remarks |
|--|----------------|---|-------------------------------------|--|---|---|---|
| 1 | 2 | 3 | 4 | 5 | 6 | 7 | 8 |
| LOC19 | IKJR | 110.700 MHz | AS ATS | 244819.239N 0795455.975E | | | |
| GP19 | IKJR | 330.200MHz | AS ATS | 244929.640N 0795518.915E | | | |
| GP DME | IKJR | CH44X | AS ATS | 244929.5N 0795518.2E | 729 FT | | Collocated with GP19 |
| DVOR | KKJ | 116.400 MHz | H24 | 244810.760N 0795446.805E | | | |
| DME | KKJ | CH111X | H24 | 244811.050N 0795446.844E | 762 FT | | Collocated with DVOR Elevation in EGM-08 |
| NDB | KJ | 403 KHz | AS ATS | 244913.737N 0795500.790E | | | |

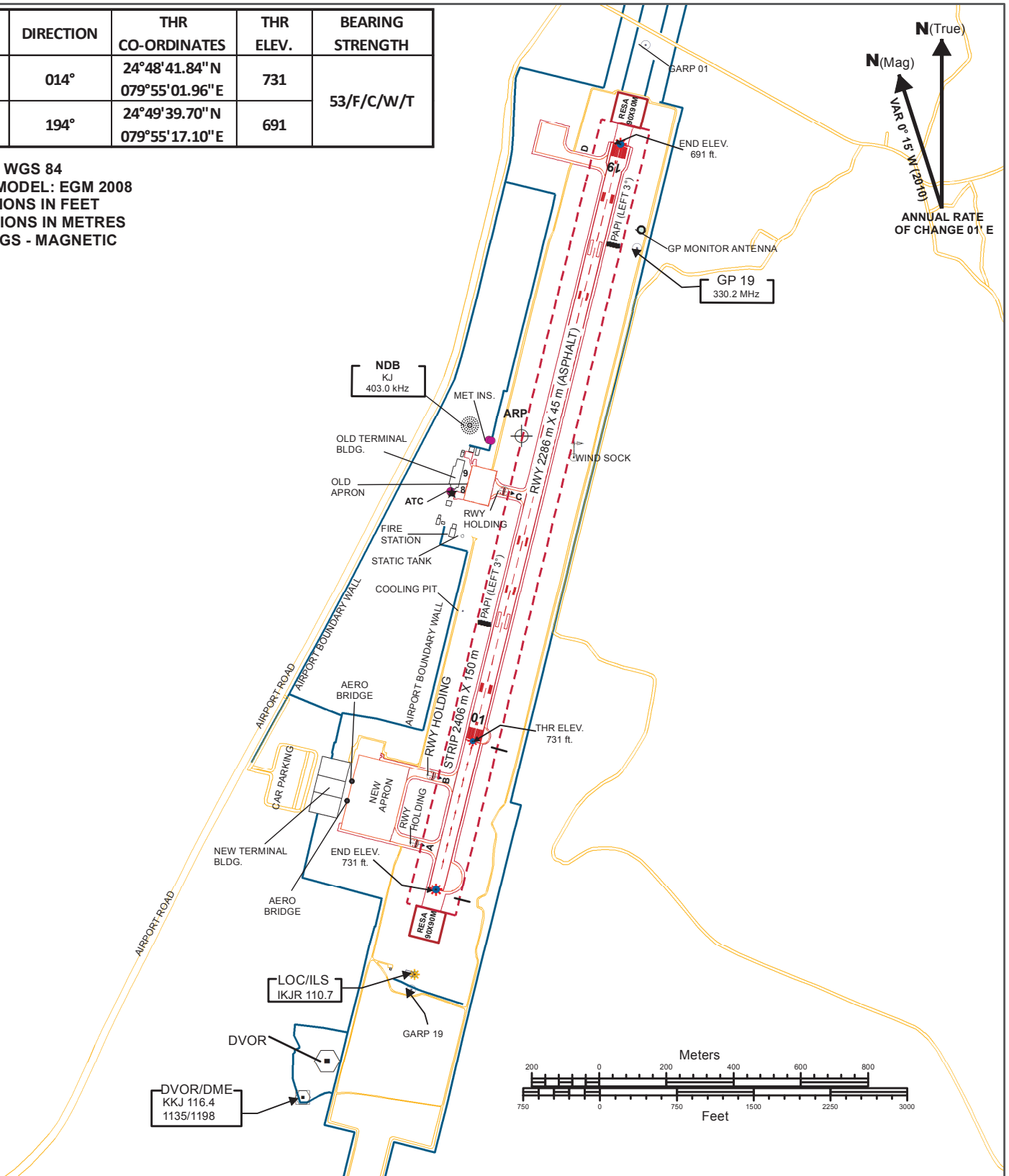
Amend VEKO AD 2.19 and ENR4.1 of e-AIP India accordingly.

AMENDMENTS/ CANCELLATIONS

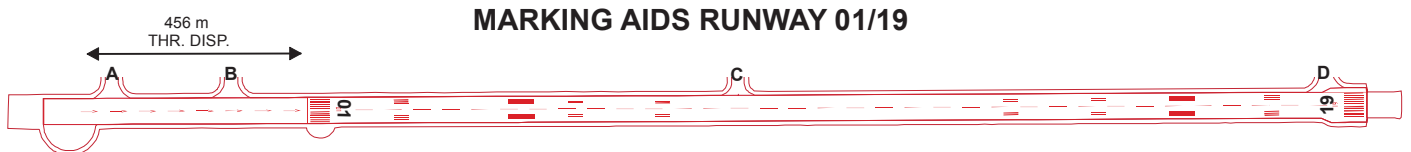
1. **Insert** following Charts in VEKO AD 2.24 of eAIP India with the corresponding charts of this AIP Supplement and amend list of charts:
 - i. Aerodrome Chart
 - ii. Aircraft Parking/Docking Chart - Old Apron
 - iii. Aircraft Parking/Docking Chart – New Apron
2. **Replace** following Charts in VEKO AD 2.24 of eAIP India with the corresponding charts of this AIP Supplement:
 - i. Aerodrome Obstacle Chart Type A (Operating Limitations) RWY 01
 - ii. Aerodrome Obstacle Chart Type A (Operating Limitations) RWY 19
 - iii. ILS Procedure RWY 19
 - iv. NDB Procedure RWY 19

| RWY | DIRECTION | THR CO-ORDINATES | THR ELEV. | BEARING STRENGTH |
|-----|-----------|-----------------------------------|-----------|------------------|
| 01 | 014° | 24°48'41.84" N 079°55'01.96" E | 731 | 53/F/C/W/T |
| 19 | 194° | 24°49'39.70" N 079°55'17.10" E | 691 | |

DATUM: WGS 84
GEOID MODEL: EGM 2008
ELEVATIONS IN FEET
DIMENSIONS IN METRES
BEARINGS - MAGNETIC



MARKING AIDS RUNWAY 01/19



NOTE: AERONAUTICAL GROUND LIGHTS ARE NOT SHOWN IN THIS CHART.

AIRCRAFT PARKING / DOCKING CHART

APRON ELEV. 728 ft.

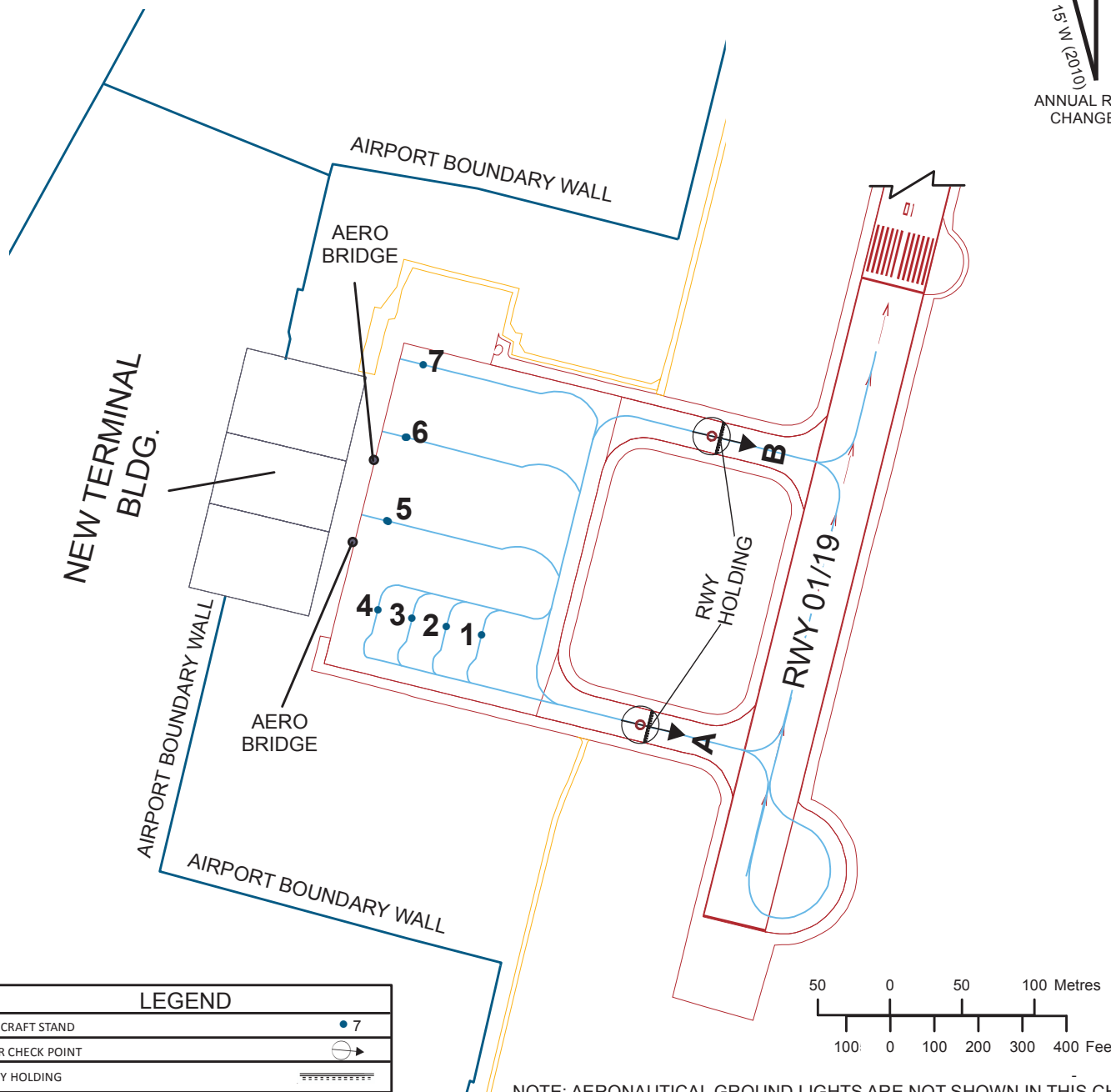
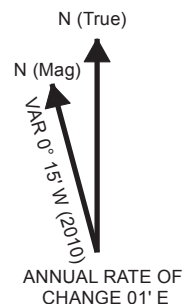
TWR 118.15/124.35

KHAJURAHU, INDIA

NEW APRON

KHAJURAHU AIRPORT

DATUM : WGS 84
 GEOID MODEL : EGM 2008
 ELEVATIONS IN FEET
 DIMENSIONS IN METRES



NOTE: AERONAUTICAL GROUND LIGHTS ARE NOT SHOWN IN THIS CHART.

| LEGEND | |
|-----------------|-----|
| AIRCRAFT STAND | ● 7 |
| VOR CHECK POINT | ⊕ → |
| RWY HOLDING | ⋯⋯⋯ |

| | PCN | WIDTH (m) |
|-------|-------------|-----------|
| TWY A | 100/R/B/W/T | 23.0 |
| TWY B | 85/R/B/W/T | 23.0 |

| BAY DETAILS | | | | | | | |
|-----------------|--------------------------------------|------------|--------|-----------------|------------|-----------------------|------------------|
| PARKING BAY NO. | WGS CO-ORDINATES | WING SPAN | LENGTH | ELEVATION (ft.) | PCN | REMARKS | CONTACT / REMOTE |
| PB 1 | 24° 48' 33.909" N 079° 54' 51.886" E | 21.5 | 20.5 | 726 | 76/R/B/W/T | POWER IN POWER OUT | REMOTE |
| PB 2 | 24° 48' 34.098" N 079° 54' 51.017" E | 21.5 | 20.5 | 727 | 76/R/B/W/T | POWER IN POWER OUT | REMOTE |
| PB 3 | 24° 48' 34.284" N 079° 54' 50.167" E | 21.5 | 20.5 | 727 | 76/R/B/W/T | POWER IN POWER OUT | REMOTE |
| PB 4 | 24° 48' 34.469" N 079° 54' 49.317" E | 21.5 | 20.5 | 727 | 76/R/B/W/T | POWER IN POWER OUT | REMOTE |
| PB 5 | 24° 48' 36.473" N 079° 54' 49.519" E | A-321/B739 | | 728 | 76/R/B/W/T | POWER IN PUSH BACK | CONTACT |
| PB 6 | 24° 48' 38.361" N 079° 54' 49.967" E | A-321/B739 | | 728 | 76/R/B/W/T | POWER IN PUSH BACK | CONTACT |
| PB 7 | 24° 48' 39.996" N 079° 54' 50.392" E | A-321/B739 | | 728 | 76/R/B/W/T | POWER IN PUSH BACK | REMOTE |

DATE OF AERONAUTICAL INFORMATION

JANUARY 2019

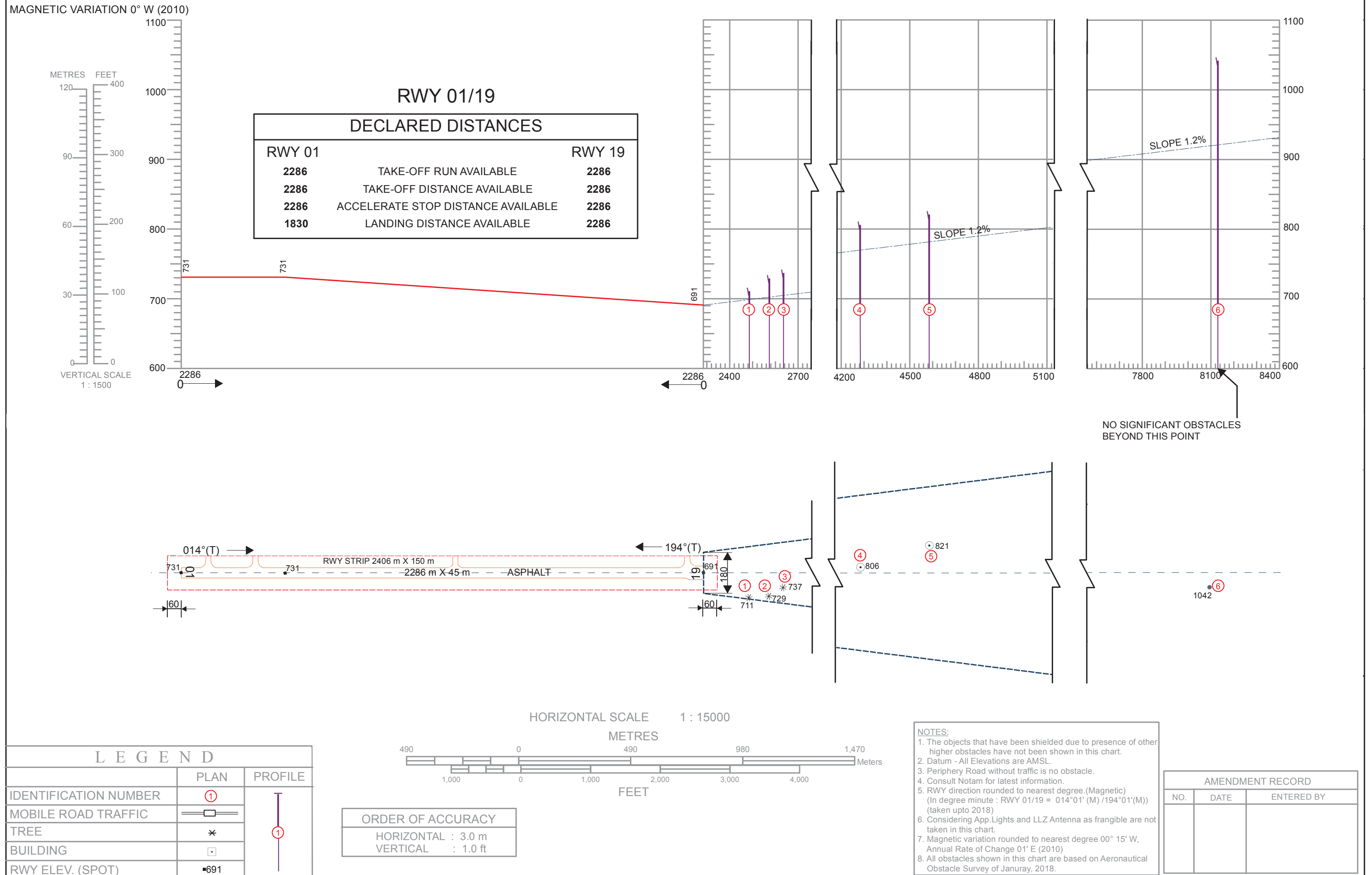
AERODROME OBSTACLE CHART

INDIA / KHAJURAHO

ELEVATIONS IN FEET
ALL OTHER DIMENSIONS IN METRES

TYPE - A (OPERATING LIMITATIONS)

KHAJURAHO AIRPORT / RWY 01



AERODROME OBSTACLE CHART

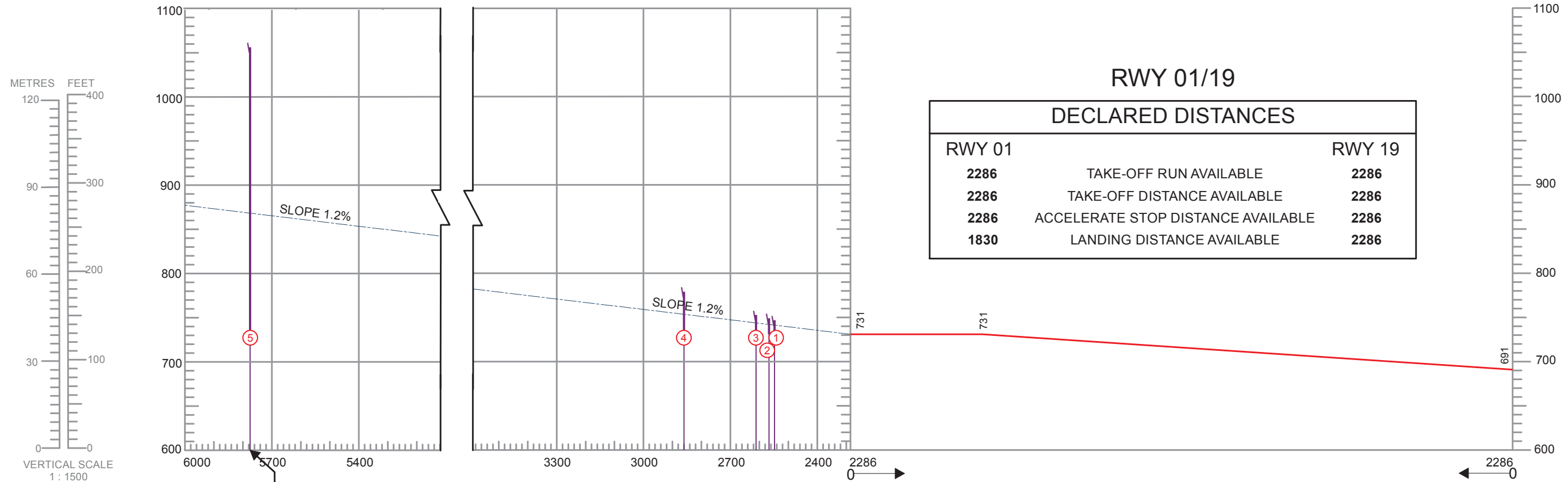
INDIA / KHAJURAHO

ELEVATIONS IN FEET
ALL OTHER DIMENSIONS IN METRES

TYPE - A (OPERATING LIMITATIONS)

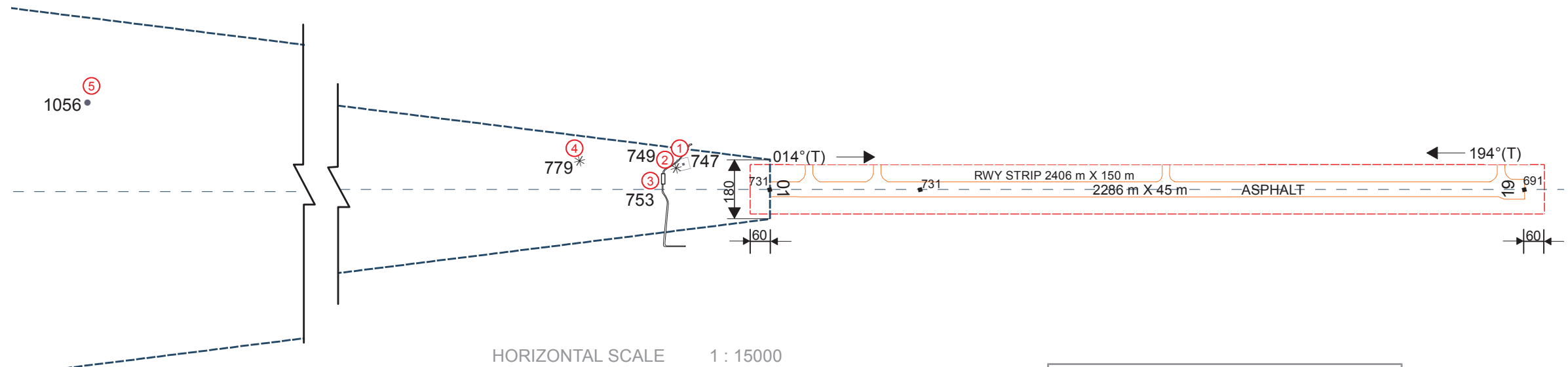
KHAJURAHO AIRPORT / RWY 19

MAGNETIC VARIATION 0° W (2010)



| RWY 01/19 | | |
|--------------------|------------------------------------|--------|
| DECLARED DISTANCES | | |
| RWY 01 | | RWY 19 |
| 2286 | TAKE-OFF RUN AVAILABLE | 2286 |
| 2286 | TAKE-OFF DISTANCE AVAILABLE | 2286 |
| 2286 | ACCELERATE STOP DISTANCE AVAILABLE | 2286 |
| 1830 | LANDING DISTANCE AVAILABLE | 2286 |

NO SIGNIFICANT OBSTACLES
BEYOND THIS POINT



| LEGEND | | |
|-----------------------|------|---------|
| | PLAN | PROFILE |
| IDENTIFICATION NUMBER | ① | — |
| MOBILE ROAD TRAFFIC | ▬▬ | — |
| TREE | * | ① |
| BUILDING | □ | — |
| RWY ELEV. (SPOT) | ■691 | — |

| ORDER OF ACCURACY | |
|-------------------|----------|
| HORIZONTAL | : 3.0 m |
| VERTICAL | : 1.0 ft |

- NOTES:
- The objects that have been shielded due to presence of other higher obstacles have not been shown in this chart.
 - Datum - All Elevations are AMSL.
 - Periphery Road without traffic is no obstacle.
 - Consult Notam for latest information.
 - RWY direction rounded to nearest degree.(Magnetic) (In degree minute : RWY 01/19 = 014°01' (M) /194°01'(M)) (taken upto 2018)
 - Considering App.Lights and LLZ Antenna as frangible are not taken in this chart.
 - Magnetic variation rounded to nearest degree 00° 15' W, Annual Rate of Change 01' E (2010)
 - All obstacles shown in this chart are based on Aeronautical Obstacle Survey of Januray, 2018.

| AMENDMENT RECORD | | |
|------------------|------|------------|
| NO. | DATE | ENTERED BY |
| | | |

AERONAUTICAL INFORMATION UPTO - JAN 2019

Map Ref. : QA/TA/KHAJ/IN/1/2
Date of Issue : 16.08.2018
Supersedes Date : 06-02-2018

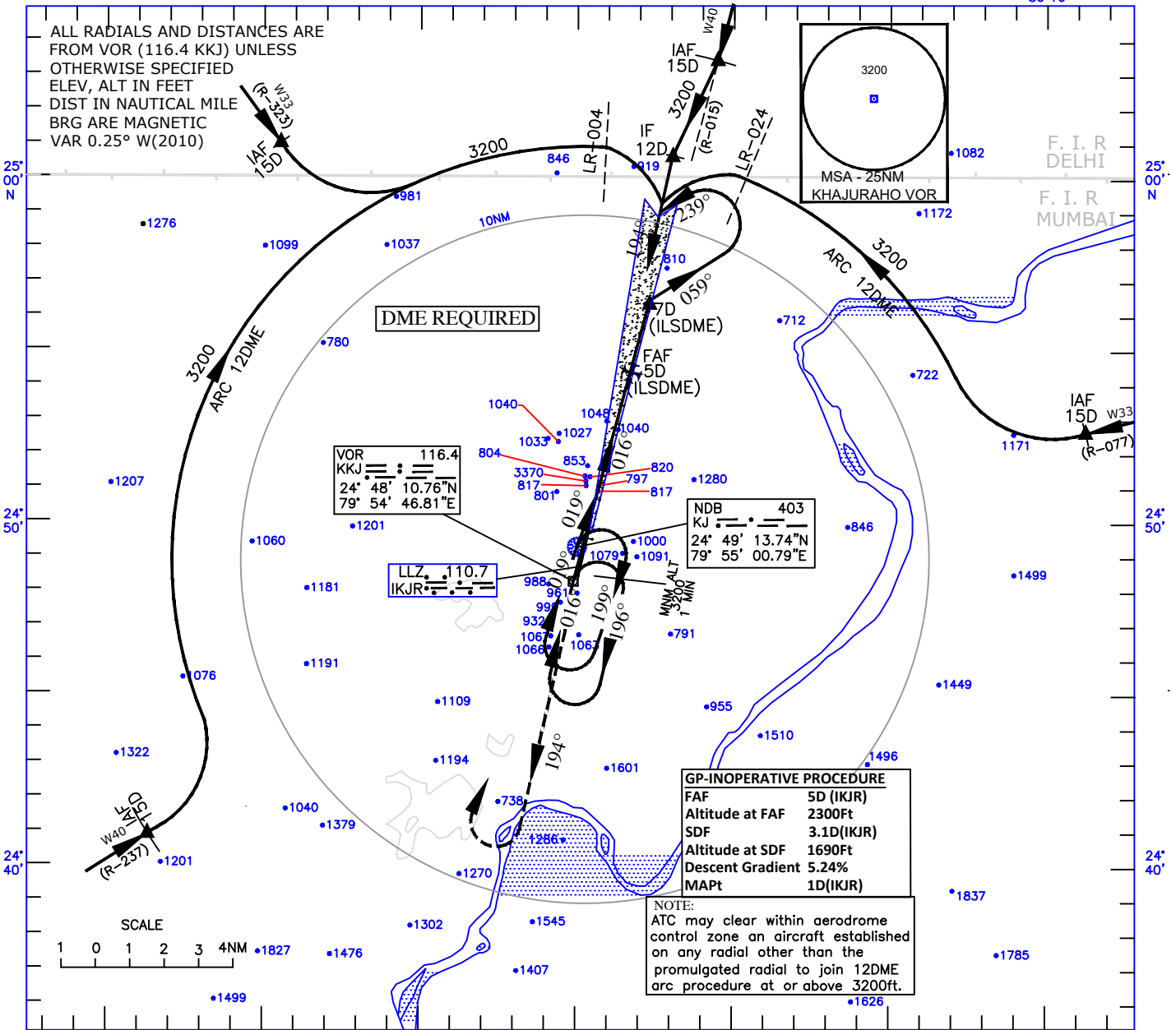
INSTRUMENT
APPROACH
CHART

AERODROME ELEV. 731ft.
HEIGHTS RELATED TO
THR RWY 19 ELEV.691ft

APP.118.15
TWR.118.15

KHAJURAH(O V E K O)
INDIA
ILS RWY 19
(Cat.A/B&C)

ALL RADIALS AND DISTANCES ARE FROM VOR (116.4 KKJ) UNLESS OTHERWISE SPECIFIED
ELEV, ALT IN FEET
DIST IN NAUTICAL MILE
BRG ARE MAGNETIC
VAR 0.25° W(2010)

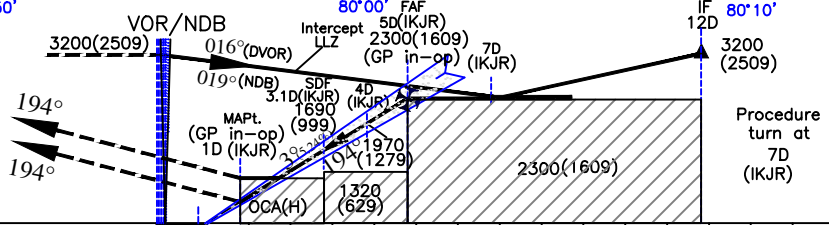


Transition Alt.4000

Missed Approach

Climb straight ahead to 3200ft., turn RIGHT to VOR/NDB to join holding at or as instructed by ATC.

ILS RDH 50
THR ELEV. 691



Nautical miles from THR RWY 19

| CATEGORY OF AIRCRAFT | O C A. (H) | | Distance (IKJR)/Altitude information for GP in-op Procedure: | | | | | | |
|----------------------|-------------|-----------|---|--------------------------|------|------|------|-----|-----|
| | A/B | C | Distance(NM) | 5D | 4D | 3D | 2D | | |
| STRAIGHT-IN | 1000(309) | 1000(309) | Altitude (ft.) | 2300 | 1970 | 1650 | 1330 | | |
| CIRCLING | 1580(849) | 1680(949) | Rate of Descent /Ground speed information for GP in-op Procedure: | | | | | | |
| GP in-op Procedure: | | | Ground speed (kt.) | 80 | 100 | 120 | 140 | 160 | |
| STRAIGHT-IN | WITH SDF | 1300(609) | 1300(609) | Rate of descent (ft/min) | 425 | 530 | 635 | 745 | 850 |
| | WITHOUT SDF | 1320(629) | 1320(629) | | | | | | |
| CIRCLING | | 1580(849) | 1680(949) | | | | | | |

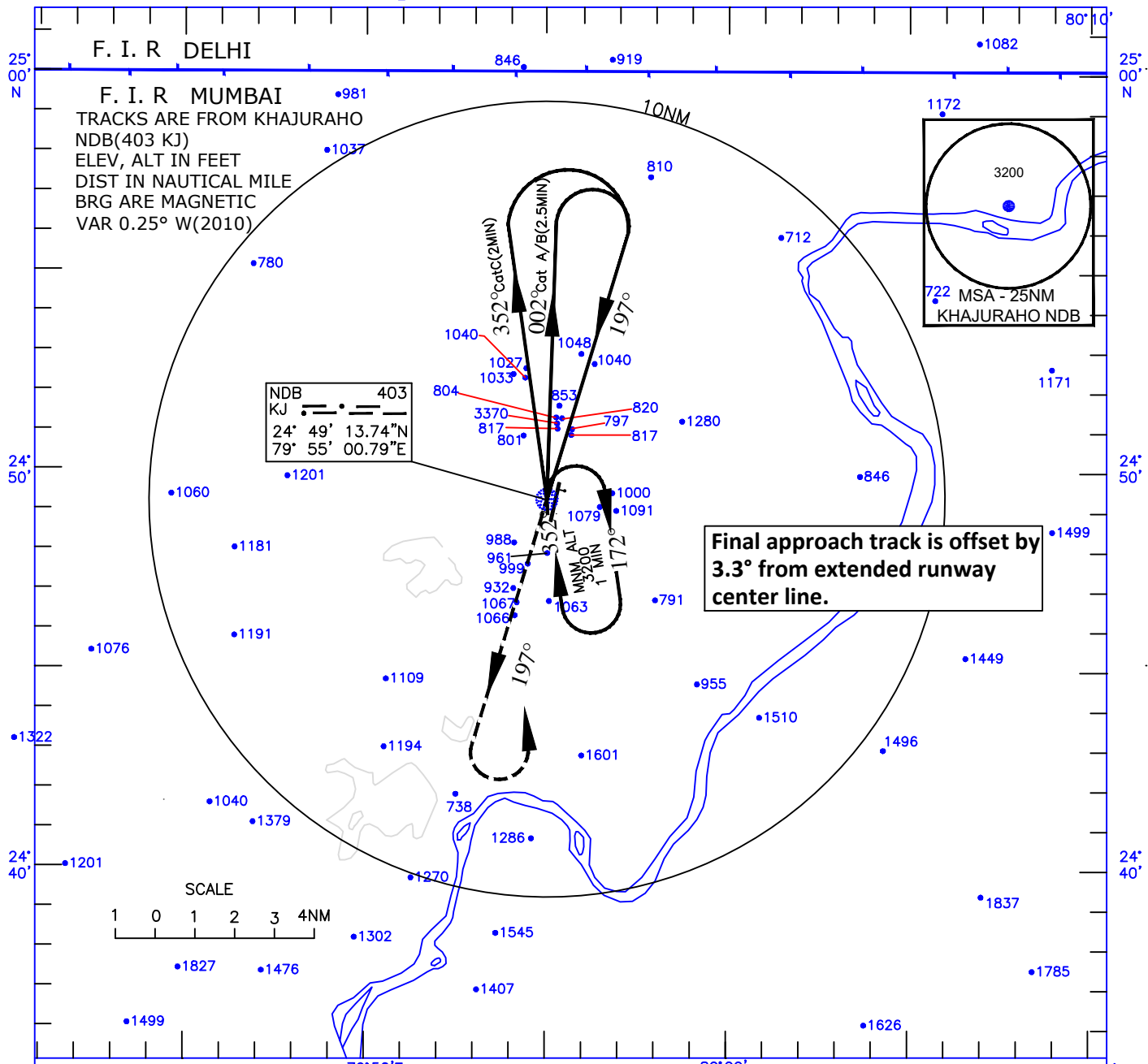
DRG. NO. AAI/23-IALC/97/28-03-2019

INSTRUMENT
APPROACH
CHART

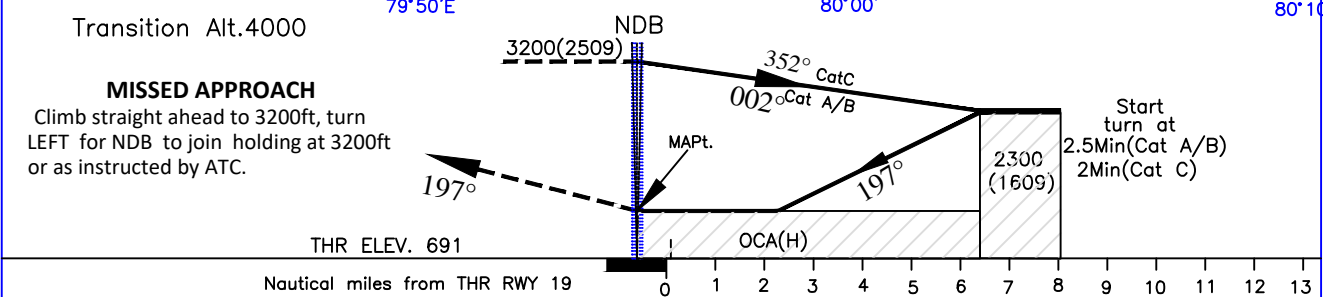
AERODROME ELEV 731.
HEIGHTS RELATED TO
THR RWY 19 ELEV 691

APP.118.15
TWR.118.15

KHAJURAHO(VEKO)
INDIA
NDB RWY 19
(Cat A/B/C)



Final approach track is offset by 3.3° from extended runway center line.



| O C A. (H) | | |
|----------------------|-----------|-----------|
| CATEGORY OF AIRCRAFT | A/B | C |
| STRAIGHT-IN | 1380(689) | 1380(689) |
| CIRCLING | 1580(849) | 1680(949) |

DRG. NO. AAI/31-IALC/90/28-03-2019