

TEL: 91-11-24632950 Extn: 2219/2233 AFS: VIDDYXAX FAX: 91-11-24615508 Email: gmais@aai.aero	INDIA AERONAUTICAL INFORMATION SERVICE AIRPORTS AUTHORITY OF INDIA RAJIV GANDHI BHAVAN SAFDARJUNG AIRPORT NEW DELHI – 110003	53/2020
		11 MAR 2020

File No. AAI/ATM/AIS/09-09/2020

Following supplement is issued for information, guidance and necessary action.

sd/-
अरविंद सिंह
ARVIND SINGH
अध्यक्ष/CHAIRMAN
भारतीय विमानपत्तन प्राधिकरण
AIRPORTS AUTHORITY OF INDIA

[EFFECTIVE DATE: 23 APR 2020]

AERODROME DATA
KOLHAPUR AIRPORT (VAKP)

VAKP AD 2. AERODROMES

VAKP AD 2.1 AERODROME LOCATION INDICATOR AND NAME

KOLHAPUR AIRPORT/ DOMESTIC

VAKP AD 2.2 AERODROME GEOGRAPHICAL AND ADMINISTRATIVE DATA

1	Aerodrome reference point coordinates and its site	163958.94N 0741725.73E Mag Brg 264.89 DEG from physical extremity of RWY 25.	
2	Direction and distance of aerodrome reference point from the centre of the city or town which the aerodrome serves	180 DEG / 09KM from Kolhapur city	
3	Aerodrome elevation and reference temperature	1996 FT / 37DEG C	
4	Magnetic, date of information and annual change	1.25 DEG W(2010)/ 0.33 DEG (2010)	
5	Name of aerodrome operator, address, telephone, telefax, e-mail address, AFS address, website (if available)	Airports Authority of India, Kolhapur Airport, Ujalaiwadi, Kolhapur, Maharashtra (India), PIN-416004.	
		Tel	+91-231-2677352
		Fax:	+91-231-2677355

		AFS	VAKPYDYX
		Email	apdkolhapur@AAI.AERO
6	Types of traffic permitted (IFR/VFR)	VFR	
7	Remarks	NIL	

VAKP AD 2.3 OPERATIONAL HOURS

1	Aerodrome Operator	MON - FRI: 0400-1230 (0930-1800IST) SAT, SUN+ HOL : Nil	
2	Custom and immigration	NIL	
3	Health and sanitation	NIL	
4	AIS Briefing office	NIL	
5	ATS Reporting Office (ARO)	AS ATS	
6	MET Briefing office	AS ATS	
7	Air Traffic Service	Refer NOTAM for Current Watch Hours	
8	Fuelling	Not Available	
9	Handling	Nil	
10	Security	Maharashtra State Police/MSSC	
11	De-icing	Not Applicable	
12	Remarks	Nil	

VAKP AD 2.4 HANDLING SERVICES AND FACILITIES

1	Cargo-handling facilities	NIL	
2	Fuel and oil types	NIL	
3	Fuelling facilities and capacity	Available on prior coordination with oil companies	
4	De-icing facilities	NIL	
5	Hanger space for visiting aircraft	NIL	
6	Repair facilities for visiting aircraft	NIL	
7	Remarks	NIL	

VAKP AD 2.5 PASSENGER FACILITIES

1	Hotel(s) at or in the vicinity of aerodromes	In the city
2	Restaurant(s) at or in the vicinity of aerodromes	In the city
3	Transportation possibilities	In the city
4	Medical Facilities	First Aid at AD. Hospitals in city.
5	Bank and post office at or in the vicinity of aerodromes	Banks: In the city Post office: In the city
6	Tourist office	In the city
7	Remarks	NIL

VAKP AD 2.6 RESCUE AND FIRE FIGHTING SERVICES

1	Aerodrome category for fire fighting	During ATC Watch hour CAT-V
2	Rescue equipment	Available as per AES Category
3	Capability for removal of disabled aircraft	As per Disable Aircraft Removal Plan
4	Remarks	NIL

VAKP AD 2.7 SEASONAL AVAILABILITY CLEARING

1	Type(s) of clearing equipment	NIL
2	Clearance priorities	NIL
3	Remarks	NIL

VAKP AD 2.8 APRONS, TAXIWAYS AND CHECK LOCATIONS/POSITIONS DATA

1	Designation, surface and strength of aprons	Designation	Apron (82 M X 52.4M)
		Surface	Flexible payment. Bituminous Surface
		Strength	19/F/B/Y/T
2	Designation, width, surface and strength of taxiways	Designation	TWY A
		Width	25 M
		Surface	Bitumen
		Strength	13/F/B/Y/T

3	Location and elevation of altimeter checkpoints	Location	Aircraft Stands
		Elevation	2004 FT
4	Location of VOR checkpoints	NIL	
5	Position of INS checkpoints	NIL	
6	Remarks	NIL	

VAKP AD 2.9 SURFACE MOVEMENT GUIDANCE AND CONTROL SYSTEM AND MARKINGS

1	Use of aircraft stand identification signs, taxiway guidelines and visual docking/parking guidance system at aircraft stands	Aircraft stand ID markings. Apron Side Strip Markings and guidelines.		
2	Runway and taxiway markings and lights	RWY	Markings	Runway Designation, Threshold, Aiming Point, Touchdown zone, Centreline, turn pad & Edge.
			Lights	Threshold light, edge light & Runway end light
		TWY	Marking	Taxiway Center line, Edge, Taxi way-Runway Intersection & Taxiway / Runway Holding Position.
			Lights	Edge Lights
3	Stop bars (if any)	NIL		
4	Remarks	NIL		

VAKP AD 2.10 AERODORME OBSTACLES

RWY/Area affected	Obstacle type	Coordinates	Elevation (FT)	Marking/LGT	Remarks
1	2	3	4	5	6
APCH-07 TKOF-25	OTHER	163940.80054N 0741643.80750E	2022		Mobile Road Traffic (Road Elev 611.3M + Traffic 5.0M)
APCH-07 TKOF-25	OTHER	163936.81395N 0741651.36060E	2012		Mobile Road Traffic (Road Elev 608.4M + Traffic 5.0M)
APCH-07 TKOF-25	POLE	163934.62097N 0741605.62826E	2100		Electric Pole
APCH-07 TKOF-25	TREE	163933.03737N 0741603.50395E	2138		Group of Trees
APCH-07 TKOF-25	TREE	163928.43575N 0741602.55479E	2125		Group of Trees
APCH-07 TKOF-25	TREE	163933.34547N 0741605.18678E	2129		Group of Trees
APCH-07 TKOF-25	TREE	163931.43019N 0741607.03904E	2096		Group of Trees
APCH-07 TKOF-25	POLE	163934.78045N 0741559.98234E	2119		Electric Pole
APCH-07 TKOF-25	POLE	163936.87674N 0741559.92707E	2132		Electric Pole
APCH-07 TKOF-25	SIGN	163935.78742N 0741601.36327E	2118		Hoarding
APCH-07 TKOF-25	TREE	163934.48830N 0741604.42818E	2136		Group of Trees
APCH-07 TKOF-25	SIGN	163935.24447N 0741600.40775E	2114		Hoarding
APCH-07 TKOF-25	TREE	163932.04523N 0741552.04400E	2156		Group of Trees
APCH-07 TKOF-25	TREE	163928.69254N 0741546.99701E	2145		Sintex Tank on Building (Building Top 652.2M)
APCH-07 TKOF-25	BUILDING	163934.19675N 0741547.32733E	2136		Ground Level
APCH-07 TKOF-25	BUILDING	163915.35304N 0741540.67585E	2197		Mast on KIT Building
APCH-07 TKOF-25	BUILDING	163921.83961N 0741533.61294E	2160		Pipe Top on Building (Building Top 658.1M)

APCH-07 TKOF-25	POLE	163914.01858N 0741510.56740E	2197		OHWT
APCH-07 TKOF-25	FENCE	163947.91200N 0741648.78900E	2022		Wire Fencing
APCH-07 TKOF-25	MAST	163756.51100N 0741339.53500E	2552		Pylon Mast
APCH-07 TKOF-25	FENCE	163942.70300N 0741650.85600E	2018		Wire Fencing
APCH-07 TKOF-25	MAST	163747.14200N 0741321.52600E	2499		Pylon Mast without Wire
APCH-25 TKOF-07	FENCE	163958.35600N 0741743.55900E	1998		Fencing
In Circling Area & at AD	BUILDING	163940.90657N 0741554.61299E	2180		Sintex Tank on Building (Building Top 664.0M)
In Circling Area & at AD	POLE	163941.70286N 0741555.91334E	2156		Electric Pole
In Circling Area & at AD	BUILDING	163947.07048N 0741551.86101E	2160		Sintex Tank on Building (Building Top 658.0M)
In Circling Area & at AD	BUILDING	163938.87256N 0741552.13034E	2144		Ground Level
In Circling Area & at AD	BUILDING	163939.61156N 0741551.36109E	2150		Ground Level
In Circling Area & at AD	BUILDING	163937.96195N 0741549.40233E	2147		Ground Level
In Circling Area & at AD	BUILDING	163937.38033N 0741547.45539E	2154		Ground Level
In Circling Area & at AD	MAST	163836.09100N 0741715.15200E	2146		Chimney
In Circling Area & at AD	MAST	163825.53900N 0741657.92200E	2160		Mast
In Circling Area & at AD	MAST	163750.76500N 0741349.85000E	2551		Pylon Mast
In Circling Area & at AD	MAST	163653.65700N 0741303.21700E	2635		Pylon Mast
In Circling Area & at AD	MAST	163719.87300N 0741300.68800E	2552		Pylon Mast
In Circling Area & at AD	MAST	163717.35700N 0741336.98500E	2553		Mast
In Circling Area & at AD	MAST	163643.86700N 0741308.59500E	2681		Pylon Mast
In Circling Area & at AD	BUILDING	163952.65243N 0741711.94175E	2001		Ground Level

In Circling Area & at AD	BUILDING	163949.86579N 0741705.94375E	1996		Ground Level
In Circling Area & at AD	FENCE	163950.66548N 0741704.06037E	2006		Fencing
In Circling Area & at AD	POLE	163955.02150N 0741710.96653E	2018		Electric Pole
In Circling Area & at AD	MAST	163944.05451N 0741548.42226E	2224	LGT	Mast (L)
In Circling Area & at AD	MAST	163944.49808N 0741547.26567E	2209	LGT	Mast (L)
In Circling Area & at AD	BUILDING	163942.08174N 0741552.29462E	2191		Building
In Circling Area & at AD	POLE	163950.45658N 0741656.07164E	2029		WDI (L)
In Circling Area & at AD	POLE	163956.17684N 0741711.07611E	2018		Electric Pole
In Circling Area & at AD	POLE	163955.08789N 0741708.36605E	2013		Electric Pole
In Circling Area & at AD	POLE	163954.87795N 0741709.50943E	2017		Electric Pole
In Circling Area & at AD	POLE	163938.33586N 0741600.04334E	2119		Electric Pole
In Circling Area & at AD	BUILDING	163958.52826N 0741730.10347E	1993		Ground Level
In Circling Area & at AD	BUILDING	163957.24970N 0741726.66482E	1992		Ground Level
In Circling Area & at AD	TREE	164000.04893N 0741725.03403E	2016		Group of Trees
In Circling Area & at AD	TREE	164002.07342N 0741730.17235E	2018		Group of Trees
In Circling Area & at AD	MAST	163835.45878N 0741510.30275E	2192		Mast
In Circling Area & at AD	TREE	164751.23900N 0741426.47600E	2904		Tree on Hill
In Circling Area & at AD	MAST	163652.83500N 0741459.01300E	2494		Pylon Mast
In Circling Area & at AD	MAST	163702.14000N 0741448.52500 E	2524		Pylon Mast
In Circling Area & at AD	MAST	163736.26700N 0741410.12200E	2511		Pylon Mast
In Circling Area & at AD	MAST	163744.74800N 0741400.48800E	2511		Pylon Mast
In Circling Area & at AD	MAST	163638.15900N 0741319.35200E	2602		Pylon Mast

In Circling Area & at AD	MAST	163704.30900N 0741258.39900E	2557		Pylon Mast
In Circling Area & at AD	HILL	163739.53800N 0741557.29700E	2218		Hill Top
In Circling Area & at AD	HILL	164716.91600N 0741328.81800E	2552		Hill Top
In Circling Area & at AD	HILL	164708.99800N 0742027.96100E	2792		Hill Top

VAKP AD 2.11 METEOROLOGICAL INFORMATION PROVIDED

1	Name of the associated meteorological office	IMD Kolhapur
2	Hours of service and, where applicable, the designation of the responsible meteorological office outside these hours	As ATS
3	Office responsible for preparation of TAFs and periods of validity and interval of issuance of the forecasts	IMD Kolhapur
4	Availability of the trend forecast for the aerodrome and interval of issuance	NIL
5	Information on how briefing and/or consultation is provided	NIL
6	Types of flight documentation supplied and language(s) used in flight documentation	NIL
7	Charts and other information displayed or available for briefing or consultation	NIL
8	Supplementary equipment available for providing information on meteorological conditions, e.g. weather radar and receiver for satellite images;	NIL
9	The air traffic services unit(s) provided with meteorological information	NIL
10	Additional information, e.g. concerning any limitation of service.	NIL

VAKP AD 2.12 RUNWAY PHYSICAL CHARACTERISTICS

Designations	True BRG	Dimensions of RWY (M)	Strength of pavement (PCN) and associated data) and surface of runway and associated stop ways	Geographical coordinates for threshold and runway end
1	2	3	4	5
07	070.00 DEG	1370X45	26/F/B/Y/T BITUMINOUS	THR 163944.98N 0741657.21E RWY END 164000.50N 0741740.57E
25	250.00 DEG	1370X45	26/F/B/Y/T BITUMINOUS	THR 164000.50N 0741740.57E RWY END 163944.98N 0741657.21E
THR elevation and highest elevation of TDZ of precision APP RWY	Slope of runway and associated stop way	Dimensions of stop way (M)	Dimensions of clearway (M)	Dimensions of strips (M)
6	7	8	9	10
THR: 1996 FT TDZ: 1996 FT	+ 0.17%	NIL	180 X 150 M	1490 X 150
THR: 1988 FT TDZ: 1992 FT	0.17%	NIL	200 x 150M	1490 X 150
Dimensions of runway end safety areas	Location and description of arresting system (if any)	Existence of an obstacle-free zone	Remarks.	
11	12	13	14	
90 X 90	NIL	NIL	NIL	
90 X 90	NIL	NIL	NIL	

VAKP AD 2.13 DECLARED DISTANCES

RWY Designator	TORA (M)	TODA (M)	ASDA (M)	LDA (M)	Remarks (including runway entry or start point where alternative reduced declared distances have been declared)
1	2	3	4	5	6
09	1370	1550	1370	1370	NIL
27	1370	1570	1370	1370	NIL

VAKP AD 2.14 APPROACH AND RUNWAY LIGHTING

Runway Designator	Type, length and intensity of approach lighting system	Runway threshold lights, colour and wing bars	VASI (MEHT) PAPI	Length of runway touchdown zone lights
1	2	3	4	5
09	NIL	NIL	PAPI Left/ 3 DEG	NIL
27	NIL	NIL	PAPI Left/ 3 DEG	NIL
Length, spacing, colour and intensity of runway centre line lights	Length, spacing, colour and intensity of runway edge lights	Colour of runway end lights and wing bars	Length and colour of stop way lights	Remarks
6	7	8	9	10
NIL	1370 M 60 M WHITE LIH	RED	NIL	NIL
NIL	1370 M 60 M WHITE LIH	RED	NIL	NIL

VAKP AD 2.15 OTHER LIGHTING, SECONDARY POWER SUPPLY

1	Location, characteristics and hours of operation of aerodrome beacon/identification beacon (if any)	ABN	Flashing Green and White. 30 Flashes per Minute (15RPM).
		IBN	NIL
2	Location and lighting (if any) of anemometer/landing direction indicator;	LDI	Landing "T" Provided at 431 FT from edge of RWY 07 and Lighted.
		Anemometer	NIL
3	Taxiway edge and taxiway centre line lights;	Edge	Available
		Centre line	Not Available
4	Secondary power supply including switch-over time;	Available. Switchover time within 12 Seconds.	
5	Remarks	NIL	

VAKP AD 2.16 HELICOPTER LANDING AREA

1	Geographical coordinates of the geometric centre of touchdown and lift-off (TLOF) or of each threshold of final approach and take-off (FATO) area	Not Established
2	TLOF and/or FATO area elevation:	Not Established
3	TLOF and FATO area dimensions to the nearest metre or foot, surface type, bearing strength and marking;	Not Established
4	True bearings of FATO;	Not Established
5	Declared distances available,	Not Established
6	Approach and FATO lighting;	Not Established
7	Remarks	Not Established

VAKP AD 2.17 AIR TRAFFIC SERVICES AIRSPACE

1.	Airspace designation, geographical coordinates and lateral limits	Area bounded by 161453N 0741733E then along a clockwise arc of radius 25 NM centred at ARP of Kolhapur Aerodrome to 162130N 0743502E then along counter clock wise arc of radius 30 NM centred at ARP of Belgaum Aerodrome to point of origin.
2.	Vertical limits	FL 100
3.	Airspace classification	Class D
4.	Call sign and language(s) of the air traffic services unit providing service;	KOLHAPUR Tower English
5.	Transition altitude	5000FT AMSL
6.	Hours of applicability	As ATS
7.	Remarks	NIL

VAKP AD 2.18 AIR TRAFFIC SERVICES COMMUNICATION FACILITIES

Service Designation	Call sign	Channel(s)	SATVOICE Number(s), if available
1	2	3	4
TWR	KOLHAPUR TOWER	126.900 MHz	NIL
Logon address, as appropriate	Hours of operation	Remarks	
5	6	7	
NIL	As ATS	Functions of SMC, TWR and APP combined.	

VAKP AD 2.19 RADIO NAVIGATION AND LANDING AIDS

Type of aids, magnetic and type of supported operation for ILS/MLS, basic GNSS, SBAS and GBAS, and for VOR/ILS/MLS station used for technical line-up of the aid	Identification	Frequency(ies), Channel number(s), Service provider, and reference path identifier(s) (RPI), as appropriate	Hours of operation, as appropriate;
1	2	3	4
NDB	KP	334 KHz	As ATS
Geographical coordinates of the position of the transmitting antenna	Elevation of transmitting antenna of DME/ elevation of GBAS reference point	Service volume radius from the GBAS reference point	Remarks
5	6	7	8
163949.33N 0741636.35E		NIL	NIL

VAKP AD 2.20 LOCAL AERODROME REGULATIONS

1. Taxiing procedure: All the aircraft stands are power in/ power out, more precaution required during taxiing.
2. Wing Tip Marshaller mandatory to be available during movement of aircraft at apron & abeam apron.

VAKP AD 2.21 NOISE ABATEMENT PROCEDURES

NIL

VAKP AD 2.22 FLIGHT PROCEDURES

NIL

VAKP AD 2.23 ADDITIONAL INFORMATION

NIL

VAKP AD 2.24 CHARTS RELATED TO AN AERODROME

1. Aerodrome Chart
2. Aircraft Parking/Docking Chart
3. NDB Procedure RWY 25

CANCELLATION:

1. NOTAM C0788/18 of VABBYNYX
2. AIP Supplement 126/2018

AERODROME CHART

**16°39'58.94"N
74°17'25.73"E**

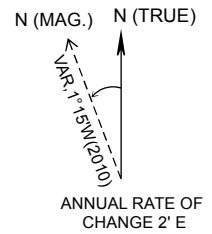
ELEV. 1996ft

TWR 126.9

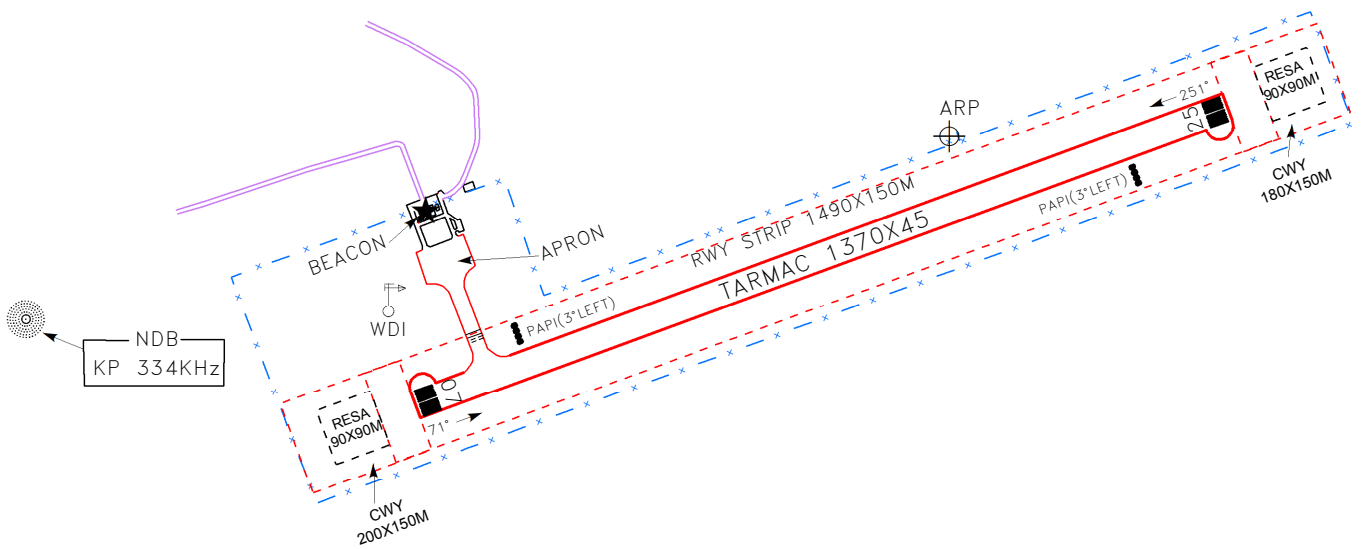
KOLHAPUR, INDIA

KOLHAPUR AIRPORT

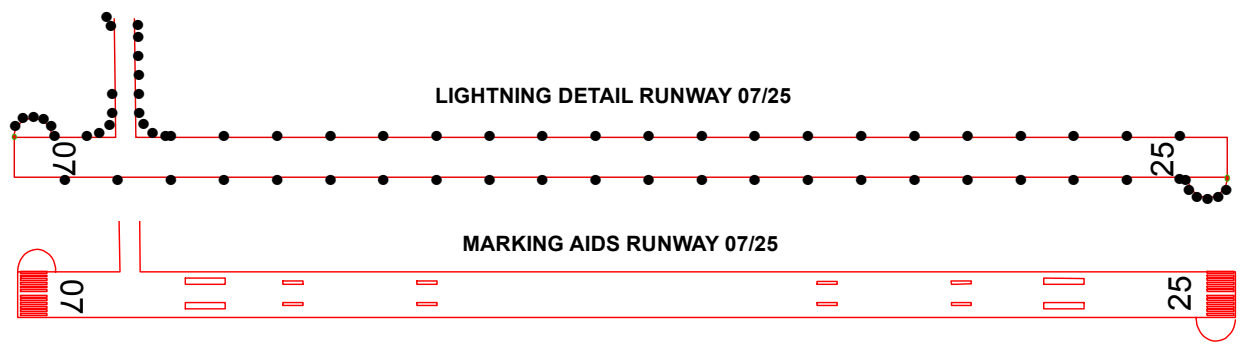
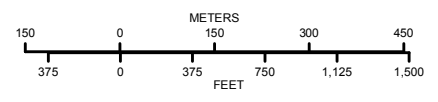
RWY	DIRECTION	THR CO-ORDINATES	THR. ELEV.	BEARING	STRENGTH
07	071°	16°39'44.98"N 074°16'57.21"E	1996	26/F/B/Y/T	
25	251°	16°40'00.50"N 074°17'40.57"E	1988	26/F/B/Y/T	



- DATUM : WGS-84.
- BEARINGS ARE MAGNETIC.
- ELEVATIONS IN FEET (AMSL).



NDB
KP 334KHz



DATE OF AERONAUTICAL INFORMATION
JANUARY 2020

AIRPORTS AUTHORITY OF INDIA

UPDATED AS ON 13.02.2020

**AIRCRAFT PARKING/
DOCKING CHART**

APRON ELEV.2004ft

TWR 126.9

KOLHAPUR, INDIA

KOLHAPUR AIRPORT

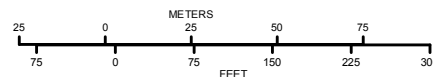
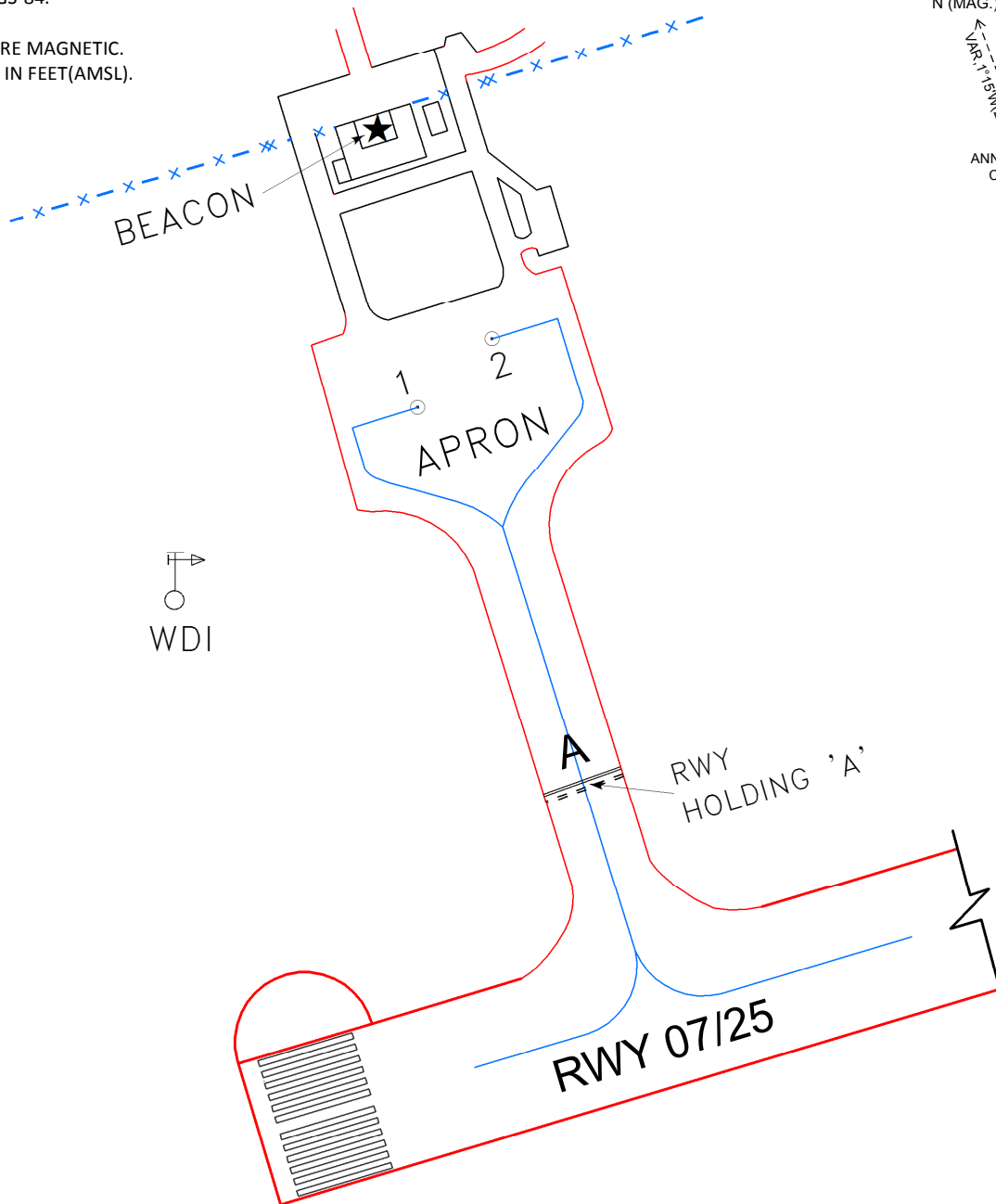
- DATUM : WGS-84.

- BEARINGS ARE MAGNETIC.
- ELEVATIONS IN FEET(AMSL).

N (MAG.) N (TRUE)



VAR. 13°W(2010)
ANNUAL RATE OF
CHANGE 2' E



LEGEND	
AIRCRAFT STAND	⊙ 2
RWY HOLDING POSITION	≡≡≡

STAND NO.	WGS-84 CO-ORDINATES FOR AIRCRAFT STAND	PCN	SUITABILITY OF AIRCRAFT	ELEV.
1	16° 39' 52.30434" N 74° 16' 58.35321" E	19/F/B/Y/T	ATR72	2004
2	16° 39' 53.03316" N 74° 16' 59.07497" E	19/F/B/Y/T	BEECHCRAFT 1900	2004

TWY	PCN	WIDTH	ELEV.
A	13/F/B/Y/T	25M	1997

DATE OF AERONAUTICAL INFORMATION
JANUARY 2020

AIRPORTS AUTHORITY OF INDIA

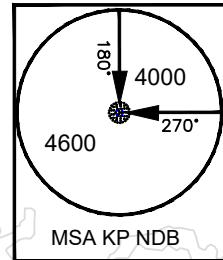
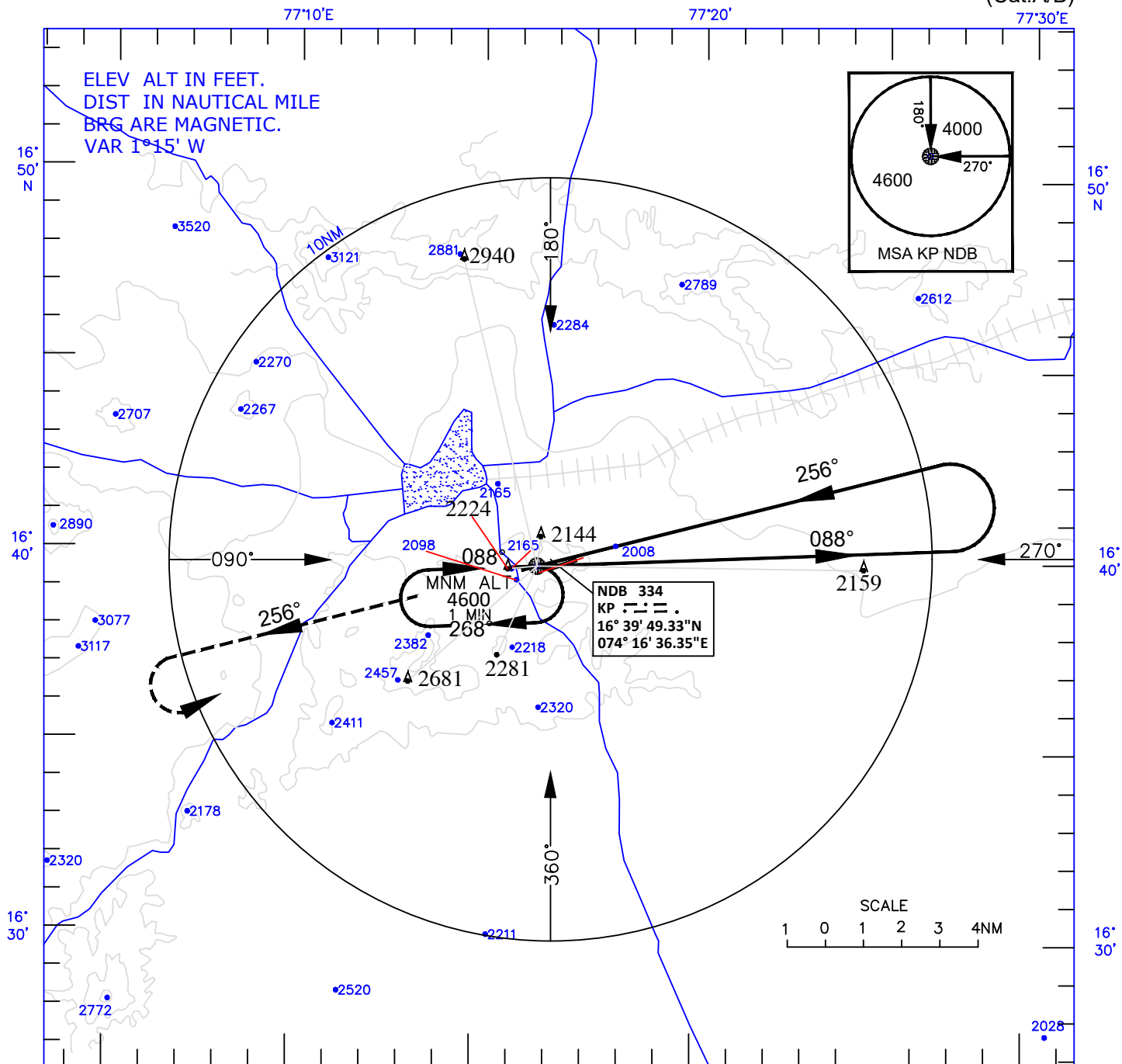
UPDATED AS ON 13.02.2020

INSTRUMENT APPROACH CHART

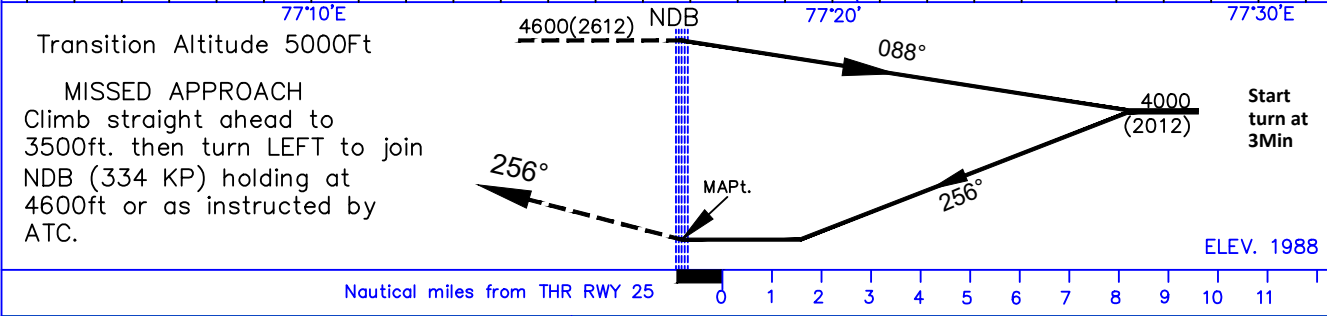
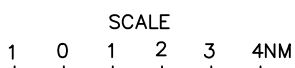
AERODROME ELEV 1996Ft
HEIGHT RELATED TO
THR RWY 25 ELEV 1988Ft

TWR 126.9

KOLHAPUR(VAKP)
INDIA
NDB RWY 25
(Cat.A/B)



NDB 334
KP --- · · ·
16° 39' 49.33"N
074° 16' 36.35"E



O C A (H)	
CATEGORY OF AIRCRAFT	A/B
STRAIGHT-IN	2470(482)
CIRCLING	2670(674)

DRG. NO. AAI/02-IALC/18/25.09.18