

TEL: +91-11-24632950 Extn: 2219/2233 AFS: VIDDYXAX FAX: +91-11-24615508 Email: gmais@aai.aero	INDIA AERONAUTICAL INFORMATION SERVICE AIRPORTS AUTHORITY OF INDIA RAJIV GANDHI BHAVAN SAFDARJUNG AIRPORT NEW DELHI – 110003	239/2024 16 OCT 2024
---	---	---

File No. ATM-19013(19)/1/2024-ATM

Following supplement is issued for information, guidance and necessary action.

sd/-
एम. सुरेश
M. SURESH
अध्यक्ष/CHAIRMAN
भारतीय विमानपत्तन प्राधिकरण
AIRPORTS AUTHORITY OF INDIA

[EFFECTIVE DATE: 28 NOV 2024]

AERODROME DATA
REWA AIRPORT, REWA (VERW)

AD 2. AERODROMES

VERW AD 2.1 AERODROME LOCATION INDICATOR AND NAME

VERW - REWA AIRPORT/ DOMESTIC

VERW AD 2.2 AERODROME GEOGRAPHICAL AND ADMINISTRATIVE DATA

1	Aerodrome reference point coordinates and its site	243013.49N 0811323.30E 304.82 DEG/292M from physical extremity of RWY 25
2	Direction and distance of aerodrome reference point from the centre of the city or town which the aerodrome serves	Airport is located 6.5 KM South-West of Rewa Junction Railway station.
3	Aerodrome elevation and reference temperature	1070 FT/ 40.7 DEG
4	Magnetic variation, date of information and annual change	0.3 DEG W/.0167 DEG E As per EPOCH Chart 2010.
5.	Name of aerodrome operator, address, telephone, telefax, e-mail address, AFS address, website (if available)	Airport Director Airports Authority of India Rewa Airport Rewa (Madhya Pradesh)
		Tel
		+91-7004521132

		FAX	Not Available
		Email	apdrewa@aai.aero
6	Types of traffic permitted (IFR/VFR)	IFR/VFR	
7	Remarks	Geoid Model: EGM-08	

VERW AD 2.3 OPERATIONAL HOURS

1	Aerodrome Operator	MON-FRI: 0400-1230 UTC (0930-1800 IST) SAT, SUN & HOL: NIL
2	Custom and immigration	Not Applicable
3	Health and sanitation	During AD Hours
4	AIS Briefing office	As ATS
5	ATS Reporting Office (ARO)	As ATS
6	MET Briefing office	As ATS
7	Air Traffic Service	As per NOTAM
8	Fuelling	As ATS
9	Handling	As ATS
10	Security	Provided by state police
11	De-icing	Not applicable
12	Remarks	NIL

VERW AD 2.4 HANDLING SERVICES AND FACILITIES

1	Cargo-handling facilities	No exclusive facilities. Cargo to be handled by the concerned operator
2	Fuel and oil types	ATF
3	Fuelling facilities and capacity	IOCL
4	De-icing facilities	NIL
5	Hanger space for visiting aircraft	NIL
6	Repair facilities for visiting aircraft	On Apron (On Request)
7	Remarks	NIL

VERW AD 2.5 PASSENGER FACILITIES

1	Hotel(s) at or in the vicinity of aerodromes	Available in city within 3Kms.	
2	Restaurant(s) at or in the vicinity of aerodromes	Available in city within 3Kms.	
3	Transportation possibilities	Hired Taxi	
4	Medical Facilities	First Aid in the terminal building and basic facilities at PHC Hospital located within 2 Kilometer. For serious & critical cases District Hospital located in Rewa City about 11kms from the airport.	
5	Bank and post office at or in the vicinity of aerodromes	Bank	Within 3KM from Rewa Airport
		Post office	Within 3KM from Rewa Airport
6	Tourist office	Available in city (M.P. Tourism)	
7	Remarks	NIL	

VERW AD 2.6 RESCUE AND FIRE FIGHTING SERVICES

1	Aerodrome category for fire fighting	Within ATS HR, CAT V	
2	Rescue equipment	Ambulance 01 CFT 01	
3	Capability for removal of disabled aircraft	<ol style="list-style-type: none"> 1. The critical aircraft for the airport is ATR72. 2. Primary responsibility for removal of disabled aircraft rests with the concerned airline. 3. The airlines may contact “Aerodrome Coordinator for Disabled Aircraft Removal Operations’ for coordinating with the agencies having Disabled Aircraft Recovery Kit. 4. Contact details of Aerodrome Coordinator for Disabled Aircraft Removal Operations: Airport Director, Rewa Airport Email: apdrewa@aai.aero Telephone: +91-7004521132 	
4	Remarks	NIL	

VERW AD 2.7 SEASONAL AVAILABILITY CLEARING

1	Type(s) of clearing equipment	NIL
2	Clearance priorities	NIL
3	Remarks	NIL

VERW AD 2.8 APRONS, TAXIWAYS AND CHECK LOCATIONS/POSITIONS DATA

1	Designation, surface and strength of aprons	Refer Aircraft Parking/Docking Chart
2	Designation, width, surface and strength of taxiways	Refer Aircraft Parking/Docking Chart
3	Location and elevation of altimeter checkpoints	On Apron, 1089.80 FT
4	Location of VOR checkpoints	At RWY Holding Position on TWY A
5	Position of INS checkpoints	Not Available
6	Remarks	<p>1. Coordinates and elevation of RWY-TWY Intersection:</p> <p>i. RWY & TWY A: 243015.87478 N 0811324.420E, ELEV: 1065 FT</p> <p>2. Vertical Datum: EGM 08</p>

VERW AD 2.9 SURFACE MOVEMENT GUIDANCE AND CONTROL SYSTEM AND MARKINGS

1	Use of aircraft stand identification signs, taxiway guidelines and visual docking/parking guidance system at aircraft stands	Taxing guidance signs at intersection with TWY and RWY and at holding position, Gridlines at apron. Taxiing guidance provided on R/T also.		
2	Runway and taxiway markings and lights	RWY	Markings	Designation, THR, TDZ, Aiming Point, Centre line, RWY Edge.
			Lights	THR light, RWY edge light, RWY End Light
		TWY	Marking	Centre line, Edge, Runway holding positions at TWY A.
			Lights	TWY edge light
3	Stop bars (if any)	NIL		
4	Remarks	NIL		

VERW AD 2.10 AERODROME OBSTACLES

RWY/AREA AFFECTED	OBSTACLE TYPE	CO-ORDINATES	ELEV. (FT) (EGM 08)	MARKING/ LGT	REMARKS
07/APCH 25/TKOF	TREE	242954.45N 0811232.72E	1119	-	Group of Trees
07/APCH 25/TKOF	BUILDING	242954.67N 0811231.06E	1095	-	Building
07/APCH 25/TKOF	OTHER	243003.69N 0811230.68E	1104	-	Sintex Tank on Building (Building Top = 335.5 M)
07/APCH 25/TKOF	POLE	242955.76N 0811228.32E	1093	-	Electric Pole
07/APCH 25/TKOF	POLE	242959.87N 0811227.95E	1091	-	Electric Pole
07/APCH 25/TKOF	BUILDING	243002.93N 0811227.21E	1100	-	Building
07/APCH 25/TKOF	STACK	242955.12N 0811154.35E	1174	-	Chimney at Sanchi Dairy (Building Top = 341.5 M)
07/APCH 25/TKOF	MAST	242946.94N 0811153.82E	1172	-	Thin Mast on Building (Building Top = 337.8 M)
07/APCH 25/TKOF	TREE	242952.81N 0811138.81E	1186	-	Group of Trees on Hump
07/APCH 25/TKOF	TREE	242957.68N 0811230.33E	1113	-	Tree
25/APCH 07/TKOF	TREE	243021.75N 0811400.52E	1106	-	Group of Trees
25/APCH 07/TKOF	BUILDING	243023.90N 0811404.15E	1118	-	Building U/C
25/APCH 07/TKOF	POLE	243029.69N 0811351.24E	1093	-	Electric Pole
25/APCH 07/TKOF	POLE	243027.90N 0811350.83E	1089	-	Electric Pole
25/APCH 07/TKOF	POLE	243020.74N 0811349.60E	1082	-	Electric Pole
25/APCH 07/TKOF	POLE	243019.16N 0811349.35E	1084	-	Electric Pole
In Circling Area and at AD	OTHER	243019.09N 0811327.86E	1088	-	L/C Rod on Fuel Room (Fuel Room Top = 330.8 M)
In Circling Area and at AD	TREE	243014.55N 0811311.81E	1098	-	Group of Trees
In Circling Area and at AD	TREE	243015.68N 0811315.30E	1120	-	Group of Trees
In Circling Area and at AD	TREE	243010.59N 0811315.53E	1096	-	Group of Trees
In Circling Area and at AD	TREE	243016.57N 0811318.12E	1120	-	Group of Trees
In Circling Area and at AD	POLE	243011.59N 0811318.55E	1083	-	Electric Pole
In Circling Area and at AD	TREE	243011.26N 0811320.14E	1109	-	Group of Trees
In Circling Area and at AD	TREE	243012.49N 0811320.93E	1114	-	Group of Trees
In Circling Area and at AD	TREE	243019.49N 0811321.31E	1128	-	Group of Trees
In Circling Area and at AD	TREE	243017.78N 0811321.39E	1126	-	Group of Trees

RWY/AREA AFFECTED	OBSTACLE TYPE	CO-ORDINATES	ELEV. (FT) (EGM 08)	MARKING/ LGT	REMARKS
In Circling Area and at AD	POLE	243017.52N 0811321.44E	1080	-	Light Pole
In Circling Area and at AD	BUILDING	243011.56N 0811321.61E	1070	-	Building
In Circling Area and at AD	BUILDING	243018.95N 0811322.18E	1081	-	Building
In Circling Area and at AD	POLE	243012.92N 0811322.64E	1084	-	Electric Pole
In Circling Area and at AD	OTHER	243017.45N 0811322.96E	1083	-	Hangar (Falcon Flying School)
In Circling Area and at AD	TREE	243018.44N 0811323.59E	1103	-	Group of Trees
In Circling Area and at AD	OTHER	243014.45N 0811323.78E	1073	-	WDI
In Circling Area and at AD	OTHER	243018.65N 0811324.19E	1075	-	Gate
In Circling Area and at AD	POLE	243018.65N 0811324.32E	1091	-	Light Pole
In Circling Area and at AD	POLE	243018.91N 0811324.36E	1087	-	Electric Pole
In Circling Area and at AD	SIGN	243015.22N 0811324.52E	1067	-	Sign Board
In Circling Area and at AD	ANTENNA	243014.20N 0811324.53E	1092	LGT	ATC Antenna (L)
In Circling Area and at AD	BUILDING	243014.32N 0811324.61E	1077	-	ATC Porta Cabin
In Circling Area and at AD	OTHER	243018.18N 0811324.67E	1090	-	L/C Rod on Guest Room (Guest Room Top = 330.3 M)
In Circling Area and at AD	POLE	243013.65N 0811324.94E	1084	-	Electric Pole
In Circling Area and at AD	TREE	243018.86N 0811325.10E	1128	-	Group of Trees
In Circling Area and at AD	SIGN	243016.94N 0811325.75E	1069	-	Sign Board
In Circling Area and at AD	TREE	243014.05N 0811326.28E	1094	-	Group of Trees
In Circling Area and at AD	TREE	242955.58N 0811251.24E	1135	-	Tree
In Circling Area and at AD	TREE	242952.58N 0811236.42E	1124	-	Tree
In Circling Area and at AD	POLE	243012.31N 0811328.71E	1083	-	Electric Pole
In Circling Area and at AD	TREE	243025.89N 0811329.99E	1126	-	Group of Trees
In Circling Area and at AD	POLE	243010.26N 0811322.16E	1080	-	Electric Pole
In Circling Area and at AD	TREE	243021.17N 0811323.76E	1108	-	Group Of Trees
In Circling Area and at AD	MAST	242949.76N 0811050.34E	1298	-	Cellphone Mast

VERW AD 2.11 METEOROLOGICAL INFORMATION PROVIDED

1	Name of the associated meteorological office	AMO, REWA
2	Hours of service and, where applicable, the designation of the responsible meteorological office outside these hours	As per ATS watch Hours
3	Office responsible for preparation of TAFs and periods of validity and interval of issuance of the forecasts	IMD, Bhopal. Interval 3 Hours
4	Availability of the trend forecast for the aerodrome and interval of issuance	Available When required
5	Information on how briefing and/or consultation is provided	Available on request
6	Types of flight documentation supplied and language(s) used in flight documentation	METAR, SPECI Language: English
7	Charts and other information displayed or available for briefing or consultation	Available on request
8	Supplementary equipment available for providing information on meteorological conditions, e.g. weather radar and receiver for satellite images;	Not available
9	The air traffic services unit(s) provided with meteorological information	Rewa TWR
10	Additional information, e.g. concerning any limitation of service.	NIL

VERW AD 2.12 RUNWAY PHYSICAL CHARACTERISTICS

Designations	True BRG	Dimensions of RWY (M)	Strength of pavement (PCN) and associated data and surface of runway and associated stop ways	Geographical coordinates for threshold and runway end
1	2	3	4	5
07	70.29 DEG	1800 x 30	32/F/C/W/T Asphalt	THR: 243001.15N 0811239.49E RWY END: 243020.88N 0811339.69E
25	250.29 DEG	1800 x 30	32/F/C/W/T Asphalt	THR: 243020.88N 0811339.69E RWY END: 243001.15N 0811239.49E

THR elevation and highest elevation of TDZ of precision APP RWY	Slope of runway and associated stop way	Dimensions of stop way (M)	Dimensions of clearway (M)	Dimensions of strips (M)
6	7	8	9	10
THR: 1070 FT TDZ: 1070 FT	-0.1%	NIL	NIL	1920 x 280
THR: 1068 FT TDZ: 1068 FT	0.1%	NIL	NIL	1920 x 280
Dimensions of runway end safety areas	Location and description of arresting system (if any)	Existence of an obstacle-free zone	Remarks.	
11	12	13	14	
90M X 60M	NA		i. Geoid Model: EGM-08 ii. PCN RWY 07: 0 - 345M: 19/F/C/W/T 346 - 1745M: 32/F/C/W/T 1746 - 1800M: 19/F/C/W/T	
90M X 60M	NA		i. Geoid Model: EGM-08 ii. PCN RWY 25: 0 - 54M: 19/F/C/W/T 55 - 1454M: 32/F/C/W/T 1455 - 1800M: 19/F/C/W/T	

VERW AD 2.13 DECLARED DISTANCES

RWY Designator	TORA (M)	TODA (M)	ASDA (M)	LDA (M)	Remarks (including runway entry or start point where alternative reduced declared distances have been declared)
1	2	3	4	5	6
07	1800	1800	1800	1800	NIL
25	1800	1800	1800	1800	NIL

VERW AD 2.14 APPROACH AND RUNWAY LIGHTING

Runway Designator	Type, length and intensity of approach lighting system	Runway threshold lights, colour and wing bars	Type of visual slope indicator system	Length of runway touchdown zone lights
1	2	3	4	5
07	SALS 210 M LIH	Green	PAPI LEFT/ 2.98 DEG	NA
25	SALS 210M LIH	Green	PAPI LEFT/ 3.01 DEG	NA

Length, spacing, colour and intensity of runway centre line lights	Length, spacing, colour and intensity of runway edge lights	Colour of runway end lights and wing bars	Length and colour of stop way lights	Remarks
6	7	8	9	10
NA	1800 M 60 M White LIH	Red	Nil	
NA	1800M 60M White LIH	Red	Nil	

VERW AD 2.15 OTHER LIGHTING, SECONDARY POWER SUPPLY

1	Location, characteristics and hours of operation of aerodrome beacon/identification beacon (if any)	ABN	At ATC Tower, FLG W&G EV 2SEC AVBL.
		IBN	NIL
2	Location and lighting (if any) of anemometer/landing direction indicator;	LDI	Available North of ATC
		Anemometer	Available. North of ATC, Lighted.
3	Taxiway edge and taxiway centre line lights;	Edge	Available
		Centre line	NA
4	Secondary power supply including switch-over time;	Sub-station I: 2 DG Set 500 KVA each. One working and one standby. Switch over time is less than 15 Seconds.	
5	Remarks	NIL	

VERW AD 2.16 HELICOPTER LANDING AREA

1	Geographical coordinates of the geometric centre of touchdown and lift-off (TLOF) or of each threshold of final approach and take-off (FATO) area	Not Established
2	TLOF and/or FATO area elevation:	Not Established
3	TLOF and FATO area dimensions to the nearest metre or foot, surface type, bearing strength and marking;	Not Established
4	True bearings of FATO;	Not Established
5	Declared distances available,	Not Established
6	Approach and FATO lighting;	Not Established
7	Remarks	NIL

VERW AD 2.17 AIR TRAFFIC SERVICES AIRSPACE

1.	Airspace designation, geographical coordinates and lateral limits	Circular area centered on 243013N 0811323E within a 10NM radius.
2.	Vertical limits	FL 65
3.	Airspace classification	Class D
4.	Call sign and language(s) of the air traffic services unit providing service;	Rewa TWR English
5.	Transition altitude	4000 FT
6.	Hours of applicability	HO
7.	Remarks	NIL

VERW AD 2.18 AIR TRAFFIC SERVICES COMMUNICATION FACILITIES

Service Designation	Call sign	Channel(s)	SATVOICE Number(s), if available
1	2	3	4
TWR/APP	Rewa Tower/ Rewa Approach	120.800 MHz	NIL
TWR/APP	Rewa Tower/ Rewa Approach	119.775 MHz	NIL
ALRS	EMERGENCY	121.500 MHz	NIL
Logon address, as appropriate	Hours of operation	Remarks	
5	6	7	
NIL	HO	i. Main Frequency ii. Functions of Approach Control combined with Aerodrome Control	
NIL	HO	i. Backup Frequency ii. Functions of Approach Control combined with Aerodrome Control	
NIL	HO		

VERW AD 2.19 RADIO NAVIGATION AND LANDING AIDS

Type of aids, magnetic and type of supported operation for ILS/MLS, basic GNSS, SBAS and GBAS, and for VOR/ILS/MLS station used for technical line-up of the aid	Identification	Frequency(ies), Channel number(s), Service provider, and reference path identifier(s) (RPI), as appropriate	Hours of operation, as appropriate;
1	2	3	4
DVOR	RWA	112.250 MHZ	HO
DME	RWA	CH 59Y	HO
Geographical coordinates of the position of the transmitting antenna	Elevation of transmitting antenna of DME/ elevation of GBAS reference point	Service volume radius from the GBAS reference point	Remarks
5	6	7	8
243014.360N 0811343.494E			
243014.654N 0811343.787E	1093.5 FT		i. Collocated with DVOR ii. Geoid Model: EGM-08

VERW AD 2.20 LOCAL AERODROME REGULATIONS

NIL

VERW AD 2.21 NOISE ABATEMENT PROCEDURES

NIL

VERW AD 2.22 FLIGHT PROCEDURES

NIL

VERW AD 2.23 ADDITIONAL INFORMATION

NIL

VERW AD 2.24 CHARTS RELATED TO AN AERODROME

1. Aerodrome Chart
2. Aircraft Parking/Docking Chart
3. Aerodrome Obstacle Chart - Type A (Operating Limitations) RWY 07
4. Aerodrome Obstacle Chart - Type A (Operating Limitations) RWY 25
5. Aerodrome Obstacle Chart - Type B
6. Instrument Approach Chart – VOR RWY 07
7. Instrument Approach Chart – VOR RWY 07

VERW AD 2.25 VISUAL SEGMENT SURFACE (VSS) PENETRATION

Procedure	Procedure Minima	Procedure Minima
1	2	3
---	---	---

AMENDMENTS/CANCELLATIONS:

1. NOTAM G0668/24, VIDPYNXX

AERODROME CHART

24°30'13.49"N
081°13'23.30"E

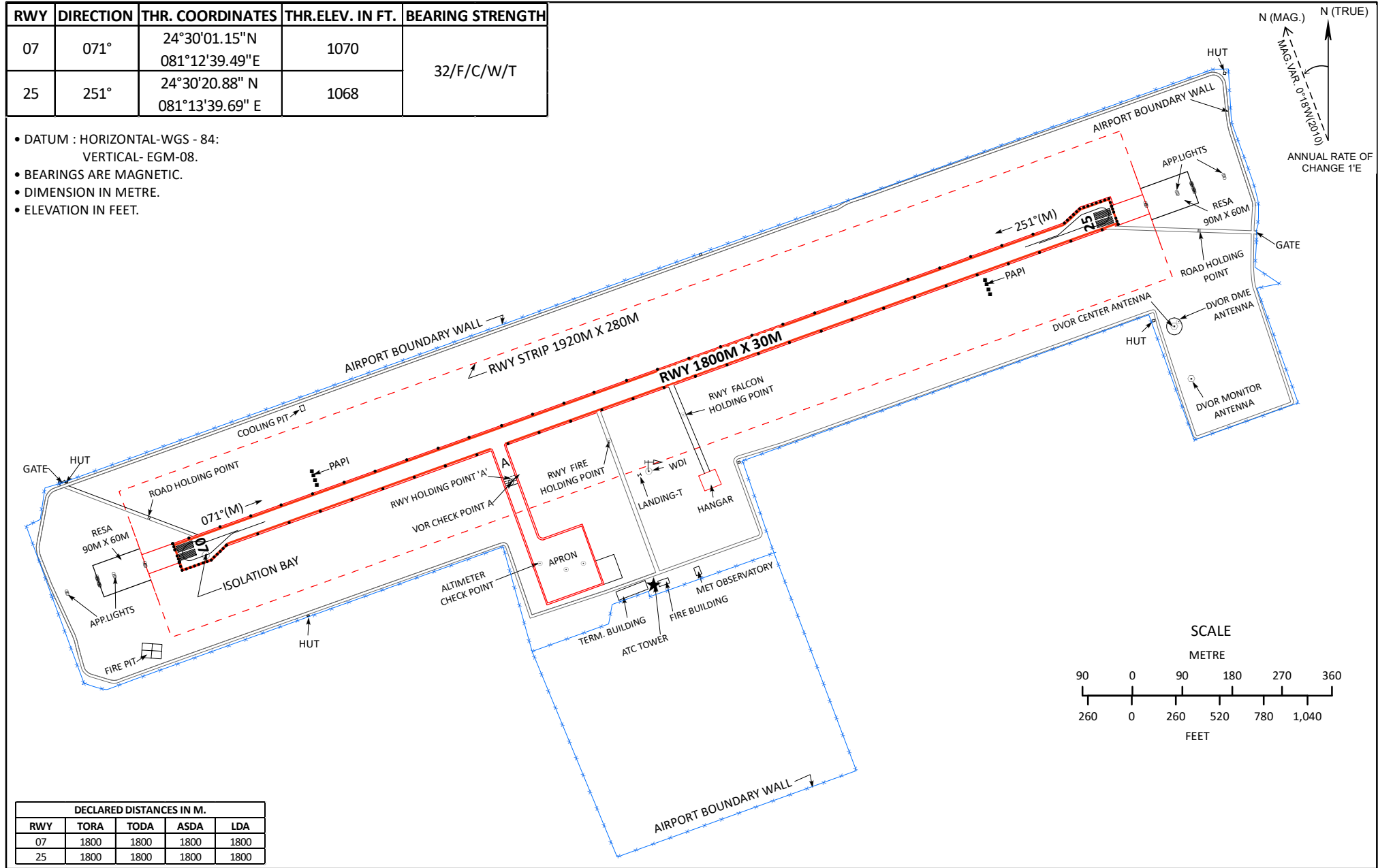
AD.ELEV.1070ft.

TWR 120.8
STD BY 119.775

REWA, INDIA
REWA AIRPORT

RWY	DIRECTION	THR. COORDINATES	THR.ELEV. IN FT.	BEARING STRENGTH
07	071°	24°30'01.15"N 081°12'39.49"E	1070	32/F/C/W/T
25	251°	24°30'20.88" N 081°13'39.69" E	1068	

- DATUM : HORIZONTAL-WGS - 84:
VERTICAL- EGM-08.
- BEARINGS ARE MAGNETIC.
- DIMENSION IN METRE.
- ELEVATION IN FEET.



DECLARED DISTANCES IN M.				
RWY	TORA	TODA	ASDA	LDA
07	1800	1800	1800	1800
25	1800	1800	1800	1800

DATE OF AERONAUTICAL INFORMATION
APRIL 2024

DRG.NO.AAI - 31/AC/2023(CARTO)

(UPDATED ON 14.10.2024)

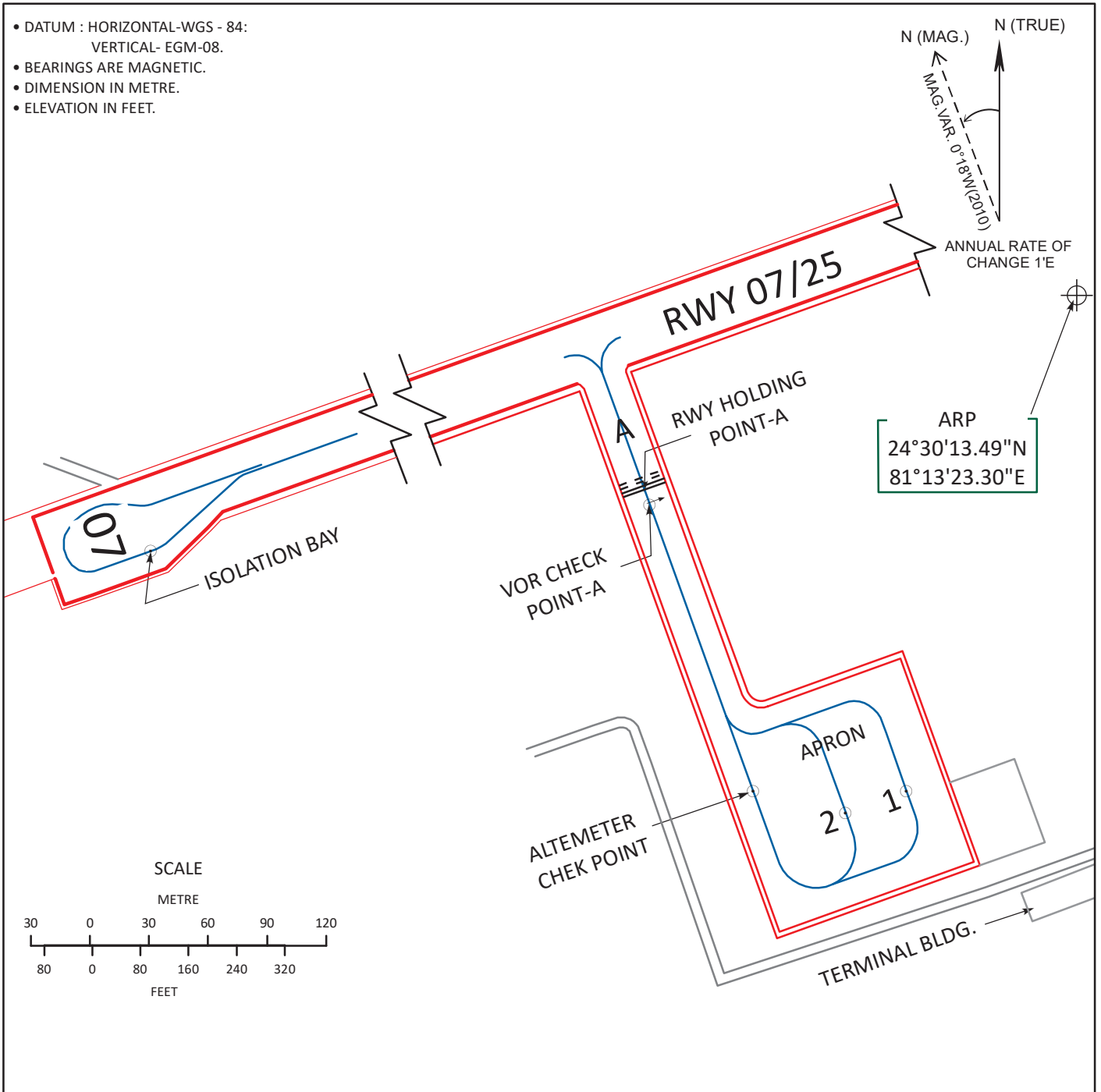
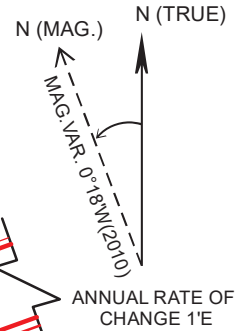
**AIRCRAFT PARKING/
DOCKING CHART**

APRON ELEV. 1057ft.

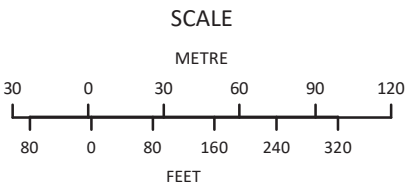
TWR MAIN 120.8
STD.BY 119.775

**REWA, INDIA
REWA AIRPORT**

- DATUM : HORIZONTAL-WGS - 84:
VERTICAL- EGM-08.
- BEARINGS ARE MAGNETIC.
- DIMENSION IN METRE.
- ELEVATION IN FEET.



ARP
24°30'13.49"N
81°13'23.30"E



LEGEND	
VOR CHECK POINT	
AIRCRAFT STAND PB-02	
TAXI-HOLDING POSITION	

PARKING BAY DETAILS					
BAY NO.	WGS CO-ORDINATES FOR AIRCRAFT STAND	ELEV. IN FEET	SUITABILITY	PCN	STATUS
1	24° 30' 0.503" N 81° 13' 5.578" E	1057	ATR 72	19/F/C/W/T	POWER IN/POWER OUT
2	24° 30' 0.142" N 81° 13' 4.477" E	1057	ATR 72	19/F/C/W/T	POWER IN/POWER OUT
ISOLATION BAY	24° 30' 01.027" N 81° 12' 41.381" E	1068	ATR 72	-	POWER IN/POWER OUT

TAXIWAY DETAIL		
TAXIWAY	PCN	WIDTH
A	19/F/C/W/T	23M

DATE OF AERONAUTICAL INFORMATION
DECEMBER 2023

DRG.NO.AAI - 09/PDC/2024(CARTO)

(UPDATED ON 10.06.2024)

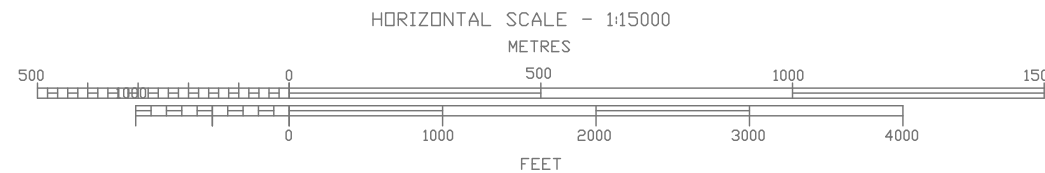
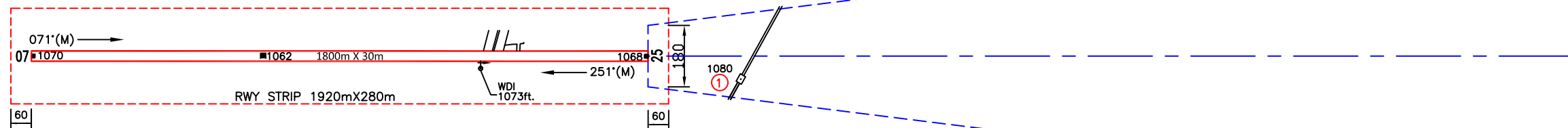
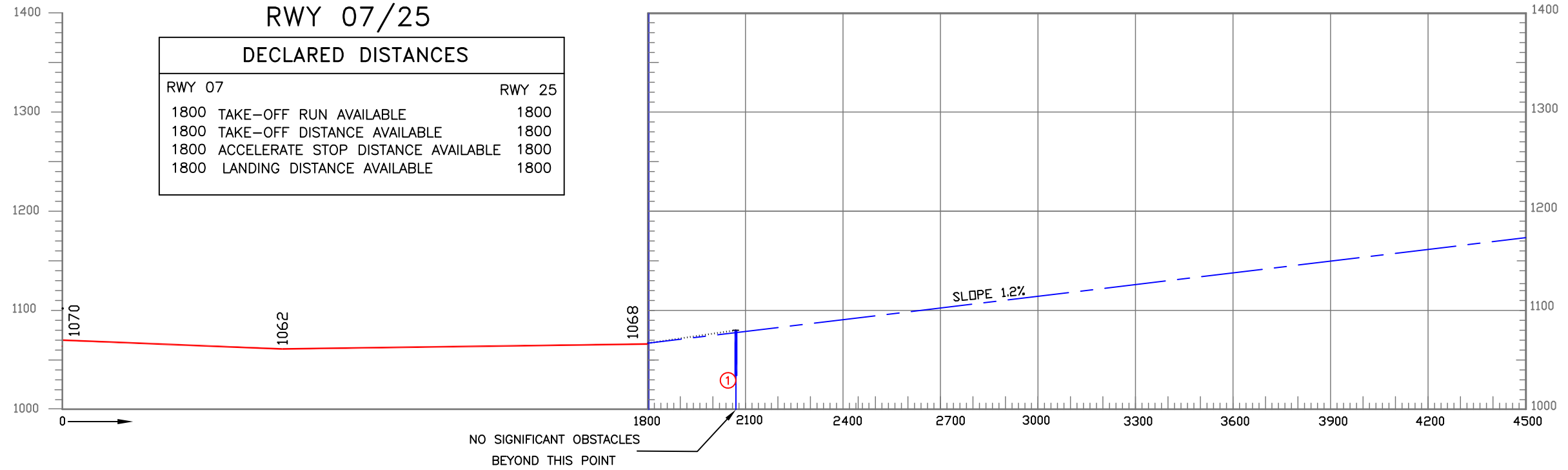
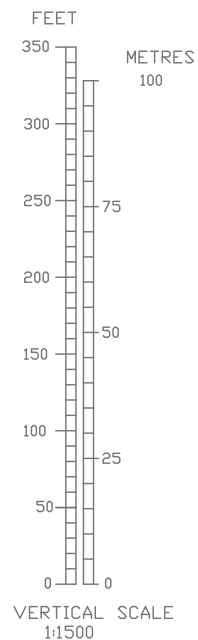
ELEVATIONS IN FEET AND EGM-08
ALL OTHER DIMENSIONS IN METRES

AERODROME OBSTACLE CHART

TYPE-A (OPERATING LIMITATIONS)

INDIA/REWA
REWA AIRPORT/RWY 07

MAGNETIC VARIATION 0°(2010)



LEGEND	
PLAN	PROFILE
IDENTIFICATION NUMBER	①
MOBILE ROAD TRAFFIC	
RWY ELEV.(SPOT)	■1062

ORDER OF ACCURACY
HORIZONTAL - 3.0m
VERTICAL - 1ft.

APP-25			
S.No.	UID	OBJECT	ELEV.Ft.
1	VA1G_8012	MOBILE ROAD TRAFFIC	1080

NOTES:-

- The objects that have been shielded due to presence of other higher objects have not been shown in this chart.
- Datum - All Elevations are in EGM-08.
- Periphery road without traffic is no obstacle.
- Consult Notam for latest information.
- Rwy directions rounded to nearest degree.(Magnetic)
(In degree minute : Rwy 07/25 = 070°35'/250°35')(2010)
(In degree minute : Rwy 07/25 = 070°23'/250°23')(2022)
- Magnetic variation rounded to nearest degree 0°18'W,
Annual rate of change 01'E(2010).
- All obstacles shown in this chart are based on aeronautical obstacle Survey DEC.-2022.
- Chart prepared based on DGCA CAR Section 9AS & ATM series 'G' Part-1.

AMENDMENT RECORD		
No	Date	DESCRIPTION
1	08.05.24	Amend. as per APD mail dt 06.05.2024

AERONAUTICAL INFORMATION UPTO DEC. 2023
वैमानिक सूचना दिसंबर 2023 तक

COMPILED BY- CARTO, AIRPORTS AUTHORITY OF INDIA
संग्रहित किया : कार्टो, भारतीय विमानपत्तन प्राधिकरण

(UPDATED AS ON 13.05.2024)

CHART No.AAI/03-OBS/CARTO/2024
चार्ट सं. भा.वि.प्रा./03-अव/कार्टो/2024

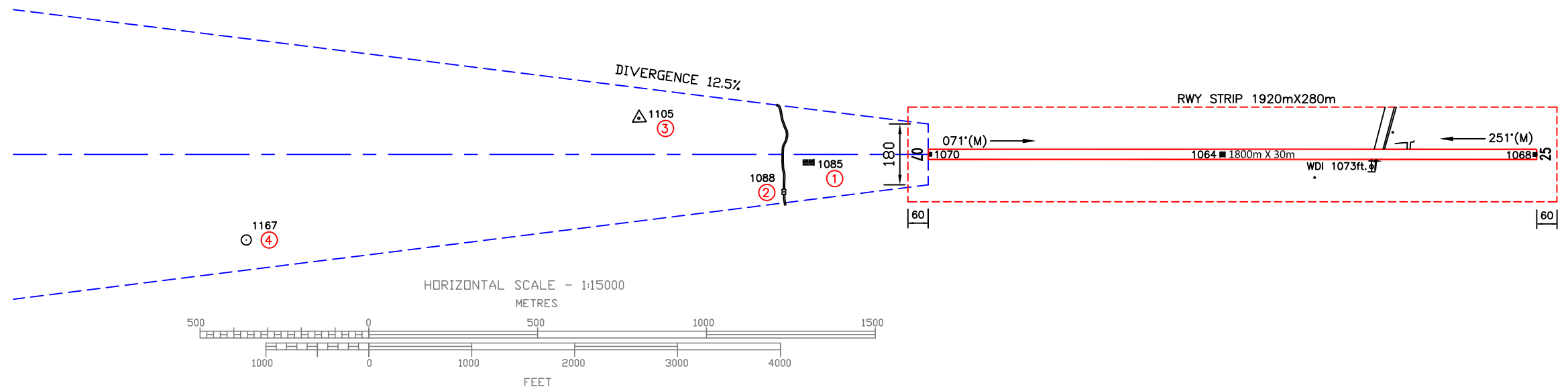
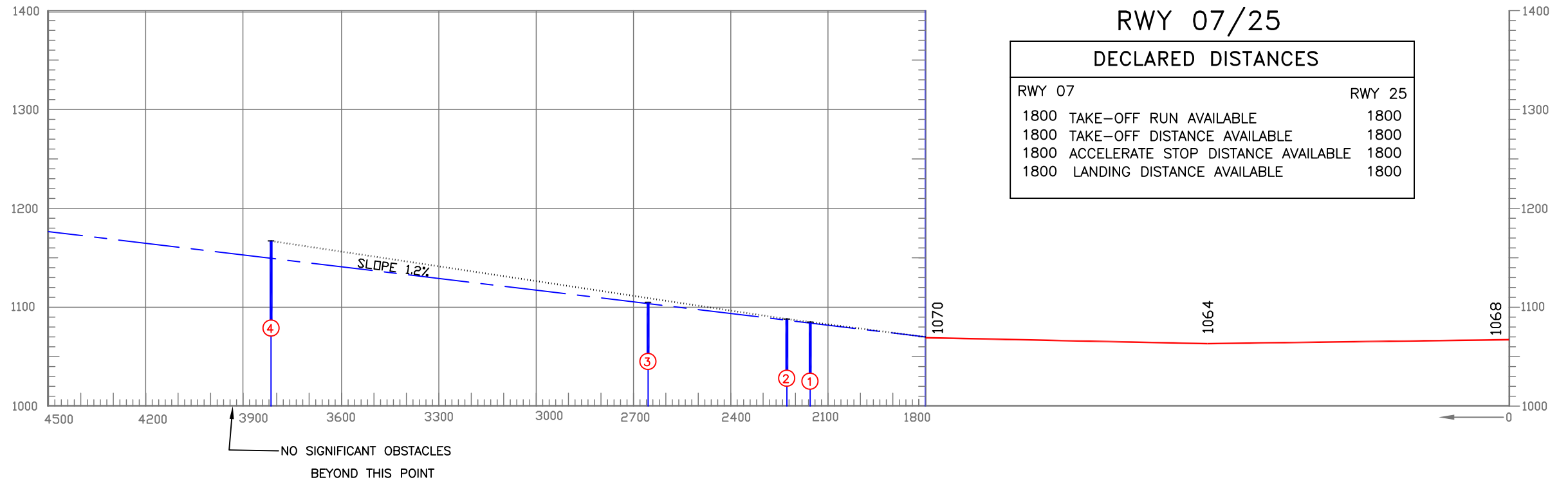
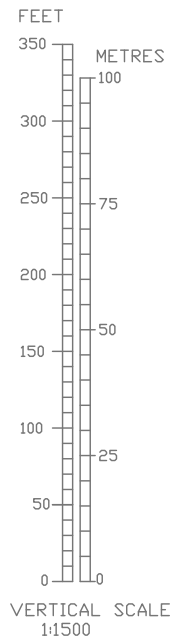
ELEVATIONS IN FEET AND EGM-08
ALL OTHER DIMENSIONS IN METRES

AERODROME OBSTACLE CHART

TYPE-A (OPERATING LIMITATIONS)

INDIA/REWA
REWA AIRPORT/RWY 25

MAGNETIC VARIATION 0°,(2010)



LEGEND

	PLAN	PROFILE
IDENTIFICATION NUMBER	①	①
MOBILE ROAD TRAFFIC	—	
RWY ELEV.(SPOT)	■1062	
BUILDING OR LARGE STRUCTURE	■	
HOARDING	△	

ORDER OF ACCURACY
HORIZONTAL - 3.0m
VERTICAL - 1ft.

RWY-07			
S. No.	UUID	OBJECT	ELEV.
1	VA1G_5043	BUILDING	1085
2	VA1G_8013	MOBILE ROAD TRAFFIC	1088
3	VA1G_9039	ROAD HOARDING	1105
4	VA1G_5051	O.H.W.T.	1167

NOTES:-

1. The objects that have been shielded due to presence of other higher objects have not been shown in this chart.
2. Datum - All Elevations are in EGM-08.
3. Periphery road without traffic is no obstacle.
4. Consult Notam for latest information.
5. Rwy directions rounded to nearest degree.(Magnetic)
(In degree minute : Rwy 07/25 = 070°35'/250°35')(2010)
(In degree minute : Rwy 07/25 = 070°23'/250°23')(2022)
6. Magnetic variation rounded to nearest degree 0°18'W, Annual rate of change 01'E(2010).
7. All obstacles shown in this chart are based on aeronautical obstacle Survey DEC.-2022.
8. Chart prepared based on DGCA CAR Section 9AS & ATM series 'G' Part-1.

AMENDMENT RECORD

No	Date	DESCRIPTION
01.	27.02.24	Amended as per strn. mail dt. 14.02.2024
02	29.02.24	Amended as per APD mail dt. 28.02.2024
03	08.05.24	Amend. as per APD mail dt 06.05.2024

AERONAUTICAL INFORMATION UPTO DEC. 2023
वैमानिक सूचना दिसंबर 2023 तक

COMPILED BY- CARTO, AIRPORTS AUTHORITY OF INDIA
संग्रहित किया : कार्टो, भारतीय विमानपत्तन प्राधिकरण

(UPDATED AS ON 14.05.2024)

CHART No.AAI/04-OBS/CARTO/2024
चार्ट सं. भा.वि.प्रा./04-अव/कार्टो/2024

AERODROME ELEVATION 1070FT.

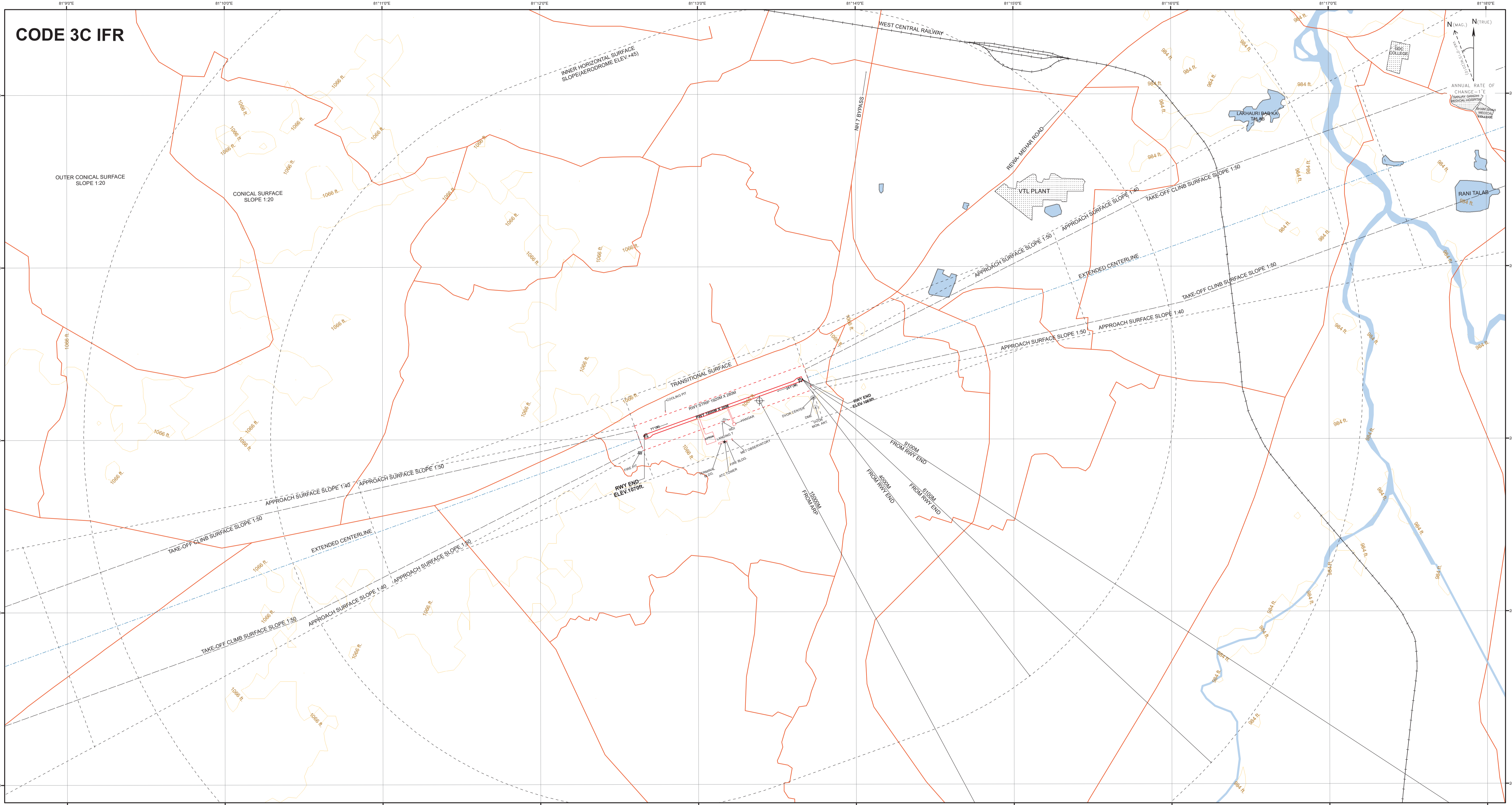
DISTANCE IN METRE.
ELEVATION IN FEET(EGM-08).
GRID LINES AND CO-ORDINATES SHOWN ARE BASED ON WGS-84 DATUM.
UTM ZONE-44N

AERODROME OBSTACLE CHART

REWA,INDIA REWA AIRPORT

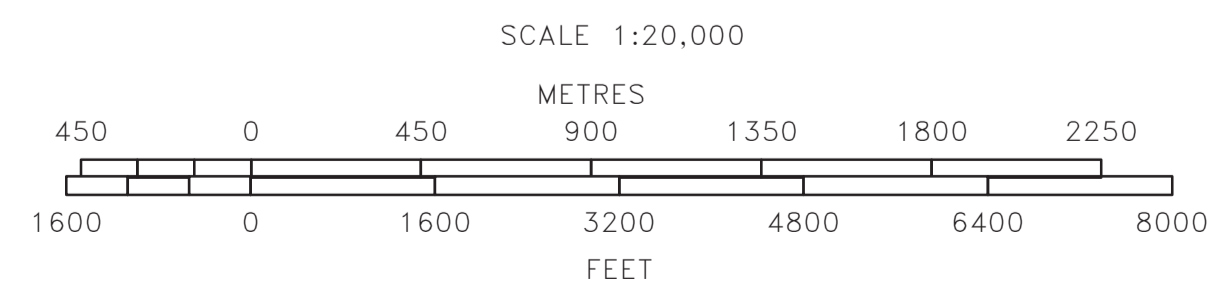
TYPE - B

CODE 3C IFR



LEGEND	
AERODROME REFERENCE POINT 24°30'13.48591"N 081°13'23.30307"E	
RIVER	
RAILWAY TRACK	
ROADS	
CONTOURS	
WATERBODIES	
BUILD-UP AREA	

ORDER OF ACCURACY	
TAKE-OFF AND APPROACH AREAS	
HORIZONTAL	REMARK
5M	AT POINT OF ORIGIN INCREASING AT A RATE OF 1 PER 500.
VERTICAL	REMARK
0.5M	IN THE FIRST 300M AND INCREASING AT A RATE OF 1 PER 1000.
OTHER AREAS	
HORIZONTAL	REMARK
5M	WITHIN 5000M OF THE ARP AND 12M BEYOND THAT AREA.
VERTICAL	REMARK
1M	WITHIN 1500M OF THE ARP INCREASING AT A RATE OF 1 PER 1000.



NOTE :

- 1.OBSTACLES SHOWN ARE THOSE WHICH PENETRATE THE SURFACES SPECIFIED IN ANNEX 14, VOL-1, CHAPTER-4 & GSR.
- 2.PROPTORA FOR RWY 07 IS 1800M.
- 3.TO BRING OUT THE CLARITY IN THE OBSTACLES DEPICTED IN THE APPROACH AND TAKE-OFF SURFACE, ONLY HIGHER OBSTACLES HAVE BEEN SHOWN FROM GROUP OF OBSTACLES.
- 4.ALL OBSTACLES ARE SHOWN IN THE CHART BASED ON AERONAUTICAL SURVEY DECEMBER 2022.
- 5.TOPOGRAPHIC FEATURES SOURCE- WORLD TOPO MAP, ESRI.

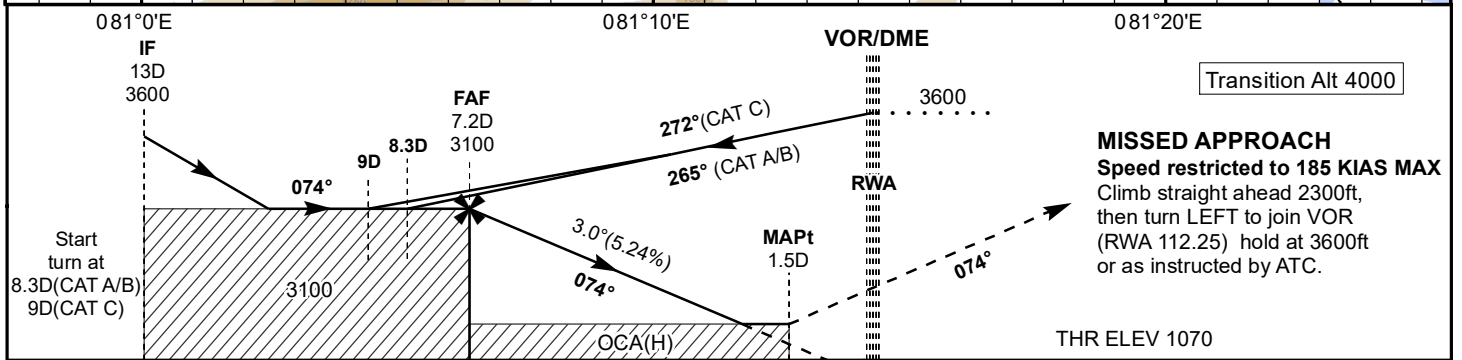
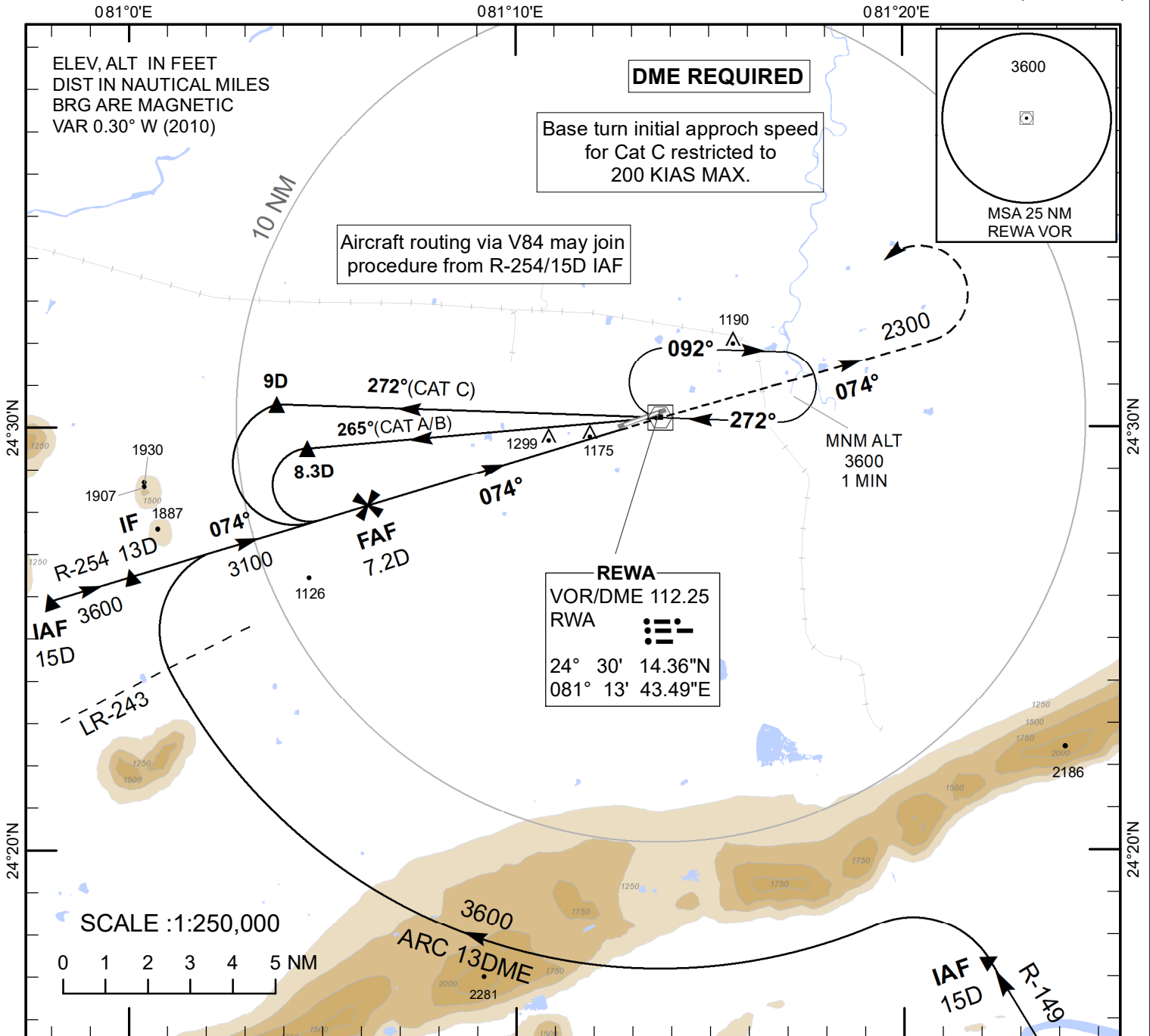
AMENDMENT RECORD		
NO.	DATE	ENTERED BY
1.	15-02-24	OBST. REMOVED AS PER STN. MAIL DATED AS ON 14-02-2024.
2.	28-02-24	OBST.S.No.23,24,26 REMOVED AS PER STN. MAIL DATED AS ON 26-02-2024.
3.	07-05-24	CHART AMENDED AS PER STN. MAIL DATED AS ON 07-05-24
4.	11-06-24	CHART AMENDED AS PER STN. MAIL DATED AS ON 08-06-24

**INSTRUMENT
APPROACH
CHART**

AERODROME ELEV 1070 Ft
HEIGHTS RELATED TO
THR RWY 07 - ELEV 1070 Ft

TWR 120.800
APP 119.775

REWA(VERW)
INDIA
VOR RWY 07
(CAT A/B/C)



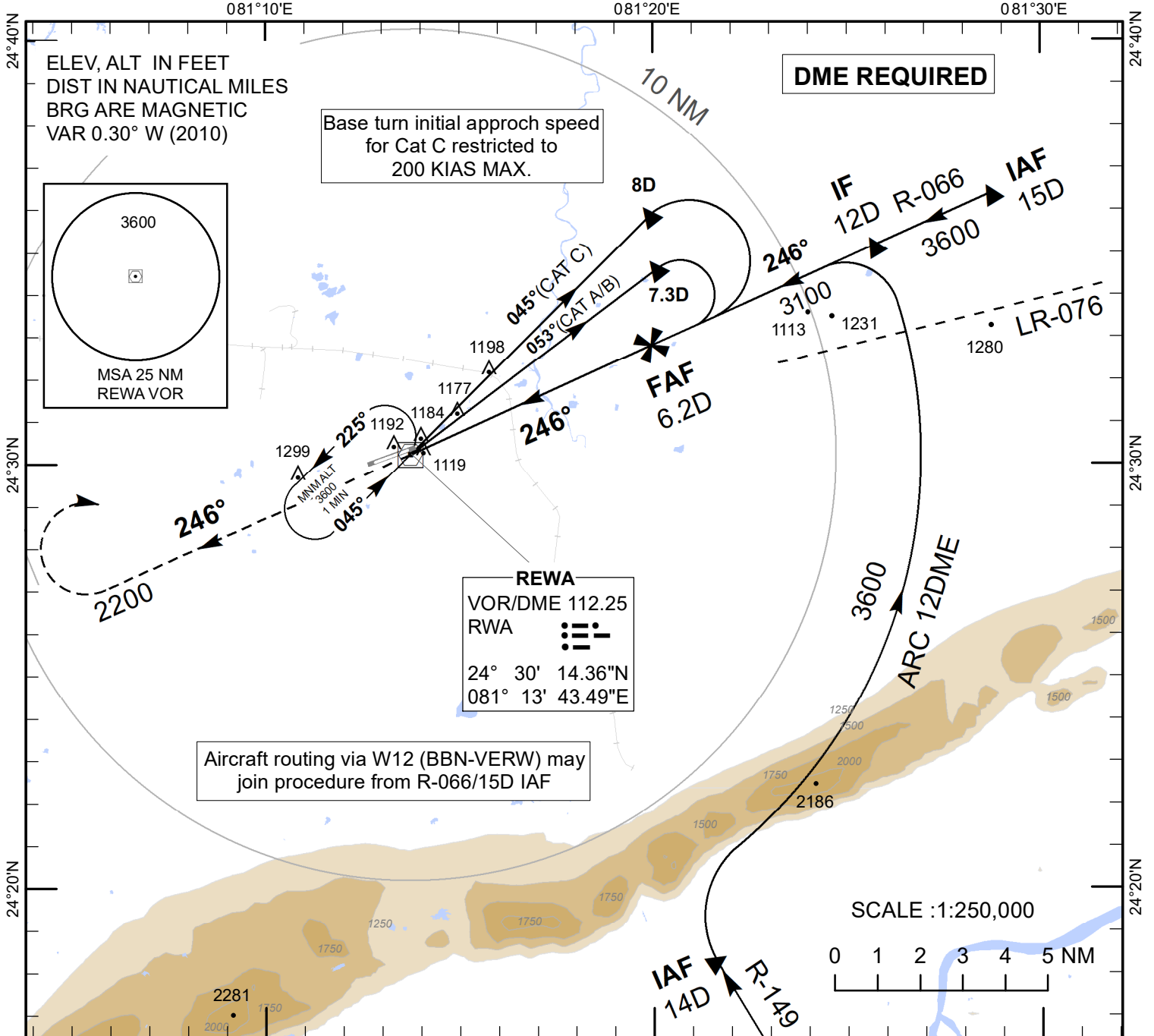
OCA(H)	A/B	C	Distance/ Altitude Information						
			Distance (DME-RWA) NM	7.2D(FAF) Ft	7D	6D	5D	4D	3D
1550(480)				3100	3040	2720	2400	2080	1760
			Ground speed / Rate of Descent Information						
			Ground Speed	Kt.	80	100	120	140	160
			Rate of Descent (5.24%)	Ft/Min	425	530	635	745	850

**INSTRUMENT
APPROACH
CHART**

AERODROME ELEV 1070 Ft
HEIGHTS RELATED TO
THR RWY 25 - ELEV 1068 Ft

TWR 120.800
APP 119.775

REWA(VERW)
INDIA
VOR RWY 25
(CAT A/B/C)



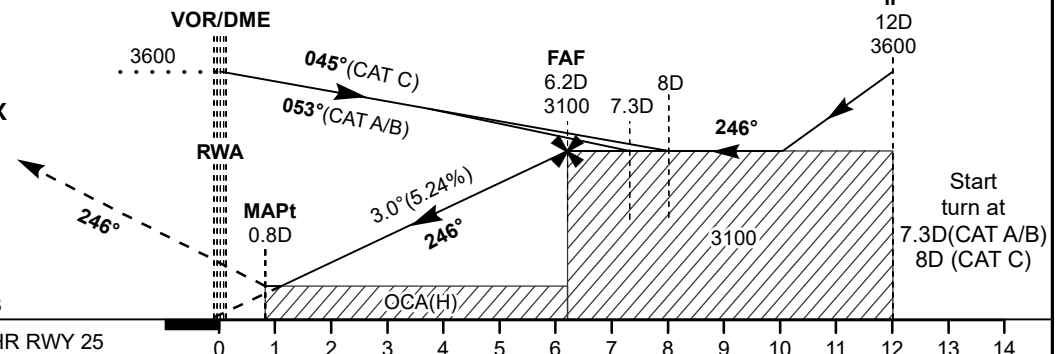
Transition Alt 4000

MISSED APPROACH
Speed restricted to 185 KIAS MAX

Climb straight ahead 2200ft,
then turn RIGHT to join VOR
(RWA 112.25) hold at 3600ft
or as instructed by ATC.

THR ELEV 1068

NAUTICAL MILES FROM THR RWY 25



				Distance/Altitude Information							
OCA(H)	A	B	C	Distance (DME-RWA)	NM	6.2D (FAF)	6D	5D	4D	3D	2D
STRAIGHT-IN	1470(400)			Altitude	Ft	3100	3040	2720	2400	2080	1770
				Ground speed / Rate of Descent Information							
Ground Speed				Kt.	80	100	120	140	160		
Rate of Descent (5.24%)				Ft/Min	425	530	635	745	850		