

TEL: +91-11-24632950 Extn: 2219/2233 AFS: VIDDYXAX FAX: +91-11-24615508 Email: <a href="mailto:gmais@aai.aero">gmais@aai.aero</a>	<b>INDIA</b> <b>AERONAUTICAL INFORMATION SERVICE</b> <b>AIRPORTS AUTHORITY OF INDIA</b> <b>RAJIV GANDHI BHAVAN</b> <b>SAFDARJUNG AIRPORT</b> <b>NEW DELHI – 110003</b>	<b>306/2024</b>
		<b>20 DEC 2024</b>

File No. ATM-19013(19)/1/2024-ATM

Following supplement is issued for information, guidance and necessary action.

sd/-

विपिन कुमार

VIPIN KUMAR

अध्यक्ष/CHAIRMAN

भारतीय विमानपत्तन प्राधिकरण

AIRPORTS AUTHORITY OF INDIA

[EFFECTIVE DATE: 20 FEB 2025]

**INSTRUMENT APPROACH CHART – ILS OR LOC RWY 24**  
**SWAMI VIVEKANANDA AIRPORT, RAIPUR (VERP)**

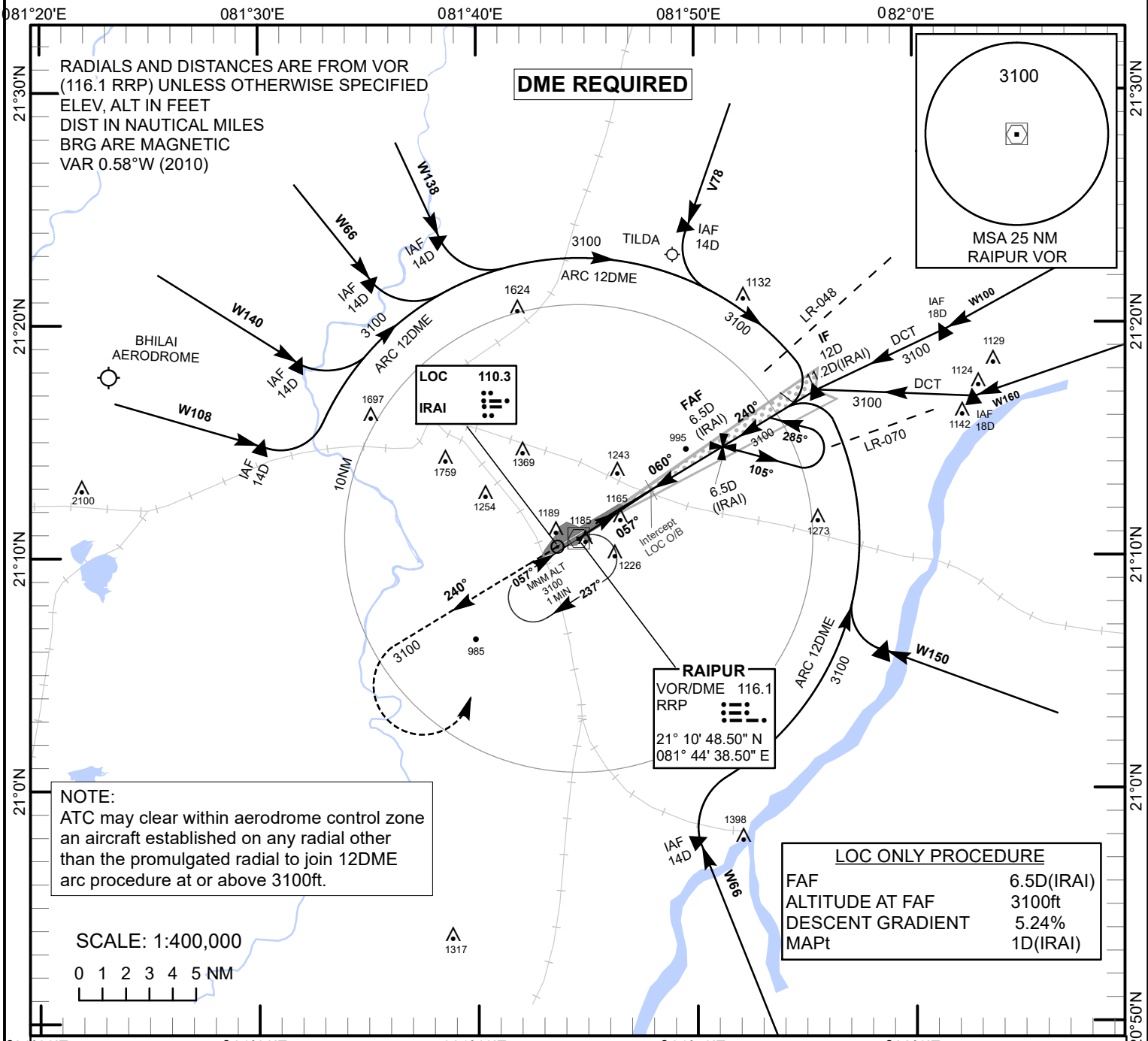
1. Following Instrument Approach Chart is issued for Swami Vivekananda Airport, Raipur:
  - i. Instrument Approach Chart – ILS OR LOC RWY 24
2. **AMENDMENT/CANCELATION:**
  - i. **Insert** Instrument Approach Chart – ILS OR LOC RWY 24 of this AIP Supplement in VERP AD 2.24 of eAIP India and amend list of charts accordingly.
  - ii. **Cancel** Instrument Approach Chart – ILS RWY 24 on page AD 2 VERP 2-101, dated 19 May 2022 in eAIP India and amend list of charts accordingly.
  - iii. **Cancel** NOTAM G1304/24, VIDPYNXX.

**INSTRUMENT  
APPROACH  
CHART**

**AERODROME ELEV 1044 ft**  
HEIGHTS RELATED TO  
THR RWY 24 - ELEV 1031 FT

**TWR 124.750/124.300**

**RAIPUR (VERP)**  
INDIA  
**ILS OR LOC RWY 24**

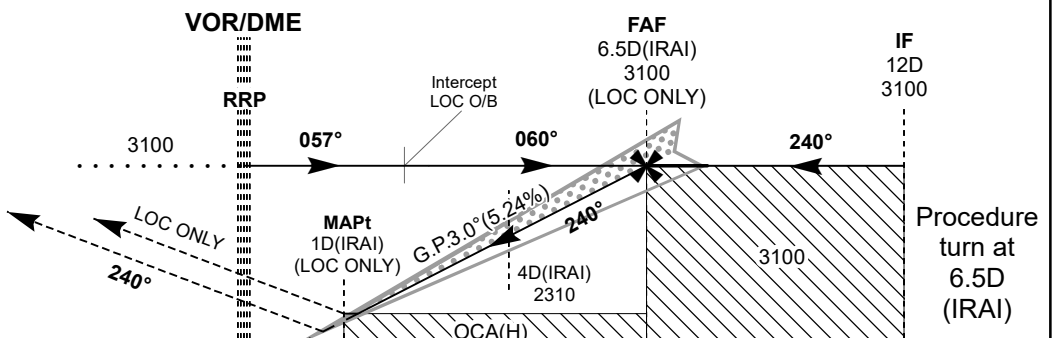


**Transition Altitude 5000**

**MISSED APPROACH**

Climb straight ahead to 3100ft, then turn LEFT to join VOR (116.1 RRP) hold or as instructed by ATC.

**ILS RDH 55**



NAUTICAL MILES FROM THR RWY 24

Distance / Altitude Information for LOC Only Procedure												
OCA(H)	A/B	C	D	Distance (IRAI-DME)	NM	6.5D(FAF)	6D	5D	4D	3D	2D	
Straight-in	ILS	1231(200)			Altitude	Ft	3100	2940	2620	2310	1990	1670
	LOC Only	1440(409)				Ground speed / Rate of Descent Information for LOC Only Procedure						
CIRCLING	1550(506)	1690(646)	1770(726)	Rate of Descent (5.24%)	Ft/Min	Kt	80	100	120	140	160	180
						Ft/Min	425	530	635	745	850	955