

TEL: +91-11-24632950 Extn: 2219/2233 AFS: VIDDYXAX FAX: +91-11-24615508 Email: gmais@aai.aero	INDIA AERONAUTICAL INFORMATION SERVICE AIRPORTS AUTHORITY OF INDIA RAJIV GANDHI BHAVAN SAFDARJUNG AIRPORT NEW DELHI – 110003	109/2026
		25 MAY 2026

File No. ATM-19013(19)/1/2026-ATM

Following supplement is issued for information, guidance and necessary action.

sd/-
विपिन कुमार
VIPIN KUMAR
अध्यक्ष/CHAIRMAN
भारतीय विमानपत्तन प्राधिकरण
AIRPORTS AUTHORITY OF INDIA

[EFFECTIVE DATE: 09 JUL 2026]

INSTRUMENT APPROACH CHART – RNP Y RWY 33 (CAT A/B)
KANGRA AIRPORT, KANGRA (VIGG)

1. Following Instrument Approach Chart is issued for Kangra Airport, Kangra:
 - i. Instrument Approach Chart – RNP Y RWY 33 (CAT A/B)

AMENDMENT/CANCELLATION

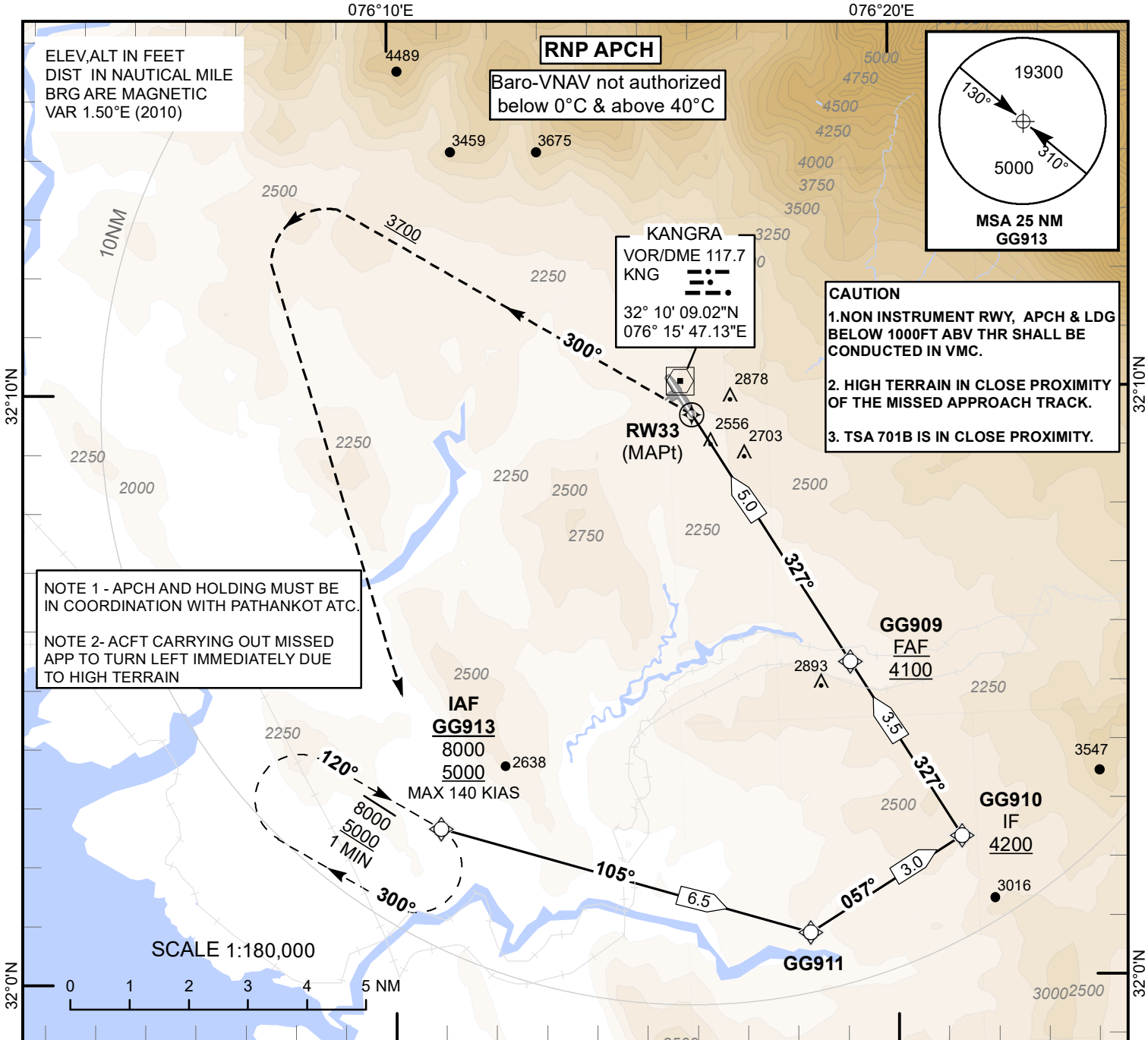
- i. **Insert** Instrument Approach Chart – RNP Y RWY 33 (CAT A/B) of this AIP Supplement in VIGG AD 2.24 of eAIP India and amend list of charts accordingly.

**INSTRUMENT
APPROACH
CHART**

AERODROME ELEV 2527
Heights related to
THR RWY 33 ELEV 2466

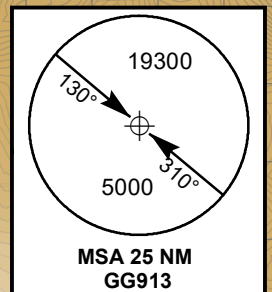
VIGG TWR 122.300/118.050
PATHANKOT ATC 130.100/122.700
ALPHA MONITOR 119.700
NORTHERN CONTROL 125.100/123.050

KANGRA(VIGG)
INDIA
RNP Y RWY 33
(CAT A/B)



NOTE 1 - APCH AND HOLDING MUST BE IN COORDINATION WITH PATHANKOT ATC.
NOTE 2 - ACFT CARRYING OUT MISSED APP TO TURN LEFT IMMEDIATELY DUE TO HIGH TERRAIN

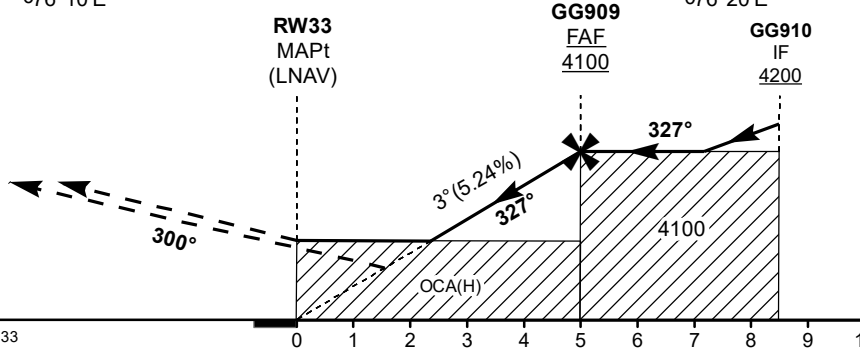
CAUTION
1. NON INSTRUMENT RWY, APCH & LDG BELOW 1000FT ABV THR SHALL BE CONDUCTED IN VMC.
2. HIGH TERRAIN IN CLOSE PROXIMITY OF THE MISSED APPROACH TRACK.
3. TSA 701B IS IN CLOSE PROXIMITY.



Transition Altitude 21000

MISSED APPROACH
Speed restricted to 130 KIAS MAX
Climb on track 300° to 3700ft then climbing turn LEFT proceed direct GG913 to join hold at 5000ft or as instructed by ATC.

TCH 50
THR Elev 2466



OCA(H)		Distance/Altitude Information (LNAV)			
LNAV/VNAV	3010(544)	Distance to RW33	NM	5	3
		Altitude	Ft	4100	3790
LNAV	3320(854)	Rate of Descent/Ground Speed Information			
		Ground Speed	Kt	80	100
		Rate of Descent (5.24%)	Ft/Min	425	530

Tabular Description RNP Y RWY 33 VIGG

RNP Y RWY 33 VIGG										
Serial Number	Path Descriptor	Waypoint Identifier	Course Angle	Fly Over	TM DST	Altitude	Speed Limit	Turn	VA/TCH	Navigation Specification
			°M/°T		MIN/NM	ft	kt		°/ft	
10	IF	GG913				-8000 +5000	-140.00			RNP-APCH
20	TF	GG911	104.73° Mag / 106.23° True		6.49					RNP-APCH
30	TF	GG910	56.51° Mag / 58.01° True		3.04	+4200				RNP-APCH
10	IF	GG910				+4200				RNP-APCH
20	TF	GG909	326.54° Mag / 328.04° True		3.50	@4100				RNP-APCH
30	TF	RW33	326.52° Mag / 328.02° True	Y	4.97	@2516			-3.00/50	RNP-APCH
40	CA		300.00° Mag / 301.50° True			+3700	-130.00	L		RNP-APCH
50	DF	GG913				+5000	-130.00			RNP-APCH
10	HM	GG913	120.00° Mag / 121.50° True	Y		-8000 +5000	-170.00	R		RNP-APCH

Waypoint List

RNP Y RWY 33 VIGG		
Waypoint Identifier	Coordinates	Position of waypoint w.r.t. KNG VOR
RW33	N 32:09:34.73E 076:16:00.88	-
GG909	N 32:05:21.16E 076:19:07.05	R-148 / 5.6D
GG910	N 32:02:22.65E 076:21:17.92	R-147 / 9.1D
GG911	N 32:00:45.85E 076:18:15.92	R-166 / 9.6D
GG913	N 32:02:35.20E 076:10:55.93	R-207 / 8.6D