

TEL: +91-11-24632950 Extn: 2219/2233 AFS: VIDDYXAX FAX: +91-11-24615508 Email: gmais@aai.aero	INDIA AERONAUTICAL INFORMATION SERVICE AIRPORTS AUTHORITY OF INDIA RAJIV GANDHI BHAVAN SAFDARJUNG AIRPORT NEW DELHI – 110003	120/2026
		12 JUN 2026

File No. ATM-19013(19)/1/2026-ATM

Following supplement is issued for information, guidance and necessary action.

sd/-

विपिन कुमार

VIPIN KUMAR

अध्यक्ष/CHAIRMAN

भारतीय विमानपत्तन प्राधिकरण

AIRPORTS AUTHORITY OF INDIA

[EFFECTIVE DATE: 06 AUG 2026]

INSTRUMENT APPROACH CHART – RNP Y RWY 32**(CAT A/B/C)****THIRUVANANTHAPURAM INTERNATIONAL AIRPORT,**
THIRUVANANTHAPURAM (VOTV)

1. Following Instrument Approach Chart is issued for Thiruvananthapuram International Airport, Thiruvananthapuram:
 - i. Instrument Approach Chart – RNP Y RWY 32 (CAT A/B/C)

AMENDMENT/CANCELLATION

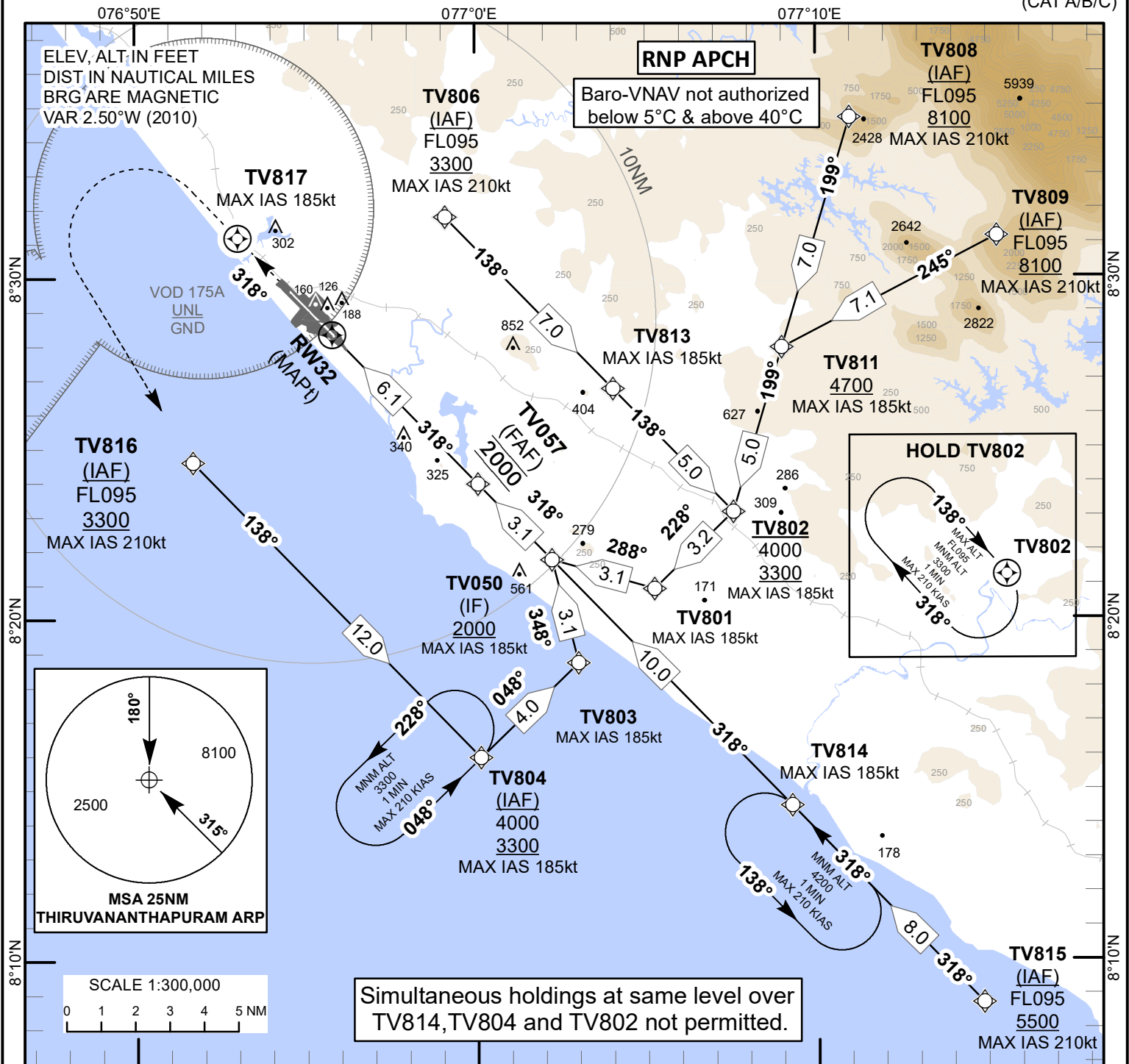
1. **Insert** Instrument Approach Chart – RNP Y RWY 32 and its associated Tabular Description of this AIP Supplement in VOTV AD 2.24 of eAIP India and amend list of charts accordingly.

**INSTRUMENT
APPROACH
CHART**

AERODROME ELEV 17 ft
HEIGHTS RELATED TO
THR RWY 32 - ELEV 16ft

APP 119.600
TWR 118.100/
118.725

THIRUVANANTHAPURAM (VOTV)
INDIA
RNP Y RWY 32
(CAT A/B/C)



Transition Altitude 9000

MISSED APPROACH

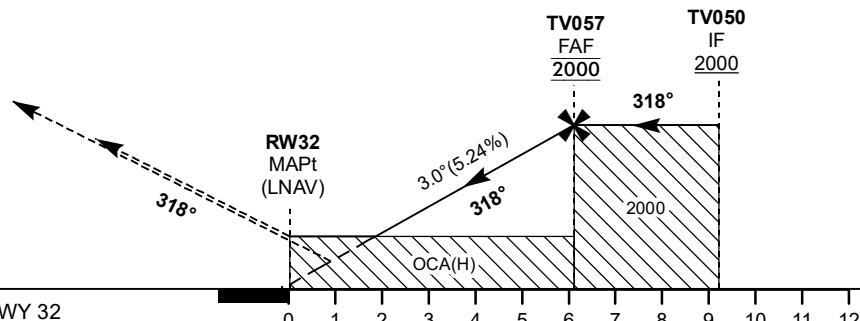
Speed restricted to 185 KIAS MAX

Climb straight ahead, proceed to TV817, then to TV816, then to TV804 to join hold at 3300ft or as instructed by ATC

TCH 50

THR ELEV 16

NAUTICAL MILES FROM THR RWY 32



		Distance/Altitude Information for LNAV							
OCA(H)	A/B/C	Distance to RWY32	NM	6.1(FAF)	6	5	4	3	2
LNAV/VNAV	349(333)	Altitude	Ft	2000	1980	1660	1340	1030	710
LNAV	660(643)								
		Ground speed/ Rate of Descent information							
		Ground Speed	Kt	80	100	120	140	160	
		Rate of Descent (5.24%)	Ft/MIN	425	530	635	745	850	

DRG.NO. AAI/75-IALC/260625/08/06/2026

TABULAR-DESCRIPTION: RNP Y RWY 32 (CAT A/B/C)

Serial-Number	Path-Descriptor	Rec Navaid	Waypoint-Identifier	Fly-Over	Course-°M(°T)	Distance-(Nm)	Turn-direction	Altitude- (ft)	Speed- limit-(Kts)-	VPA/- TCH-°/ft	Navigation-Specification
010	IF		TV808					-FL095 +8100	-210		RNP APCH
020	TF		TV811		199(196.5)	7.0		+4700	-185		RNP APCH
030	TF		TV802		199(196.5)	5.0		-4000 +3300	-185		RNP APCH
040	TF		TV801		228(225.5)	3.2			-185		RNP APCH
050	TF		TV050		288(285.5)	3.1		+2000	-185		RNP APCH
010	IF		TV815					-FL095 +5500	-210		RNP APCH
020	TF		TV814		318(315.5)	8.0			-185		RNP APCH
030	TF		TV050		318(315.5)	10.0		+2000	-185		RNP APCH
010	IF		TV804					-4000 +3300	-185		RNP APCH
020	TF		TV803		048(045.5)	4.0			-185		RNP APCH
030	TF		TV050		348(345.5)	3.1		+2000	-185		RNP APCH
010	IF		TV816					-FL095 +3300	-210		RNP APCH
020	TF		TV804		138(135.5)	12.0		-4000 +3300	-185		RNP APCH
030	TF		TV803		048(045.5)	4.0			-185		RNP APCH
040	TF		TV050		348(345.5)	3.1		+2000	-185		RNP APCH
010	IF		TV809					-FL095 +8100	-210		RNP APCH
020	TF		TV811		245(242.5)	7.1		+4700	-185		RNP APCH
030	TF		TV802		199(196.5)	5.0		-4000 +3300	-185		RNP APCH
040	TF		TV801		228(225.5)	3.2			-185		RNP APCH
050	TF		TV050		288(285.5)	3.1		+2000	-185		RNP APCH
010	IF		TV806					-FL095 +3300	-210		RNP APCH
020	TF		TV813		138(135.5)	7.0			-185		RNP APCH
030	TF		TV802		138(135.5)	5.0		-4000 +3300	-185		RNP APCH

040	TF		TV801		228(225.5)	3.2			-185		RNP APCH
050	TF		TV050		288(285.5)	3.1		+2000	-185		RNP APCH
010	IF		TV050					+2000	-185		RNP APCH
020	TF		TV057		318(315.5)	3.1		@2000			RNP APCH
030	TF		RW32	Y	318(315.5)	6.1		@66		-3.0/50	RNP APCH
040	CF		TV817		318(315.5)				-185		
050	DF		TV816						-185		RNP APCH
060	TF		TV804		138(135.5)	12.0		+3300	-185		RNP APCH
070	HM		TV804	Y	048(045.5)	1 MIN	L	+3300	-210		RNP APCH
010	HM		TV814	Y	318(315.5)	1 MIN	L	+4200	-210		RNP APCH
010	HM		TV802	Y	138(135.5)	1 MIN	R	-FL095 +3300	-210		RNP APCH

WAYPOINT INFORMATION: RNP Y RWY 32 (CAT A/B/C)

RW32	08°28'19.84"N 076°55'46.74"E
TV817	08°31'09.72"N 076°53'01.11"E
TV816	08°24'35.25"N 076°51'41.02"E
TV804	08°15'55.97"N 077°00'06.71"E
TV050	08°21'43.31"N 077°02'12.94"E
TV057	08°23'57.12"N 077°00'02.81"E
TV808	08°34'39.64"N 077°10'59.92"E
TV811	08°27'55.23"N 077°08'58.88"E
TV802	08°23'06.35"N 077°07'32.46"E
TV801	08°20'52.15"N 077°05'13.42"E
TV815	08°08'44.06"N 077°14'50.97"E
TV814	08°14'30.44"N 077°09'14.17"E
TV803	08°18'42.07"N 077°02'58.69"E
TV809	08°31'11.47"N 077°15'19.03"E
TV806	08°31'45.63"N 076°59'06.61"E
TV813	08°26'42.74"N 077°04'01.74"E