

TEL: +91-11-24632950 Extn: 2219/2233 AFS: VIDDYXAX FAX: +91-11-24615508 Email: gmais@aai.aero	INDIA AERONAUTICAL INFORMATION SERVICE AIRPORTS AUTHORITY OF INDIA RAJIV GANDHI BHAVAN SAFDARJUNG AIRPORT NEW DELHI – 110003	122/2026
		25 JUN 2026

File No. ATM-19013(19)/1/2026-ATM

Following supplement is issued for information, guidance and necessary action.

sd/-
विपिन कुमार
VIPIN KUMAR
अध्यक्ष/CHAIRMAN
भारतीय विमानपत्तन प्राधिकरण
AIRPORTS AUTHORITY OF INDIA

[EFFECTIVE DATE: 06 AUG 2026]

RNAV - 1 (GNSS) SIDs AND STARs

NAVI MUMBAI INTERNATIONAL AIRPORT, NAVI MUMBAI (VANM)

1. The following RNAV Standard Arrival Charts - Instrument (STAR) and RNAV Standard Departure Charts - Instrument (SID) are issued for Navi Mumbai International Airport, Navi Mumbai:
 - i) Standard Departure Charts – Instrument (SID) RWY 08
 - ii) Standard Departure Charts – Instrument (SID) RWY 26
 - iii) Standard Arrival Charts – Instrument (STAR) RWY 08
 - iv) Standard Arrival Charts – Instrument (STAR) RWY 26

STANDARD DEPARTURE CHART
INSTRUMENT (SID)

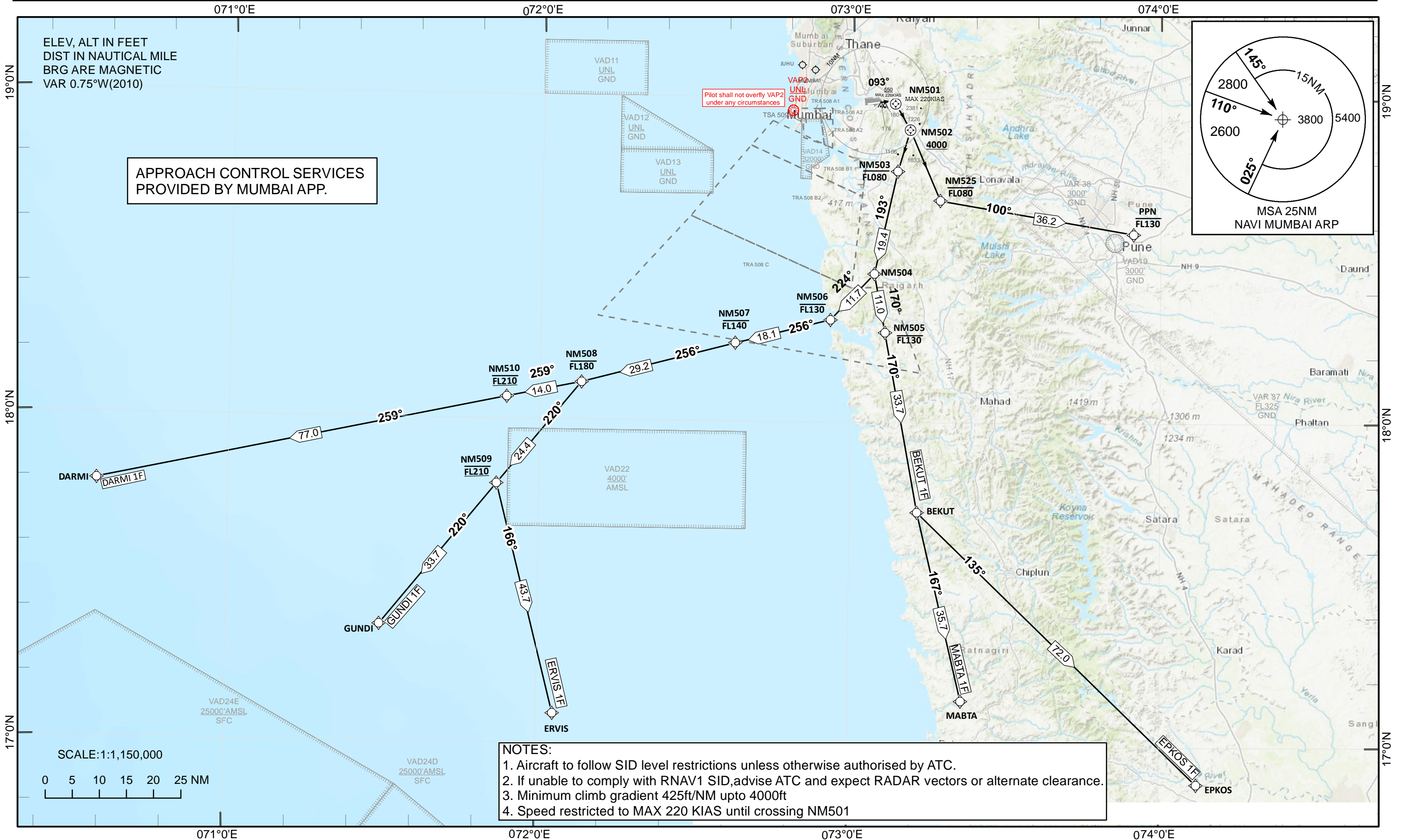
RNAV1(GNSS)
SURVEILLANCE REQUIRED

132.700 MUMBAI ACC(N)
125.350 MUMBAI ACC(S)
133.300 MUMBAI ACC(W)
133.425 MUMBAI LAC(1)
133.850 MUMBAI LAC(2)

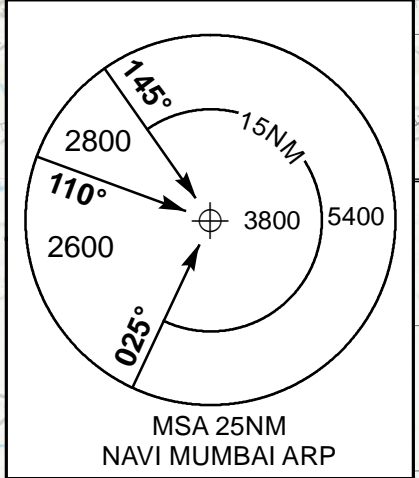
TRANSITION ALT
6000

NAVI TWR 119.000/ 119.775/118.275
MUMBAI APP 124.650/ 125.450/126.975
127.900/119.300/120.350

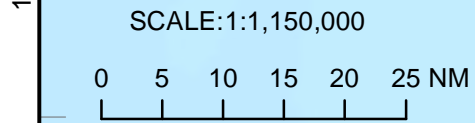
NAVI MUMBAI INTL (VANM)
INDIA
BEKUT 1F, DARMI 1F,
EPKOS 1F, ERVIS 1F, GUNDI 1F,
MABTA 1F, PPN 1F
RWY 08



APPROACH CONTROL SERVICES
PROVIDED BY MUMBAI APP.



- NOTES:**
1. Aircraft to follow SID level restrictions unless otherwise authorised by ATC.
 2. If unable to comply with RNAV1 SID, advise ATC and expect RADAR vectors or alternate clearance.
 3. Minimum climb gradient 425ft/NM upto 4000ft
 4. Speed restricted to MAX 220 KIAS until crossing NM501



**STANDARD DEPARTURE CHART
INSTRUMENT (SID)**

132.700 MUMBAI ACC(N)
125.350 MUMBAI ACC(S)
133.300 MUMBAI ACC(W)
133.425 MUMBAI LAC(1)
133.850 MUMBAI LAC(2)

NAVI TWR 119.000/ 119.775/118.275
MUMBAI APP 124.650/ 125.450/126.975
127.900/119.300/120.350

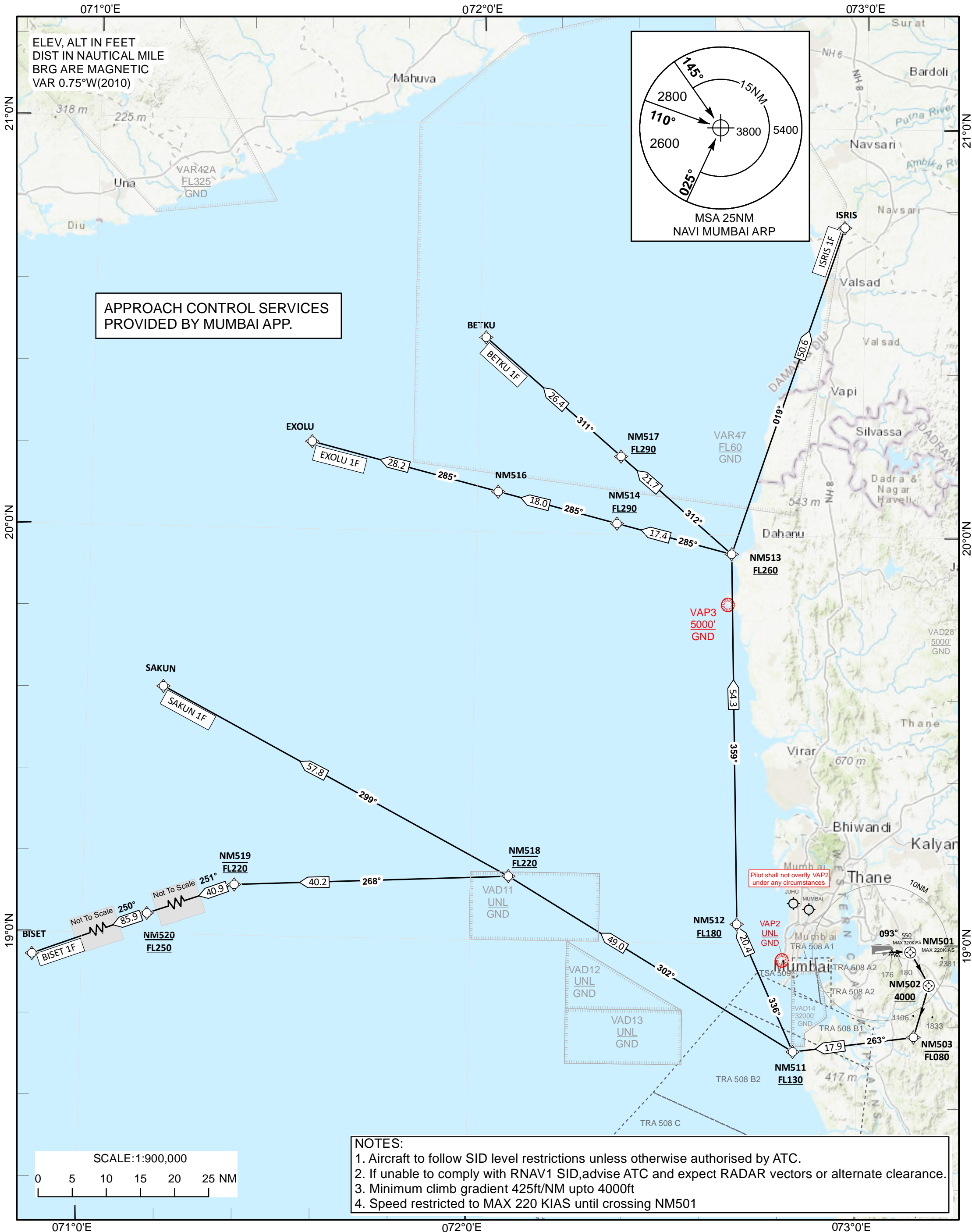
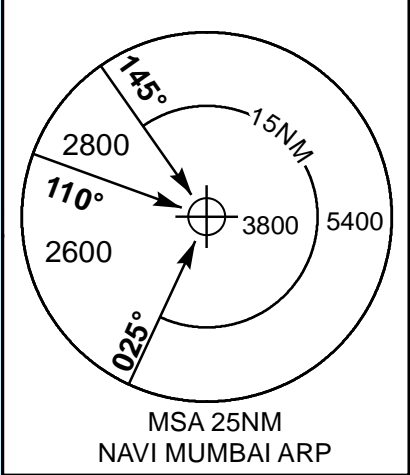
TRANSITION ALT
6000

NAVI MUMBAI INTL(VANM)

INDIA
BETKU 1F, BISET 1F,
EXOLU 1F, ISRIS 1F, SAKUN 1F
RWY08

ELEV, ALT IN FEET
DIST IN NAUTICAL MILE
BRG ARE MAGNETIC
VAR 0.75°W(2010)

APPROACH CONTROL SERVICES
PROVIDED BY MUMBAI APP.



- NOTES:**
1. Aircraft to follow SID level restrictions unless otherwise authorised by ATC.
 2. If unable to comply with RNAV1 SID, advise ATC and expect RADAR vectors or alternate clearance.
 3. Minimum climb gradient 425ft/NM upto 4000ft
 4. Speed restricted to MAX 220 KIAS until crossing NM501

**STANDARD DEPARTURE CHART
INSTRUMENT (SID)**

**RNAV1(GNSS)
SURVEILLANCE REQUIRED**

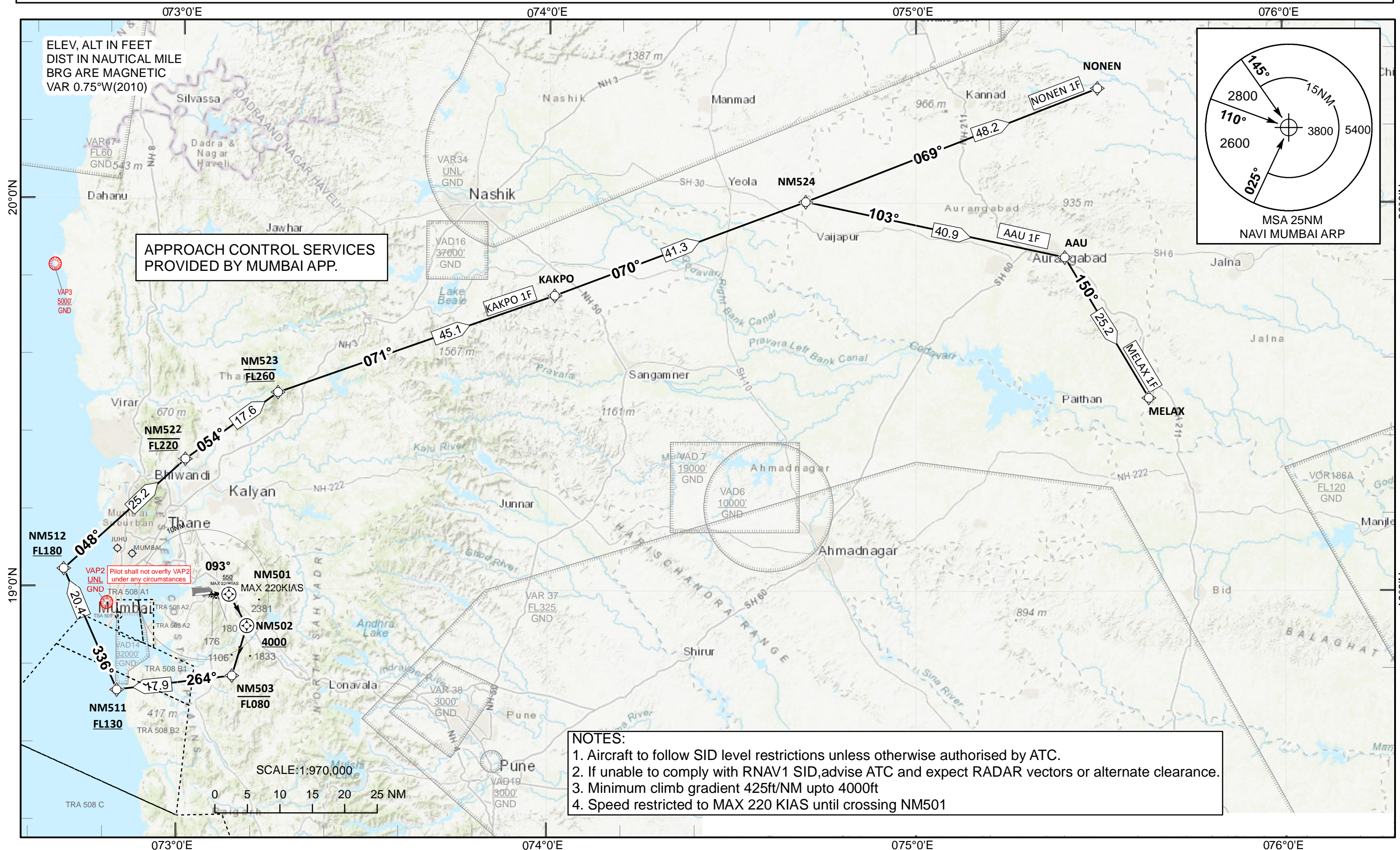
132.700 MUMBAI ACC(N)
125.350 MUMBAI ACC(S)
133.300 MUMBAI ACC(W)
133.425 MUMBAI LAC(1)
133.850 MUMBAI LAC(2)

TRANSITION ALT
6000

NAVI TWR 119.000/ 119.775/118.275
MUMBAI APP 124.650/ 125.450/126.975
127.900/119.300/120.350

NAVI MUMBAI INTL (VANM)

INDIA
AAU 1F, KAKPO1F,
MELAX 1F, NONEN 1F
RWY08



NOTES:
1. Aircraft to follow SID level restrictions unless otherwise authorised by ATC.
2. If unable to comply with RNAV1 SID, advise ATC and expect RADAR vectors or alternate clearance.
3. Minimum climb gradient 425ft/NM upto 4000ft
4. Speed restricted to MAX 220 KIAS until crossing NM501

TABULAR DESCRIPTION

SID AAU 1F - RWY 08										
Serial Number	Path Descriptor	Waypoint Identifier	Fly-Over	Course °M(°T)	Distance (NM)	Turn Direction	Altitude (ft)	Speed Limit (Kt)	VPA (%)	Navigation Specification
10	VA			093.13(092.38)			+550	-220.00	7	RNAV 1
20	DF	NM501	Y					-220.00	7	RNAV 1
30	DF	NM502	Y				+4000		7	RNAV 1
40	DF	NM503					-FL080			RNAV 1
50	TF	NM511		263.81(263.06)	17.86		+FL130			RNAV 1
60	TF	NM512		336.39(335.64)	20.38		+FL180			RNAV 1
70	TF	NM522		048.15(047.40)	25.22		@FL220			RNAV 1
80	TF	NM523		054.40(053.65)	17.57		@FL260			RNAV 1
90	TF	KAKPO		070.96(070.21)	45.14					RNAV 1
100	TF	NM524		069.93(069.18)	41.28					RNAV 1
110	TF	AAU		102.72(101.97)	40.89					RNAV 1

SID KAPKO 1F - RWY 08										
Serial Number	Path Descriptor	Waypoint Identifier	Fly-Over	Course °M(°T)	Distance (NM)	Turn Direction	Altitude (ft)	Speed Limit (Kt)	VPA (%)	Navigation Specification
10	VA			093.13(092.38)			+550	-220.00	7	RNAV 1
20	DF	NM501	Y					-220.00	7	RNAV 1
30	DF	NM502	Y				+4000		7	RNAV 1
40	DF	NM503					-FL080			RNAV 1
50	TF	NM511		263.81(263.06)	17.86		+FL130			RNAV 1
60	TF	NM512		336.39(335.64)	20.38		+FL180			RNAV 1
70	TF	NM522		048.15(047.40)	25.22		@FL220			RNAV 1
80	TF	NM523		054.40(053.65)	17.57		@FL260			RNAV 1
90	TF	KAKPO		070.96(070.21)	45.14					RNAV 1

SID MELAX 1F - RWY 08										
Serial Number	Path Descriptor	Waypoint Identifier	Fly-Over	Course °M(°T)	Distance (NM)	Turn Direction	Altitude (ft)	Speed Limit (Kt)	VPA (%)	Navigation Specification
10	VA			093.13(092.38)			+550	-220.00	7	RNAV 1
20	DF	NM501	Y					-220.00	7	RNAV 1
30	DF	NM502	Y				+4000		7	RNAV 1
40	DF	NM503					-FL080			RNAV 1
50	TF	NM511		263.81(263.06)	17.86		+FL130			RNAV 1
60	TF	NM512		336.39(335.64)	20.38		+FL180			RNAV 1
70	TF	NM522		048.15(047.40)	25.22		@FL220			RNAV 1
80	TF	NM523		054.40(053.65)	17.57		@FL260			RNAV 1
90	TF	KAKPO		070.96(070.21)	45.14					RNAV 1
100	TF	NM524		069.93(069.18)	41.28					RNAV 1
110	TF	AAU		102.72(101.97)	40.89					RNAV 1
120	TF	MELAX		150.10(149.35)	25.16					RNAV 1

RNAV1 SIDs RWY 08 – AAU 1F, KAKPO 1F, MELAX 1F, NONEN 1F

SID NONEN 1F - RWY 08										
Serial Number	Path Descriptor	Waypoint Identifier	Fly-Over	Course °M(°T)	Distance (NM)	Turn Direction	Altitude (ft)	Speed Limit (Kt)	VPA (%)	Navigation Specification
10	VA			093.13(092.38)			+550	-220.00	7	RNAV 1
20	DF	NM501	Y					-220.00	7	RNAV 1
30	DF	NM502	Y				+4000		7	RNAV 1
40	DF	NM503					-FL080			RNAV 1
50	TF	NM511		263.81(263.06)	17.86		+FL130			RNAV 1
60	TF	NM512		336.39(335.64)	20.38		+FL180			RNAV 1
70	TF	NM522		048.15(047.40)	25.22		@FL220			RNAV 1
80	TF	NM523		054.40(053.65)	17.57		@FL260			RNAV 1
90	TF	KAKPO		070.96(070.21)	45.14					RNAV 1
100	TF	NM524		069.93(069.18)	41.28					RNAV 1
110	TF	NONEN		069.41(068.66)	48.22					RNAV 1

TABULAR DESCRIPTION

SID BETKU 1F - RWY 08										
Serial Number	Path Descriptor	Waypoint Identifier	Fly-Over	Course °M(°T)	Distance (NM)	Turn Direction	Altitude (ft)	Speed Limit (Kt)	VPA (%)	Navigation Specification
10	VA			093.13(092.38)			+550	-220.00	7	RNAV 1
20	DF	NM501	Y					-220.00	7	RNAV 1
30	DF	NM502	Y				+4000		7	RNAV 1
40	DF	NM503					-FL080			RNAV 1
50	TF	NM511		263.41(262.66)	17.86		+FL130			RNAV 1
60	TF	NM512		336.39(335.64)	20.38		+FL180			RNAV 1
70	TF	NM513		359.19(358.44)	54.27		+FL260			RNAV 1
80	TF	NM517		311.50(310.75)	21.66		+FL290			RNAV 1
90	TF	BETKU		311.37(310.62)	26.38					RNAV 1

SID BISET 1F - RWY 08										
Serial Number	Path Descriptor	Waypoint Identifier	Fly-Over	Course °M(°T)	Distance (NM)	Turn Direction	Altitude (ft)	Speed Limit (Kt)	VPA (%)	Navigation Specification
10	VA			093.13(092.38)			+550	-220.00	7	RNAV 1
20	DF	NM501	Y					-220.00	7	RNAV 1
30	DF	NM502	Y				+4000		7	RNAV 1
40	DF	NM503					-FL080			RNAV 1
50	TF	NM511		263.41(262.66)	17.86		+FL130			RNAV 1
60	TF	NM518		301.76(301.01)	48.96		@FL220			RNAV 1
70	TF	NM519		268.14(267.39)	40.23		@FL220			RNAV 1
80	TF	NM520		251.28(250.53)	40.90		@FL250			RNAV 1
90	TF	BISET		250.35(249.60)	85.87					RNAV 1

SID EXOLU 1F - RWY 08										
Serial Number	Path Descriptor	Waypoint Identifier	Fly-Over	Course °M(°T)	Distance (NM)	Turn Direction	Altitude (ft)	Speed Limit (Kt)	VPA (%)	Navigation Specification
10	VA			093.13(092.38)			+550	-220.00	7	RNAV 1
20	DF	NM501	Y					-220.00	7	RNAV 1
30	DF	NM502	Y				+4000		7	RNAV 1
40	DF	NM503					-FL080			RNAV 1
50	TF	NM511		263.41(262.66)	17.86		+FL130			RNAV 1
60	TF	NM512		336.39(335.64)	20.38		+FL180			RNAV 1
70	TF	NM513		359.19(358.44)	54.27		+FL260			RNAV 1
80	TF	NM514		285.05(284.30)	17.41		+FL290			RNAV 1
90	TF	NM516		284.95(284.20)	18.00					RNAV 1
100	TF	EXOLU		284.84(284.09)	28.24					RNAV 1

RNAV1 SIDs RWY 08 - BETKU 1F, BISET 1F, EXOLU 1F, ISRIS 1F, SAKUN 1F

SID ISRIS 1F - RWY 08										
Serial Number	Path Descriptor	Waypoint Identifier	Fly-Over	Course °M(°T)	Distance (NM)	Turn Direction	Altitude (ft)	Speed Limit (Kt)	VPA (%)	Navigation Specification
10	VA			093.13(092.38)			+550	-220.00	7	RNAV 1
20	DF	NM501	Y					-220.00	7	RNAV 1
30	DF	NM502	Y				+4000		7	RNAV 1
40	DF	NM503					-FL080			RNAV 1
50	TF	NM511		263.41(262.66)	17.86		+FL130			RNAV 1
60	TF	NM512		336.39(335.64)	20.38		+FL180			RNAV 1
70	TF	NM513		359.19(358.44)	54.27		+FL260			RNAV 1
80	TF	ISRIS		019.12(018.37)	50.64					RNAV 1

SID SAKUN 1F - RWY 08										
Serial Number	Path Descriptor	Waypoint Identifier	Fly-Over	Course °M(°T)	Distance (NM)	Turn Direction	Altitude (ft)	Speed Limit (Kt)	VPA (%)	Navigation Specification
10	VA			093.13(092.38)			+550	-220.00	7	RNAV 1
20	DF	NM501	Y					-220.00	7	RNAV 1
30	DF	NM502	Y				+4000		7	RNAV 1
40	DF	NM503					-FL080			RNAV 1
50	TF	NM511		263.41(262.66)	17.86		+FL130			RNAV 1
60	TF	NM518		301.76(301.01)	48.96		@FL220			RNAV 1
70	TF	SAKUN		298.71(297.96)	57.76					RNAV 1

RNAV1 SIDs RWY 08 - BETKU 1F, BISET 1F, EXOLU 1F, ISRIS 1F, SAKUN 1F

TABULAR DESCRIPTION

SID BEKUT 1F - RWY 08										
Serial Number	Path Descriptor	Waypoint Identifier	Fly-Over	Course °M(°T)	Distance (NM)	Turn Direction	Altitude (ft)	Speed Limit (Kt)	VPA (%)	Navigation Specification
10	VA			093.13(092.38)			+550	-220.00	7	RNAV 1
20	DF	NM501	Y					-220.00	7	RNAV 1
30	DF	NM502	Y				+4000		7	RNAV 1
40	DF	NM503					-FL080			RNAV 1
50	TF	NM504		193.14(192.39)	19.39					RNAV 1
60	TF	NM505		170.16(169.41)	11.00		-FL130			RNAV 1
70	TF	BEKUT		170.17(169.42)	33.69					RNAV 1

SID DARMI 1F - RWY 08										
Serial Number	Path Descriptor	Waypoint Identifier	Fly-Over	Course °M(°T)	Distance (NM)	Turn Direction	Altitude (ft)	Speed Limit (Kt)	VPA (%)	Navigation Specification
10	VA			093.13(092.38)			+550	-220.00	7	RNAV 1
20	DF	NM501	Y					-220.00	7	RNAV 1
30	DF	NM502	Y				+4000		7	RNAV 1
40	DF	NM503					-FL080			RNAV 1
50	TF	NM504		193.14(192.39)	19.39					RNAV 1
60	TF	NM506		224.20(223.45)	11.69		-FL130			RNAV 1
70	TF	NM507		256.45(255.70)	18.06		-FL140			RNAV 1
80	TF	NM508		255.94(255.19)	29.22		-FL180			RNAV 1
90	TF	NM510		259.07(258.32)	13.98		@FL210			RNAV 1
100	TF	DARMI		258.74(257.99)	77.03					RNAV 1

SID EPKOS 1F - RWY 08										
Serial Number	Path Descriptor	Waypoint Identifier	Fly-Over	Course °M(°T)	Distance (NM)	Turn Direction	Altitude (ft)	Speed Limit (Kt)	VPA (%)	Navigation Specification
10	VA			093.13(092.38)			+550	-220.00	7	RNAV 1
20	DF	NM501	Y					-220.00	7	RNAV 1
30	DF	NM502	Y				+4000		7	RNAV 1
40	DF	NM503					-FL080			RNAV 1
50	TF	NM504		193.14(192.39)	19.39					RNAV 1
60	TF	NM505		170.16(169.41)	11.00		-FL130			RNAV 1
70	TF	BEKUT		170.17(169.42)	33.69					RNAV 1
80	TF	EPKOS		134.62(133.87)	72.00					RNAV 1

RNAV1 SIDs RWY 08 - - BEKUT 1F, DARMI 1F, EPKOS 1F, ERVIS 1F, GUNDI 1F, MABTA 1F, PPN 1F

SID ERVIS 1F - RWY 08

Serial Number	Path Descriptor	Waypoint Identifier	Fly-Over	Course °M(°T)	Distance (NM)	Turn Direction	Altitude (ft)	Speed Limit (Kt)	VPA (%)	Navigation Specification
10	VA			093.13(092.38)			+550	-220.00	7	RNAV 1
20	DF	NM501	Y					-220.00	7	RNAV 1
30	DF	NM502	Y				+4000		7	RNAV 1
40	DF	NM503					-FL080			RNAV 1
50	TF	NM504		193.14(192.39)	19.39					RNAV 1
60	TF	NM506		224.20(223.45)	11.69		-FL130			RNAV 1
70	TF	NM507		256.45(255.70)	18.06		-FL140			RNAV 1
80	TF	NM508		255.94(255.19)	29.22		-FL180			RNAV 1
90	TF	NM509		219.92(219.17)	24.39		@FL210			RNAV 1
100	TF	ERVIS		166.27(165.52)	43.66					RNAV 1

SID GUNDI 1F - RWY 08

Serial Number	Path Descriptor	Waypoint Identifier	Fly-Over	Course °M(°T)	Distance (NM)	Turn Direction	Altitude (ft)	Speed Limit (Kt)	VPA (%)	Navigation Specification
10	VA			093.13(092.38)			+550	-220.00	7	RNAV 1
20	DF	NM501	Y					-220.00	7	RNAV 1
30	DF	NM502	Y				+4000		7	RNAV 1
40	DF	NM503					-FL080			RNAV 1
50	TF	NM504		193.14(192.39)	19.39					RNAV 1
60	TF	NM506		224.20(223.45)	11.69		-FL130			RNAV 1
70	TF	NM507		256.45(255.70)	18.06		-FL140			RNAV 1
80	TF	NM508		255.94(255.19)	29.22		-FL180			RNAV 1
90	TF	NM509		219.92(219.17)	24.39		@FL210			RNAV 1
100	TF	GUNDI		219.85(219.10)	33.72					RNAV 1

SID MABTA 1F - RWY 08

Serial Number	Path Descriptor	Waypoint Identifier	Fly-Over	Course °M(°T)	Distance (NM)	Turn Direction	Altitude (ft)	Speed Limit (Kt)	VPA (%)	Navigation Specification
10	VA			093.13(092.38)			+550	-220.00	7	RNAV 1
20	DF	NM501	Y					-220.00	7	RNAV 1
30	DF	NM502	Y				+4000		7	RNAV 1
40	DF	NM503					-FL080			RNAV 1
50	TF	NM504		193.14(192.39)	19.39					RNAV 1
60	TF	NM505		170.16(169.41)	11.00		-FL130			RNAV 1
70	TF	BEKUT		170.17(169.42)	33.69					RNAV 1
80	TF	MABTA		167.29(166.54)	35.71					RNAV 1

SID PPN1F - RWY 08

Serial Number	Path Descriptor	Waypoint Identifier	Fly-Over	Course °M(°T)	Distance (NM)	Turn Direction	Altitude (ft)	Speed Limit (Kt)	VPA (%)	Navigation Specification
10	VA			093.13(092.38)			+550	-220.00	7	RNAV 1
20	DF	NM501	Y					-220.00	7	RNAV 1
30	DF	NM502	Y				+4000		7	RNAV 1
40	DF	NM525					-FL080			RNAV 1
50	TF	PPN		100.17(099.42)	36.20		-FL130			RNAV 1

RNAV1 SIDs RWY 08 - - BEKUT 1F, DARMI 1F, EPKOS 1F, ERVIS 1F, GUNDI 1F, MABTA 1F, PPN 1F

**STANDARD DEPARTURE CHART
INSTRUMENT (SID)**

**RNAV1(GNSS)
SURVEILLANCE REQUIRED**

TRANSITION ALT
6000

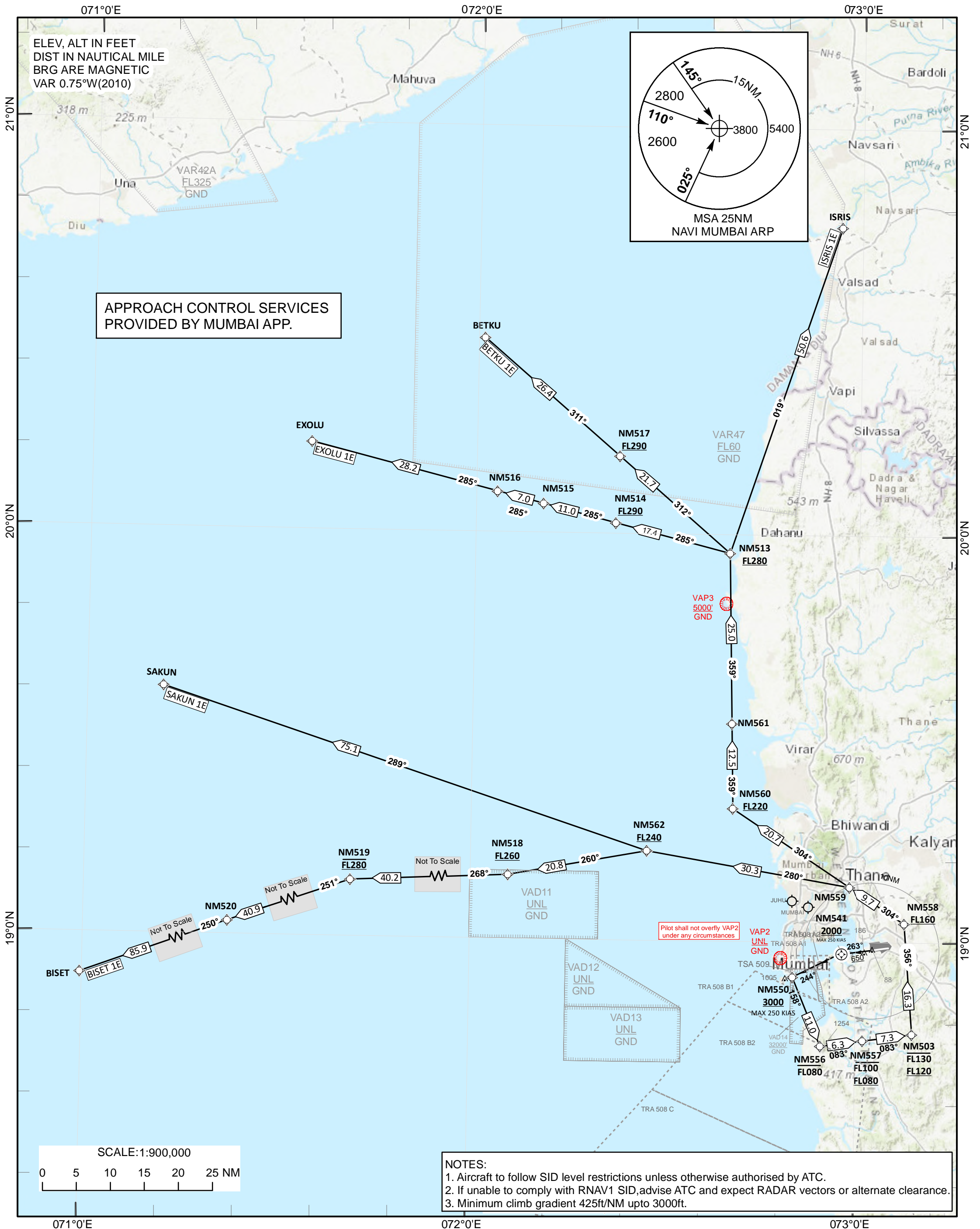
132.700 ACC(N)
125.350 ACC(S)
133.300 ACC(W)
133.425 LAC(1)
133.850 LAC(2)

NAVI TWR 119.000/ 119.775/118.275
MUMBAI APP 124.650/ 125.450/126.975
127.900/119.300/120.350

NAVI MUMBAI INTL (VANM)

INDIA

BETKU 1E, BISET 1E,
EXOLU 1E, ISRIS 1E, SAKUN 1E
RWY26



**STANDARD DEPARTURE CHART
INSTRUMENT (SID)**

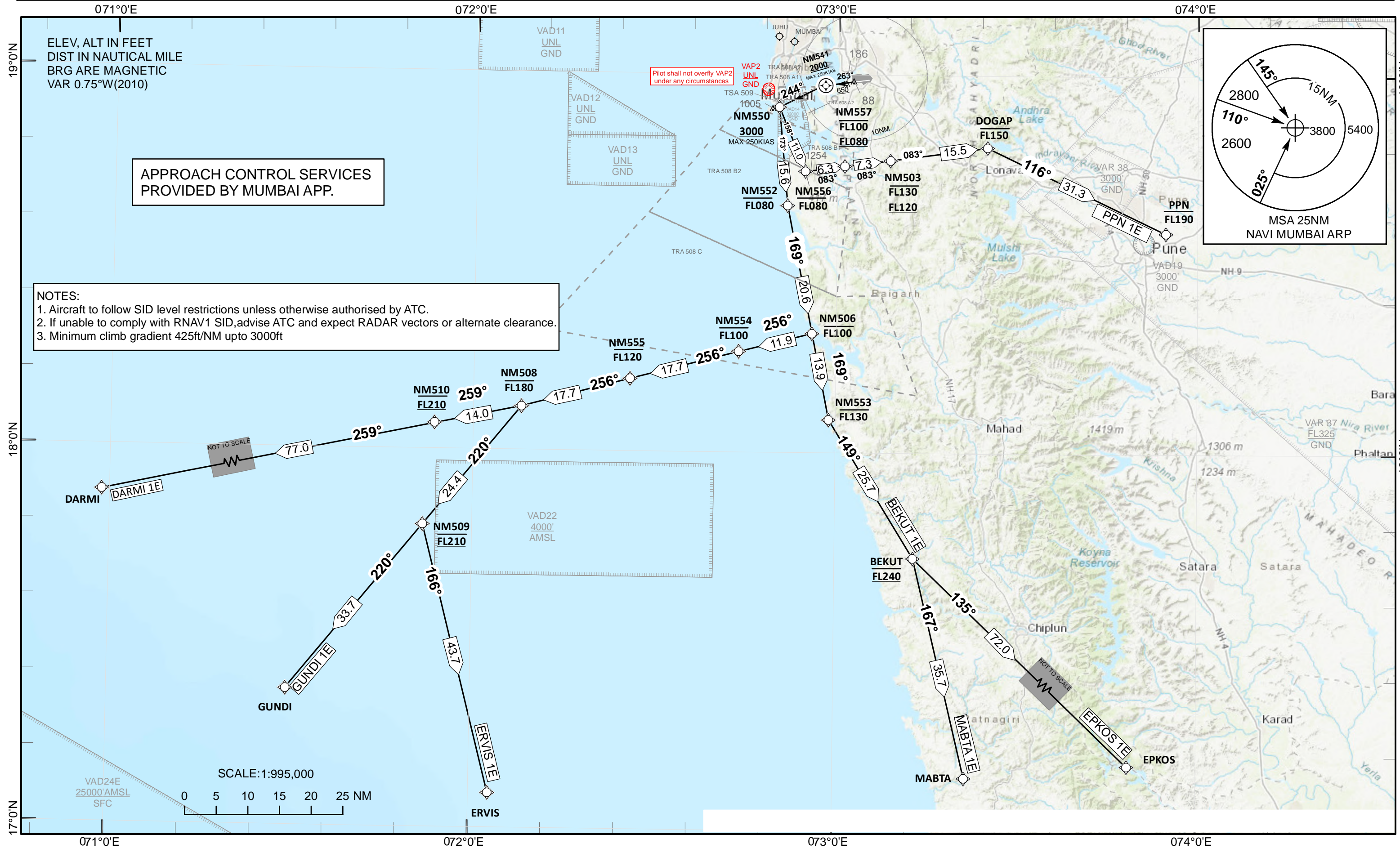
**RNAV1(GNSS)
SURVEILLANCE REQUIRED**

TRANSITION ALT
6000

132.700 ACC(N)
125.350 ACC(S)
133.300 ACC(W)
133.425 LAC(1)
133.850 LAC(2)

NAVI TWR 119.000/ 119.775/118.275
MUMBAI APP 124.650/ 125.450/126.975
127.900/119.300/120.350

NAVI MUMBAI INTL (VANM)
INDIA
BEKUT 1E, DARMI 1E,
EPKOS 1E, ERVIS 1E,
GUNDI 1E, MABTA 1E, PPN 1E
RWY 26



TABULAR DESCRIPTION

SID BETKU 1E - RWY 26										
Serial Number	Path Descriptor	Waypoint Identifier	Fly-Over	Course °M(°T)	Distance (NM)	Turn Direction	Altitude (ft)	Speed Limit (Kt)	VPA (%)	Navigation Specification
10	VA			263.12(262.37)			+650	-250.00	7	RNAV 1
20	DF	NM541	Y				+2000	-250.00	7	RNAV 1
30	CF	NM550		244.10(243.35)			+3000	-250.00		RNAV 1
40	TF	NM556		158.15(157.40)	10.97		-FL080			RNAV 1
50	TF	NM557		083.08(082.33)	6.26		-FL100 +FL080			RNAV 1
60	TF	NM503		082.96(082.21)	7.32		-FL130 +FL120			RNAV 1
70	TF	NM558		356.27(355.52)	16.31		+FL160			RNAV 1
80	TF	NM559		304.20(303.45)	9.67					RNAV 1
90	TF	NM560		304.16(303.41)	20.71		+FL220			RNAV 1
100	TF	NM561		359.37(358.62)	12.50					RNAV 1
110	TF	NM513		359.37(358.62)	25.04		+FL280			RNAV 1
120	TF	NM517		311.50(310.75)	21.66		+FL290			RNAV 1
130	TF	BETKU		311.37(310.62)	26.38					RNAV 1

SID BISET 1E - RWY 26										
Serial Number	Path Descriptor	Waypoint Identifier	Fly-Over	Course °M(°T)	Distance (NM)	Turn Direction	Altitude (ft)	Speed Limit (Kt)	VPA (%)	Navigation Specification
10	VA			263.12(262.37)			+650	-250.00	7	RNAV 1
20	DF	NM541	Y				+2000	-250.00	7	
30	CF	NM550		244.10(243.35)			+3000	-250.00		RNAV 1
40	TF	NM556		158.15(157.40)	10.97		-FL080			RNAV 1
50	TF	NM557		083.08(082.33)	6.26		-FL100 +FL080			RNAV 1
60	TF	NM503		082.96(082.21)	7.32		-FL130 +FL120			RNAV 1
70	TF	NM558		356.27(355.52)	16.31		+FL160			RNAV 1
80	TF	NM559		304.20(303.45)	9.67					RNAV 1
90	TF	NM562		280.42(279.67)	30.32		+FL240			RNAV 1
100	TF	NM518		260.26(259.51)	20.75		+FL260			RNAV 1
110	TF	NM519		268.14(267.39)	40.23		@FL280			RNAV 1
120	TF	NM520		251.28(250.53)	40.90					RNAV 1
130	TF	BISET		250.35(249.60)	85.87					RNAV 1

RNAV1 SIDs RWY 26 - BETKU 1E, BISET 1E, EXOLU 1E, ISRIS 1E, SAKUN 1E

SID EXOLU 1E - RWY 26										
Serial Number	Path Descriptor	Waypoint Identifier	Fly-Over	Course °M(°T)	Distance (NM)	Turn Direction	Altitude (ft)	Speed Limit (Kt)	VPA (%)	Navigation Specification
10	VA			263.12(262.37)			+650	-250.00	7	RNAV 1
20	DF	NM541	Y				+2000	-250.00	7	RNAV 1
30	CF	NM550		244.10(243.35)			+3000	-250.00		RNAV 1
40	TF	NM556		158.15(157.40)	10.97		-FL080			RNAV 1
50	TF	NM557		083.08(082.33)	6.26		-FL100 +FL080			RNAV 1
60	TF	NM503		082.96(082.21)	7.32		-FL130 +FL120			RNAV 1
70	TF	NM558		356.27(355.52)	16.31		+FL160			RNAV 1
80	TF	NM559		304.20(303.45)	9.67					RNAV 1
90	TF	NM560		304.16(303.41)	20.71		+FL220			RNAV 1
100	TF	NM561		359.37(358.62)	12.50					RNAV 1
110	TF	NM513		359.37(358.62)	25.04		+FL280			RNAV 1
120	TF	NM514		285.05(284.30)	17.41		+FL290			RNAV 1
130	TF	NM515		284.95(284.20)	11.00					RNAV 1
140	TF	NM516		284.88(284.13)	7.00					RNAV 1
150	TF	EXOLU		284.84(284.09)	28.24					RNAV 1

SID ISRIS 1E - RWY 26										
Serial Number	Path Descriptor	Waypoint Identifier	Fly-Over	Course °M(°T)	Distance (NM)	Turn Direction	Altitude (ft)	Speed Limit (Kt)	VPA (%)	Navigation Specification
10	VA			263.12(262.37)			+650	-250.00	7	RNAV 1
20	DF	NM541	Y				+2000	-250.00	7	RNAV 1
30	CF	NM550		244.10(243.35)			+3000	-250.00		RNAV 1
40	TF	NM556		158.15(157.40)	10.97		-FL080			RNAV 1
50	TF	NM557		083.08(082.33)	6.26		-FL100 +FL080			RNAV 1
60	TF	NM503		082.96(082.21)	7.32		-FL130 +FL120			RNAV 1
70	TF	NM558		356.27(355.52)	16.31		+FL160			RNAV 1
80	TF	NM559		304.20(303.45)	9.67					RNAV 1
90	TF	NM560		304.16(303.41)	20.71		+FL220			RNAV 1
100	TF	NM561		359.37(358.62)	12.50					RNAV 1
110	TF	NM513		359.37(358.62)	25.04		+FL280			RNAV 1
120	TF	ISRIS		019.12(018.37)	50.64					RNAV 1

SID SAKUN 1E - RWY 26										
Serial Number	Path Descriptor	Waypoint Identifier	Fly-Over	Course °M(°T)	Distance (NM)	Turn Direction	Altitude (ft)	Speed Limit (Kt)	VPA (%)	Navigation Specification
10	VA			263.12(262.37)			+650	-250.00	7	RNAV 1
20	DF	NM541	Y				+2000	-250.00	7	RNAV 1
30	CF	NM550		244.10(243.35)			+3000	-250.00		RNAV 1
40	TF	NM556		158.15(157.40)	10.97		-FL080			RNAV 1
50	TF	NM557		083.08(082.33)	6.26		-FL100 +FL080			RNAV 1
60	TF	NM503		082.96(082.21)	7.32		-FL130 +FL120			RNAV 1
70	TF	NM558		356.27(355.52)	16.31		+FL160			RNAV 1
80	TF	NM559		304.20(303.45)	9.67					RNAV 1
90	TF	NM562		280.42(279.67)	30.32		+FL240			RNAV 1
100	TF	SAKUN		288.91(288.16)	75.11					RNAV 1

RNAV1 SIDs RWY 26 - BETKU 1E, BISET 1E, EXOLU 1E, ISRIS 1E, SAKUN 1E

TABULAR DESCRIPTION

SID AAU 1E - RWY 26										
Serial Number	Path Descriptor	Waypoint Identifier	Fly-Over	Course °M(°T)	Distance (NM)	Turn Direction	Altitude (ft)	Speed Limit (Kt)	VPA (%)	Navigation Specification
10	VA			263.12(262.37)			+650	-250.00	7	RNAV 1
20	DF	NM541	Y				+2000	-250.00	7	RNAV 1
30	CF	NM550		244.10(243.35)			+3000	-250.00		RNAV 1
40	TF	NM556		158.15(157.40)	10.97		-FL080			RNAV 1
50	TF	NM557		083.08(082.33)	6.26		-FL100 +FL080			RNAV 1
60	TF	NM503		082.96(082.21)	7.32		-FL130 +FL120			RNAV 1
70	TF	NM563		041.75(041.00)	17.23		-FL150			RNAV 1
80	TF	BB156		039.84(039.09)	9.12		@FL200			RNAV 1
90	TF	KAKPO		040.34(039.59)	50.46					RNAV 1
100	TF	NM524		069.93(069.18)	41.28					RNAV 1
110	TF	AAU		102.72(101.97)	40.89					RNAV 1

SID KAKPO 1E - RWY 26										
Serial Number	Path Descriptor	Waypoint Identifier	Fly-Over	Course °M(°T)	Distance (NM)	Turn Direction	Altitude (ft)	Speed Limit (Kt)	VPA (%)	Navigation Specification
10	VA			263.12(262.37)			+650	-250.00	7	RNAV 1
20	DF	NM541	Y				+2000	-250.00	7	RNAV 1
30	CF	NM550		244.10(243.35)			+3000	-250.00		RNAV 1
40	TF	NM556		158.15(157.40)	10.97		-FL080			RNAV 1
50	TF	NM557		083.08(082.33)	6.26		-FL100 +FL080			RNAV 1
60	TF	NM503		082.96(082.21)	7.32		-FL130 +FL120			RNAV 1
70	TF	NM563		041.75(041.00)	17.23		-FL150			RNAV 1
80	TF	BB156		039.84(039.09)	9.12		@FL200			RNAV 1
90	TF	KAKPO		040.34(039.59)	50.46					RNAV 1
110										

SID MELAX 1E - RWY 26										
Serial Number	Path Descriptor	Waypoint Identifier	Fly-Over	Course °M(°T)	Distance (NM)	Turn Direction	Altitude (ft)	Speed Limit (Kt)	VPA (%)	Navigation Specification
10	VA			263.12(262.37)			+650	-250.00	7	RNAV 1
20	DF	NM541	Y				+2000	-250.00	7	RNAV 1
30	CF	NM550		244.10(243.35)			+3000	-250.00		RNAV 1
40	TF	NM556		158.15(157.40)	10.97		-FL080			RNAV 1
50	TF	NM557		083.08(082.33)	6.26		-FL100 +FL080			RNAV 1
60	TF	NM503		082.96(082.21)	7.32		-FL130 +FL120			RNAV 1
70	TF	NM563		041.75(041.00)	17.23		-FL150			RNAV 1
80	TF	BB156		039.84(039.09)	9.12		@FL200			RNAV 1
90	TF	KAKPO		040.34(039.59)	50.46					RNAV 1
100	TF	NM524		069.93(069.18)	41.28					RNAV 1
110	TF	AAU		102.72(101.97)	40.89					RNAV 1
120	TF	MELAX		150.10(149.35)	25.16					RNAV 1

RNAV1 SIDs RWY 26 – AAU 1E, KAKPO 1E, MELAX 1E, NONEN 1E

SID NONEN 1E - RWY 26										
Serial Number	Path Descriptor	Waypoint Identifier	Fly-Over	Course °M(°T)	Distance (NM)	Turn Direction	Altitude (ft)	Speed Limit (Kt)	VPA (%)	Navigation Specification
10	VA			263.12(262.37)			+650	-250.00	7	RNAV 1
20	DF	NM541	Y				+2000	-250.00	7	RNAV 1
30	CF	NM550		244.10(243.35)			+3000	-250.00		RNAV 1
40	TF	NM556		158.15(157.40)	10.97		-FL080			RNAV 1
50	TF	NM557		083.08(082.33)	6.26		-FL100 +FL080			RNAV 1
60	TF	NM503		082.96(082.21)	7.32		-FL130 +FL120			RNAV 1
70	TF	NM563		041.75(041.00)	17.23		-FL150			RNAV 1
80	TF	BB156		039.84(039.09)	9.12		@FL200			RNAV 1
90	TF	KAKPO		040.34(039.59)	50.46					RNAV 1
100	TF	NM524		069.93(069.18)	41.28					RNAV 1
110	TF	NONEN		069.41(068.66)	48.22					RNAV 1

RNAV1 SIDs RWY 26 – AAU 1E, KAKPO 1E, MELAX 1E, NONEN 1E

TABULAR DESCRIPTION

SID BEKUT 1E - RWY 26											
Serial Number	Path Descriptor	Waypoint Identifier	Fly-Over	Course °M(°T)	Distance (NM)	Turn Direction	Altitude (ft)	Speed Limit (Kt)	VPA (%)	Navigation Specification	
10	VA			263.12(262.37)			+650	-250.00	7	RNAV 1	
20	DF	NM541	Y				+2000	-250.00	7	RNAV 1	
30	CF	NM550		244.10(243.35)			+3000	-250.00		RNAV 1	
40	TF	NM552		173.09(172.34)	15.63		-FL080			RNAV 1	
50	TF	NM506		169.34(168.59)	20.58		-FL100			RNAV 1	
60	TF	NM553		169.37(168.62)	13.92		-FL130			RNAV 1	
	TF	BEKUT		148.92(148.17)	25.65		@FL240			RNAV 1	

SID DARMI 1E - RWY 26											
Serial Number	Path Descriptor	Waypoint Identifier	Fly-Over	Course °M(°T)	Distance (NM)	Turn Direction	Altitude (ft)	Speed Limit (Kt)	VPA (%)	Navigation Specification	
10	VA			263.12(262.37)			+650	-250.00	7	RNAV 1	
20	DF	NM541	Y				+2000	-250.00	7	RNAV 1	
30	CF	NM550		244.10(243.35)			+3000	-250.00		RNAV 1	
40	TF	NM552		173.09(172.34)	15.63		-FL080			RNAV 1	
50	TF	NM506		169.34(168.59)	20.58		-FL100			RNAV 1	
60	TF	NM554		256.38(255.63)	11.93		-FL100			RNAV 1	
70	TF	NM555		256.16(255.41)	17.65		-FL120			RNAV 1	
80	TF	NM508		255.88(255.13)	17.69		-FL180			RNAV 1	
90	TF	NM510		259.07(258.32)	13.98		@FL210			RNAV 1	
100	TF	DARMI		258.74(257.99)	77.03					RNAV 1	

SID GUNDI 1E - RWY 26											
Serial Number	Path Descriptor	Waypoint Identifier	Fly-Over	Course °M(°T)	Distance (NM)	Turn Direction	Altitude (ft)	Speed Limit (Kt)	VPA (%)	Navigation Specification	
10	VA			263.12(262.37)			+650	-250.00	7	RNAV 1	
20	DF	NM541	Y				+2000	-250.00	7	RNAV 1	
30	CF	NM550		244.10(243.35)			+3000	-250.00		RNAV 1	
40	TF	NM552		173.09(172.34)	15.63		-FL080			RNAV 1	
50	TF	NM506		169.34(168.59)	20.58		-FL100			RNAV 1	
60	TF	NM554		256.38(255.63)	11.93		-FL100			RNAV 1	
70	TF	NM555		256.16(255.41)	17.65		-FL120			RNAV 1	
80	TF	NM508		255.88(255.13)	17.69		-FL180			RNAV 1	
90	TF	NM509		219.92(219.17)	24.39		@FL210			RNAV 1	
100	TF	GUNDI		219.85(219.10)	33.72					RNAV 1	

RNAV1 SID RWY 26 – BEKUT 1E, DARMI 1E, GUNDI 1E, EPKOS 1E, ERVIS 1E, MABTA 1E, PPN 1E

SID EPKOS 1E - RWY 26										
Serial Number	Path Descriptor	Waypoint Identifier	Fly-Over	Course °M(°T)	Distance (NM)	Turn Direction	Altitude (ft)	Speed Limit (Kt)	VPA (%)	Navigation Specification
10	VA			263.12(262.37)			+650	-250.00	7	RNAV 1
20	DF	NM541	Y				+2000	-250.00	7	RNAV 1
30	CF	NM550		244.10(243.35)			+3000	-250.00		RNAV 1
40	TF	NM552		173.09(172.34)	15.63		-FL080			RNAV 1
50	TF	NM506		169.34(168.59)	20.58		-FL100			RNAV 1
60	TF	NM553		169.37(168.62)	13.92		-FL130			RNAV 1
70	TF	BEKUT		148.92(148.17)	25.65		@FL240			RNAV 1
80	TF	EPKOS		134.62(133.87)	72.00					RNAV 1

SID ERVIS 1E - RWY 26										
Serial Number	Path Descriptor	Waypoint Identifier	Fly-Over	Course °M(°T)	Distance (NM)	Turn Direction	Altitude (ft)	Speed Limit (Kt)	VPA (%)	Navigation Specification
10	VA			263.12(262.37)			+650	-250.00	7	RNAV 1
20	DF	NM541	Y				+2000	-250.00	7	RNAV 1
30	CF	NM550		244.10(243.35)			+3000	-250.00		RNAV 1
40	TF	NM552		173.09(172.34)	15.63		-FL080			RNAV 1
50	TF	NM506		169.34(168.59)	20.58		-FL100			RNAV 1
60	TF	NM554		256.38(255.63)	11.93		-FL100			RNAV 1
70	TF	NM555		256.16(255.41)	17.65		-FL120			RNAV 1
80	TF	NM508		255.88(255.13)	17.69		-FL180			RNAV 1
90	TF	NM509		219.92(219.17)	24.39		@FL210			RNAV 1
100	TF	ERVIS		166.27(165.52)	43.66					RNAV 1

SID MABTA 1E - RWY 26										
Serial Number	Path Descriptor	Waypoint Identifier	Fly-Over	Course °M(°T)	Distance (NM)	Turn Direction	Altitude (ft)	Speed Limit (Kt)	VPA (%)	Navigation Specification
10	VA			263.12(262.37)			+650	-250.00	7	RNAV 1
20	DF	NM541	Y				+2000	-250.00	7	RNAV 1
30	CF	NM550		244.10(243.35)			+3000	-250.00		RNAV 1
40	TF	NM552		173.09(172.34)	15.63		-FL080			RNAV 1
50	TF	NM506		169.34(168.59)	20.58		-FL100			RNAV 1
60	TF	NM553		169.37(168.62)	13.92		-FL130			RNAV 1
70	TF	BEKUT		148.92(148.17)	25.65		@FL240			RNAV 1
80	TF	MABTA		167.29(166.54)	35.71					RNAV 1

SID PPN 1E - RWY 26										
Serial Number	Path Descriptor	Waypoint Identifier	Fly-Over	Course °M(°T)	Distance (NM)	Turn Direction	Altitude (ft)	Speed Limit (Kt)	VPA (%)	Navigation Specification
10	VA			263.12(262.37)			+650	-250.00	7	RNAV 1
20	DF	NM541	Y				+2000	-250.00	7	RNAV 1
30	CF	NM550		244.10(243.35)			+3000	-250.00		RNAV 1
40	TF	NM556		158.15(157.40)	10.97		-FL080			RNAV 1
50	TF	NM557		083.08(082.33)	6.26		-FL100 +FL080			RNAV 1
60	TF	NM503		082.96(082.21)	7.32		-FL130 +FL120			RNAV 1
70	TF	DOGAP		083.02(082.27)	15.46		-FL150			RNAV 1
80	TF	PPN		116.10(115.35)	31.27		-FL190			RNAV 1

RNAV1 SID RWY 26 – BEKUT 1E, DARMI 1E, GUNDI 1E, EPKOS 1E, ERVIS 1E, MABTA 1E, PPN 1E

STANDARD ARRIVAL CHART
INSTRUMENT (STAR)

RNAV1(GNSS)
SURVEILLANCE REQUIRED

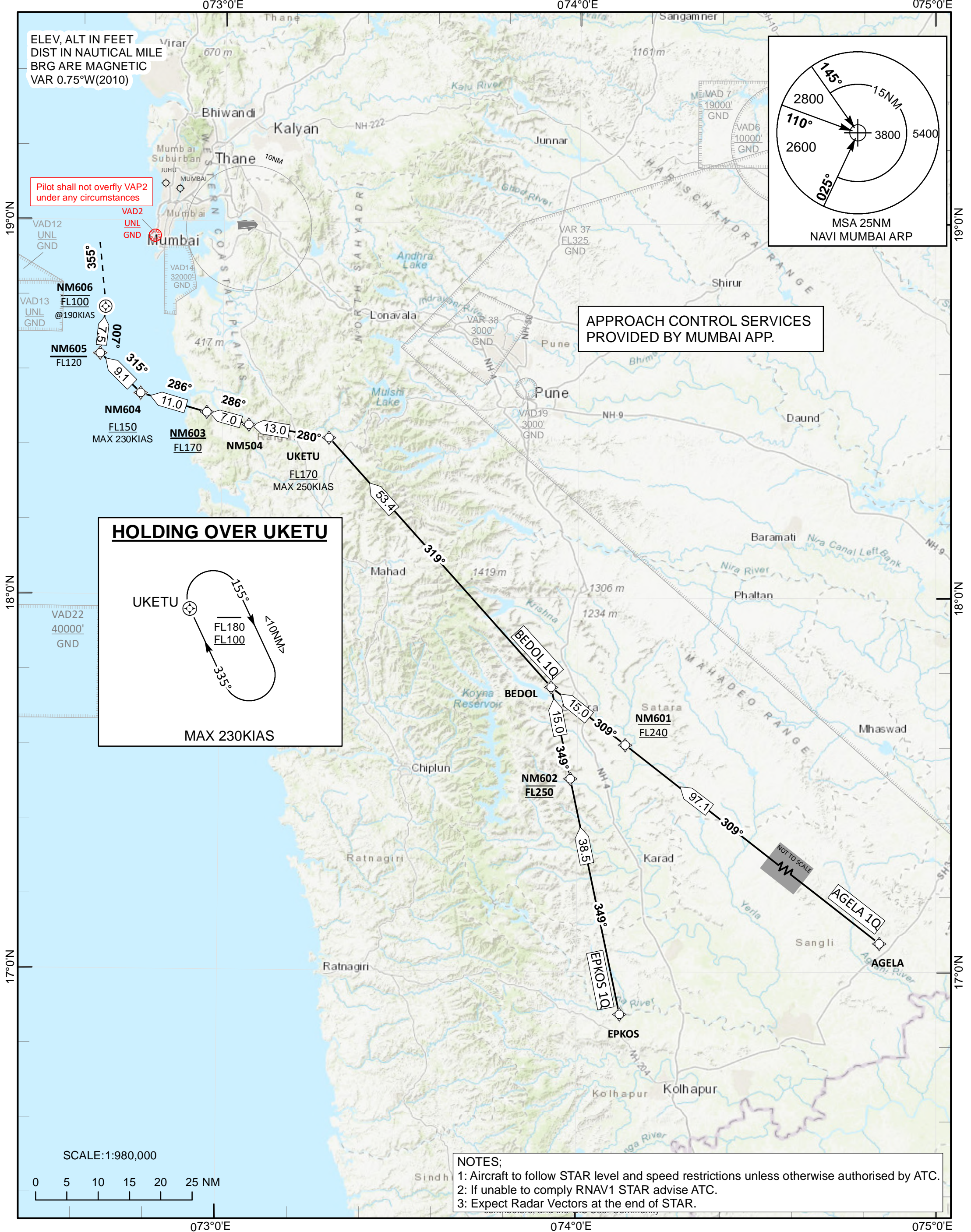
TRANSITION ALT
6000

132.700 ACC(N)
125.350 ACC(S)
133.300 ACC(W)
133.425 LAC(1)
133.850 LAC(2)

NAVI MUMBAI INTL (VANM)

NAVI TWR 119.000/119.775/118.275
MUMBAI APP 124.650/125.450/126.975
127.900/119.300/120.350

INDIA
AGELA 1Q, BEDOL 1Q,
EPKOS 1Q
RWY08



STANDARD ARRIVAL CHART
INSTRUMENT (STAR)

RNAV1(GNSS)
SURVEILLANCE REQUIRED

TRANSITION ALT
6000

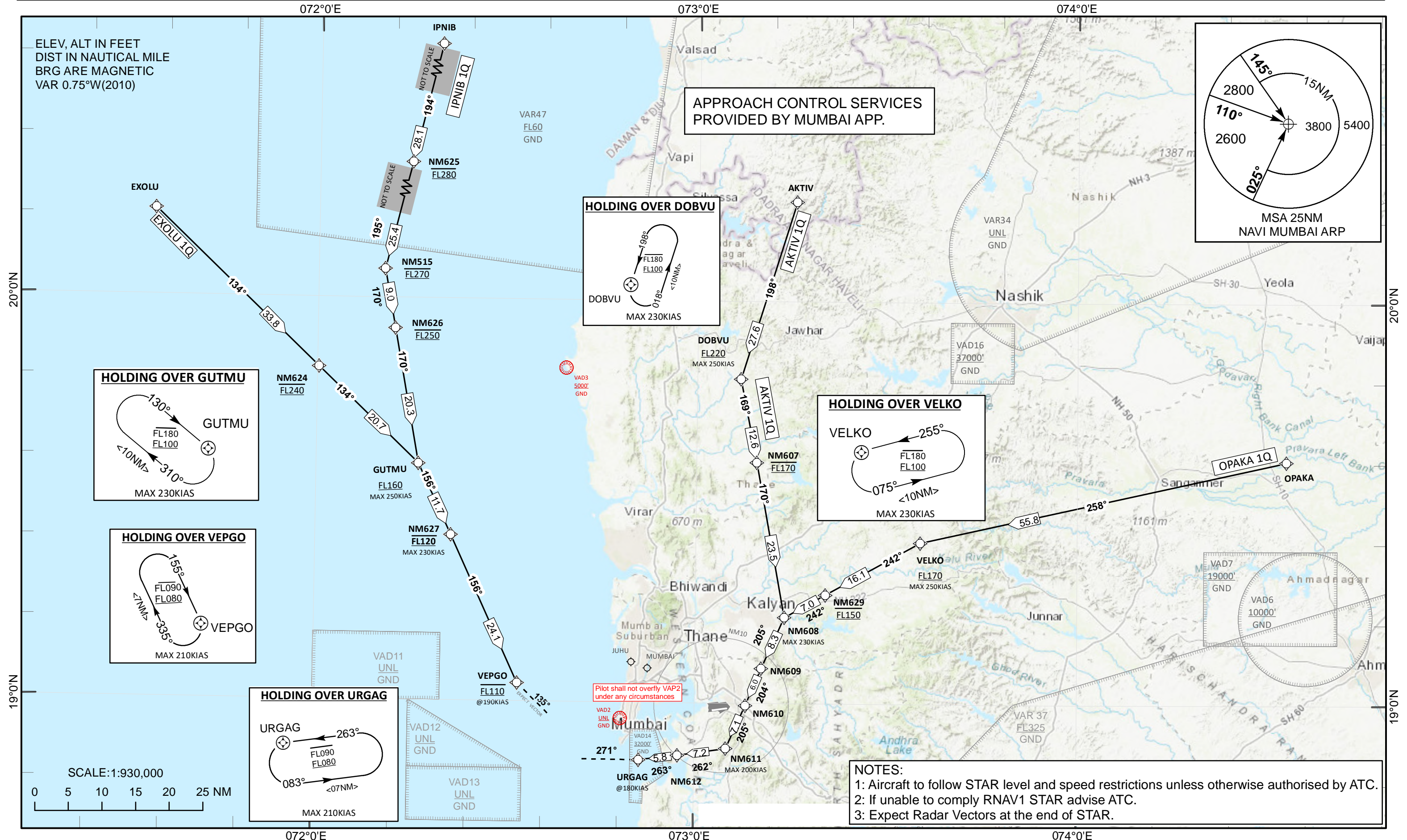
132.700 ACC(N)
125.350 ACC(S)
133.300 ACC(W)
133.425 LAC(1)
133.850 LAC(2)

NAVI TWR 119.000/ 119.775/118.275
MUMBAI APP 124.650/ 125.450/126.975
127.900/119.300/120.350

NAVI MUMBAI INTL(VANM)

INDIA
AKTIV 1Q, EXOLU 1Q
IPNIB 1Q, OPAKA 1Q

RWY 08



STANDARD ARRIVAL CHART
INSTRUMENT (STAR)
RNAV1(GNSS)
SURVEILLANCE REQUIRED

TRANSITION ALT
6000

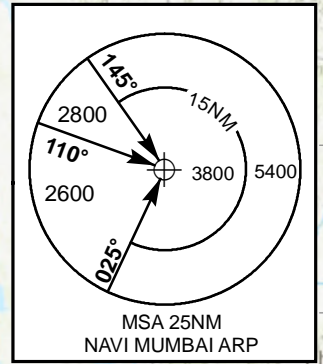
132.700 ACC(N)
125.350 ACC(S)
133.300 ACC(W)
133.425 LAC(1)
133.850 LAC(2)

NAVI TWR 119.000/ 119.775/118.275
MUMBAI APP 124.650/ 125.450/126.975
127.900/119.300/120.350

NAVI MUMBAI INTL(VANM)
INDIA
BISET 1Q, DARMI 1Q,
ERVIS 1Q, GUNDI 1Q,
KABSO 1Q, SUGID 1Q
RWY08

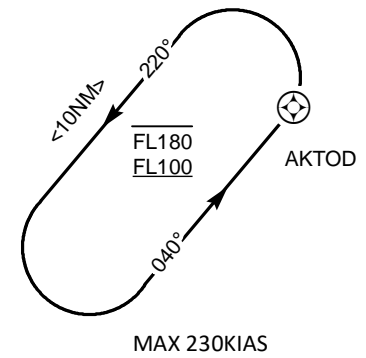
ELEV, ALT IN FEET
DIST IN NAUTICAL MILE
BRG ARE MAGNETIC
VAR 0.75°W(2010)

APPROACH CONTROL SERVICES
PROVIDED BY MUMBAI APP.



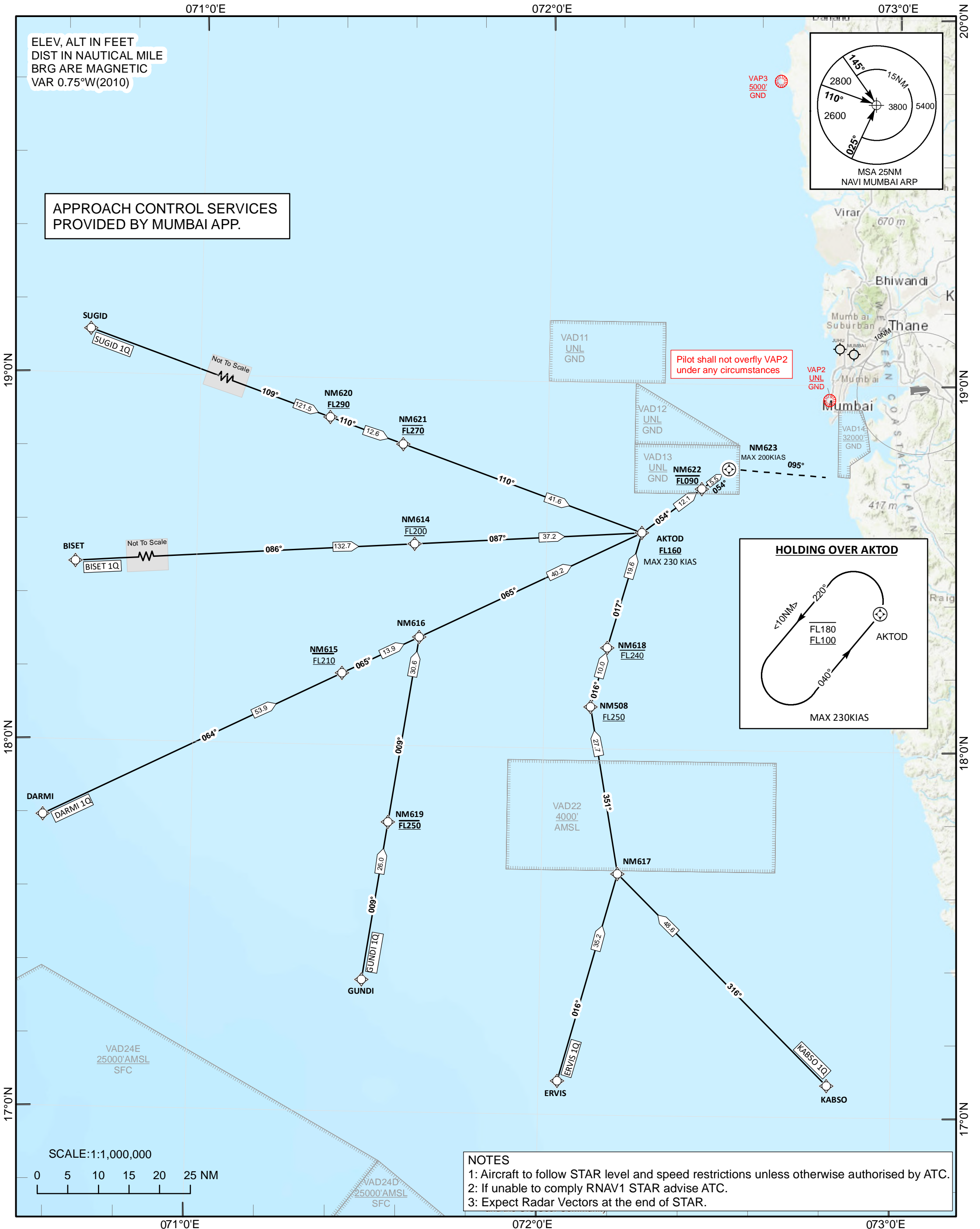
Pilot shall not overfly VAP2
under any circumstances

HOLDING OVER AKTOD



NOTES

- 1: Aircraft to follow STAR level and speed restrictions unless otherwise authorised by ATC.
- 2: If unable to comply RNAV1 STAR advise ATC.
- 3: Expect Radar Vectors at the end of STAR.



TABULAR DESCRIPTION

STAR AGELA 1Q RWY 08										
Serial Number	Path Descriptor	Waypoint Identifier	Fly-Over	Course °M(°T)	Distance (NM)	Turn Direction	Altitude(ft)	Speed Limit (Kt)	VPA (%)	Navigation Specification
10	IF	AGELA								RNAV 1
20	TF	NM601		308.93° (308.18°)	97.14		@FL240			RNAV 1
30	TF	BEDOL		308.54° (307.79°)	15.00		@FL240			RNAV 1
40	TF	UKETU		318.77° (318.02°)	53.40		+FL170	-250.00		RNAV 1
50	TF	NM504		279.63° (278.88°)	13.02					RNAV 1
60	TF	NM603		286.42° (285.67°)	7.00		@FL170			RNAV 1
70	TF	NM604		286.38° (285.63°)	10.99		+FL150	-230.00		RNAV 1
80	TF	NM605		314.77° (314.02°)	9.07		-FL120			RNAV 1
90	TF	NM606	Y	006.56° (005.81°)	7.52		@FL100	@190.00		RNAV 1
100	VM			355.00° (354.25°)						RNAV 1
10	HM	UKETU	Y	335.00°(334.25°)	10.00	R	-FL180 +FL100	-230.00		RNAV1

STAR BEDOL 1Q RWY 08										
Serial Number	Path Descriptor	Waypoint Identifier	Fly-Over	Course °M(°T)	Distance (NM)	Turn Direction	Altitude(ft)	Speed Limit (Kt)	VPA (%)	Navigation Specification
10	ITF	BEDOL								RNAV 1
20	TF	UKETU		318.77° (318.02°)	53.40		+FL170	-250.00		RNAV 1
30	TF	NM504		279.63° (278.88°)	13.02					RNAV 1
40	TF	NM603		286.42° (285.67°)	7.00		@FL170			RNAV 1
50	TF	NM604		286.38° (285.63°)	10.99		+FL150	-230.00		RNAV 1
60	TF	NM605		314.77° (314.02°)	9.07		-FL120			RNAV 1
70	TF	NM606	Y	006.56° (005.81°)	7.52		@FL100	@190.00		RNAV 1
80	VM			355.00° (354.25°)						RNAV 1
10	HM	UKETU	Y	335.00°(334.25°)	10.00	R	-FL180 +FL100	-230.00		RNAV1

STAR EPKOS 1Q RWY 08										
Serial Number	Path Descriptor	Waypoint Identifier	Fly-Over	Course °M(°T)	Distance (NM)	Turn Direction	Altitude(ft)	Speed Limit (Kt)	VPA (%)	Navigation Specification
10	IF	EPKOS								RNAV 1
20	TF	NM602		348.77° (348.02°)	38.48		@FL250			RNAV 1
30	TF	BEDOL		348.73° (347.98°)	15.00		@FL250			RNAV 1
40	TF	UKETU		318.77° (318.02°)	53.40		+FL170	-250.00		RNAV 1
50	TF	NM504		279.63° (278.88°)	13.02					RNAV 1
60	TF	NM603		286.42° (285.67°)	7.00		@FL170			RNAV 1
70	TF	NM604		286.38° (285.63°)	10.99		+FL150	-230.00		RNAV 1
80	TF	NM605		314.77° (314.02°)	9.07		-FL120			RNAV 1
90	TF	NM606	Y	006.56° (005.81°)	7.52		@FL100	@190.00		RNAV 1
100	VM			355.00° (354.25°)						RNAV 1
10	HM	UKETU	Y	335.00°(334.25°)	10.00	R	-FL180 +FL100	-230.00		RNAV1

RNAV 1 (GNSS) STARs RWY 08 – AGELA 1Q, BEDOL 1Q, EPKOS 1Q

TABULAR DESCRIPTION

STAR AKTIV 1Q RWY 08										
Serial Number	Path Descriptor	Waypoint Identifier	Fly-Over	Course °M(°T)	Distance (NM)	Turn Direction	Altitude(ft)	Speed Limit (Kt)	VPA (%)	Navigation Specification
10	IF	AKTIV								RNAV 1
20	TF	DOBVU		197.88° (197.13°)	27.60		+FL220	-250.00		RNAV 1
30	TF	NM607		169.49° (168.74°)	12.59		@FL170			RNAV 1
40	TF	NM608		170.21° (169.46°)	23.46		@FL160	-230.00		RNAV 1
50	TF	NM609		204.65° (203.90°)	8.31		@FL150			RNAV 1
60	TF	NM610		203.50° (202.75°)	5.98					RNAV 1
70	TF	NM611		204.81° (204.06°)	7.05		+FL130	-200.00		RNAV 1
80	TF	NM612		262.48° (261.73°)	7.23		@FL110			RNAV 1
90	TF	URGAG		263.44° (262.69°)	5.83		@FL090	@180.00		RNAV 1
100	VM			270.75° (270.00°)						RNAV 1
10	HM	DOBVU	Y	198.00°(197.25°)	10.00	L	-FL180 +FL100	-230.00		RNAV 1
10	HM	URGAG	Y	263.00°(262.25°)	7.00	L	-FL090 +FL080	-210.00		RNAV1

STAR EXOLU 1Q RWY 08										
Serial Number	Path Descriptor	Waypoint Identifier	Fly-Over	Course °M(°T)	Distance (NM)	Turn Direction	Altitude(ft)	Speed Limit (Kt)	VPA (%)	Navigation Specification
10	IF	EXOLU								RNAV 1
20	TF	NM624		133.98° (133.23°)	33.76		@FL240			RNAV 1
30	TF	GUTMU		134.23° (133.48°)	20.67		+FL160	-250.00		RNAV 1
40	TF	NM627		155.54° (154.79°)	11.67		@FL120	-230.00		RNAV 1
50	TF	VEPGO		155.87° (155.12°)	24.14		@FL110	@190.00		RNAV 1
60	VM			135.00° (134.25°)						RNAV 1
10	HM	GUTMU	Y	130.00°(129.25°)	10.00	R	-FL180 +FL100	-230.00		RNAV1
10	HM	VEPGO	Y	155.00°(154.25°)	7.00	R	-FL090 +FL080	-210.00		RNAV1

STAR IPNIB 1Q RWY 08										
Serial Number	Path Descriptor	Waypoint Identifier	Fly-Over	Course °M(°T)	Distance (NM)	Turn Direction	Altitude(ft)	Speed Limit (Kt)	VPA (%)	Navigation Specification
10	IF	IPNIB								RNAV 1
20	TF	NM625		194.37° (193.62°)	28.12		@FL280			RNAV 1
30	TF	NM515		194.59° (193.84°)	25.42		@FL270			RNAV 1
40	TF	NM626		170.28° (169.53°)	9.00		@FL250			RNAV 1
50	TF	GUTMU		170.29° (169.54°)	20.34		+FL160	-250.00		RNAV 1
60	TF	NM627		155.54° (154.79°)	11.67		@FL120	-230.00		RNAV 1
70	TF	VEPGO		155.87° (155.12°)	24.14		@FL110	@190.00		RNAV 1
80	VM			135.00° (134.25°)						RNAV 1
10	HM	GUTMU	Y	130.00°(129.25°)	10.00	R	-FL180 +FL100	-230.00		RNAV1
10	HM	VEPGO	Y	155.00°(154.25°)	7.00	R	-FL090 +FL080	-210.00		RNAV1

RNAV 1 (GNSS) STAR RWY 08 – AKTIV 1Q, AKTIV 1V, EXOLU 1Q, IPNIB 1Q, OPAKA 1Q

STAR OPAKA 1Q RWY 08

Serial Number	Path Descriptor	Waypoint Identifier	Fly-Over	Course °M(°T)	Distance (NM)	Turn Direction	Altitude(ft)	Speed Limit (Kt)	VPA (%)	Navigation Specification
10	IF	OPAKA								RNAV 1
20	TF	VELKO		258.34° (257.59°)	55.83		+FL170	-250.00		RNAV 1
30	TF	NM629		241.59° (240.84°)	16.05		@FL150			RNAV 1
40	TF	NM608		241.51° (240.76°)	7.00		-FL130	-230.00		RNAV 1
50	TF	NM609		204.65° (203.90°)	8.31		-FL120			RNAV 1
60	TF	NM610		203.50° (202.75°)	5.98		@FL110			RNAV 1
70	TF	NM611		204.81° (204.06°)	7.05		@FL090	-200.00		RNAV 1
80	TF	NM612		262.48° (261.73°)	7.23		@FL080			RNAV 1
90	TF	URGAG		263.44° (262.69°)	5.83			@180.00		RNAV 1
100	VM			270.75° (270.00°)						RNAV 1
10	HM	URGAG	Y	263.00°(262.25°)	7.00	L	-FL090 +FL080	-210.00		RNAV1
10	HM	VELKO	Y	255.00°(254.25°)	10.00	L	-FL180 +FL100	-230.00		RNAV1

RNAV 1 (GNSS) STAR RWY 08 – AKTIV 1Q, AKTIV 1V, EXOLU 1Q, IPNIB 1Q, OPAKA 1Q

TABULAR DESCRIPTION

STAR BISET 1Q RWY 08										
Serial Number	Path Descriptor	Waypoint Identifier	Fly-Over	Course °M(°T)	Distance (NM)	Turn Direction	Altitude(ft)	Speed Limit (Kt)	VPA (%)	Navigation Specification
10	IF	BISET								RNAV 1
20	TF	NM614		086.19° (085.44°)	132.73		@FL200			RNAV 1
30	TF	AKTOD		086.92° (086.17°)	37.15		+FL160	-230.00		RNAV 1
40	TF	NM622		053.59° (052.84°)	12.09		@FL090			RNAV 1
50	TF	NM623	Y	053.65° (052.90°)	5.50			-200.00		RNAV 1
60	VM			095.00° (094.25°)						RNAV 1
10	HM	AKTOD	Y	040.00°(039.25°)	10.00	L	-FL180 +FL100	-230.00		RNAV1

STAR DARMI 1Q RWY 08										
Serial Number	Path Descriptor	Waypoint Identifier	Fly-Over	Course °M(°T)	Distance (NM)	Turn Direction	Altitude(ft)	Speed Limit (Kt)	VPA (%)	Navigation Specification
10	IF	DARMI								RNAV 1
20	TF	NM615		064.24° (063.49°)	53.89		@FL210			RNAV 1
30	TF	NM616		064.81° (064.06°)	13.91		@FL210			RNAV 1
40	TF	AKTOD		064.63° (063.88°)	40.16		+FL160	-230.00		RNAV 1
50	TF	NM622		053.59° (052.84°)	12.09		@FL090			RNAV 1
60	TF	NM623	Y	053.65° (052.90°)	5.5			-200.00		RNAV 1
70	VM			095.00° (094.25°)						RNAV 1
10	HM	AKTOD	Y	040.00°(039.25°)	10.00	L	-FL180 +FL100	-230.00		RNAV1

STAR ERVIS 1Q RWY 08										
Serial Number	Path Descriptor	Waypoint Identifier	Fly-Over	Course °M(°T)	Distance (NM)	Turn Direction	Altitude(ft)	Speed Limit (Kt)	VPA (%)	Navigation Specification
10	IF	ERVIS								RNAV 1
20	TF	NM617		16.15° (015.40°)	35.23		@FL270			RNAV 1
30	TF	NM508		350.74° (349.99°)	27.66		+FL250			RNAV 1
40	TF	NM618		015.90° (015.15°)	10.00		@FL240			RNAV 1
50	TF	AKTOD		016.70° (015.95°)	19.61		+FL160	-230.00		RNAV 1
60	TF	NM622		053.59° (052.84°)	12.09		@FL090			RNAV 1
70	TF	NM623	Y	053.65° (052.90°)	5.50			-200.00		RNAV 1
	VM			095.00° (094.25°)						
10	HM	AKTOD	Y	040.00°(039.25°)	10.00	L	-FL180 +FL100	-230.00		RNAV1

STAR GUNDI 1Q RWY 08										
Serial Number	Path Descriptor	Waypoint Identifier	Fly-Over	Course °M(°T)	Distance (NM)	Turn Direction	Altitude(ft)	Speed Limit (Kt)	VPA (%)	Navigation Specification
10	IF	GUNDI								RNAV 1
20	TF	NM619		009.29° (008.54°)	26.02		@FL250			RNAV 1
30	TF	NM616		009.31° (008.56°)	30.62		@FL250			RNAV 1
40	TF	AKTOD		064.63° (063.88°)	40.16		+FL160	-230.00		RNAV 1
50	TF	NM622		053.59° (052.84°)	12.09		@FL090			RNAV 1
60	TF	NM623	Y	053.65° (052.90°)	5.50			-200.00		RNAV 1
70	VM			095.00° (094.25°)						RNAV 1
10	HM	AKTOD	Y	040.00°(039.25°)	10.00	L	-FL180 +FL100	-230.00		RNAV1

RNAV 1 (GNSS) STARs RWY 08 – BISET 1Q, DARMI 1Q, ERVIS 1Q, GUNDI 1Q, KABSO 1Q, SUGID 1Q

STAR KABSO 1Q RWY 08

Serial Number	Path Descriptor	Waypoint Identifier	Fly-Over	Course °M(°T)	Distance (NM)	Turn Direction	Altitude(ft)	Speed Limit (Kt)	VPA (%)	Navigation Specification
10	IF	KABSO								RNAV 1
20	TF	NM617		315.52° (314.77°)	48.6		@FL290			RNAV 1
30	TF	NM508		350.74° (349.99°)	27.66		+FL250			RNAV 1
40	TF	NM618		015.90° (015.15°)	10.00		@FL240			RNAV 1
50	TF	AKTOD		016.70° (015.95°)	19.61		+FL160	-230.00		RNAV 1
60	TF	NM622		053.59° (052.84°)	12.09		@FL090			RNAV 1
70	TF	NM623	Y	053.65° (052.90°)	5.50			-200.00		RNAV 1
80	VM			095.00° (094.25°)						
10	HM	AKTOD	Y	040.00°(039.25°)	10.00	L	-FL180 +FL100	-230.00		RNAV1

STAR SUGID 1Q RWY 08

Serial Number	Path Descriptor	Waypoint Identifier	Fly-Over	Course °M(°T)	Distance (NM)	Turn Direction	Altitude(ft)	Speed Limit (Kt)	VPA (%)	Navigation Specification
10	IF	SUGID								RNAV 1
20	TF	NM620		109.30° (108.55°)	121.51		+FL290			RNAV 1
30	TF	NM621		109.97° (109.22°)	12.63		@FL270			RNAV 1
40	TF	AKTOD		110.03° (109.28°)	41.61		+FL160	-230.00		RNAV 1
50	TF	NM622		053.59° (052.84°)	12.09		@FL090			RNAV 1
60	TF	NM623	Y	053.65° (052.90°)	5.50			-200.00		RNAV 1
70	VM			095.00° (094.25°)						RNAV 1
10	HM	AKTOD	Y	040.00°(039.25°)	10.00	L	-FL180 +FL100	-230.00		RNAV1

STANDARD ARRIVAL CHART
INSTRUMENT (STAR)

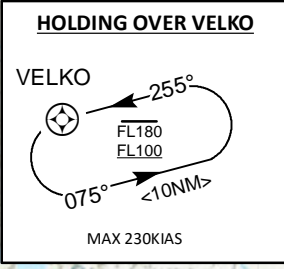
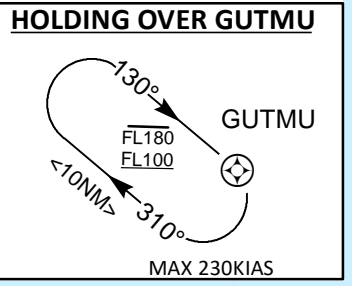
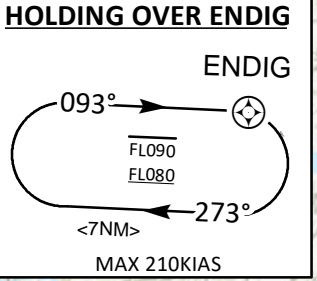
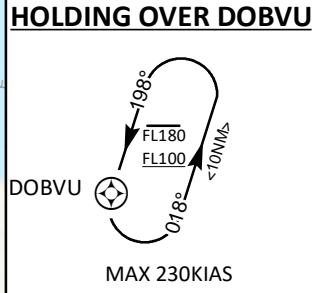
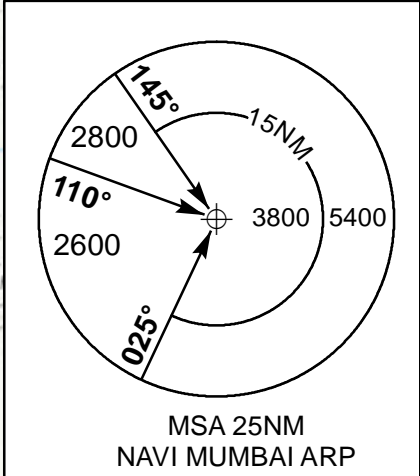
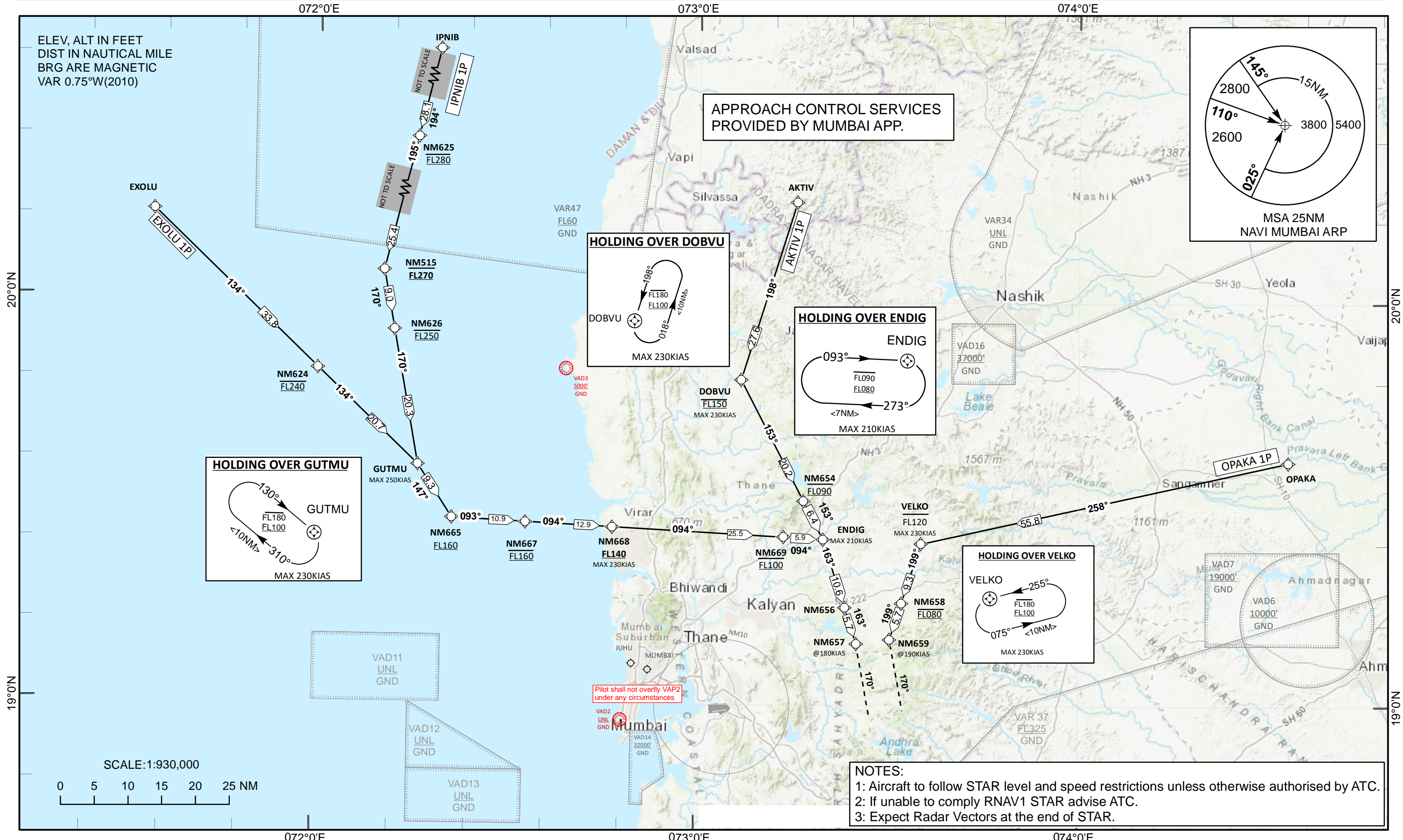
RNAV1(GNSS)
SURVEILLANCE REQUIRED

TRANSITION ALT
6000

132.700 ACC(N)
125.350 ACC(S)
133.300 ACC(W)
133.425 LAC(1)
133.850 LAC(2)

NAVI TWR 119.000/ 119.775/118.275
MUMBAI APP 124.650/ 125.450/126.975
127.900/119.300/120.350

NAVI MUMBAI INTL(VANM)
INDIA
AKTIV 1P, EXOLU 1P
IPNIB 1P, OPAKA 1P
RWY 26



NOTES:
1: Aircraft to follow STAR level and speed restrictions unless otherwise authorised by ATC.
2: If unable to comply RNAV1 STAR advise ATC.
3: Expect Radar Vectors at the end of STAR.

STANDARD ARRIVAL CHART
INSTRUMENT (STAR)

RNAV1(GNSS)
SURVEILLANCE REQUIRED

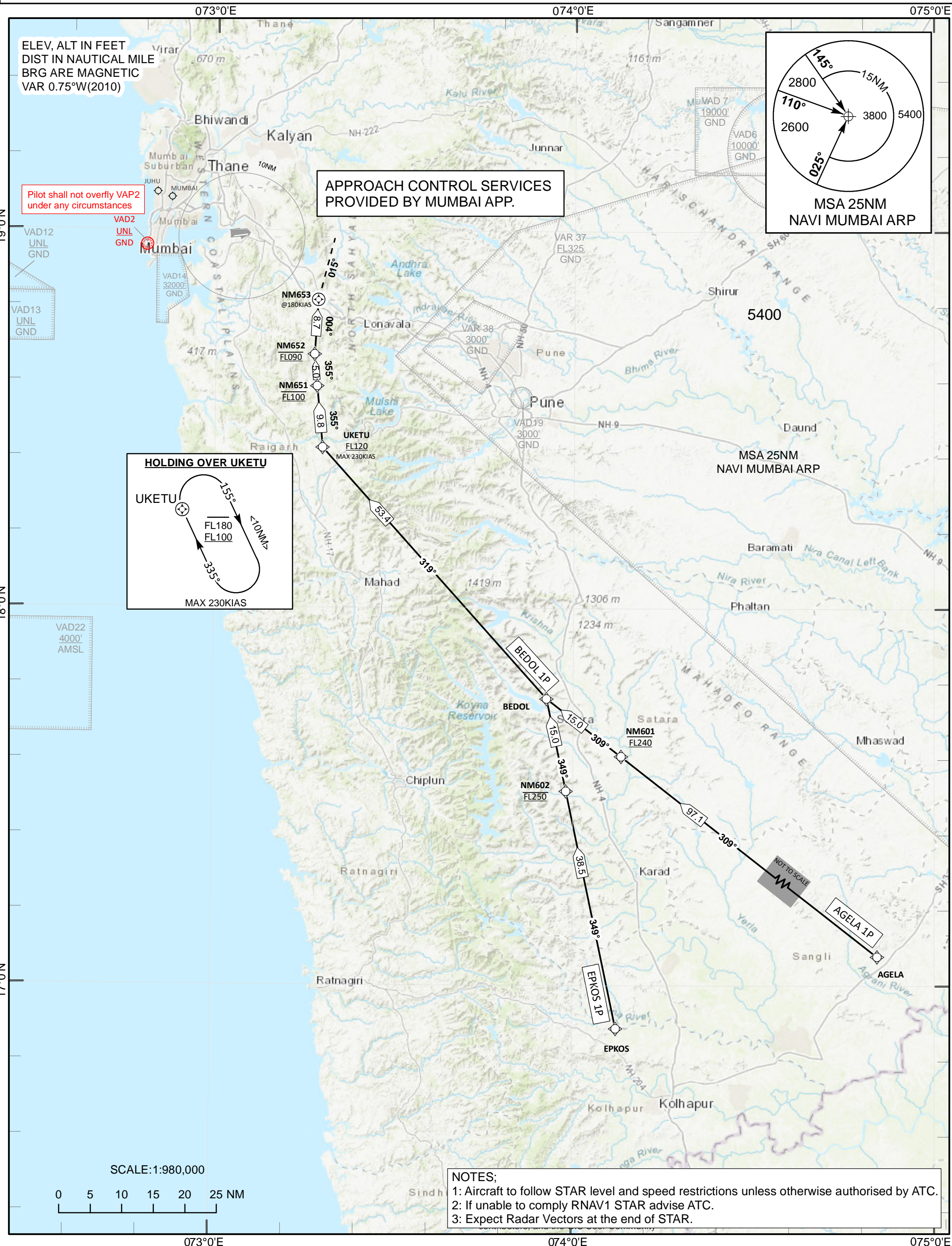
TRANSITION ALT
6000

132.700 ACC(N)
125.350 ACC(S)
133.300 ACC(W)
133.425 LAC(1)
133.850 LAC(2)

NAVI TWR 119.000/ 119.775/118.275
MUMBAI APP 124.650/ 125.450/126.975
127.900/119.300/120.350

NAVI MUMBAI INTL (VANM)

INDIA
AGELA 1P, BEDOL 1P,
EPKOS 1P
RWY26



STANDARD ARRIVAL CHART
INSTRUMENT (STAR)

RNAV1(GNSS)
SURVEILLANCE REQUIRED

TRANSITION ALT
6000

132.700 ACC(N)
125.350 ACC(S)
133.300 ACC(W)
133.425 LAC(1)
133.850 LAC(2)

NAVI TWR 119.000/ 119.775/118.275
MUMBAI APP 124.650/ 125.450/126.975
127.900/119.300/120.350

NAVI MUMBAI INTL(VANM)

INDIA

BISET 1P, DARMI 1P,
ERVIS 1P, GUNDI 1P,
KABSO 1P, SUGID 1P

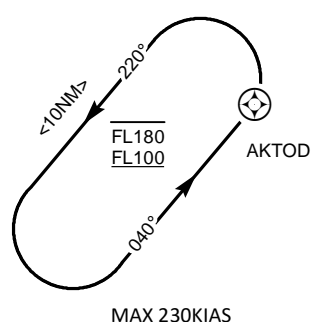
RWY26

ELEV, ALT IN FEET
DIST IN NAUTICAL MILE
BRG ARE MAGNETIC
VAR 0.75°W(2010)

APPROACH CONTROL SERVICES
PROVIDED BY MUMBAI APP.

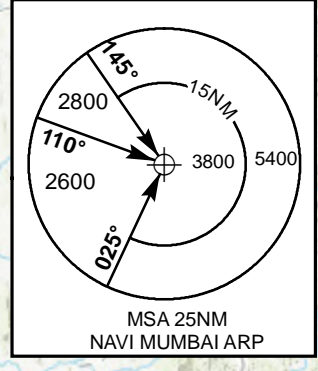
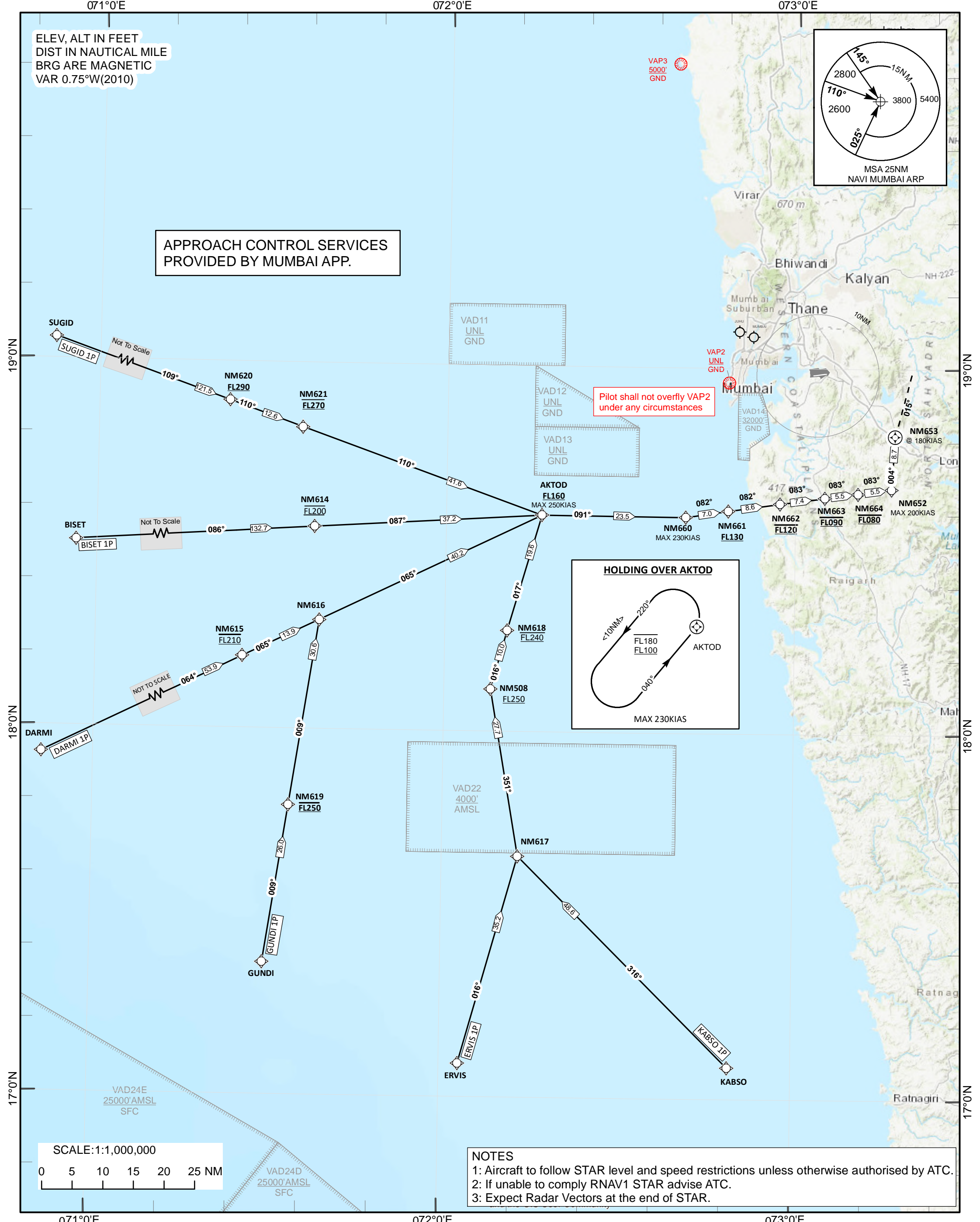
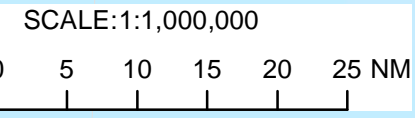
Pilot shall not overfly VAP2
under any circumstances

HOLDING OVER AKTOD



NOTES

- 1: Aircraft to follow STAR level and speed restrictions unless otherwise authorised by ATC.
- 2: If unable to comply RNAV1 STAR advise ATC.
- 3: Expect Radar Vectors at the end of STAR.



TABULAR DESCRIPTION

STAR AGELA 1P RWY 26										
Serial Number	Path Descriptor	Waypoint Identifier	Fly-Over	Course °M(°T)	Distance (NM)	Turn Direction	Altitude (ft)	Speed Limit (Kt)	VPA (%)	Navigation Specification
10	IF	AGELA								RNAV 1
20	TF	NM601		308.93°(308.18°)	97.14		@FL240			RNAV 1
30	TF	BEDOL		308.54°(307.79°)	15.00		@FL240			RNAV 1
40	TF	UKETU		318.77°(318.02°)	53.40		+FL120	-230.00		RNAV 1
50	TF	NM651		355.24°(354.49°)	9.83		@FL100			RNAV 1
60	TF	NM652		355.24°(354.49°)	5.00		@FL090			RNAV 1
70	TF	NM653	Y	004.34°(003.59°)	8.68			@180.00		RNAV 1
80	VM			015.00°(014.25°)						RNAV 1
10	HM	UKETU	Y	335.00°(334.25°)	10.00	R	-FL180 +FL100	-230.00		RNAV1

STAR BEDOL 1P RWY 26										
Serial Number	Path Descriptor	Waypoint Identifier	Fly-Over	Course °M(°T)	Distance (NM)	Turn Direction	Altitude (ft)	Speed Limit (Kt)	VPA (%)	Navigation Specification
10	IF	BEDOL								RNAV 1
20	TF	UKETU		318.77°(318.02°)	53.40		+FL120	-230.00		RNAV 1
30	TF	NM651		355.24°(354.49°)	9.83		@FL100			RNAV 1
40	TF	NM652		355.24°(354.49°)	5.00		@FL090			RNAV 1
50	TF	NM653	Y	004.34°(003.59°)	8.68			@180.00		RNAV 1
60	VM			015.00°(014.25°)						RNAV 1
10	HM	UKETU	Y	335.00°(334.25°)	10.00	R	-FL180 +FL100	-230.00		RNAV1

STAR EPKOS 1P RWY 26										
Serial Number	Path Descriptor	Waypoint Identifier	Fly-Over	Course °M(°T)	Distance (NM)	Turn Direction	Altitude (ft)	Speed Limit (Kt)	VPA (%)	Navigation Specification
10	IF	EPKOS								RNAV 1
20	TF	NM602		348.77°(348.02°)	38.48		@FL250			RNAV 1
30	TF	BEDOL		348.73°(347.98°)	15.00		@FL250			RNAV 1
40	TF	UKETU		318.77°(318.02°)	53.40		+FL120	-230.00		RNAV 1
50	TF	NM651		355.24°(354.49°)	9.83		@FL100			RNAV 1
60	TF	NM652		355.24°(354.49°)	5.00		@FL090			RNAV 1
70	TF	NM653	Y	004.34°(003.59°)	8.68			@180.00		RNAV 1
80	VM			015.00°(014.25°)						RNAV 1
10	HM	UKETU	Y	335.00°(334.25°)	10.00	R	-FL180 +FL100	-230.00		RNAV1

RNAV1 (GNSS) STAR RWY 26 -AGELA 1P, BEDOL 1P, EPKOS 1P

TABULAR DESCRIPTION

STAR AKTIV 1P RWY 26										
Serial Number	Path Descriptor	Waypoint Identifier	Fly-Over	Course °M(°T)	Distance (NM)	Turn Direction	Altitude (ft)	Speed Limit (Kt)	VPA (%)	Navigation Specification
10	IF	AKTIV								RNAV 1
20	TF	DOBVU		197.88°(197.13°)	27.60		@FL150	-230.00		RNAV 1
30	TF	NM654		153.18°(152.43°)	20.21		@FL090			RNAV 1
40	TF	ENDIG		153.35°(152.60°)	6.44			-210.00		RNAV 1
50	TF	NM656		162.70°(161.95°)	10.56					RNAV 1
60	TF	NM657		162.72°(161.97°)	5.65			@180.00		RNAV 1
70	VM			170.00°(169.25°)						RNAV 1
10	HM	DOBVU	Y	198.00°(197.25°)	10.00	L	-FL180 +FL100	-230.00		RNAV 1
10	HM	ENDIG	Y	093.00°(092.25°)	7.00	R	-FL090 +FL080	-210.00		RNAV1

STAR EXOLU 1P RWY 26										
Serial Number	Path Descriptor	Waypoint Identifier	Fly-Over	Course °M(°T)	Distance (NM)	Turn Direction	Altitude (ft)	Speed Limit (Kt)	VPA (%)	Navigation Specification
10	IF	EXOLU								RNAV 1
20	TF	NM624		133.98°(133.23°)	33.76		@FL240			RNAV 1
30	TF	GUTMU		134.23°(133.48°)	20.67			-250.00		RNAV 1
40	TF	NM665		147.36°(146.61°)	9.33		+FL160			RNAV 1
50	TF	NM667		093.49°(092.74°)	10.93		@FL160			RNAV 1
60	TF	NM668		093.53°(092.78°)	12.91		+FL140	-230.00		RNAV 1
70	TF	NM669		093.56°(092.81°)	25.47		@FL100			RNAV 1
80	TF	ENDIG		094.01°(093.26°)	5.88			-210.00		RNAV 1
90	TF	NM656		162.70°(161.95°)	10.56					RNAV 1
100	TF	NM657		162.72°(161.97°)	5.65			@180.00		RNAV 1
110	VM			170.00°(169.25°)						RNAV 1
10	HM	ENDIG	Y	093.00°(092.25°)	7.00	R	-FL090 +FL080	-210.00		RNAV1
10	HM	GUTMU	Y	130.00°(129.25°)	10.00	R	-FL180 +FL100	-230.00		RNAV1

STAR IPNIB 1P RWY 26										
Serial Number	Path Descriptor	Waypoint Identifier	Fly-Over	Course °M(°T)	Distance (NM)	Turn Direction	Altitude (ft)	Speed Limit (Kt)	VPA (%)	Navigation Specification
10	IF	IPNIB								RNAV 1
20	TF	NM625		194.37°(193.62°)	28.12		@FL280			RNAV 1
30	TF	NM515		194.59°(193.84°)	25.42		@FL270			RNAV 1
40	TF	NM626		170.28°(169.53°)	9.00		@FL250			RNAV 1
50	TF	GUTMU		170.29°(169.54°)	20.34			-250.00		RNAV 1
60	TF	NM665		147.36°(146.61°)	9.33		+FL160			RNAV 1
70	TF	NM667		093.49°(092.74°)	10.93		@FL160			RNAV 1
80	TF	NM668		093.53°(092.78°)	12.91		+FL140	-230.00		RNAV 1
90	TF	NM669		093.56°(092.81°)	25.47		@FL100			RNAV 1
100	TF	ENDIG		094.01°(093.26°)	5.88			-210.00		RNAV 1
110	TF	NM656		162.70°(161.95°)	10.56					RNAV 1
120	TF	NM657		162.72°(161.97°)	5.65			@180.00		RNAV 1
130	VM			170.00°(169.25°)						RNAV 1
10	HM	ENDIG	Y	093.00°(092.25°)	7.00	R	-FL090 +FL080	-210.00		RNAV1
10	HM	GUTMU	Y	130.00°(129.25°)	10.00	R	-FL180 +FL100	-230.00		RNAV1

RNAV1 (GNSS) STAR RWY 26 – AKTIV 1P, EXOLU 1P, IPNIB 1P, OPAKA 1P

STAR OPAKA 1P RWY 26

Serial Number	Path Descriptor	Waypoint Identifier	Fly-Over	Course °M(°T)	Distance (NM)	Turn Direction	Altitude (ft)	Speed Limit (Kt)	VPA (%)	Navigation Specification
10	IF	OPAKA								RNAV 1
20	TF	VELKO		258.34°(257.59°)	55.83		-FL120	-230.00		RNAV 1
30	TF	NM658		198.57°(197.82°)	9.26		@FL080			RNAV 1
40	TF	NM659		198.55°(197.80°)	5.69			@190.00		RNAV 1
50	VM			170.00°(169.25°)						RNAV 1
10	HM	VELKO	Y	255.00°(254.25°)	10.00	L	-FL180 +FL100	-230.00		RNAV1

RNAV1 (GNSS) STAR RWY 26 – AKTIV 1P, EXOLU 1P, IPNIB 1P, OPAKA 1P

TABULAR DESCRIPTION

STAR BISET 1P RWY 26										
Serial Number	Path Descriptor	Waypoint Identifier	Fly-Over	Course °M(°T)	Distance (NM)	Turn Direction	Altitude (ft)	Speed Limit (Kt)	VPA (%)	Navigation Specification
10	IF	BISET								RNAV 1
20	TF	NM614		086.19°(085.44°)	132.73		@FL200			RNAV 1
30	TF	AKTOD		086.92°(086.17°)	37.15		+FL160	-250.00		RNAV 1
40	TF	NM660		090.83°(090.08°)	23.51			-230.00		RNAV 1
50	TF	NM661		082.03°(081.28°)	7.00		+FL130			RNAV 1
60	TF	NM662		082.32°(081.57°)	8.57		@FL120			RNAV 1
70	TF	NM663		082.94°(082.19°)	7.35		@FL090			RNAV 1
80	TF	NM664		083.00°(082.25°)	5.50		@FL080			RNAV 1
90	TF	NM652		083.03°(082.28°)	5.50			-200.00		RNAV 1
100	TF	NM653	Y	004.34°(003.59°)	8.68			@180.00		RNAV 1
110	VM			015.00°(014.25°)						RNAV 1
10	HM	AKTOD	Y	040.00°(039.25°)	10.00	L	-FL180 +FL100	-230.00		RNAV1

STAR DARMI 1P RWY 26										
Serial Number	Path Descriptor	Waypoint Identifier	Fly-Over	Course °M(°T)	Distance (NM)	Turn Direction	Altitude (ft)	Speed Limit (Kt)	VPA (%)	Navigation Specification
10	IF	DARMI								RNAV 1
20	TF	NM615		064.24°(63.49°)	53.89		@FL210			RNAV 1
30	TF	NM616		064.81°(64.06°)	13.91		@FL210			RNAV 1
40	TF	AKTOD		064.63°(63.88°)	40.16		+FL160	-250.00		RNAV 1
50	TF	NM660		090.83°(090.08°)	23.51			-230.00		RNAV 1
60	TF	NM661		082.03°(081.28°)	7.00		+FL130			RNAV 1
70	TF	NM662		082.32°(081.57°)	8.57		@FL120			RNAV 1
80	TF	NM663		082.94°(082.19°)	7.35		@FL090			RNAV 1
90	TF	NM664		083.00°(082.25°)	5.50		@FL080			RNAV 1
100	TF	NM652		083.03°(082.28°)	5.50			-200.00		RNAV 1
110	TF	NM653	Y	004.34°(003.59°)	8.68			@180.00		RNAV 1
120	VM			015.00°(014.25°)						RNAV 1
10	HM	AKTOD	Y	040.00°(039.25°)	10.00	L	-FL180 +FL100	-230.00		RNAV1

STAR ERVIS 1P RWY 26										
Serial Number	Path Descriptor	Waypoint Identifier	Fly-Over	Course °M(°T)	Distance (NM)	Turn Direction	Altitude (ft)	Speed Limit (Kt)	VPA (%)	Navigation Specification
10	IF	ERVIS								RNAV 1
20	TF	NM617		016.15°(015.40°)	35.23		@FL280			RNAV 1
30	TF	NM508		350.74°(349.99°)	27.66		+FL250			RNAV 1
40	TF	NM618		015.90°(015.15°)	10.00		@FL240			RNAV 1
50	TF	AKTOD		016.70°(015.95°)	19.61		+FL160	-250.00		RNAV 1
60	TF	NM660		090.83°(090.08°)	23.51			-230.00		RNAV 1
70	TF	NM661		082.03°(081.28°)	7.00		+FL130			RNAV 1
80	TF	NM662		082.32°(081.57°)	8.57		@FL120			RNAV 1
90	TF	NM663		082.94°(082.19°)	7.35		@FL090			RNAV 1
100	TF	NM664		083.00°(082.25°)	5.50		@FL080			RNAV 1
110	TF	NM652		083.03°(082.28°)	5.50			-200.00		RNAV 1
120	TF	NM653	Y	004.34°(003.59°)	8.68			@180.00		RNAV 1
130	VM			015.00°(014.25°)						RNAV 1
10	HM	AKTOD	Y	040.00°(039.25°)	10.00	L	-FL180 +FL100	-230.00		RNAV1

RNAV1 (GNSS) STAR RWY 26 -BISET 1P, DARMI 1P, ERVIS 1P, GUNDI 1P, KABS0 1P, SUGID 1P

STAR GUNDI 1P RWY 26										
Serial Number	Path Descriptor	Waypoint Identifier	Fly-Over	Course °M(°T)	Distance (NM)	Turn Direction	Altitude (ft)	Speed Limit (Kt)	VPA (%)	Navigation Specification
10	IF	GUNDI								RNAV 1
20	TF	NM619		009.29°(008.54°)	26.02		@FL250			RNAV 1
30	TF	NM616		009.31°(008.56°)	30.62		@FL250			RNAV 1
40	TF	AKTOD		064.63°(063.88°)	40.16		+FL160	-250.00		RNAV 1
50	TF	NM660		090.83°(090.08°)	23.51			-230.00		RNAV 1
60	TF	NM661		082.03°(081.28°)	7.00		+FL130			RNAV 1
70	TF	NM662		082.32°(081.57°)	8.57		@FL120			RNAV 1
80	TF	NM663		082.94°(082.19°)	7.35		@FLO90			RNAV 1
90	TF	NM664		083.00°(082.25°)	5.50		@FLO80			RNAV 1
100	TF	NM652		083.03°(082.28°)	5.50			-200.00		RNAV 1
110	TF	NM653	Y	004.34°(003.59°)	8.68			@180.00		RNAV 1
120	VM			015.00°(014.25°)						RNAV 1
10	HM	AKTOD	Y	040.00°(039.25°)	10.00	L	-FL180 +FL100	-230.00		RNAV1

STAR KABSO 1P RWY 26										
Serial Number	Path Descriptor	Waypoint Identifier	Fly-Over	Course °M(°T)	Distance (NM)	Turn Direction	Altitude (ft)	Speed Limit (Kt)	VPA (%)	Navigation Specification
10	IF	KABSO								RNAV 1
20	TF	NM617		315.52°(314.77°)	48.60		@FL290			RNAV 1
30	TF	NM508		350.74°(349.99°)	27.66		+FL250			RNAV 1
40	TF	NM618		015.90°(015.15°)	10.00		@FL240			RNAV 1
50	TF	AKTOD		016.70°(015.95°)	19.61		+FL160	-250.00		RNAV 1
60	TF	NM660		090.83°(090.08°)	23.51			-230.00		RNAV 1
70	TF	NM661		082.03°(081.28°)	7.00		+FL130			RNAV 1
80	TF	NM662		082.32°(081.57°)	8.57		@FL120			RNAV 1
90	TF	NM663		082.94°(082.19°)	7.35		@FLO90			RNAV 1
100	TF	NM664		083.00°(082.25°)	5.50		@FLO80			RNAV 1
110	TF	NM652		083.03°(082.28°)	5.50			-200.00		RNAV 1
120	TF	NM653	Y	004.34°(003.59°)	8.68			@180.00		RNAV 1
130	VM			015.00°(014.25°)						RNAV 1
10	HM	AKTOD	Y	040.00°(039.25°)	10.00	L	-FL180 +FL100	-230.00		RNAV1

STAR SUGID 1P RWY 26										
Serial Number	Path Descriptor	Waypoint Identifier	Fly-Over	Course °M(°T)	Distance (NM)	Turn Direction	Altitude (ft)	Speed Limit (Kt)	VPA (%)	Navigation Specification
10	IF	SUGID								RNAV 1
20	TF	NM620		109.30°(108.55°)	121.51		+FL290			RNAV 1
30	TF	NM621		109.97°(109.22°)	12.63		@FL270			RNAV 1
40	TF	AKTOD		110.03°(109.28°)	41.61		+FL160	-250.00		RNAV 1
50	TF	NM660		090.83°(090.08°)	23.51			-230.00		RNAV 1
60	TF	NM661		082.03°(081.28°)	7.00		+FL130			RNAV 1
70	TF	NM662		082.32°(081.57°)	8.57		@FL120			RNAV 1
80	TF	NM663		082.94°(082.19°)	7.35		@FLO90			RNAV 1
90	TF	NM664		083.00°(082.25°)	5.50		@FLO80			RNAV 1
100	TF	NM652		083.03°(082.28°)	5.50			-200.00		RNAV 1
110	TF	NM653	Y	004.34°(003.59°)	8.68			@180.00		RNAV 1
120	VM			015.00°(014.25°)						RNAV 1
10	HM	AKTOD	Y	040.00°(039.25°)	10.00	L	-FL180 +FL100	-230.00		RNAV1

RNAV1 (GNSS) STAR RWY 26 -BISET 1P, DARMI 1P, ERVIS 1P, GUNDI 1P, KABSO 1P, SUGID 1P

WAYPOINTS LIST: VANM SIDs/STARs

S.NO.	Waypoint	Coordinates	S.NO.	Waypoint	Coordinates
1	AAU	N 19:51:39.17 E 075:24:21.81	58	NM560	N 19:19:34.61 E 072:40:42.58
2	AGELA	N 16:36:24.00 E 075:27:57.00	59	NM561	N 19:32:07.25 E 072:40:23.44
3	AKTIV	N 20:14:53.30 E 073:15:29.50	60	NM562	N 19:13:12.83 E 072:27:24.51
4	AKTOD	N 18:35:31.38 E 072:16:24.37	61	NM563	N 18:59:31.31 E 073:20:47.12
5	BB156	N 19:06:37.42 E 073:26:51.38	62	NM601	N 17:36:25.74 E 074:08:00.30
6	BEDOL	N 17:45:39.00 E 073:55:35.00	63	NM602	N 17:30:55.24 E 073:58:51.46
7	BETKU	N 20:28:38.70 E 072:00:58.45	64	NM603	N 18:29:21.09 E 072:57:23.22
8	BISET	N 18:23:21.37 E 069:18:06.46	65	NM604	N 18:32:19.21 E 072:46:14.59
9	DARMI	N 17:47:41.55 E 070:34:38.86	66	NM605	N 18:38:38.82 E 072:39:22.38
10	DOBVU	N 19:48:24.47 E 073:06:52.28	67	NM606	N 18:46:09.62 E 072:40:10.54
11	DOGAP	N 18:48:33.00 E 073:25:00.00	68	NM607	N 19:36:00.90 E 073:09:28.44
12	ENDIG	N 19:24:40.91 E 073:19:54.48	69	NM608	N 19:12:51.54 E 073:14:00.65
13	EPKOS	N 16:53:08.00 E 074:07:13.00	70	NM609	N 19:05:13.73 E 073:10:27.29
14	ERVIS	N 17:05:27.78 E 072:03:14.20	71	NM610	N 18:59:41.58 E 073:08:00.84
15	EXOLU	N 20:12:49.80 E 071:34:10.41	72	NM611	N 18:53:13.83 E 073:04:59.01
16	GUNDI	N 17:21:36.69 E 071:29:36.44	73	NM612	N 18:52:11.02 E 072:57:26.36
17	GUTMU	N 19:35:17.85 E 072:16:08.96	74	NM614	N 18:33:06.10 E 071:37:22.69
18	IPNIB	N 20:56:28.00 E 072:24:01.00	75	NM615	N 18:11:44.05 E 071:25:17.91
19	ISRIS	N 20:45:28.70 E 072:56:46.69	76	NM616	N 18:17:50.23 E 071:38:26.81
20	KABSO	N 17:05:14.80 E 072:49:09.80	77	NM617	N 17:39:33.51 E 072:13:02.09
21	KAKPO	N 19:45:36.00 E 074:00:57.00	78	NM618	N 18:16:35.59 E 072:10:44.01
22	MABTA	N 17:08:28.80 E 073:21:45.60	79	NM619	N 17:47:26.50 E 071:33:39.39
23	MELAX	N 19:29:55.09 E 075:37:56.48	80	NM620	N 18:53:34.41 E 071:22:28.99
24	NM501	N 18:59:03.11 E 073:08:15.12	81	NM621	N 18:49:23.56 E 071:35:03.55
25	NM502	N 18:54:11.60 E 073:11:11.22	82	NM622	N 18:42:50.89 E 072:26:33.33
26	NM503	N 18:46:28.42 E 073:08:51.27	83	NM623	N 18:46:10.68 E 072:31:10.70
27	NM504	N 18:27:27.34 E 073:04:28.71	84	NM624	N 19:49:35.14 E 072:00:15.96
28	NM505	N 18:16:36.02 E 073:06:36.19	85	NM625	N 20:29:01.83 E 072:16:57.80

29	NM506	N 18:18:55.99 E 072:56:01.78	86	NM626	N 19:55:22.33 E 072:12:14.42
30	NM507	N 18:14:26.33 E 072:37:38.53	87	NM627	N 19:24:41.88 E 072:21:24.51
31	NM508	N 18:06:54.18 E 072:07:59.21	88	NM629	N 19:16:17.59 E 073:20:27.92
32	NM509	N 17:47:54.40 E 071:51:50.33	89	NM651	N 18:35:16.37 E 073:17:01.18
33	NM510	N 18:04:03.14 E 071:53:36.86	90	NM652	N 18:40:16.15 E 073:16:30.82
34	NM511	N 18:44:09.95 E 072:50:11.16	91	NM653	N 18:48:57.66 E 073:17:05.14
35	NM512	N 19:02:47.76 E 072:41:18.82	92	NM654	N 19:30:25.38 E 073:16:46.27
36	NM513	N 19:57:15.14 E 072:39:44.94	93	NM656	N 19:14:36.20 E 073:23:21.99
37	NM514	N 20:01:33.21 E 072:21:50.03	94	NM657	N 19:09:12.54 E 073:25:12.87
38	NM515	N 20:04:15.35 E 072:10:30.31	95	NM658	N 19:15:17.95 E 073:32:17.25
39	NM516	N 20:05:58.15 E 072:03:17.56	96	NM659	N 19:09:51.84 E 073:30:27.07
40	NM517	N 20:11:25.74 E 072:22:18.21	97	NM660	N 18:35:27.88 E 072:41:09.16
41	NM518	N 19:09:24.03 E 072:05:51.28	98	NM661	N 18:36:31.66 E 072:48:26.27
42	NM519	N 19:07:28.97 E 071:23:24.83	99	NM662	N 18:37:47.10 E 072:57:21.84
43	NM520	N 18:53:43.54 E 070:42:44.79	100	NM663	N 18:38:47.12 E 073:05:02.00
44	NM522	N 19:19:54.88 E 073:00:56.50	101	NM664	N 18:39:31.72 E 073:10:46.39
45	NM523	N 19:30:21.27 E 073:15:55.12	102	NM665	N 19:27:28.56 E 072:21:35.01
46	NM524	N 20:00:14.94 E 074:41:55.35	103	NM667	N 19:26:56.70 E 072:33:07.95
47	NM525	N 18:41:05.06 E 073:17:08.95	104	NM668	N 19:26:18.44 E 072:46:46.86
48	NM541	N 18:58:18.59 E 072:57:54.13	105	NM669	N 19:25:01.15 E 073:13:41.87
49	NM550	N 18:54:48.82 E 072:50:13.65	106	NONEN	N 20:17:45.12 E 075:29:42.44
50	NM552	N 18:39:11.19 E 072:51:45.10	107	OPAKA	N 19:36:21.00 E 074:32:58.00
51	NM553	N 18:05:14.22 E 072:58:54.78	108	PPN	N 18:35:04.40 E 073:54:44.75
52	NM554	N 18:15:57.26 E 072:43:53.00	109	SAKUN	N 19:36:26.94 E 071:11:48.89
53	NM555	N 18:11:28.55 E 072:25:56.46	110	SUGID	N 19:33:03.00 E 069:20:59.43
54	NM556	N 18:44:38.58 E 072:54:40.30	111	UKETU	N 18:25:26.72 E 073:18:00.81
55	NM557	N 18:45:28.76 E 073:01:12.48	112	URGAG	N 18:51:26.27 E 072:51:20.72
56	NM558	N 19:02:48.05 E 073:07:30.52	113	VELKO	N 19:24:09.24 E 073:35:17.02
57	NM559	N 19:08:08.77 E 072:58:59.46	114	VEPGO	N 19:02:42.54 E 072:32:07.78