

TEL: +91-11-24632950 Extn: 2219/2233 AFS: VIDDYXAX FAX: +91-11-24615508 Email: gmais@aai.aero	INDIA AERONAUTICAL INFORMATION SERVICE AIRPORTS AUTHORITY OF INDIA RAJIV GANDHI BHAVAN SAFDARJUNG AIRPORT NEW DELHI – 110003	123/2026
		25 JUN 2026

File No. ATM-19013(19)/1/2026-ATM

Following supplement is issued for information, guidance and necessary action.

sd/-
विपिन कुमार
VIPIN KUMAR
अध्यक्ष/CHAIRMAN
भारतीय विमानपत्तन प्राधिकरण
AIRPORTS AUTHORITY OF INDIA

[EFFECTIVE DATE: 06 AUG 2026]

INSTRUMENT APPROACH CHART – RNP Y RWY 10 (CAT A/B/C)
TUTICORIN AIRPORT, TUTICORIN (VOTK)

1. Following Instrument Approach Chart is issued for Tuticorin Airport, Tuticorin:
 - i. Instrument Approach Chart – RNP Y RWY 10 (CAT A/B/C)

AMENDMENT/CANCELLATION

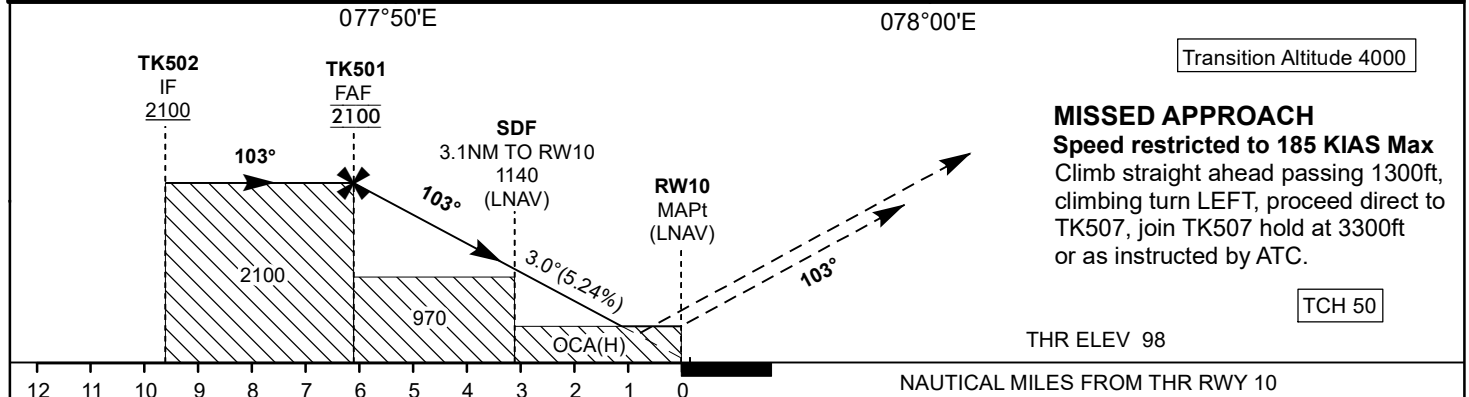
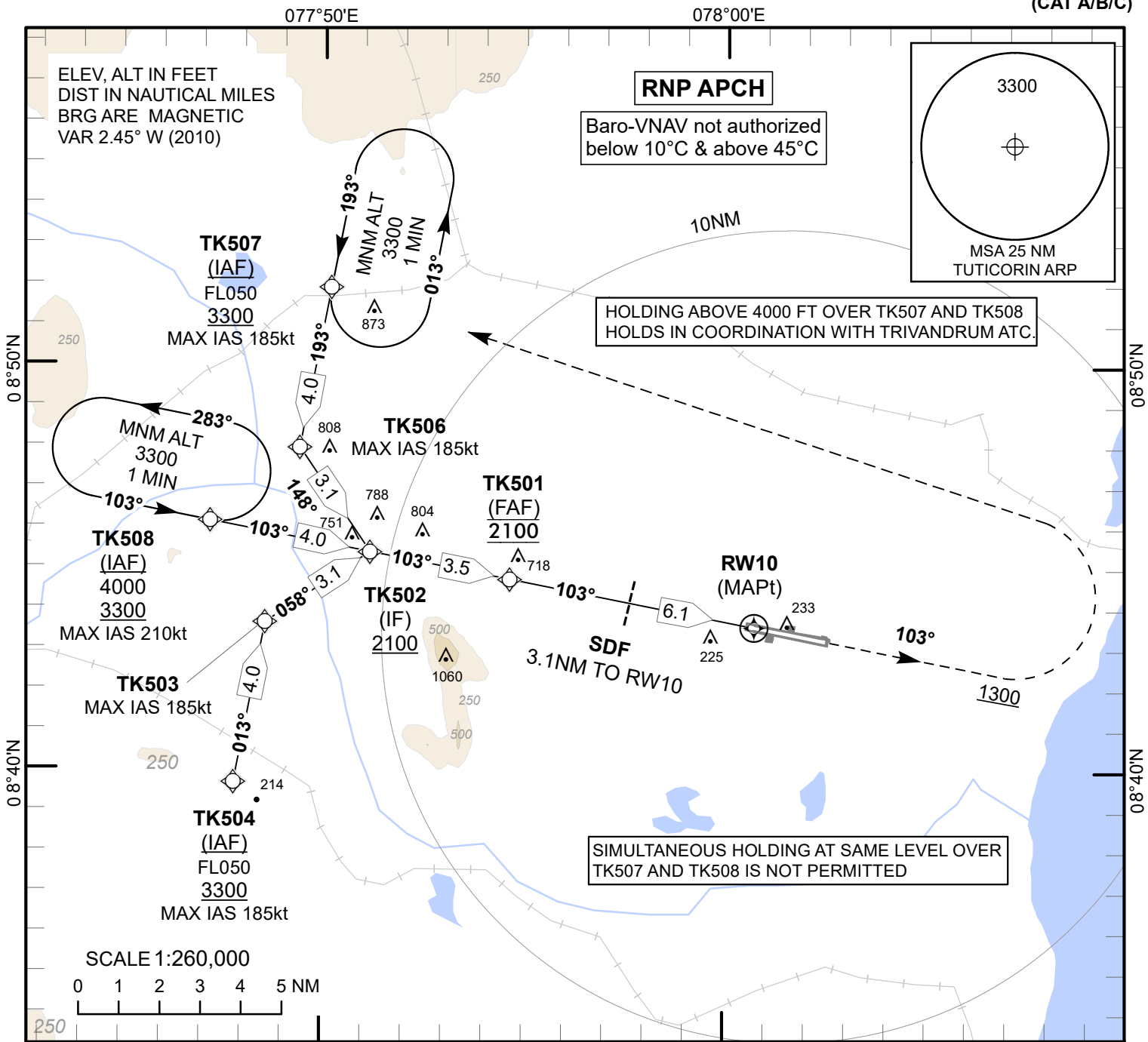
1. **Insert** Instrument Approach Chart – RNP Y RWY 10 and its associated Tabular Description of this AIP Supplement in VOTK AD 2.24 of eAIP India and amend list of charts accordingly.

**INSTRUMENT
APPROACH
CHART**

AERODROME ELEV 98 ft
HEIGHTS RELATED TO
THR RWY 10 - ELEV 98 ft

TWR/APP 118.350/120.375

TUTICORIN (VOTK)
INDIA
RNP Y RWY 10
(CAT A/B/C)



		Distance/Altitude information								
OCA(H)	A/B/C	Distance to RW10	NM	6.1(FAF)	6	5	4	3.1(SDF)	3	2
LNAV/VNAV	409(311)	Altitude	Ft	2100	2060	1750	1430	1140	1110	790
LNAV	500(402)	Ground speed/Rate of Descent information								
Ground Speed			Kt	80	100	120	140	160		
Rate of Descent (5.24%)			Ft/Min	425	530	635	745	850		

DRG.NO. AAI/50-IALC/250225/08/06/2026

INSTRUMENT
APPROACH
CHART

AERODROME ELEV 98 ft
HEIGHTS RELATED TO
THR RWY 10 — ELEV 98 ft

TUTICORIN (VOTK)
INDIA
RNP Y RWY 10
(CAT A/B/C)

TABULAR DESCRIPTION RNP Y RWY 10 (CAT A/B/C) VOTK: -

Serial Number	Path Descriptor	Waypoint Identifier	Fly-Over	Course °M(°T)	Distance	Turn direction	Altitude	Speed limit	VPA/TCH	Navigation Specification
010	IF	TK508					-4000/ +3300	-210		RNP APCH
020	TF	TK502		103.33(100.88)	4.00		+2100			RNP APCH
010	IF	TK507					-FL050/ +3300	-185		RNP APCH
020	TF	TK506		193.33(190.88)	4.00			-185		RNP APCH
030	TF	TK502		148.33(145.88)	3.10		+2100			RNP APCH
010	IF	TK504					-FL050/ +3300	-185		RNP APCH
020	TF	TK503		013.32(10.87)	4.00			-185		RNP APCH
030	TF	TK502		58.32 (55.87)	3.10		+2100			RNP APCH
010	IF	TK502					+2100			RNP APCH
020	TF	TK501		103.33(100.88)	3.50		@2100			RNP APCH
030	TF	RW10	Y	103.33(100.88)	6.10		@148		-3.0/50	RNP APCH
040	CA			103.33(100.88)			+1300	-185		RNP APCH
050	DF	TK507				L	+3300	-185		RNP APCH
060	HM	TK507	Y	193.33(190.88)	1 MIN	L	+3300	-230		RNP APCH
010	HM	TK508	Y	103.33(100.88)	1 MIN	L	+3300	-230		RNP APCH

WAYPOINT LIST RNP Y RWY 10 (CAT A/B/C) VOTK:

Waypoint Identifier	Latitude/Longitude (WGS84) (DD:MM:SS.SS)	
TK508	08°46'07.92"N	077°47'12.80"E
TK502	08°45'22.43"N	077°51'10.83"E
TK507	08°51'53.93"N	077°50'11.20"E
TK506	08°47'57.13"N	077°49'25.45"E
TK501	08°44'42.59"N	077°54'39.09"E
RW10	08°43'32.73"N	078°00'43.84"E
TK504	08°39'40.80"N	077°47'49.63"E
TK503	08°43'37.60"N	077°48'35.34"E