

TEL: +91-11-24632950 Extn: 2219/2233 AFS: VIDDYXAX FAX: +91-11-24615508 Email: <a href="mailto:gmais@aai.aero">gmais@aai.aero</a>	<b>INDIA</b> <b>AERONAUTICAL INFORMATION SERVICE</b> <b>AIRPORTS AUTHORITY OF INDIA</b> <b>RAJIV GANDHI BHAVAN</b> <b>SAFDARJUNG AIRPORT</b> <b>NEW DELHI – 110003</b>	<b>125/2026</b>
		<b>25 JUN 2026</b>

File No. ATM-19013(19)/1/2026-ATM

Following supplement is issued for information, guidance and necessary action.

**sd/-**  
**विपिन कुमार**  
**VIPIN KUMAR**  
**अध्यक्ष/CHAIRMAN**  
**भारतीय विमानपत्तन प्राधिकरण**  
**AIRPORTS AUTHORITY OF INDIA**

[EFFECTIVE DATE: 06 AUG 2026]

**VIGG AD 2.18**  
**(AIR TRAFFIC SERVICES COMMUNICATION FACILITIES)**  
**KANGRA AIRPORT, KANGRA (VIGG)**

1. Primary VHF Communication frequency for Kangra Tower is changed to 120.100 MHz in place of 122.200 MHz. Accordingly, VIGG AD 2.18 of eAIP India and related charts are amended and issued through this AIP Supplement:

**VIGG AD 2.18 AIR TRAFFIC SERVICES COMMUNICATION FACILITIES**

Service Designation	Call sign	Channel(s )	SATVOICE Number(s), if available	Logon address, as appropriate	Hours of operation	Remarks
1	2	3	4	5	6	7
APP	Kangra Tower	118.050 MHz	NIL	NIL	HO	1. Backup <del>FREQ</del> <b>frequency.</b> 2. Functions of Approach Control Service provided by Aerodrome Control Tower
APP	Kangra Tower	<del>122.300 MHz</del> <b>120.100 MHz</b>	NIL	NIL	HO	1. Main Frequency 2. Functions of Approach Control Service provided by Aerodrome Control Tower
TWR	Kangra Tower	118.050 MHz	NIL	NIL	<del>As ATS</del> <b>HO</b>	<del>SDBY FREQ</del> 1. <b>Backup Frequency</b>
TWR	Kangra Tower	<del>122.300 MHz</del> <b>120.100 MHz</b>	NIL	NIL	<del>As ATS</del> <b>HO</b>	1. Main Frequency

**AMENDMENT/CANCELLATION:**

1. **Amend** VIGG AD 2.18 of eAIP India for the change of main frequency for TWR from 122.300 MHz to 120.100 MHz as shown in this AIP Supplement.
2. **Replace** *Aerodrome Chart* on page AD 2 VIGG 1-301, 08 AUG 2024 in eAIP India with the *Aerodrome Chart* of this AIP Supplement.
3. **Replace** *Aircraft Parking/Docking Chart* on page AD 2 VIGG 1-101, 08 AUG 2024 in eAIP India with the *Aircraft Parking/Docking Chart* of this AIP Supplement.
4. **Insert** *Instrument Approach Chart – RNP YRWY 33 (CAT A/B)* of this AIP Supplement in VIGG AD 2.24 of eAIP India and amend list of charts accordingly.
5. **Cancel** AIP Supplement 109/2026.

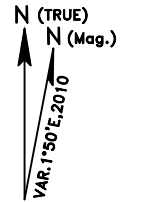
AERODROME CHART 32°09'53.05"N  
076°15'43.76"E ELEV. 2527'

TWR 120.100  
BACK UP 118.050

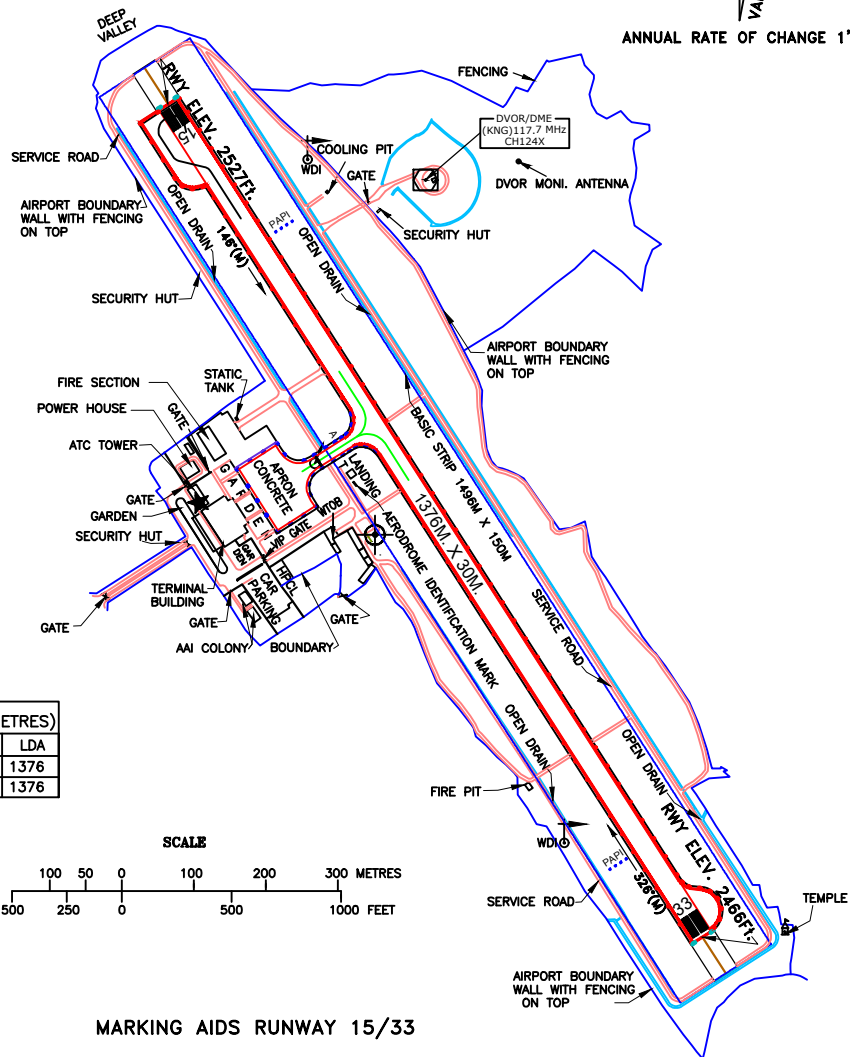
KANGRA, INDIA

KANGRA AIRPORT

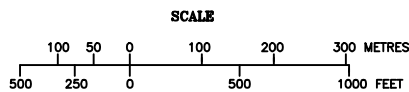
RWY	DIRECTION	THR CO-ORDINATES	THR ELEV.	BEARING STRENGTH
15	146°	32°10'12.60"N 076°15'33.05"E	2527	33/F/B/W/T
33	326°	32°09'34.73"N 076°16'00.88"E	2466	



- \* DATUM : HORIZONTAL-WGS-84; VERTICAL-EGM08
- \* BEARINGS ARE MAGNETIC
- \* DIMENSIONS IN METRES
- \* ELEVATIONS IN FEET

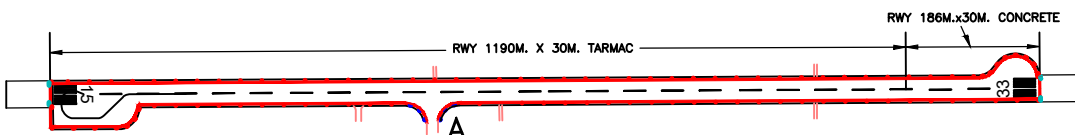


DECLARED DISTANCES (IN METRES)				
RWY	TORA	TODA	ASDA	LDA
15	1376	1376	1376	1376
33	1376	1376	1376	1376



LEGEND	
DVOR CHECK POINT	
RWY HOLDING POINT	
AIRCRAFT STAND NO.	

MARKING AIDS RUNWAY 15/33



DATE OF AERONAUTICAL INFORMATION  
MARCH 2022

(UPDATED AS ON 22.06.2026)

DRG.NO.-AAI/07-A.C./2022

AIRCRAFT PARKING/  
DOCKING CHART

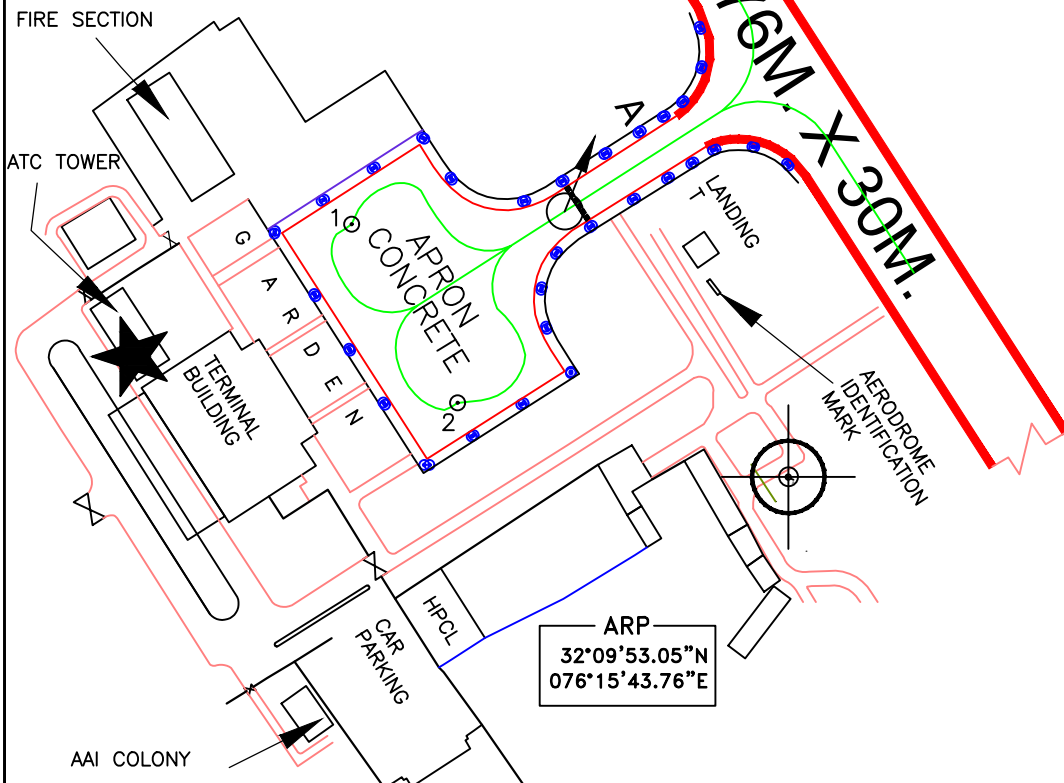
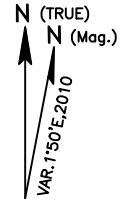
APRON ELEV. 2498'

TWR 120.100  
BACK UP 118.050

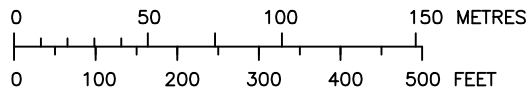
KANGRA, INDIA

KANGRA AIRPORT

- \* DATUM :  
HORIZONTAL-WGS-84;  
VERTICAL-EGMOB
- \* BEARINGS ARE MAGNETIC
- \* DIMENSIONS IN METRES
- \* ELEVATIONS IN FEET



SCALE



LEGEND		
DVOR CHECK POINT		
RWY HOLDING POINT		
AIRCRAFT STAND NO.	⊙ 2	
TWY	WIDTH	PCN
A	15m	33/F/B/W/T

NOTE: AERONAUTICAL GROUND LIGHTS ARE NOT SHOWN IN THIS CHART

DETAIL OF AIRCRAFT STANDS						
STAND NO.	WGS CO-ORDINATES	ELEV.	SUITABILITY	PCN	A/C STATUS	
1	32°09'56.13067"N 76°15'37.49864"E	2498	Q400	30/F/B/W/T	POWER IN/POWER OUT	
2	32°09'53.99749"N 76°15'39.05867"E	2497	Q400	30/F/B/W/T	POWER IN/POWER OUT	

DATE OF AERONAUTICAL INFORMATION  
MARCH 2022

(UPDATED AS ON 22.06.2026)

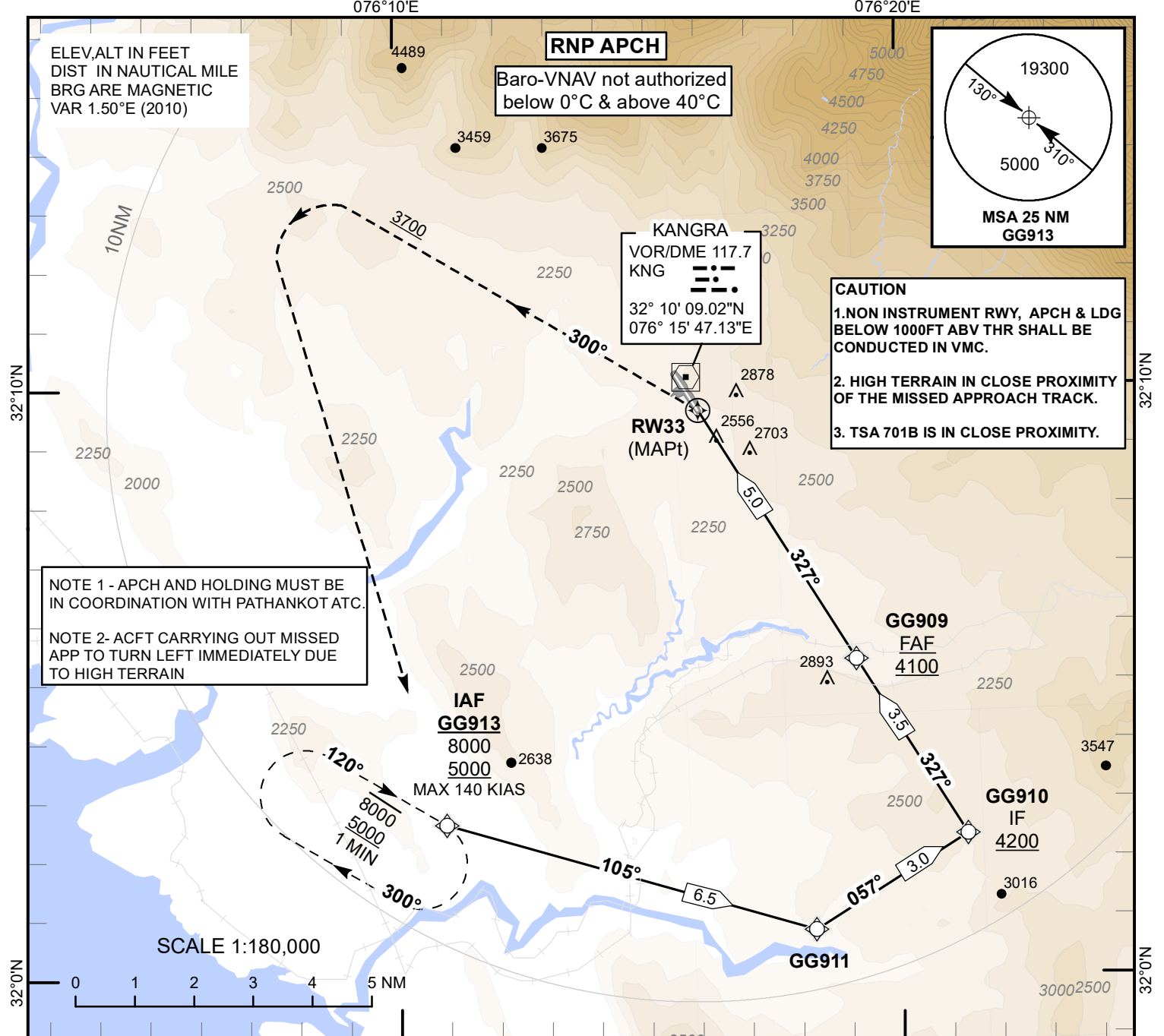
DRG.NO.-AAI/08-PDC/2022

**INSTRUMENT  
APPROACH  
CHART**

**AERODROME ELEV 2527**  
Heights related to  
**THR RWY 33 ELEV 2466**

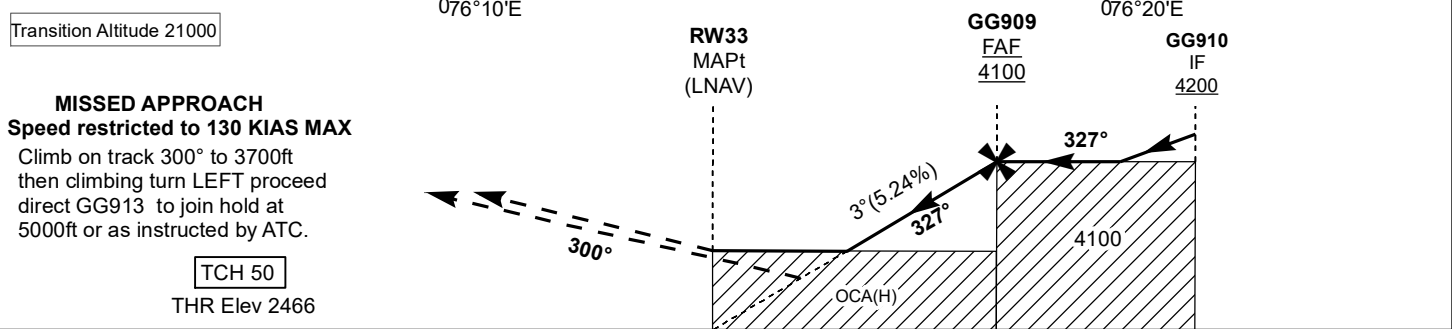
VIGG TWR 120.100/118.050  
PATHANKOT ATC 130.100/122.700  
ALPHA MONITOR 119.700  
NORTHERN CONTROL 125.100/123.050

**KANGRA(VIGG)**  
INDIA  
**RNP Y RWY 33**  
(CAT A/B)



NOTE 1 - APCH AND HOLDING MUST BE IN COORDINATION WITH PATHANKOT ATC.  
NOTE 2 - ACFT CARRYING OUT MISSED APP TO TURN LEFT IMMEDIATELY DUE TO HIGH TERRAIN

**CAUTION**  
1. NON INSTRUMENT RWY, APCH & LDG BELOW 1000FT ABV THR SHALL BE CONDUCTED IN VMC.  
2. HIGH TERRAIN IN CLOSE PROXIMITY OF THE MISSED APPROACH TRACK.  
3. TSA 701B IS IN CLOSE PROXIMITY.



OCA(H)		Distance/Altitude Information (LNAV)					
LNAV/VNAV	3010(544)	Distance to RW33	NM	5	4	3	
		Altitude	Ft	4100	3790	3470	
LNAV	3320(854)	Rate of Descent/Ground Speed Information					
		Ground Speed	Kt	80	100	120	140
		Rate of Descent (5.24%)	Ft/Min	425	530	635	745

DRG.NO.AAI/42-IALC/140825/15/06/2026