

TEL: +91-11-24632950 Extn: 2219/2233 AFS: VIDDYXAX FAX: +91-11-24615508 Email: gmais@aai.aero	INDIA AERONAUTICAL INFORMATION SERVICE AIRPORTS AUTHORITY OF INDIA RAJIV GANDHI BHAVAN SAFDARJUNG AIRPORT NEW DELHI – 110003	130/2026
		25 JUN 2026

File No. ATM-19013(19)/1/2026-ATM

Following supplement is issued for information, guidance and necessary action.

sd/-
विपिन कुमार
VIPIN KUMAR
अध्यक्ष/CHAIRMAN
भारतीय विमानपत्तन प्राधिकरण
AIRPORTS AUTHORITY OF INDIA

[EFFECTIVE DATE: 06 AUG 2026]

INSTRUMENT APPROACH CHART – VOR RWY 34 (CAT A/B/C)
DURGAPUR AIRPORT, DURGAPUR (VEDG)

1. Following Instrument Approach Chart is issued for Durgapur Airport, Durgapur:
 - i. Instrument Approach Chart – VOR RWY 34 (CAT A/B/C)

AMENDMENT/CANCELLATION

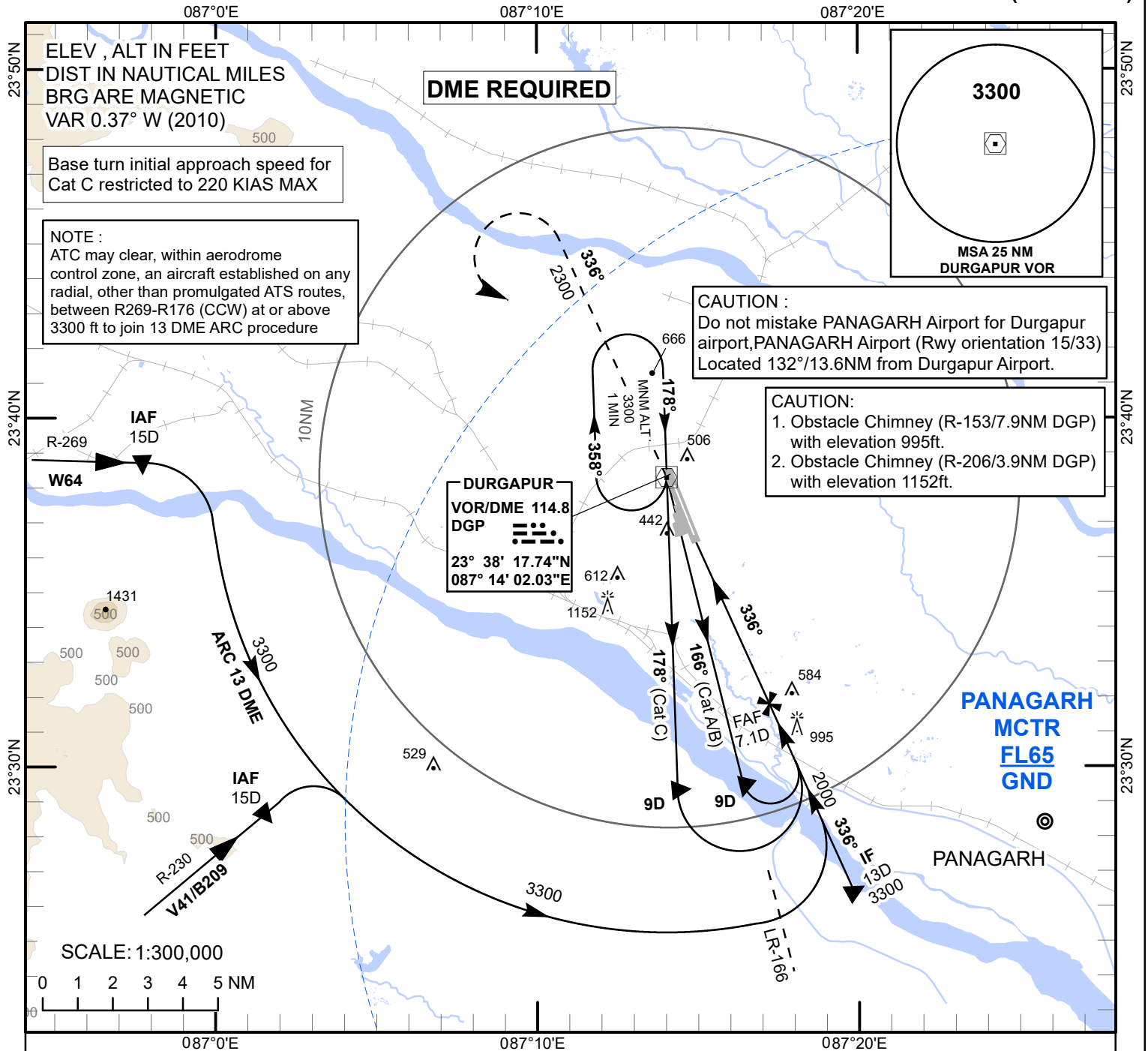
1. **Replace** Instrument Approach Chart – VOR RWY 34 on page AD 2 VEDG 2-203, dated 01 JUL 2019 in e-AIP India with the Instrument Approach Chart – VOR RWY 34 (CAT A/B/C) of this AIP Supplement.

**INSTRUMENT
APPROACH
CHART**

AERODROME ELEV 301 ft
HEIGHTS RELATED TO
THR RWY 34 - ELEV 283 FT

PANAGARH TWR: 124.000
PANAGARH APP: 118.800
DURGAPUR TWR: 119.450/
118.550

DURGAPUR (VEDG)
INDIA
VOR RWY 34
(CAT A/B/C)



Transition Altitude 4000

MISSED APPROACH

Climb straight ahead 2300ft, climbing turn LEFT to join hold over VOR (DGP 114.8) at 3300ft or as instructed by ATC.

THR ELEV 283

NAUTICAL MILE FROM THR RWY 34

VOR/DME

DGP

MAPt 2D

OCA(H)

FAF 7.1D

9D

336°

2000

1670

1350

1030

IF 13D 3300

336°

Start turn at 9D

Distance/Altitude information

OCA(H)	A/B	C	Distance (DGP-DME)	(NM)	7.1D(FAF)	6D	5D	4D
STRAIGHT-IN	850(567)	850(567)	Altitude	(Ft)	2000	1670	1350	1030
CIRCLING	920(619)	1570(1269)	Rate of descent/ Ground speed information					
Ground Speed		(Kt)	80	100	120	140	160	
Rate of Descent		(Ft/ MIN)	425	530	635	745	850	

DRG.NO. AA/09-IALC/010725/04/02/2026