

|   |   |             |
|---|---|-------------|
| TEL: +91-11-24632950<br>Extn: 2219/2233<br>AFS: VIDDYXAX<br>FAX: +91-11-24615508<br>Email: <a href="mailto:gmais@aai.aero">gmais@aai.aero</a> | <b>INDIA</b><br><b>AERONAUTICAL INFORMATION SERVICE</b><br><b>AIRPORTS AUTHORITY OF INDIA</b><br><b>RAJIV GANDHI BHAVAN</b><br><b>SAFDARJUNG AIRPORT</b><br><b>NEW DELHI – 110003</b> | 70/2026     |
|   |   | 20 MAR 2026 |

File No. ATM-19013(19)/1/2026-ATM

Following supplement is issued for information, guidance and necessary action.

sd/-

विपिन कुमार

VIPIN KUMAR

अध्यक्ष/CHAIRMAN

भारतीय विमानपत्तन प्राधिकरण

AIRPORTS AUTHORITY OF INDIA

[EFFECTIVE DATE: 14 MAY 2026]

**AERODROME DATA****HALWARA AIRPORT, HALWARA (VIHX)**

## AD 2. AERODROMES

**VIHX AD 2.1 AERODROME LOCATION INDICATOR AND NAME**

VIHX – HALWARA AIRPORT, HALWARA/DOMESTIC

**VIHX AD 2.2 AERODROME GEOGRAPHICAL AND ADMINISTRATIVE DATA**

|   |  |  |  |
|---|--|--|--|
| 1 | Aerodrome reference point coordinates and its site   | 304457N 0753748E<br>North of Runway, abeam Middle Marker<br>Appx 30 M/100 FT from runway edge. |  |
| 2 | Direction and distance of aerodrome reference point from the centre of the city or town which the aerodrome serves | 26 Km Southwest of Ludhiana Town   |  |
| 3 | Aerodrome elevation and reference temperature  | 790 FT/40 DEG C  |  |
| 4 | Magnetic, date of information and annual change  | 1.9 DEG East (2022)/Annual Change not determined   |  |
| 5 | Name of aerodrome operator, address, telephone, telefax, e-mail address, AFS address, website (if available)       | Indian Air Force   | Civil Terminal   |
|   |  | SATCO<br>Air Force Station Halwara<br>Ludhiana (Punjab)<br>PIN - 141106                        | Airport Director<br>Airports Authority of India<br>Halwara Airport<br>Ludhiana (Punjab) 141106 |

|   |                                      |  |  |  |
|---|--------------------------------------|--|--|--|
|   |                                      | Tele                                       | +91-1624-276947  | +91 9815555772   |
|   |                                      | Fax  | +91-1624-276947  |  |
|   |                                      | AFS  |  |  |
|   |                                      | E-mail                                     | <a href="mailto:happi-ness9@gov.in">happi-ness9@gov.in</a> | <a href="mailto:ceolial@aai.aero">ceolial@aai.aero</a> |
| 6 | Types of traffic permitted (IFR/VFR) | IFR / VFR                                  |  |  |
| 7 | Remarks                              | Joint User Airfield (Defence & Civil Ops). |  |  |

### VIHX AD 2.3 OPERATIONAL HOURS

|    |                            |   |
|----|----------------------------|---|
| 1  | Aerodrome Operator         | Indian Air Force (Air Traffic Services)<br>HJ   |
| 2  | Custom and immigration     | Not Available   |
| 3  | Health and sanitation      | Health – Nil<br>Sanitation - As per AD operator Hours   |
| 4  | AIS Briefing office        | H24 (IAF)   |
| 5  | ATS Reporting Office (ARO) | HJ (IAF)  |
| 6  | MET Briefing office        | H24 (IAF)   |
| 7  | Air Traffic Service        | HJ (IAF)  |
| 8  | Fuelling                   | IOCL (During AD Hours)  |
| 9  | Handling                   | Available by AIASL and Global Flight Handling Services on prior coordination with Authorised Ground Handling Agency |
| 10 | Security                   | Available, 24 Hrs   |
| 11 | De-icing                   | Not Available   |
| 12 | Remarks                    | Non-scheduled operator to take prior clearance from Airport Director for Parking and from ATC for operations        |

### VIHX AD 2.4 HANDLING SERVICES AND FACILITIES

|   |                                  |   |
|---|----------------------------------|---|
| 1 | Cargo-handling facilities        | Not Available   |
| 2 | Fuel and oil types               | Fuel Type: Jet A-1<br>Oil Type: NIL                         |
| 3 | Fuelling facilities and capacity | IOCL, Mobile Refueller-16Kl Qty 02 Static –<br>200Kl Qty 02 |
| 4 | De-icing facilities              | Not Available   |

|   |   |  |
|---|---|--|
| 5 | Hanger space for visiting aircraft      | Not Available  |
| 6 | Repair facilities for visiting aircraft | Not Available  |
| 7 | Remarks                                 | Contact No Aviation Fuel Station (IOCL):<br>+91 9873104032 |

#### **VIHX AD 2.5 PASSENGER FACILITIES**

|   |  |  |                                      |
|---|--|--|--------------------------------------|
| 1 | Hotel(s) at or in the vicinity of aerodromes             | Available in nearby townships within 10-20 km                                      |                                      |
| 2 | Restaurant(s) at or in the vicinity of aerodromes        | Available in nearby townships within 05km  |                                      |
| 3 | Transportation possibilities                             | Hired Cars   |                                      |
| 4 | Medical Facilities                                       | First Aid available at terminal. Hospitals are available within 05 km from airport |                                      |
| 5 | Bank and post office at or in the vicinity of aerodromes | Post Office  | Available within 05 km from airport. |
|   |  | Banks  | Available within 05 km from airport. |
| 6 | Tourist office   | Not available  |                                      |
| 7 | Remarks  | NIL  |                                      |

#### **VIHX AD 2.6 RESCUE AND FIRE FIGHTING SERVICES**

|   |   |   |  |
|---|---|---|--|
| 1 | Aerodrome category for fire fighting        | CAT- VII within AD Hours  |  |
| 2 | Rescue equipment                            | Available as per category   |  |
| 3 | Capability for removal of disabled aircraft | Disabled aircraft removal to be ensured by Aircraft operator in coordination with local authority before commencement of Operation. |  |
| 4 | Remarks                                     | NIL   |  |

#### **VIHX AD 2.7 SEASONAL AVAILABILITY CLEARING**

|   |                              |     |  |
|---|------------------------------|-----|--|
| 1 | Type(s)of clearing equipment | NIL |  |
| 2 | Clearance priorities         | NIL |  |
| 3 | Remarks                      | NIL |  |

## VIHX AD 2.8 APRONS, TAXIWAYS AND CHECK LOCATIONS/POSITIONS DATA

|   |  |   |                           |          |          |          |
|---|--|---|---------------------------|----------|----------|----------|
| 1 | Designation, surface and strength of aprons          | Designation                                 | Civil Apron (67 M X 95 M) |          |          |          |
|   |  | Surface                                     | Concrete                  |          |          |          |
|   |  | Strength                                    | PCR: 665/R/C/W/T          |          |          |          |
| 2 | Designation, width, surface and strength of taxiways | Designation                                 | PTT                       | TWY A    | TWY D    | TWY L    |
|   |  | Width                                       | 23 M                      | 23 M     | 23 M     | 23 M     |
|   |  | Surface                                     | Asphalt                   | Asphalt  | Asphalt  | Asphalt  |
|   |  | Strength                                    | Not Avbl                  | Not Avbl | Not Avbl | Not Avbl |
| 3 | Location and elevation of altimeter checkpoints      | Location                                    | NIL                       |          |          |          |
|   |  | Elevation                                   | NIL                       |          |          |          |
| 4 | Location of VOR checkpoints                          | At RWY Holding position of TWY A and TWY L. |                           |          |          |          |
| 5 | Position of INS checkpoints                          | NIL   |                           |          |          |          |
| 6 | Remarks  | NIL   |                           |          |          |          |

## VIHX AD 2.9 SURFACE MOVEMENT GUIDANCE AND CONTROL SYSTEM AND MARKINGS

|   |  |   |          |   |  |
|---|--|---|----------|---|--|
| 1 | Use of aircraft stand identification signs, taxiway guidelines and visual docking/parking guidance system at aircraft stands | Taxi guidance signs at all intersections with taxiway and runway, at all holding positions, gridlines at Apron. |          |   |  |
| 2 | Runway and taxiway markings and lights   | RWY   | Markings | Designation, Threshold, touchdown zone, aiming point, Centre line, Runway Edge.   |  |
|   |  |   | Lights   | Threshold lights, Runway Edge lights, Runway end light, Runway Centre Line Light. |  |
|   |  | TWY   | Marking  | Centre line, Taxi holding Position at all taxi ways, intersection.                |  |
|   |  |   | Lights   | Taxiway Edge light  |  |
| 3 | Stop bars (if any)   | At TWY A, TWY D and TWY L.  |          |   |  |
| 4 | Remarks  | NIL   |          |   |  |

## VIHX AD 2.10 AERODROME OBSTACLES

| RWY/Area affected             | Obstacle type | Coordinates         | Elevation (FT) | Marking/LGT | Remarks      |
|-------------------------------|---------------|---------------------|----------------|-------------|--------------|
| 1                             | 2             | 3                   | 4              | 5           | 6            |
| 31/TKOF<br>13/APCH            | MAST          | 304741N<br>0753548E | 909            | Lighted     | Mast         |
| 31/TKOF<br>13/APCH            | MAST          | 304929N<br>0753418E | 951            | Lighted     | MWT          |
| 31/TKOF<br>13/APCH            | MAST          | 304746N<br>0753216E | 928            | Lighted     | Mast         |
| 31/TKOF<br>13/APCH            | MAST          | 304823N<br>0752924E | 1010           | Lighted     | Mast         |
| 31/TKOF<br>13/APCH            | MAST          | 304419N<br>0753744E | 902            | Lighted     | Mast         |
| 13/TKOF<br>31/APCH            | MAST          | 304401N<br>0753812E | 896            | Lighted     | Mast         |
| 13/TKOF<br>31/APCH            | MAST          | 304335N<br>0753829E | 925            | Lighted     | Mast         |
| 13/TKOF<br>31/APCH            | MAST          | 304332N<br>0753825E | 935            | Lighted     | Mast         |
| 13/TKOF<br>31/APCH            | MAST          | 304116N<br>0754008E | 968            | Lighted     | Mast         |
| 13/TKOF<br>31/APCH            | MAST          | 304229N<br>0754245E | 991            | Lighted     | Mast         |
| 13/TKOF<br>31/APCH            | MAST          | 304229N<br>0754026E | 942            | Unlighted   | Thin Mast    |
| In circling area<br>and at AD | BUILDING      | 304458N<br>0753755E | 856            | Lighted     | Building     |
| In circling area<br>and at AD | BUILDING      | 304501N<br>0753804E | 886            | Lighted     | Building     |
| In circling area<br>and at AD | BUILDING      | 304458N<br>0753749E | 807            | Lighted     | Building     |
| In circling area<br>and at AD | BUILDING      | 304415N<br>0753829E | 814            | Lighted     | Building     |
| In circling area<br>and at AD | MAST          | 304421N<br>0753747E | 902            | Lighted     | Mast (North) |
| In circling area<br>and at AD | MAST          | 305517N<br>0753711E | 801            | Lighted     | Mast         |
| In circling area<br>and at AD | MAST          | 304436N<br>0753818E | 801            | Lighted     | Mast         |
| In circling area<br>and at AD | MAST          | 304533N<br>0753827E | 915            | Lighted     | Mast         |
| In circling area<br>and at AD | POLE          | 304510N<br>0753616E | 902            |             | Pole         |

| RWY/Area affected          | Obstacle type | Coordinates         | Elevation (FT) | Marking/LGT | Remarks  |
|----------------------------|---------------|---------------------|----------------|-------------|----------|
| 1                          | 2             | 3                   | 4              | 5           | 6        |
| In circling area and at AD | MAST          | 304109N<br>0753844E | 902            | Lighted     | Mast     |
| In circling area and at AD | MAST          | 304305N<br>0753613E | 919            | Lighted     | Mast     |
| In circling area and at AD | TOWER         | 305431N<br>0753337E | 899            | Lighted     | Tower    |
| In circling area and at AD | MAST          | 305154N<br>0753457E | 955            | Lighted     | Mast     |
| In circling area and at AD | MAST          | 305008N<br>0755412E | 1047           | Lighted     | Mast     |
| In circling area and at AD | MAST          | 305057N<br>0754059E | 1086           | Lighted     | Mast     |
| In circling area and at AD | MAST          | 305035N<br>0754022E | 988            | Lighted     | Mast     |
| In circling area and at AD | POLE          | 304421N<br>0753747E | 902            | Lighted     | Pole     |
| In circling area and at AD | MAST          | 304832N<br>0752816E | 961            | Lighted     | Mast     |
| In circling area and at AD | MAST          | 304746N<br>0753216E | 928            | Lighted     | Mast     |
| In circling area and at AD | MAST          | 304741N<br>0753548E | 958            | Lighted     | Mast     |
| In circling area and at AD | MAST          | 304804N<br>0754126E | 991            | Lighted     | Mast     |
| In circling area and at AD | MAST          | 304802N<br>0753816E | 919            | Lighted     | Mast     |
| In circling area and at AD | MAST          | 304745N<br>0754506E | 1007           | Lighted     | Mast     |
| In circling area and at AD | MAST          | 304517N<br>0754203E | 1010           | Lighted     | Mast     |
| In circling area and at AD | MAST          | 304156N<br>0753644E | 965            | Lighted     | Mast     |
| In circling area and at AD | MAST          | 304109N<br>0754456E | 968            | Lighted     | Mast     |
| In circling area and at AD | MAST          | 304848N<br>0753906E | 958            | Lighted     | Mast     |
| In circling area and at AD | MAST          | 304037N<br>0754055E | 961            | Lighted     | Mast     |
| In circling area and at AD | BUILDING      | 305149N<br>0754258E | 1106           | Lighted     | Building |

## VIHX AD 2.11 METEOROLOGICAL INFORMATION PROVIDED

|    |   |   |
|----|---|---|
| 1  | Name of the associated meteorological office  | MET Section, Air Force Station Halwara  |
| 2  | Hours of service and, where applicable, the designation of the responsible meteorological office outside these hours                            | 24 Hrs Observational watch<br>18 Hrs Forecasting watch (0000 UTC till 1800 UTC)   |
| 3  | Office responsible for preparation of TAFs and periods of validity and interval of issuance of the forecasts                                    | Met Section, Air Force Station Halwara<br>TOO: 0330 UTC<br>Validity: 0600 UTC to 1800 UTC<br>TOO: 0930 UTC<br>Validity: 1800 UTC to 2400 UTC<br>TOO: 1530 UTC<br>Validity: 0000 UTC to 1200 UTC |
| 4  | Availability of the trend forecast for the aerodrome and interval of issuance   | TREND forecast is available with every half hourly METAR during the forecasting watch hours.  |
| 5  | Information on how briefing and/or consultation is provided   | Briefing is conducted in MET section.   |
| 6  | Types of flight documentation supplied and language(s) used in flight documentation   | T3 and T4 route forecast in English.  |
| 7  | Charts and other information displayed or available for briefing or consultation  | Surface charts, Upper Air charts, Satellite images, Radar images are available  |
| 8  | Supplementary equipment available for providing information on meteorological conditions, e.g. weather radar and receiver for satellite images; | Automatic Weather Station, Runway Visual Range, Digital Electronic Theodolite (for taking upper air ascent), Lightning Detection System, Radar and Satellite images are available               |
| 9  | The air traffic services unit(s) provided with meteorological information   | ATS, Air Force Station Halwara  |
| 10 | Additional information, e.g. concerning any limitation of service.  | Forecasting is limited to ATS watch hours only.   |

## VIHX AD 2.12 RUNWAY PHYSICAL CHARACTERISTICS

| Designations  | TRUE Bearings  | Dimensions of RWY (M)              | Strength of pavement (PCN) and associated data) and surface of each runway and associated stopway | Geographical coordinates for threshold and runway end      |
|---|--|------------------------------------|---|--|
| 1   | 2  | 3                                  | 4   | 5  |
| 13  | 131 DEG  | 3034 X 45 M                        | To be Evaluated   | THR:<br>304527N<br>0753704E<br>END:<br>304422N<br>0753830E |
| 31  | 311 DEG  | 3034 X 45 M                        | To be Evaluated   | THR:<br>304425N<br>0753826E<br>END:<br>304527N<br>0753704E |
| THR elevation and highest elevation of TDZ of precision APP RWY | Slope of runway and associated stop way                                  | Dimensions of stopway (M)          | Dimensions of clearway (M)  | Dimensions of strips (M)                                   |
| 6   | 7  | 8                                  | 9   | 10   |
| THR: 786 FT<br>TDZ:   | Not Available  | 310 X 45                           | 310 X 45  | 3774 X 280 M   |
| THR: 790 FT<br>TDZ:   | Not Available  | 312 X 45                           | 312 X 45  | 3774 X 380 M   |
| Dimensions of runway end safety areas                           | Location (which runway end) and description of arresting system (if any) | Existence of an obstacle-free zone | Remarks.  |  |
| 11  | 12   | 13                                 | 14  |  |
| 310 x 90 M  | Arresting system not available for civil flights                         | Yes                                | 1. NIL  |  |
| 312 x 90 M  | Arresting system not available for civil flights                         | Yes                                | 1. NIL  |  |

### VIHX AD 2.13 DECLARED DISTANCES

| RWY Designator | TORA (M) | TODA (M) | ASDA (M) | LDA (M) | Remarks<br>Including runway entry or start point where alternative reduced declared distances have been declared. |
|----------------|----------|----------|----------|---------|---|
| 1              | 2        | 3        | 4        | 5       | 6   |
| 13             | 3034     | 3344     | 3344     | 3034    | NIL   |
| 31             | 3034     | 3346     | 3346     | 2881    | NIL   |

### VIHX AD 2.14 APPROACH AND RUNWAY LIGHTING

| Runway Designator  | Type, length and intensity of approach lighting system;     | Runway threshold lights, colour and wing bars; | Type of visual slope indicator system | Length of runway touchdown zone lights;  |
|--|---|--|---------------------------------------|--|
| 1  | 2   | 3  | 4                                     | 5  |
| 13   | SALS<br>420 M<br>LIH  | Green<br>---                                   | PAPI<br>RIGHT/3 DEG                   | 900 M  |
| 31   | CAT II<br>900 M<br>LIH                                      | Green<br>---                                   | PAPI<br>RIGHT/3 DEG                   | 900 M  |
| Length, spacing, colour and intensity of runway centre line lights | Length, spacing, colour and intensity of runway edge lights | Colour of runway end lights and wing bars      | Length and colour of stopway lights   | Remarks  |
| 6  | 7   | 8  | 9                                     | 10   |
| 3034 M<br>15 M<br>WHITE<br>LIH                                     | 3034 M<br>60 M<br>WHITE<br>LIH                              | Red  | 310 M<br>Red                          | 1. Colour of last 300 M of runway centre line lights is Red, from 300M to 600M Alternate Red & Clear, Rest all in clear filter<br>2. Colour of last 900 M of runway edge lights is amber |
| 3034 M<br>15 M<br>WHITE<br>LIH                                     | 3034 M<br>60 M<br>WHITE<br>LIH                              | Red  | 312 M<br>Red                          | 1. Colour of last 300 M of runway centre line lights is Red, from 300M to 600M Alternate Red & Clear, Rest all in clear filter<br>2. Colour of last 900 M of runway edge lights is amber |

### VIHX AD 2.15 OTHER LIGHTING, SECONDARY POWER SUPPLY

|   |   |  |   |
|---|---|--|---|
| 1 | Location, characteristics and hours of operation of aerodrome beacon/identification beacon (if any) | ABN  | At Tower Building, Alternate White & Green, 24 Flashes /Min, During IMC & Night Ops |
|   |   | IBN  | Not Available   |
| 2 | Location and lighting (if any) of anemometer/landing direction indicator;                           | LDI  | In Front of ATC Building  |
|   |   | Anemometer   | End of RWY 31 and RWY 13 along with AWS   |
| 3 | Taxiway edge and taxiway centre line lights;  | Edge   | All Taxiway and Links, Distance 200 ft  |
|   |   | Centre line  | Nil   |
| 4 | Secondary power supply including switch-over time;  | Secondary Power Supply to all lighting System/ 08-10 sec |   |
| 5 | Remarks   | Nil  |   |

### VIHX AD 2.16 HELICOPTER LANDING AREA

|   |   |   |
|---|---|---|
| 1 | Geographical coordinates of the geometric centre of touchdown and lift-off (TLOF) or of each threshold of final approach and take-off (FATO) area | Not Established   |
| 2 | TLOF and/or FATO area elevation:  | Not Established   |
| 3 | TLOF and FATO area dimensions to the nearest metre or foot, surface type, bearing strength and marking;   | Not Established   |
| 4 | True bearings of FATO;  | Not Established   |
| 5 | Declared distances available,   | Not Established   |
| 6 | Approach and FATO lighting;   | Not Established   |
| 7 | Remarks   | TWY A and TWY B on runway and Z helipad (on request from Pilot) |

### VIHX AD 2.17 AIR TRAFFIC SERVICES AIRSPACE

|    |   |  |
|----|---|--|
| 1  | Airspace designation, geographical coordinates and lateral limits             | To be notified                               |
| 2  | Vertical limits   | To be notified                               |
| 3  | Airspace classification   | To be notified                               |
| 4  | Call sign and language(s) of the air traffic services unit providing service; | Halwara Tower<br>Halwara Approach<br>English |
| 5  | Transition altitude   | 4000 FT                                      |
| 6. | Hours of applicability  | HJ   |
| 6  | Remarks   | NIL  |

### VIHX AD 2.18 AIR TRAFFIC SERVICES COMMUNICATION FACILITIES

| Service Designation           | Call sign           | Channel(s)  | SATVOICE Number(s), if available |
|-------------------------------|---------------------|-------------|----------------------------------|
| 1                             | 2                   | 3           | 4                                |
| TWR                           | Halwara Tower       | 130.100 MHz | NIL                              |
| APP                           | Halwara Approach    | 130.100 MHz | NIL                              |
| ATIS                          | Halwara Information | 115.200 MHz | NIL                              |
| Logon address, as appropriate | Hours of operation  | Remarks     |                                  |
| 5                             | 6                   | 7           |                                  |
| Not Available                 | HJ                  | NIL         |                                  |
| Not Available                 | HJ                  | NIL         |                                  |
| Not Available                 | HJ                  | NIL         |                                  |

## VIHX AD 2.19 RADIO NAVIGATION AND LANDING AIDS

| Type of aids, magnetic and type of supported operation for ILS/MLS, basic GNSS, SBAS and GBAS, and for VOR/ILS/MLS station used for technical line-up of the aid | Identification | Frequency(ies), Channel number(s), Service provider, and reference path identifier(s) (RPI), as appropriate | Hours of operation, as appropriate; | Geographical coordinates of the position of the transmitting antenna | Elevation of transmitting antenna of DME/ elevation of GBAS reference point | Service volume radius from the GBAS reference point | Remarks  |
|--|----------------|---|-------------------------------------|--|---|---|--|
| 1  | 2              | 3   | 4                                   | 5  | 6   | 7   | 8  |
| DVOR/DME   | HLW            | 115.200 MHz   | HJ                                  | 304437N<br>0753756E  | 817 FT  | --  | 1. Controlling Authority:<br>Indian Air Force<br>2. DME Collocated with DVOR                                       |
| LOC 31<br>CAT II   | IHLR           | 111.500 MHz   | HJ                                  | 304533N<br>0753655E  |   | --  | 1. Controlling Authority:<br>Indian Air Force  |
| GP 31  |                | 332.900 MHz   | HJ                                  | 304429N<br>0753812E  |   | --  | 1. Controlling Authority:<br>Indian Air Force<br>2. Oscillation observed between 1.4 NM to 0.156 NM from THR on GP |
| DME ILS 31   | IHLR           |   | HJ                                  | 304429N<br>0753812E  | 784 FT  | --  | 1. Controlling Authority:<br>Indian Air Force  |

**Insert** details of ILS IHLR (Halwara ILS) in GEN 2.5 and DVOR HLW (Halwara DVOR) in GEN 2.5 and ENR 4.1 of eAIP India accordingly.

## **VIHX AD 2.20 LOCAL AERODROME REGULATIONS**

**NIL**

## **VIHX AD 2.21 NOISE ABATEMENT PROCEDURES**

**NIL**

## **VIHX AD 2.22 FLIGHT PROCEDURES**

**NIL**

## **VIHX AD 2.23 ADDITIONAL INFORMATION**

1. Open saucer drain on northern shoulder of runway having length 850 M, depth 0.5 M, width 02 M and distance from runway edge 83 M.
2. Open saucer drain on southern shoulder of parallel taxi track (PTT) having length 2000 M, width 03 M, depth 0.6 M and distance from edge of parallel taxi track 27 M.
3. Open unpaved saucer drain on northern shoulder of runway from Dumbell 31 to link R2 having length 900 M, depth 0.5 M, width 2 M and distance from runway edge 83 M.
4. Open box drain on south of runway between link R2 and link E having length 2100 M, width 1.6 M, depth 1 M and distance from runway edge 70 M.
5. Open unpaved saucer drain on southern shoulder of parallel taxi track (PTT) from link C to Dumbell 14 having length 2200 M, width 3 M, depth 0.6 M and distance from edge of PTT 27 M.
6. The following ground markings on the manoeuvring area at variance from ICAO Annex 14, Vol 1:
  - i) Centre line on parallel taxiway is broken white.
  - ii) White transverse strip painted across parallel taxiway at extremities.
  - iii) Solid yellow triangles painted at beginning parallel taxi track on both ends.
  - iv) Two helipads marked on parallel taxi track abeam link C and link D.
  - v) Military aircraft parking bay markings on runway turn pads at both ends.
  - vi) Non-Load Bearing (NLB) marking not available on link A, Link D and Parallel taxi track.

## **VIHX AD 2.24 CHARTS RELATED TO AN AERODROME**

1. Aircraft Parking/Docking Chart
2. Instrument Approach Chart – CAT I ILS RWY 31 (19 MAR 2026)
3. Instrument Approach Chart – CAT II ILS RWY 31 (19 MAR 2026)
4. Instrument Approach Chart – VOR Z RWY 13 (27 DEC 2023)
5. Instrument Approach Chart – VOR Y RWY 13 (27 DEC 2023)
6. Instrument Approach Chart – VOR Z RWY 31 (19 MAR 2026)
7. Instrument Approach Chart – VOR Y RWY 31 (27 DEC 2023)

## **VIHX AD 2.25 VISUAL SEGMENT SURFACE (VSS) PENETRATION**

| <b>Procedure</b> | <b>Procedure Minima</b> | <b>Procedure Minima</b> |
|------------------|-------------------------|-------------------------|
| <b>1</b>         | <b>2</b>                | <b>3</b>                |
| ---              | ---                     | ---                     |

**NOTE: AERONAUTICAL DATA AND AERONAUTICAL INFORMATION OF THIS AIP SUPPLEMENT IS PROVIDED BY INDIAN AIR FORCE.**

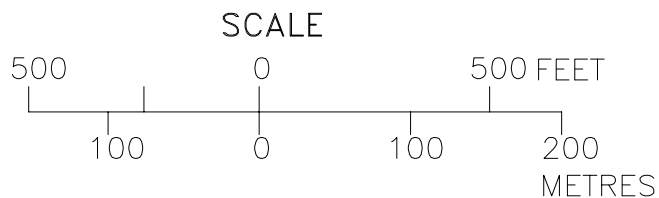
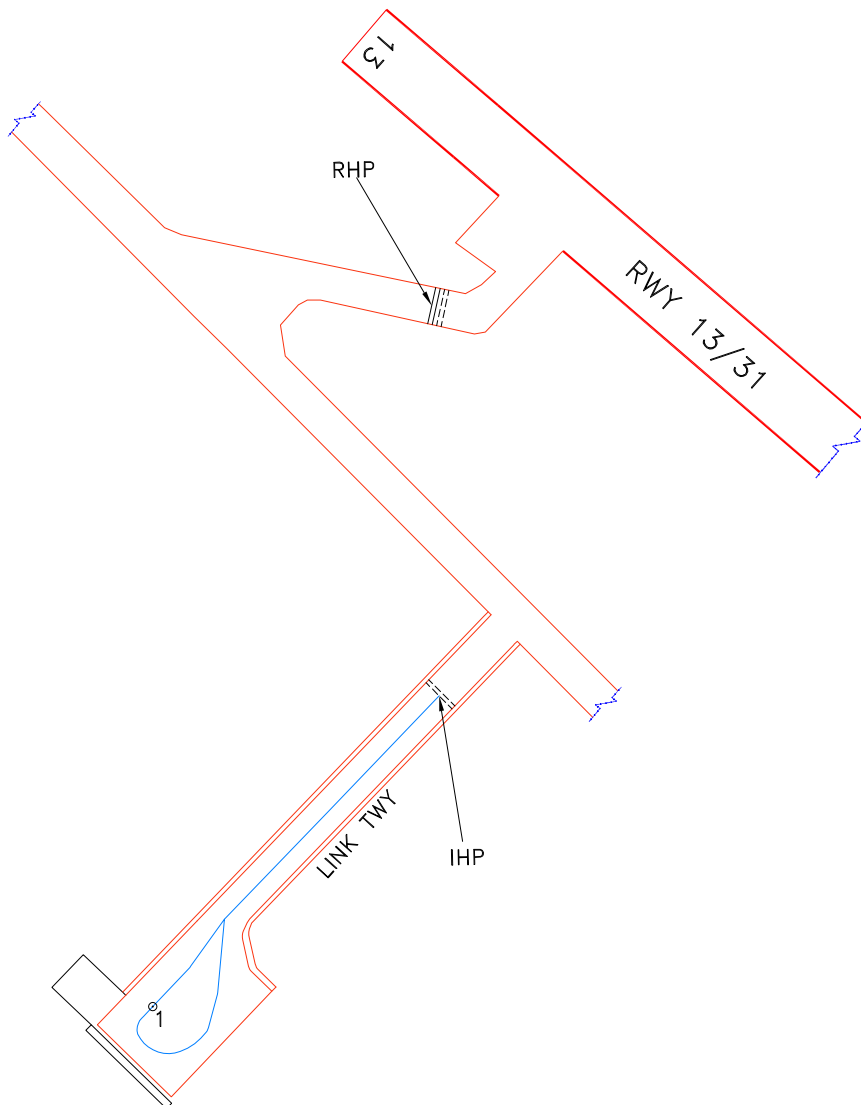
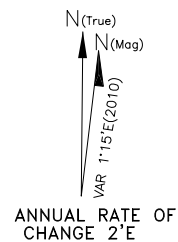
### **CANCELLATION**

1. **Cancel** AIP Supplement 62/2026

### **NOTAM INCORPORATED IN THIS AIP SUPPLEMENT:**

1. NOTAM C0219/26, VIDPYNXX
2. NOTAM C0373/22, VIDPYNXX
3. NOTAM C0048/26, VIDPYNXX
4. NOTAM C0045/26, VIDPYNXX

\* DATUM :  
HORIZONTAL : WGS-84  
VERTICAL : EGM-08  
\* DIMENSIONS IN METRES  
\* ELEVATIONS IN FEET.



| LEGEND                     |      |
|----------------------------|------|
| AIRCRAFT STAND             | ⊙1   |
| RWY HOLDING POSITION       | ≡≡≡  |
| INTERMEDIATE HOLD.POSITION | ---- |

| TAXIWAY  | PCR         | WIDTH |
|----------|-------------|-------|
| LINK TWY | 665/R/C/W/T | 24M   |

| STAND No. | WGS CO-ORDINATES FOR AIRCRAFT STANDS | SUITABILITY | PCR         | ELEV.  | STATUS             |
|-----------|--------------------------------------|-------------|-------------|--------|--------------------|
| 1.        | 30°45'06.75236"N 075°36'58.08328"E   | A321        | 665/R/C/W/T | 787ft. | POWER IN POWER OUT |

1-1

VIHX  
HALWARA

IAF  
Eff 19 MAR 24

HALWARA, INDIA  
CAT I ILS RWY 31

|  |                      |                           |                           |                        |                  |               |
|--|----------------------|---------------------------|---------------------------|------------------------|------------------|---------------|
| HALWARA Approach<br>130.1  |                      | HALWARA Tower<br>130.1    |                           | ATIS<br>115.2          | 2300'            |               |
| VOR<br>HLW<br>115.2  | LOC<br>IHLR<br>111.5 | FINAL<br>Apch Crs<br>310° | GS<br>D 4.0 IHLR<br>2050' | DA (H)<br>1002' (212') |                  | Apt Elev 790' |
|  |                      |                           | RWY 790'                  |                        |                  |               |
| <b>MISSED APCH :</b> Climb STRAIGHT AHEAD to 2300', then climbing turn LEFT to join VOR hold at 3000' or as directed by ATC. |                      |                           |                           |                        |                  |               |
| Alt Set: hPa   |                      | Rwy Elev: 28 hPa          | Trans level: By ATC       |                        | Trans alt: 4000' |               |
|  |                      |                           |                           |                        | MSA<br>HLW VOR   |               |

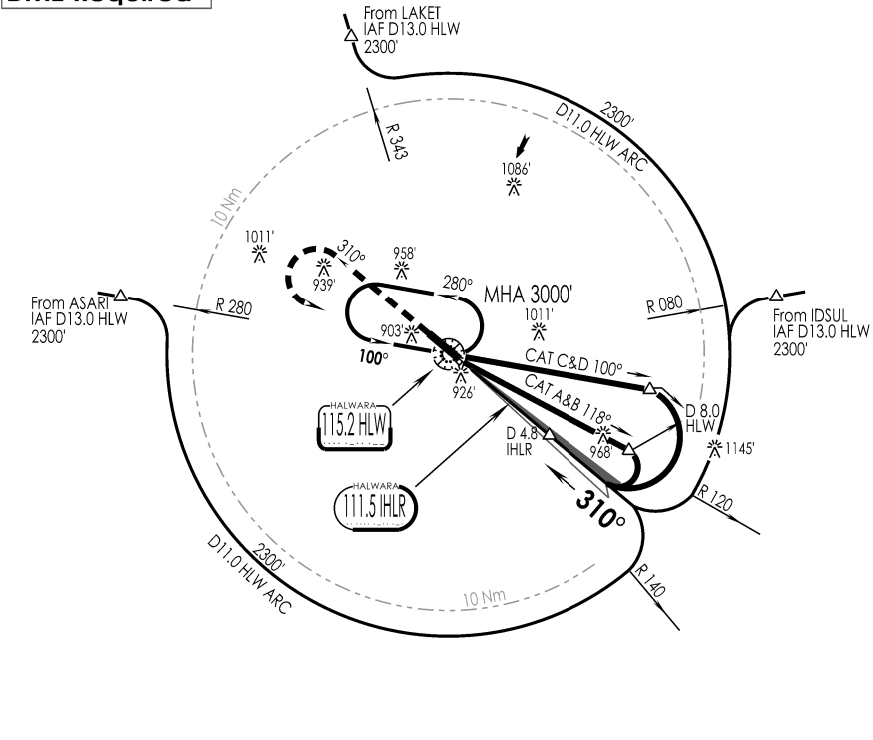
**DME Required**

1 Inch = 7.5 NM

7.5 NM

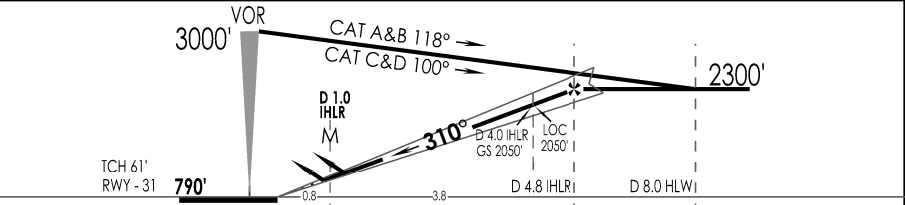
0

7.5 NM



SURVEY PERIOD : 2016-17

|        |               |      |      |      |      |
|--------|---------------|------|------|------|------|
| LOC    | IHLR DME      | 4.8  | 4.0  | 3.0  | 2.0  |
| GS OUT | ALTITUDE (ft) | 2300 | 2050 | 1730 | 1410 |



|                  |      |      |      |      |      |      |                    |         |         |
|------------------|------|------|------|------|------|------|--------------------|---------|---------|
| GND SPEED KTS    | 80   | 100  | 120  | 140  | 160  | 180  | CAT II<br>PAPI - R | ↑ 2300' | ↗ 3000' |
| GRADIENT %       | 5.24 | 5.24 | 5.24 | 5.24 | 5.24 | 5.24 |                    |         |         |
| MAP AT D1.0 IHLR |      |      |      |      |      |      |                    |         |         |

|                            |          |                      |          |                    |              |       |
|----------------------------|----------|----------------------|----------|--------------------|--------------|-------|
| STRAIGHT-IN LANDING RWY 31 |          |                      |          | CIRCLE - TO - LAND |              |       |
| ILS                        |          | LOC (GS OUT)<br>CDFA |          |                    |              |       |
| DA(H) 1002'(212')          |          | MDA(H) 1090'(300')   |          |                    |              |       |
| FULL                       |          | ALS OUT              |          | Max Kts            | MDA (H)      | VIS   |
| FULL                       |          | ALS OUT              |          | 100                | 1480' (690') | 3200m |
| FULL                       |          | ALS OUT              |          | 135                |              |       |
| FULL                       |          | ALS OUT              |          | 180                |              |       |
| FULL                       |          | ALS OUT              |          | 205                |              |       |
| A                          | RVR 550m | RVR 1200m            | RVR 650m | RVR 1400m          |              |       |
| B                          |          |                      |          |                    |              |       |
| C                          |          |                      |          |                    |              |       |
| D                          |          |                      |          |                    | 3600m        |       |

CHANGES : WAYPOINT

IPDC, DTE OF OPS (T & H)

1-3

VIHX  
HALWARA

IAF  
Eff 19 MAR 24

HALWARA, INDIA  
CAT II ILS RWY 31

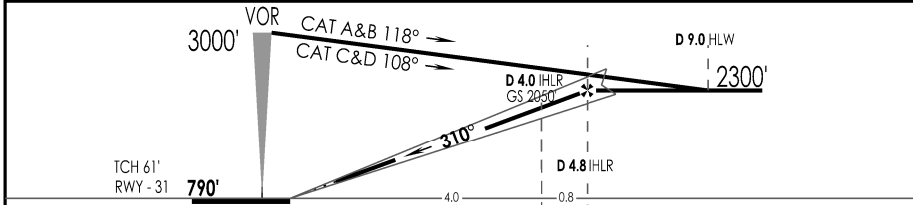
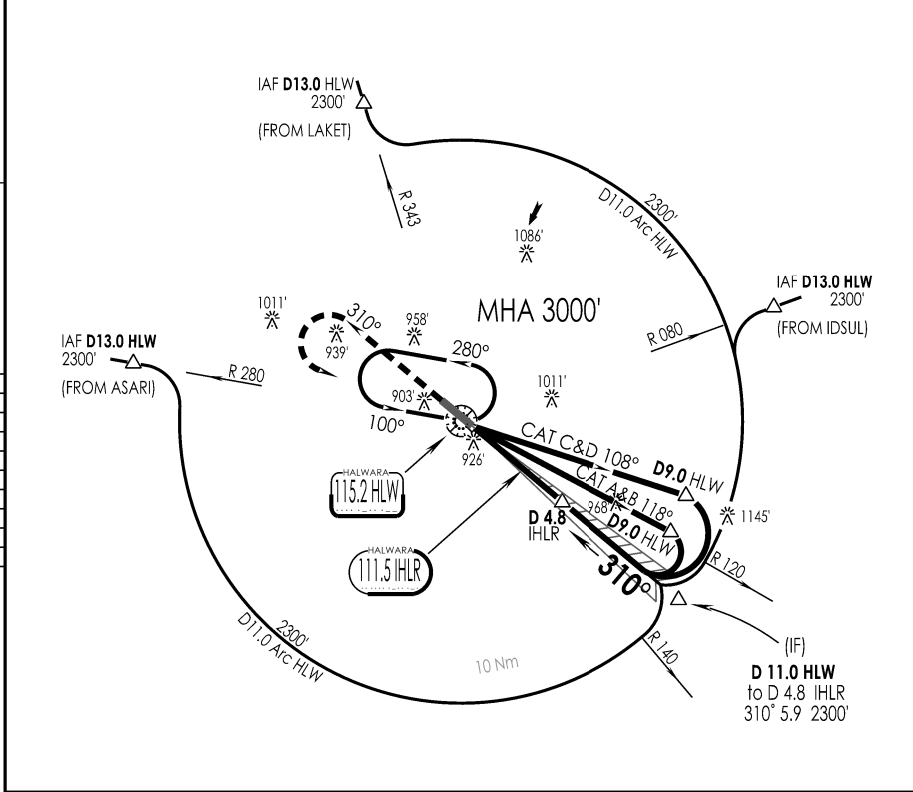
|   |                      |                           |                           |                        |                           |                |
|---|----------------------|---------------------------|---------------------------|------------------------|---------------------------|----------------|
| HALWARA Approach<br>130.1   |                      |                           | HALWARA Tower<br>130.1    |                        | ATIS<br>115.2             | 2300'          |
| VOR<br>HLW<br>115.2   | LOC<br>IHLR<br>111.5 | FINAL<br>Apch Crs<br>310° | GS<br>D 4.0 IHLR<br>2050' | DA (H)<br>As Per Table | Apt Elev 790'<br>RWY 790' |                |
| <b>MISSED APCH :</b> Climb STRAIGHT AHEAD to 2300', then climbing<br>turn LEFT to join VOR hold at 3000' or as directed by ATC. |                      |                           |                           |                        |                           |                |
| Alt Set: hPa  |                      | Rwy Elev: 28 hPa          | Trans level: By ATC       |                        | Trans alt: 4000'          | MSA<br>HLW VOR |

**DME Required**

- Max IAS during O/B restricted to 220 Kts.

1 Inch = 7.5 NM

SURVEY PERIOD : 2016-17



|                 |     |     |     |     |     |     |                    |         |             |
|-----------------|-----|-----|-----|-----|-----|-----|--------------------|---------|-------------|
| GND SPEED KTS   | 80  | 100 | 120 | 140 | 160 | 180 | CAT II<br>PAPI - R | ↑ 2300' | 3000'<br>LT |
| GRADIENT 5.24 % | 425 | 531 | 637 | 743 | 849 | 955 |                    |         |             |

|                            |                 |            |          |
|----------------------------|-----------------|------------|----------|
| STRAIGHT-IN LANDING RWY 31 |                 |            |          |
| DA (H)                     |                 | CAT II ILS |          |
| AB: 900' (110')            | CD: 926' (136') | AB: 110'   | CD: 136' |
| FULL                       |                 |            |          |

|   |          |
|---|----------|
| A | RVR 300m |
| B | RVR 300m |
| C | RVR 400m |
| D | RVR 400m |

CHANGES : WAYPOINT

IPDC, DTE OF OPS (T & H)

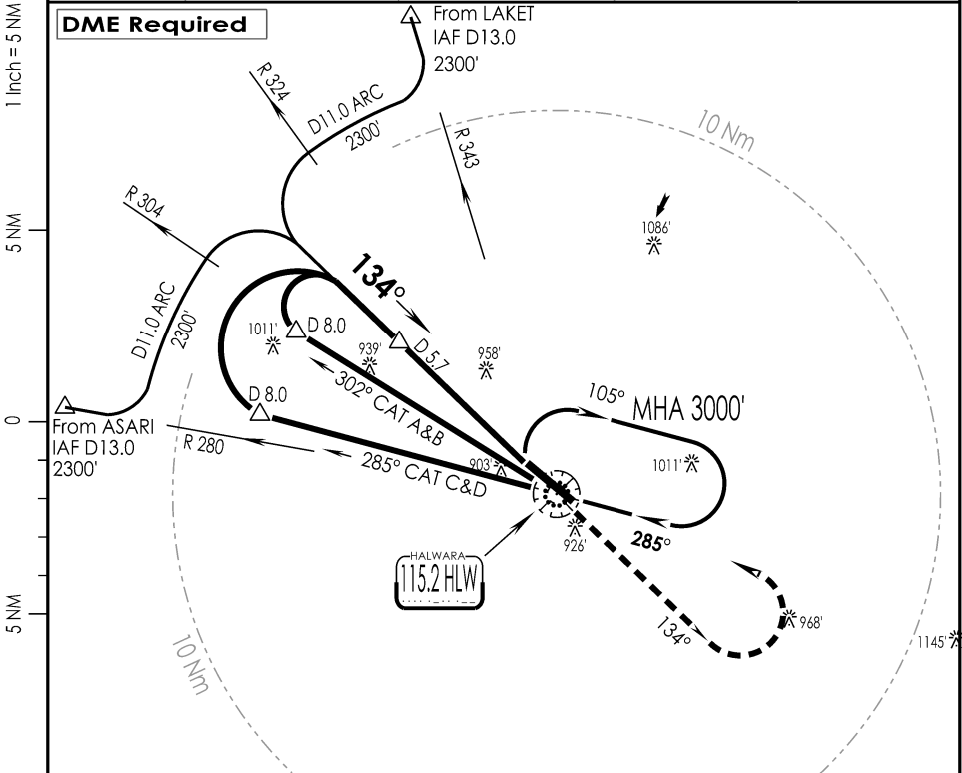
2-3

VIHX  
HALWARA

IAF  
Eff 27 DEC 23

HALWARA, INDIA  
VOR Z RWY 13

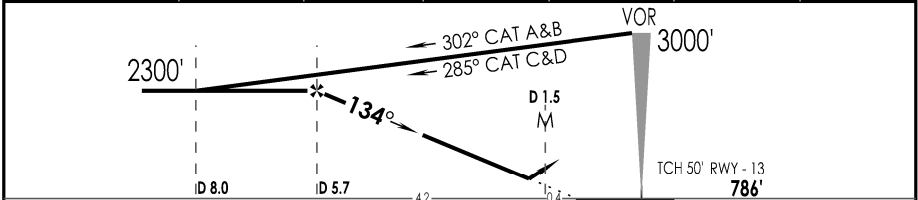
|  |                           |                           |                         |                           |       |
|--|---------------------------|---------------------------|-------------------------|---------------------------|-------|
| HALWARA Approach<br>130.1  |                           | HALWARA Tower<br>130.1    |                         | ATIS<br>115.2             | 2300' |
| VOR<br>HLW<br>115.2  | FINAL<br>Apch Crs<br>134° | FAF<br>D 5.7 HLW<br>2300' | MDA (H)<br>1150' (360') | Apt Elev 790'<br>RWY 786' |       |
| <b>MISSED APCH:</b> Climb STRAIGHT AHEAD to 2300', then climbing<br>turn LEFT to join VOR hold at 3000' or as directed by ATC. |                           |                           |                         |                           |       |
| Alt Set: hPa   | Rwy Elev: 28 hPa          | Trans level: By ATC       | Trans alt: 4000'        |                           |       |



1 Inch = 5 NM  
5 NM  
0  
5 NM

SURVEY PERIOD : 2016-17

|               |      |      |      |      |
|---------------|------|------|------|------|
| HLW DME       | 5.7  | 5.0  | 4.0  | 3.0  |
| ALTITUDE (ft) | 2300 | 2080 | 1760 | 1450 |



|                 |     |     |     |     |     |     |                  |                  |
|-----------------|-----|-----|-----|-----|-----|-----|------------------|------------------|
| GND SPEED KTS   | 80  | 100 | 120 | 140 | 160 | 180 | SALS<br>PAPI - R | ↑ 2300'<br>3000' |
| GRADIENT 5.2 %  | 425 | 531 | 637 | 743 | 849 | 955 |                  |                  |
| MAP AT D1.5 HLW |     |     |     |     |     |     |                  |                  |

|                                |  |           |  |                    |              |       |
|--------------------------------|--|-----------|--|--------------------|--------------|-------|
| STRAIGHT-IN LANDING RWY 13     |  |           |  | CIRCLE - TO - LAND |              |       |
| CDFA<br>MDA(H)<br>1150' (360') |  |           |  |                    |              |       |
| IALS                           |  | ALS OUT   |  | Max<br>Kts         | MDA (H)      | VIS   |
| RVR 1200m                      |  | RVR 1500m |  | 100                | 1480' (690') | 3200m |
|                                |  | RVR 1600m |  | 135                |              |       |
|                                |  |           |  | 180                |              |       |
|                                |  |           |  | 205                |              |       |

CHANGES : FREQ, ELEV, MDH

IPDC, DTE OF OPS (T & H)

(2-4)

VIHX  
HALWARA

IAF  
**Eff 27 DEC 23**

HALWARA, INDIA  
VOR Y RWY 13

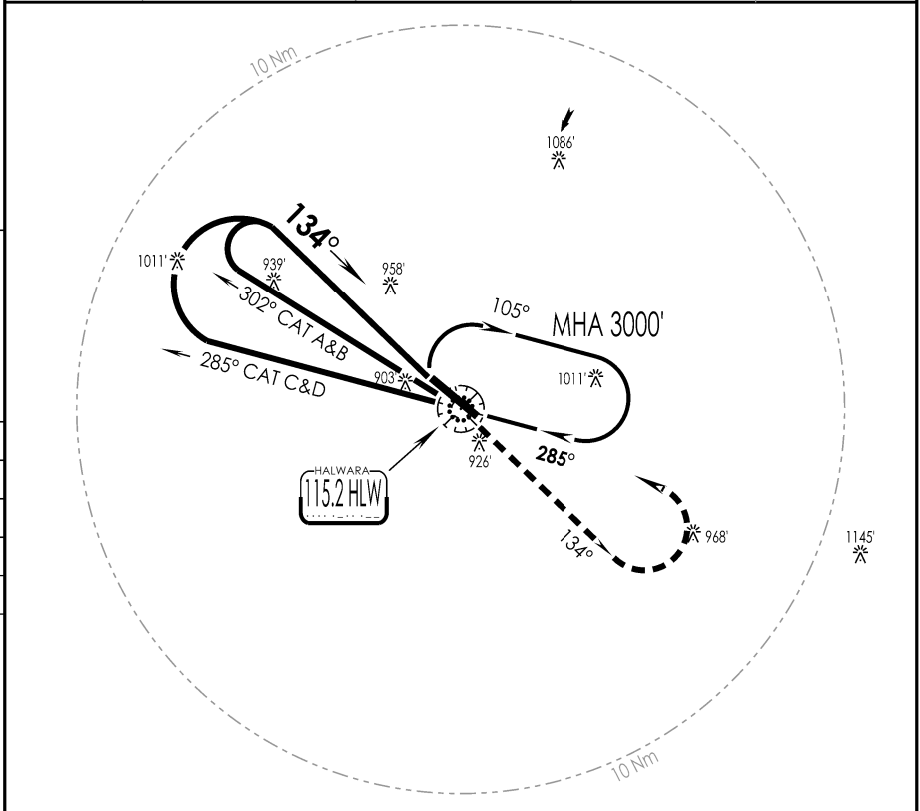
|  |                                  |                                |                  |                                  |                |
|--|----------------------------------|--------------------------------|------------------|----------------------------------|----------------|
| HALWARA Approach<br>130.1  |                                  | HALWARA Tower<br>130.1         |                  | ATIS<br>115.2                    | 2300'          |
| VOR<br>HLW<br><b>115.2</b>   | FINAL<br>Apch Crs<br><b>134°</b> | MDA (H)<br><b>1200'</b> (410') |                  | Apt Elev 790'<br>RWY <b>786'</b> |                |
| <b>MISSED APCH :</b> Climb STRAIGHT AHEAD to 2300', then climbing turn LEFT to join VOR hold at 3000' or as directed by ATC. |                                  |                                |                  |                                  |                |
| Alt Set: hPa   | Rwy Elev: 28 hPa                 | Trans level: By ATC            | Trans alt: 4000' |                                  | MSA<br>HLW VOR |

1 Inch = 5 NM

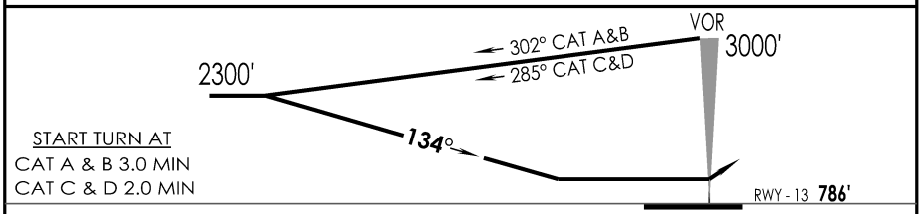
5 NM

0

5 NM



SURVEY PERIOD : 2016-17



|  |           |                  |                    |                                |
|--|-----------|------------------|--------------------|--------------------------------|
| MAP AT VOR                             |           | SALS<br>PAPI - R | ↑ 2300'            | 3000' ↓                        |
| STRAIGHT-IN LANDING RWY 13             |           |                  | CIRCLE - TO - LAND |                                |
| non-CDFA<br>MDA(H) <b>1200'</b> (410') |           |                  | Max<br>Kts         | MDA (H)<br><b>1480'</b> (690') |
| IALS                                   | ALS OUT   | VIS              |                    |                                |
| A                                      | RVR 1700m | RVR 2100m        | 100                | 3200m                          |
| B                                      |           |                  | 135                |                                |
| C                                      | RVR 1900m | RVR 2300m        | 180                | 3600m                          |
| D                                      |           |                  | 205                |                                |

CHANGES : FREQ, ELEV, MDH

IPDC, DTE OF OPS (T & H)

2-1

VIHX  
HALWARA

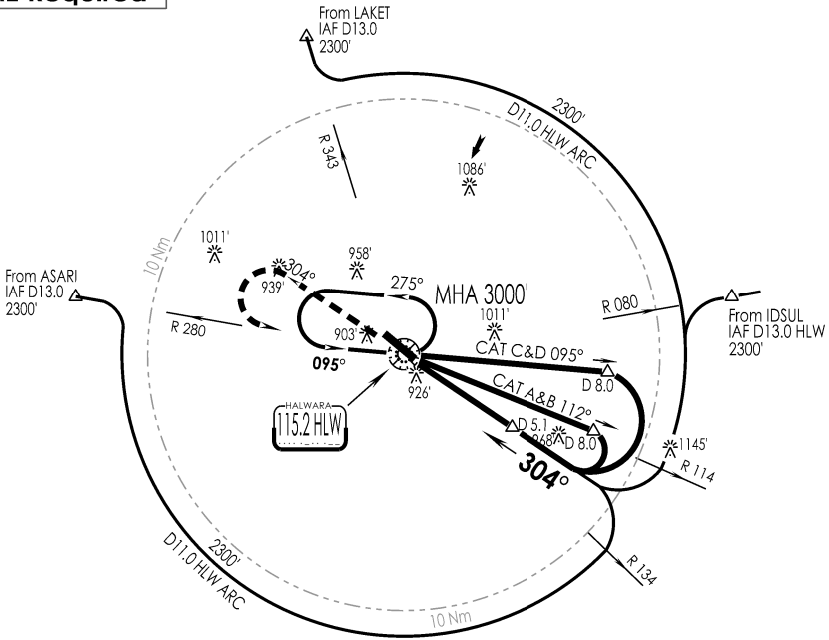
IAF  
Eff 19 MAR 24

HALWARA, INDIA  
VOR Z RWY 31

|   |                        |                           |                         |                           |       |
|---|------------------------|---------------------------|-------------------------|---------------------------|-------|
| HALWARA Approach<br>130.1   |                        | HALWARA Tower<br>130.1    |                         | ATIS<br>115.2             | 2300' |
| VOR HLW<br>115.2  | FINAL Apch Crs<br>304° | FAF<br>D 5.1 HLW<br>2300' | MDA (H)<br>As per table | Apt Elev 790'<br>RWY 790' |       |
| <b>MISSED APCH:</b> Climb STRAIGHT AHEAD to 2300', then climbing turn LEFT to join VOR hold at 3000' or as directed by ATC. |                        |                           |                         |                           |       |
| Alt Set: hPa  | Rwy Elev: 28 hPa       | Trans level: By ATC       | Trans alt: 4000'        |                           |       |

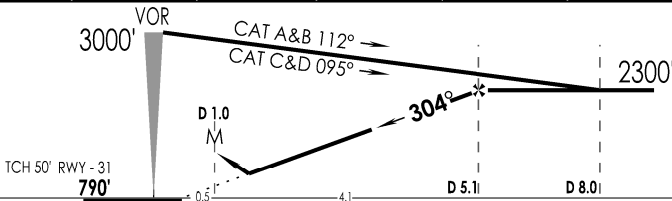
DME Required

1 inch = 7.5 NM  
7.5 NM  
0  
7.5 NM



SURVEY PERIOD : 2016-17

|               |      |      |      |      |      |
|---------------|------|------|------|------|------|
| HLW DME       | 2.0  | 3.0  | 4.0  | 5.0  | 5.1  |
| ALTITUDE (ft) | 1320 | 1640 | 1950 | 2270 | 2300 |



|                |     |     |     |     |     |     |                    |         |         |
|----------------|-----|-----|-----|-----|-----|-----|--------------------|---------|---------|
| GND SPEED KTS  | 80  | 100 | 120 | 140 | 160 | 180 | CAT II<br>PAPI - R | ↑ 2300' | ↶ 3000' |
| GRADIENT 5.2 % | 425 | 531 | 637 | 743 | 849 | 955 |                    |         |         |

|                            |           |                  |           |  |     |                    |         |       |
|----------------------------|-----------|------------------|-----------|--|-----|--------------------|---------|-------|
| STRAIGHT-IN LANDING RWY 31 |           |                  |           |  |     | CIRCLE - TO - LAND |         |       |
| <b>CDFA</b>                |           |                  |           |  |     |                    |         |       |
| MDA(H) AB: 1180' (390')    |           | CD: 1220' (430') |           |  |     | Max<br>Kts         | MDA (H) | VIS   |
| FULL                       |           | ALS OUT          |           |  |     |                    |         |       |
| A                          |           |                  |           |  | 100 | 1480' (690')       | 3200m   |       |
| B                          | RVR 1100m |                  | RVR 1500m |  | 135 |                    |         |       |
| C                          | RVR 1300m |                  | RVR 2000m |  | 180 |                    |         |       |
| D                          |           |                  |           |  | 205 |                    |         | 3600m |

CHANGES : WAYPOINT

IPDC, DTE OF OPS (T & H)

(2-2)

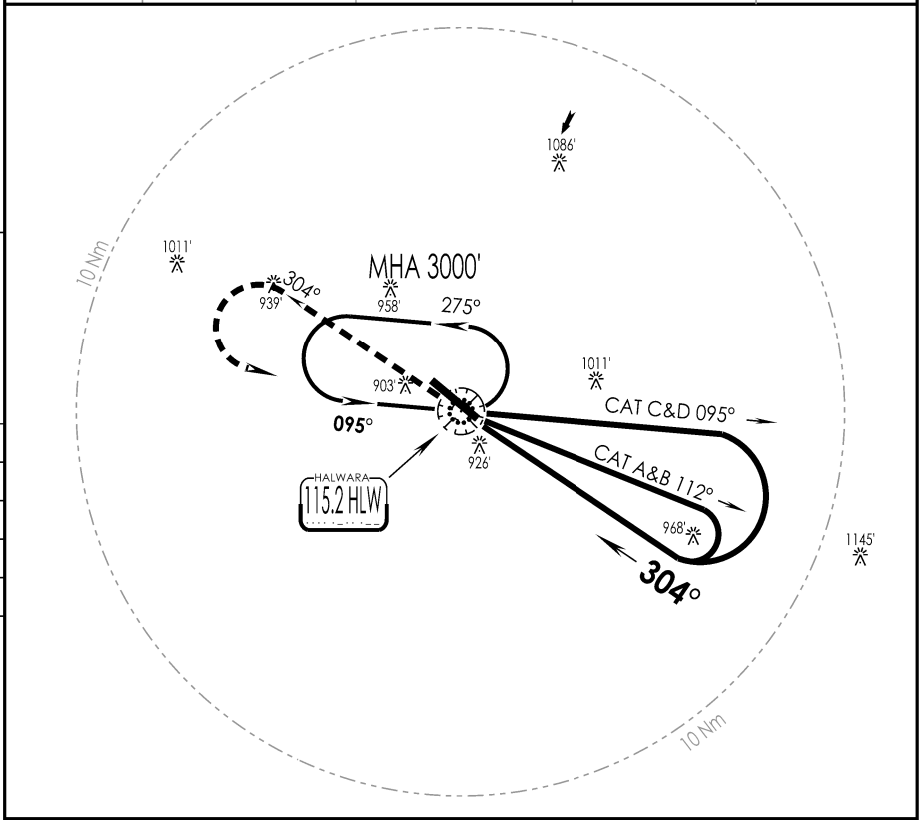
VIHX  
HALWARA

IAF  
**Eff 27 DEC 23**

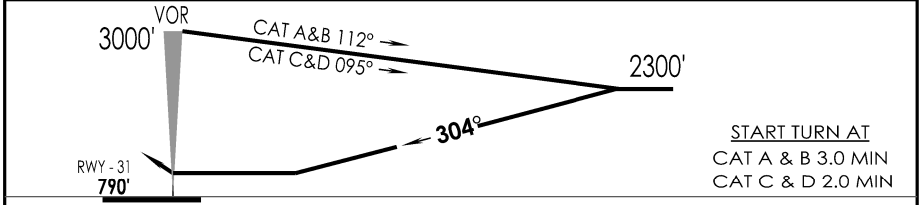
HALWARA, INDIA  
VOR Y RWY 31

|  |                                  |                                |   |                                  |
|--|----------------------------------|--------------------------------|---|----------------------------------|
| HALWARA Approach<br>130.1  | HALWARA Tower<br>130.1           | ATIS<br>115.2                  | <div style="border: 1px solid black; border-radius: 50%; width: 60px; height: 60px; margin: 0 auto; display: flex; align-items: center; justify-content: center;"> <span style="font-size: 24px;">2300'</span> </div> <p style="text-align: center; font-size: 10px;">MSA<br/>HLW VOR</p> |                                  |
| VOR<br>HLW<br><b>115.2</b>   | FINAL<br>Apch Crs<br><b>304°</b> | MDA (H)<br><b>1280' (490')</b> |   | Apt Elev 790'<br>RWY <b>790'</b> |
| <b>MISSED APCH :</b> Climb STRAIGHT AHEAD to 2300', then climbing turn LEFT to join VOR hold at 3000' or as directed by ATC. |                                  |                                |   |                                  |
| Alt Set: hPa   | Rwy Elev: 28 hPa                 | Trans level: By ATC            | Trans alt: 4000'  |                                  |

1 Inch = 5 NM



SURVEY PERIOD : 2016-17



|  |           |                    |                     |       |
|--|-----------|--------------------|---------------------|-------|
| MAP AT VOR                               |           | CAT II<br>PAPI - R | ↑ 2300'             | 3000' |
| STRAIGHT-IN LANDING RWY 31               |           |                    | CIRCLE - TO - LAND  |       |
| non - CDFA<br>MDA(H) <b>1280' (490')</b> |           |                    |                     |       |
| FULL                                     | ALS OUT   | Max<br>Kts         | MDA (H)             | VIS   |
| A<br>RVR 1700m                           | RVR 2500m | 100                | <b>1480' (690')</b> | 3200m |
| B<br>RVR 1900m                           | RVR 2700m | 135                |                     | 3600m |
| C<br>RVR 1900m                           | RVR 2700m | 180                |                     | 3600m |
| D  |           | 205                |                     |       |

CHANGES : FREQ, ELEV, MDH

IPDC, DTE OF OPS (T & H)