

| | | |
|---|---|-------------|
| TEL: +91-11-24632950 Extn: 2219/2233 AFS: VIDDYXAX FAX: +91-11-24615508 Email: gmais@aai.aero | INDIA AERONAUTICAL INFORMATION SERVICE AIRPORTS AUTHORITY OF INDIA RAJIV GANDHI BHAVAN SAFDARJUNG AIRPORT NEW DELHI – 110003 | 71/2026 |
| | | 02 APR 2026 |

File No. ATM-19013(19)/1/2026-ATM

Following supplement is issued for information, guidance and necessary action.

sd/-
विपिन कुमार
VIPIN KUMAR
अध्यक्ष/CHAIRMAN
भारतीय विमानपत्तन प्राधिकरण
AIRPORTS AUTHORITY OF INDIA

[EFFECTIVE DATE: 14 MAY 2026]

INSTRUMENT APPROACH CHART – VOR Y RWY 19R (CAT A/B/C)
NETAJI SUBHASH CHANDRA BOSE INTERNATIONAL AIRPORT
KOLKATA (VECC)

1. Following Instrument Approach Chart is issued for Netaji Subhash Chandra Bose International Airport, Kolkata:
 - i. Instrument Approach Chart – VOR Y RWY 19R (CAT A/B/C)

**INSTRUMENT
APPROACH
CHART**

AERODROME ELEV 20 FT

HEIGHT RELATED TO
THR RWY 19R ELEV 19 FT

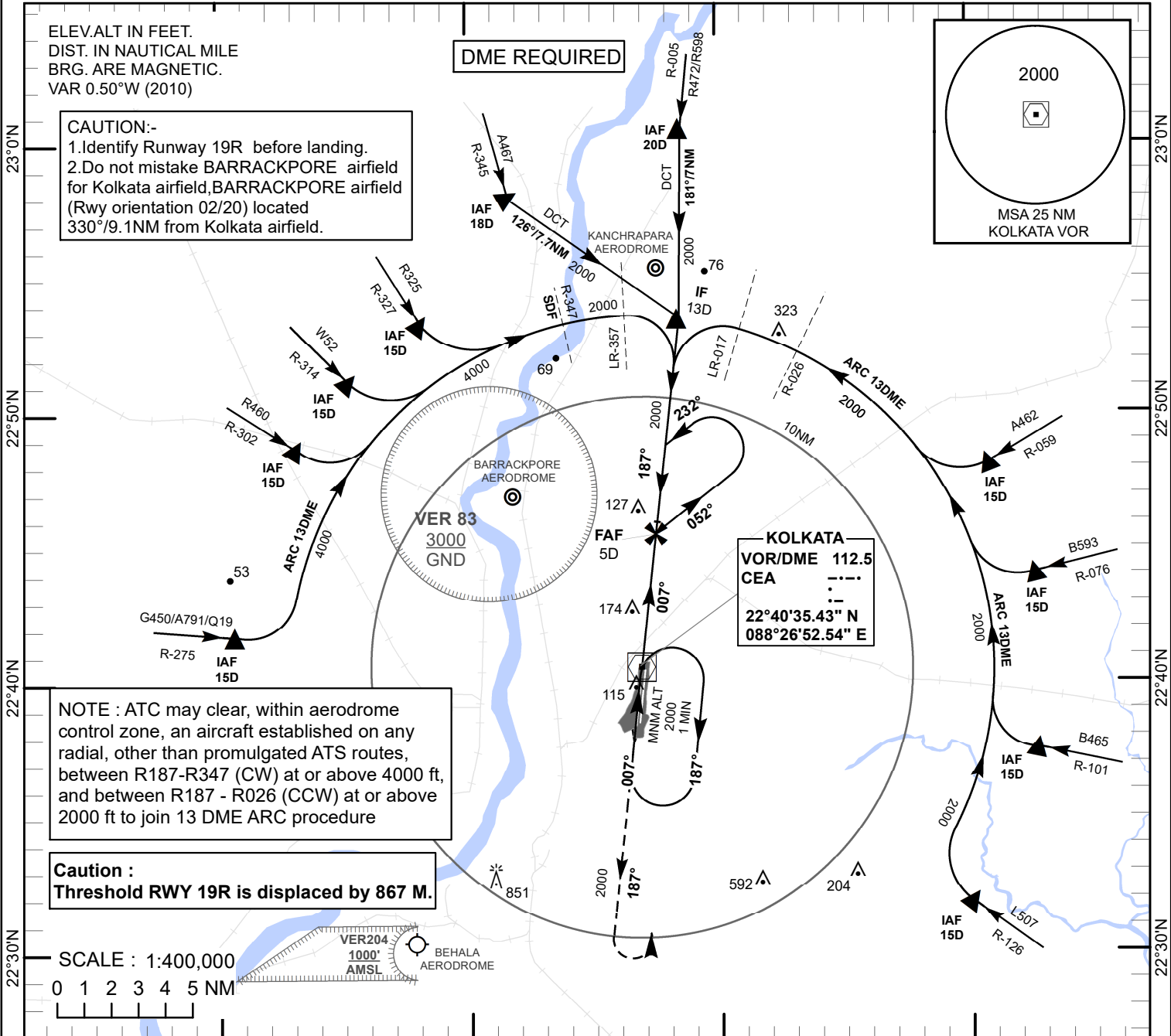
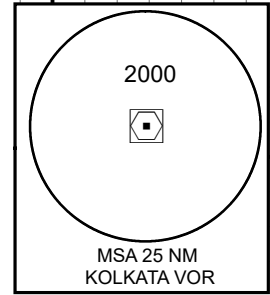
**APP 127.900/119.300/127.300
TWR 118.100/118.025**

KOLKATA(VECC)
INDIA
VOR Y RWY 19R
(CAT A/B/C)

ELEV. ALT IN FEET.
DIST. IN NAUTICAL MILE
BRG. ARE MAGNETIC.
VAR 0.50°W (2010)

CAUTION:-
1. Identify Runway 19R before landing.
2. Do not mistake BARRACKPORE airfield
for Kolkata airfield, BARRACKPORE airfield
(Rwy orientation 02/20) located
330°/9.1NM from Kolkata airfield.

DME REQUIRED



NOTE : ATC may clear, within aerodrome control zone, an aircraft established on any radial, other than promulgated ATS routes, between R187-R347 (CW) at or above 4000 ft, and between R187 - R026 (CCW) at or above 2000 ft to join 13 DME ARC procedure

Caution :
Threshold RWY 19R is displaced by 867 M.

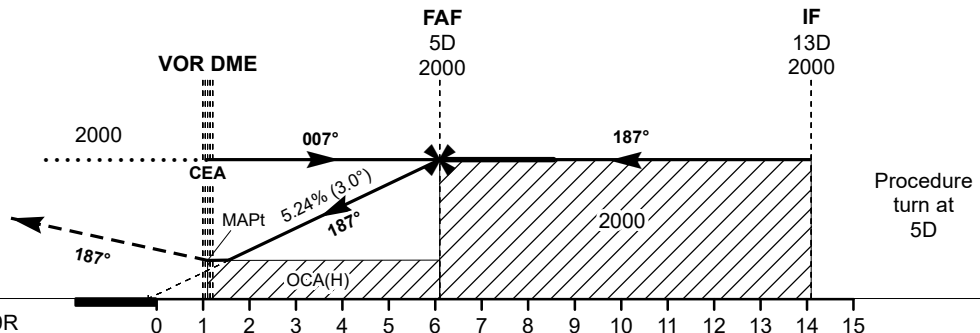
SCALE : 1:400,000
0 1 2 3 4 5 NM

Transition Altitude 4000

MISSED APPROACH

Climb Straight ahead 2000 ft then turn LEFT to join VOR (112.5 CEA) holding or as instructed by ATC.

THR Elev 19



NAUTICAL MILES FROM THR RWY 19R

| OCA(H) | | Distance / Altitude information | | | | | | |
|----------|--|--|--------------------|------|----------|------|------|-----|
| | | A/B/C | Distance (CEA-DME) | NM | 5D (FAF) | 4D | 3D | 2D |
| 440(420) | | | | 2000 | 1690 | 1370 | 1050 | 740 |
| | | Ground Speed & Rate of Descent information | | | | | | |
| | | Ground Speed | Kt | 80 | 100 | 120 | 140 | 160 |
| | | Rate of Descent (5.24%) | FT/min | 425 | 530 | 635 | 745 | 850 |

DRG.NO. AAI/15-IALC/311225/19/03/2026