

TEL: +91-11-24632950 Extn: 2219/2233 AFS: VIDDYXAX FAX: +91-11-24615508 Email: <a href="mailto:gmais@aai.aero">gmais@aai.aero</a>	<b>INDIA</b> <b>AERONAUTICAL INFORMATION SERVICE</b> <b>AIRPORTS AUTHORITY OF INDIA</b> <b>RAJIV GANDHI BHAVAN</b> <b>SAFDARJUNG AIRPORT</b> <b>NEW DELHI – 110003</b>	<b>73/2026</b>
		<b>02 APR 2026</b>

File No. ATM-19013(19)/1/2026-ATM

Following supplement is issued for information, guidance and necessary action.

**sd/-**  
**विपिन कुमार**  
**VIPIN KUMAR**  
**अध्यक्ष/CHAIRMAN**  
**भारतीय विमानपत्तन प्राधिकरण**  
**AIRPORTS AUTHORITY OF INDIA**

[EFFECTIVE DATE: 14 MAY 2026]

**INSTRUMENT APPROACH CHART – RNP Y RWY 11R**  
**INDIRA GANDHI INTERNATIONAL AIRPORT, DELHI (VIDP)**

1. Following Instrument Approach Chart is issued for Indira Gandhi International Airport, Delhi:
  - i. Instrument Approach Chart – RNP Y RWY 11R

**AMENDMENT/CANCELLATION**

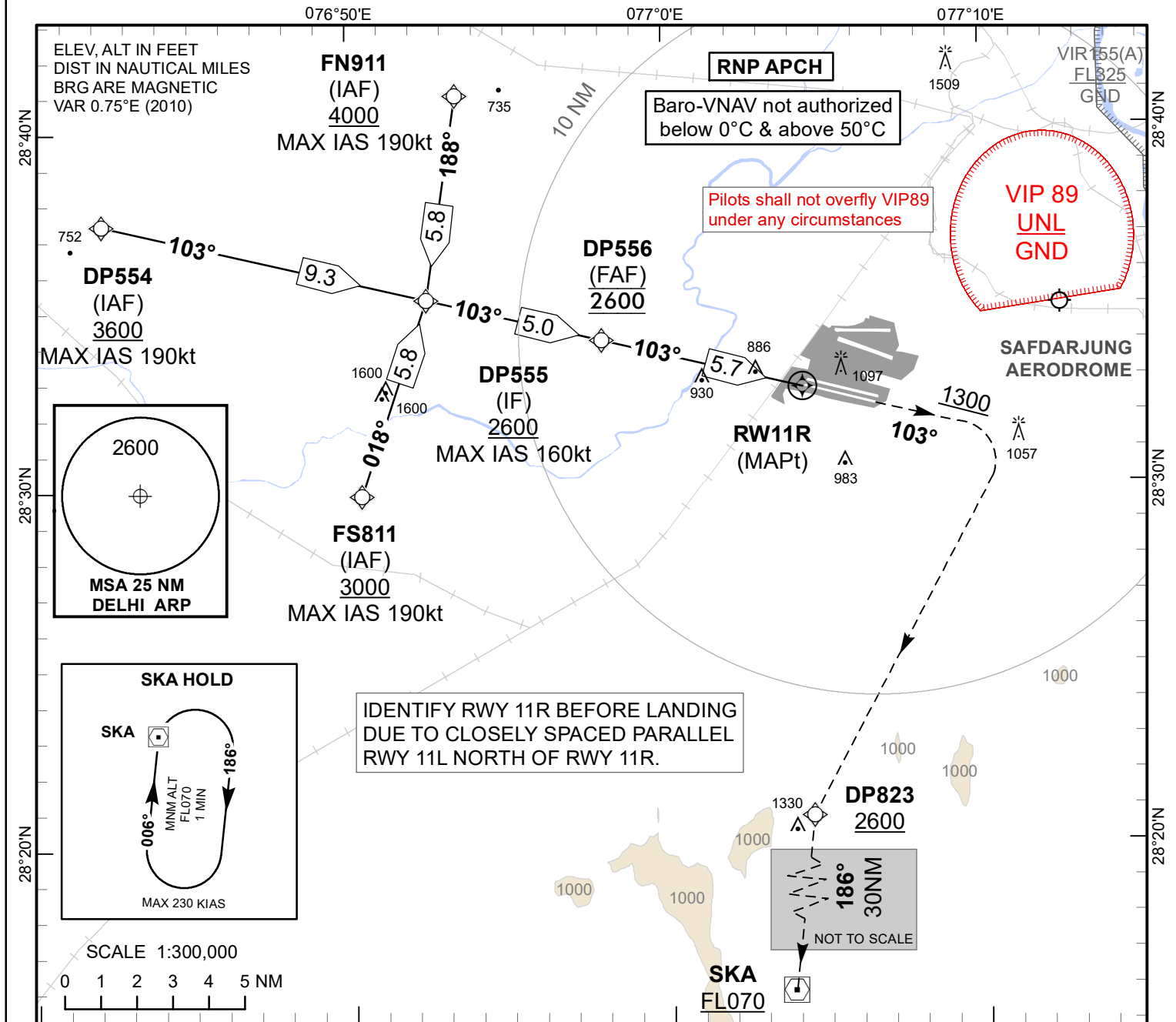
- i. **Insert** Instrument Approach Chart – RNP Y RWY 11R of this AIP Supplement in VIDP AD 2.24 of eAIP India and amend list of charts accordingly.

**INSTRUMENT  
APPROACH  
CHART**

**AERODROME ELEV 778ft**  
HEIGHTS RELATED TO  
THR RWY 11R - ELEV 725 ft

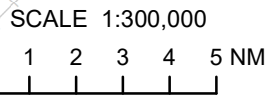
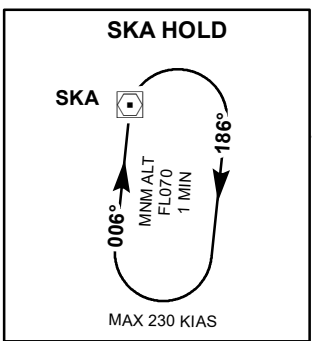
TWR 118.750/118.100  
APP 118.825/124.200  
125.675/126.350

**DELHI (VIDP)**  
INDIA  
**RNP Y RWY 11R**



IDENTIFY RWY 11R BEFORE LANDING  
DUE TO CLOSELY SPACED PARALLEL  
RWY 11L NORTH OF RWY 11R.

**186°**  
**30NM**  
NOT TO SCALE



**DP555**  
IF  
2600

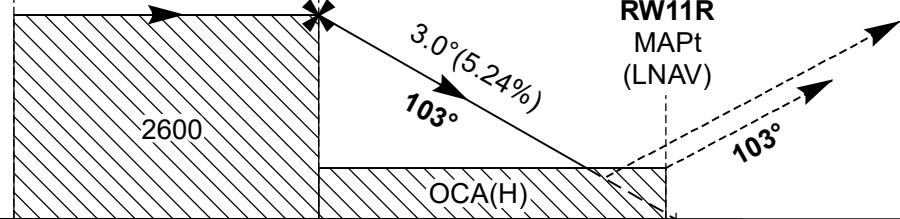
**DP556**  
FAF  
2600  
(LNAV)

**Transition Altitude 5000**

**MISSED APPROACH**  
Speed restricted to 210 KIAS Max  
Climb straight ahead, passing 1300ft  
turn right Proceed to DP823 climbing  
to 2600 ft. Then proceed to SKA  
climbing to FL070 to join hold at SKA  
or as instructed by ATC.

**TCH 50**

THR ELEV 725



OCA(H)		Distance / Altitude Information							
A/cft Category	A/B/C/D	Distance to RWY11R	NM	5.7(FAF)	5	4	3	2	
LNAV/VNAV	1100(375)	Altitude	Ft	2600	2370	2050	1740	1420	
LNAV	1190(465)	Ground Speed/ Rate of Descent Information							
		Ground Speed	Kt	80	100	120	140	160	180
		Rate of Descent (5.24%)	Ft/Min	425	530	635	745	850	955

**INSTRUMENT  
APPROACH  
CHART**

**AERODROME ELEV 778 ft  
HEIGHTS RELATED TO  
THR RWY 11R ELEV 725ft**

**DELHI (VIDP)  
INDIA  
RNP Y RWY 11R**

**TABULAR DESCRIPTION**

RNP Y RWY 11R-VIDP										
Serial Number	Path Descriptor	Waypoint Identifier	Fly Over	Course/heading °M(°T)	Distance (NM)	Turn Direction	Altitude (FT)	Speed Limit (Kt)	VPA/TCH °/ Ft	Navigation Specification
10	IF	FN911	-	-	-	-	+4000	-190	-	RNP APCH
20	TF	DP555	-	187.98° Mag / 188.73° True	5.75	-	+2600	-160	-	RNP APCH
10	IF	FS811	-	-	-	-	+3000	-190	-	RNP APCH
20	TF	DP555	-	018.17° Mag / 018.92° True	5.75	-	+2600	-160	-	RNP APCH
10	IF	DP554	-	-	-	-	+3600	-190	-	RNP APCH
20	TF	DP555	-	102.67° Mag / 103.42° True	9.27	-	+2600	-160	-	RNP APCH
10	IF	DP555	-	-	-	-	+2600	-160	-	RNP APCH
20	TF	DP556	-	102.79° Mag / 103.54° True	5.00	-	@2600	-	-	RNP APCH
30	TF	RW11R	Y	102.84° Mag / 103.59° True	5.73	-	@775	-	-3.00/50	RNP APCH
40	CA	-	-	102.89° Mag / 103.64° True	-	-	+1300	-210	-	RNP APCH
50	DF	DP823	-	-	-	R	+2600	-210	-	RNP APCH
60	TF	SKA	-	186.04° Mag / 186.79° True	30.00	-	+FL070	-210	-	RNAV 1
70	HM	SKA	Y	006.00° Mag / 006.75° True	1 Min	R	+FL070	-230	-	RNAV 1

## WAYPOINT LIST

<b>RNP Y RWY 11R-VIDP</b>	
<b>WAYPOINT IDENTIFIER</b>	<b>COORDINATES</b>
DP554	N 28:37:26.33 E 076:42:13.62
DP555	N 28:35:16.55 E 076:52:28.11
DP556	N 28:34:06.00 E 076:57:59.35
DP823	N 28:20:46.29 E 077:04:29.78
FS811	N 28:29:49.33 E 076:50:21.05
FN911	N 28:40:58.26 E 076:53:27.59
RW11R	N 28:32:44.86 E 077:04:18.85
SKA	N 27:50:56.21 E 077:00:29.97